



ASHCROFT PLACE

STAINES-UPON-THAMES

LANGLEY ROAD | STAINES-UPON-THAMES | SURREY | TW18 2EH



Computer generated image of Apartments



This site plan is a guide for illustrative purposes only. Landscaping shown is indicative only.

Apartment 21

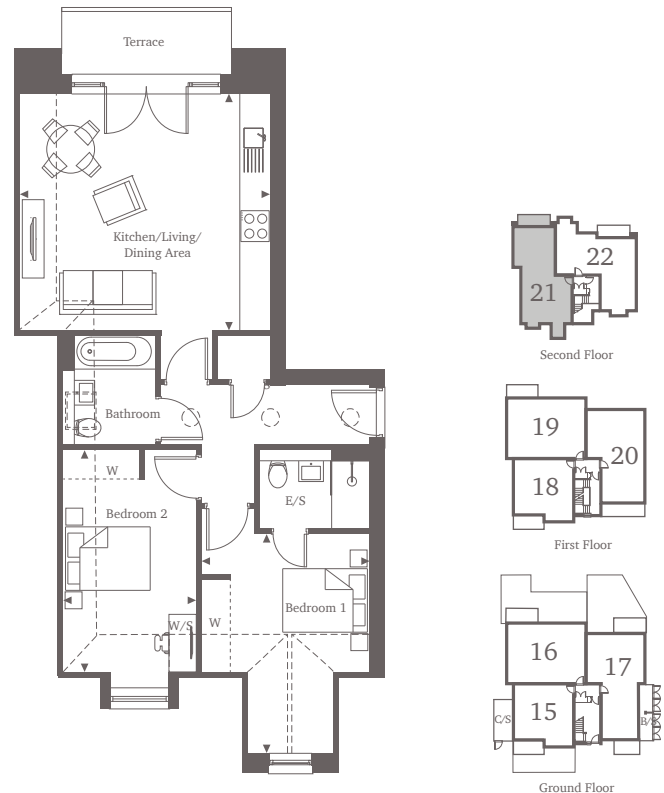
Second Floor

Elevate your lifestyle in this spacious 2-bedroom apartment, occupying a prime position on the second floor. The generous open plan kitchen and living area impresses with a long countertop spanning the length of the room. Double doors open to a north-facing terrace, bathing the space in natural light. Both bedrooms are doubles and include built-in wardrobes, with the master bedroom also featuring an en-suite bathroom. The main bathroom, generously sized, is conveniently located near the entrance, accompanied by plenty of storage space.

Two Bedroom Home

73.11 sq m | 787 sq ft

Kitchen/Living/Dining Area	
5.18m x 4.90m	16'9" x 16'0"
Bedroom 1	
4.54m x 3.50m*	14'9" x 11'6"*
Bedroom 2	
4.62m x 2.75m*	15'2" x 9'0"*



For more information, please call 01784 913 033

shanlyhomes.com



◀ Point from which maximum dimensions are measured. C/S denotes cycle store. B/S denotes bin store. * Denotes (max) dimension. Dimensions are intended for guidance only and may vary by plus or minus 7.6cm/3". The plots indicate general layout only which may vary from other plots. Kitchen and bathroom layouts indicative only. S denotes storage. W denotes wardrobe. E/S denotes en-suite. W/S denotes work station. --- Skirting line denotes restricted head height. Dimensions taken from 1.5m. ☉ denotes sun tube skylight. Please contact a sales consultant for more information.