



# LIGHTFIELD

HIGH ST. BARNET, LONDON



## PENTHOUSE 58

TWO BEDROOM

A STUNNING TWO BEDROOM PENTHOUSE APARTMENT STYLISHLY DESIGNED TO MAXIMISE SPACE FOR EVERYDAY LIFESTYLES. YOU WILL FIND AN OPEN PLAN KITCHEN/LIVING/DINING AREA WITH A LARGE TERRACE, AN AREA FOR HOMEWORKING AND SPACIOUS BEDROOMS ALL JUST 30 MINUTES AWAY FROM THE CITY.

**Total Internal Area**  
79.7 sq m | 857 sq ft



# LIGHTFIELD

HIGH ST. BARNET, LONDON

## PENTHOUSE 58

### TWO BEDROOM

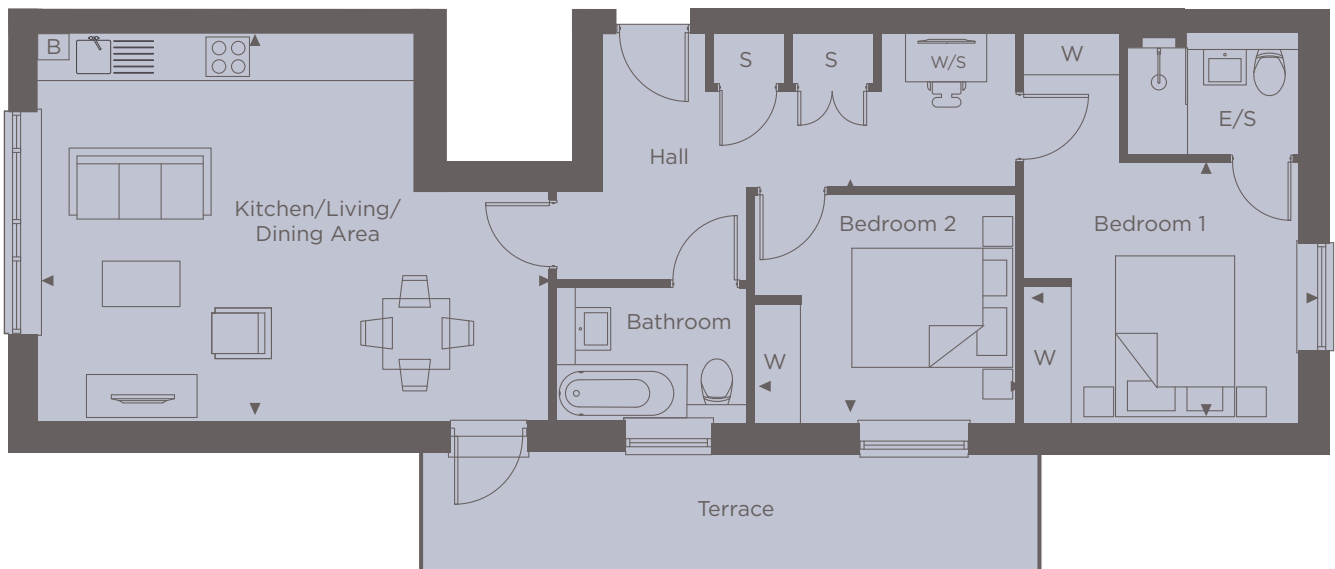
**Kitchen/Living/Dining Area**  
6.80m x 5.10m    22'3" x 16'7"

**Bedroom 1**  
3.42m x 3.70m    11'3" x 21' 1"

**Bedroom 2**  
3.44m x 3.00m    11'2" x 9'10"

**Terrace**  
8.30m x 1.65m    27'2" x 5'4"

**Internal Area**  
79.7 sq m    857 sq ft



◀ Point from which maximum dimensions are measured. Dimensions are intended for guidance only and may vary by plus or minus 7.6cm/3". The plots indicate general layout only which may vary from other plots. Kitchen and bathroom layouts indicative only. W denotes wardrobe. S denotes storage. E/S denotes en-suite. W/S denotes workstation. L denotes lift. Please contact sales consultant for more information.

For more information please call 01494 685825 or [shanlyhomes.com](http://shanlyhomes.com)

**SHANLY**  
HOMES