

# The Thundersley

Four bedroom detached home

Plots 90\* & 92

Gross Internal Area: 242.8 sq m (2,613 sq ft)



**Key:**

C - Cupboard W - Built-in Wardrobe ▲ - Front Entrance ◀ ▶ - Depicts where measurements have been taken from

\* Denotes handed plot. Individual plots vary in size, please ask the Sales Consultant for details.

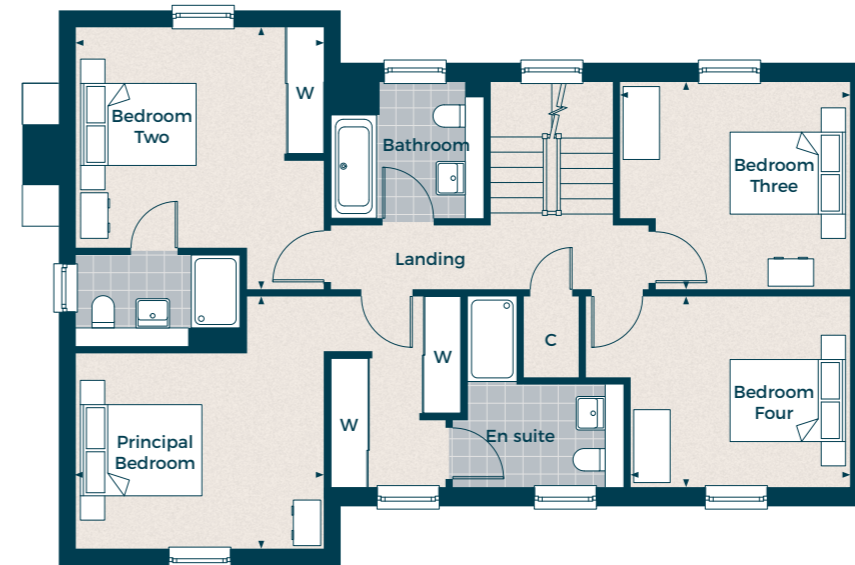
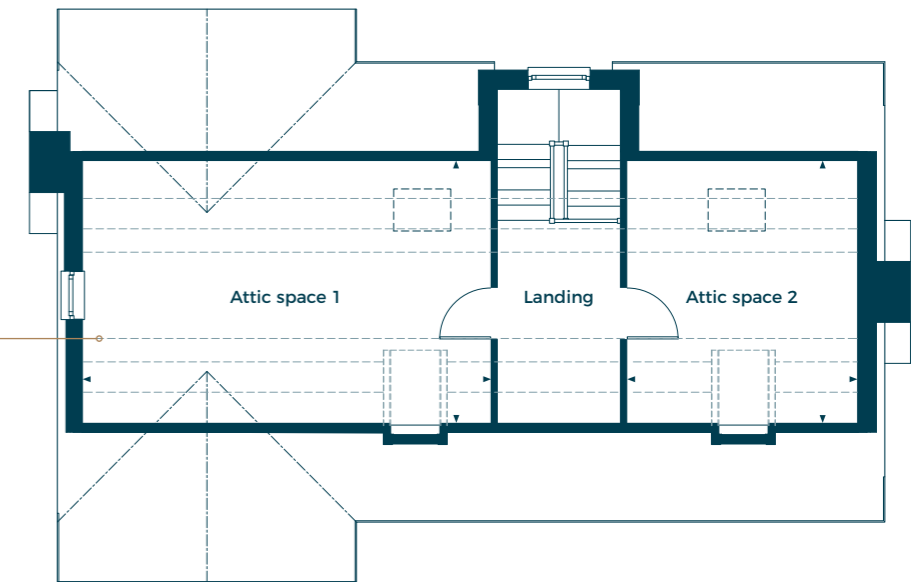
Computer generated images are indicative only. Floor plans shown are indicative only. To increase legibility these plans have been sized to fit the page and as a result may be of a different scale to others within this document. Location of windows, doors, wardrobes, kitchen units, appliance spaces and bathroom fittings may differ. Garden and Terrace is indicative only. All measurements may vary within a tolerance of 5%. The dimensions are not intended to be used for carpet sizes, appliance sizes or items of furniture.

**Second Floor**

Attic space 1  
6.71m x 4.31m 22' 0" x 14' 2"

Attic space 2  
4.31m x 3.79m 14' 2" x 12' 5"

Lines denotes change in head height



**First Floor**

Principal Bedroom  
4.15m x 4.08m 13' 7" x 13' 5"

Bedroom 2  
4.31m x 4.08m 14' 2" x 13' 5"

Bedroom 3  
3.79m x 3.41m 12' 5" x 11' 2"

Bedroom 4  
3.61m x 3.14m 11' 10" x 10' 4"



**Ground Floor**

Living Room  
6.67m x 3.79m 21' 11" x 12' 5"

Kitchen / Dining / Family  
8.58m x 6.32m 28' 2" x 20' 9"