

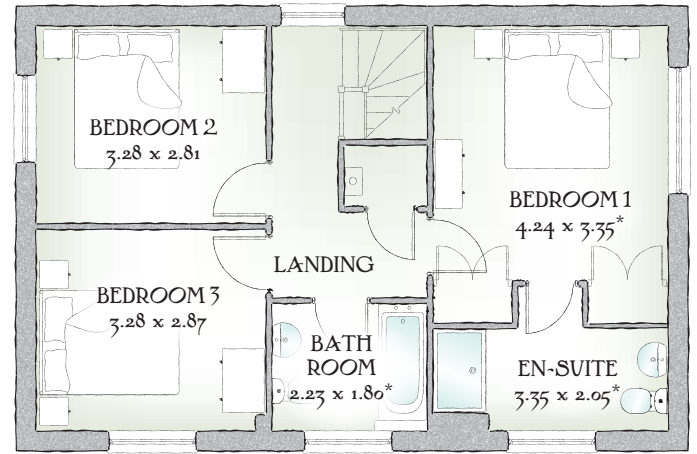
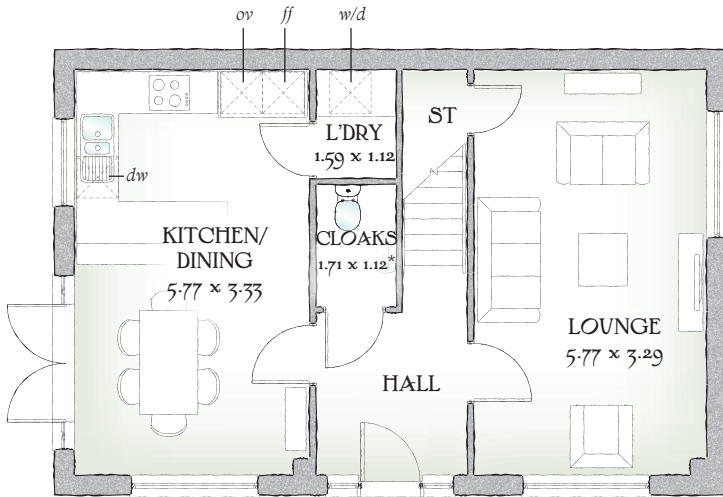


Amberley

THREE BEDROOM HOME



 REDROW



THREE BEDROOM HOME

A beautiful home, the Amberley creates the perfect balance between a peaceful environment and a practical living space. An extensive kitchen/dining area, separate lounge and three double bedrooms, make this home the perfect place to relax after a long day.

GROUND FLOOR

Lounge	18'11" x 10'10"	5.77 x 3.29 m
Kitchen/ Dining	18'11" x 10'11"	5.77 x 3.33 m
Cloaks	5'7" x 3'8"	1.71 x 1.12 m
Laundry	5'3" x 3'8"	1.59 x 1.12 m

FIRST FLOOR

Bedroom 1	13'11" x 11'0"	4.24 x 3.35 m*
En-suite	11'0" x 6'9"	3.35 x 2.05 m*
Bedroom 2	10'9" x 9'3"	3.28 x 2.81 m
Bedroom 3	10'9" x 9'5"	3.28 x 2.87 m
Bathroom	7'4" x 5'11"	2.23 x 1.80 m*

CONSUMER CODE FOR HOME BUILDERS

www.consumercode.co.uk

Customers should note this illustration is an example of the Amberley house type. All dimensions indicated are approximate and furniture layout is for illustrative purposes only. Homes may be 'handed' (mirror image) versions of the illustrations, and may be detached, semi-detached or terraced. Materials used may differ from plot to plot including render and roof tile colours. Detailed plans and specifications are available for inspection for each plot at our Sales Centre during working hours and customers must check their individual specifications prior to making a reservation.

KEY  Hob *ov* Oven *ff* Fridge/freezer *w/d* Washer/dryer space *dw* Dishwasher space *ST* Cupboard

*Max dimensions taken into wardrobe recess. All wardrobes are subject to site specification. Please see Sales Consultant for further details.

Traditional homes, built the way you remember

 **REDROW**
A BETTER WAY TO LIVE