

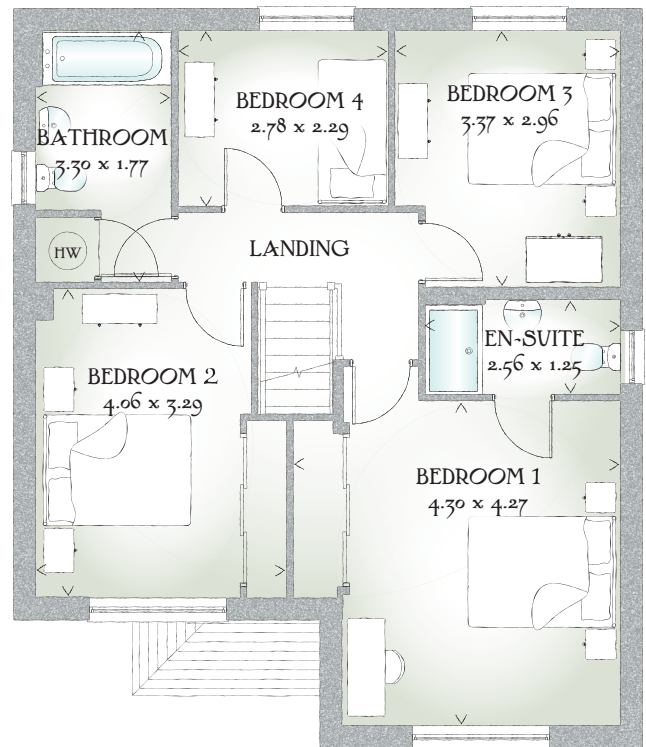
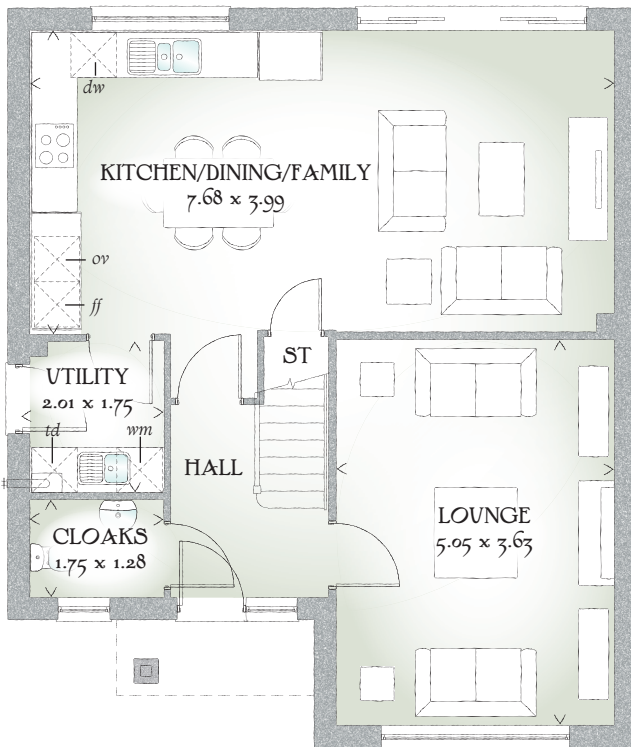


Cambridge

FOUR BEDROOM HOME



 REDROW



FOUR BEDROOM HOME

From first glance it is clear that the Cambridge has been designed by an architect who understands the dynamics of family life. This substantial property maintains the fine balance between time together and personal space by providing an ideal family area, a comfortable lounge and four bedrooms.

GROUND FLOOR

Lounge	16'7" x 11'11"	5.05 x 3.63 m
Kitchen/ Dining/ Family	25'2" x 13'1"	7.68 x 3.99 m
Utility	6'7" x 5'9"	2.01 x 1.75 m
Cloaks	5'9" x 4'2"	1.75 x 1.28 m

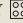
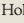
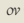

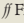
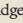

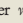
FIRST FLOOR

Bedroom 1	14'1" x 14'0"	4.30 x 4.27 m
En-suite	8'5" x 4'1"	2.56 x 1.25 m
Bedroom 2	13'4" x 10'10"	4.06 x 3.29 m
Bedroom 3	11'1" x 9'9"	3.37 x 2.96 m
Bedroom 4	9'1" x 7'6"	2.78 x 2.29 m
Bathroom	10'10" x 5'10"	3.30 x 1.77 m

CONSUMER CODE FOR HOME BUILDERS

www.consumercode.co.uk

Customers should note this illustration is an example of The Cambridge house type. All dimensions indicated are approximate and the furniture layout is for illustrative purposes only. Homes may be 'handed' (mirror image) versions of the illustrations, and may be detached, semi-detached or terraced. Materials used may differ from plot to plot including render and roof tile colours. Detailed plans and specifications are available for inspection for each plot at our Sales Centre during working hours and customers must check their individual specifications prior to making a reservation.

KEY  Hob  Oven  Fridge/freezer  Washing machine space  Dishwasher space  Tumble dryer space  Hot water cylinder  Cupboard

< Denotes where dimensions are taken from. All wardrobes are subject to site specification. Please see Sales Consultant for further details.

Traditional homes, built the way you remember

 **REDROW**
A BETTER WAY TO LIVE