

# Oaklands Park

Oaklands Park Littleworth Road | Esher | Surrey | KT10 9PN

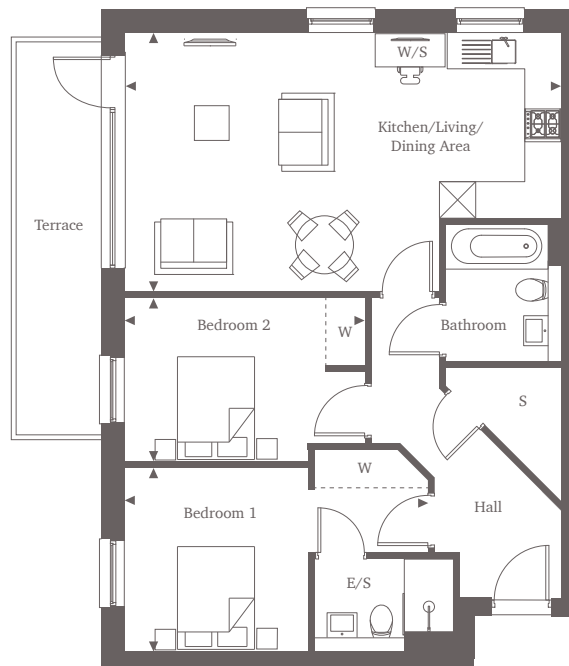


This site plan is a guide for illustrative purposes only. Landscaping shown is indicative only.

## Apartments 21, 22, 28 & 29

### First & Second Floors

Discover the epitome of modern living in these two-bedroom apartments, each boasting a spacious open plan kitchen and living area. The generous room layout accommodates a workstation, catering to the demands of a contemporary lifestyle. A doorway opens onto an east facing terrace that spans nearly the entire length of the property, inviting you to enjoy the views. Both double bedrooms feature built-in wardrobes, with the first bedroom enjoying the added luxury of an en-suite. Generous storage space and a stylish bathroom are conveniently positioned near the entrance.



**Two Bedroom Home**  
72.80 sq m | 784 sq ft

Kitchen/Living/Dining Area	7.26m x 4.28m*	23'10" x 14'0"*
Bedroom 1	5.03m x 3.05m*	16'6" x 10'0"*
Bedroom 2	3.98m x 2.72m*	13'1" x 8'11"*

For more information, please call 01372 679 383  
shanlyhomes.com



◀ Point from which maximum dimensions are measured. \* Denotes (max) dimension. Dimensions are intended for guidance only and may vary by plus or minus 7.6cm/3". The plots indicate general layout only which may vary from other plots. Kitchen and bathroom layouts indicative only. S denotes storage. W denotes wardrobe. E/S denotes en-suite. W/S denotes work station. B/S denotes bin store. C/S denotes cycle store. Please contact a sales consultant for more information.