



HIGH STREET | EDGWARE



Apartment 22 Two bedroom home

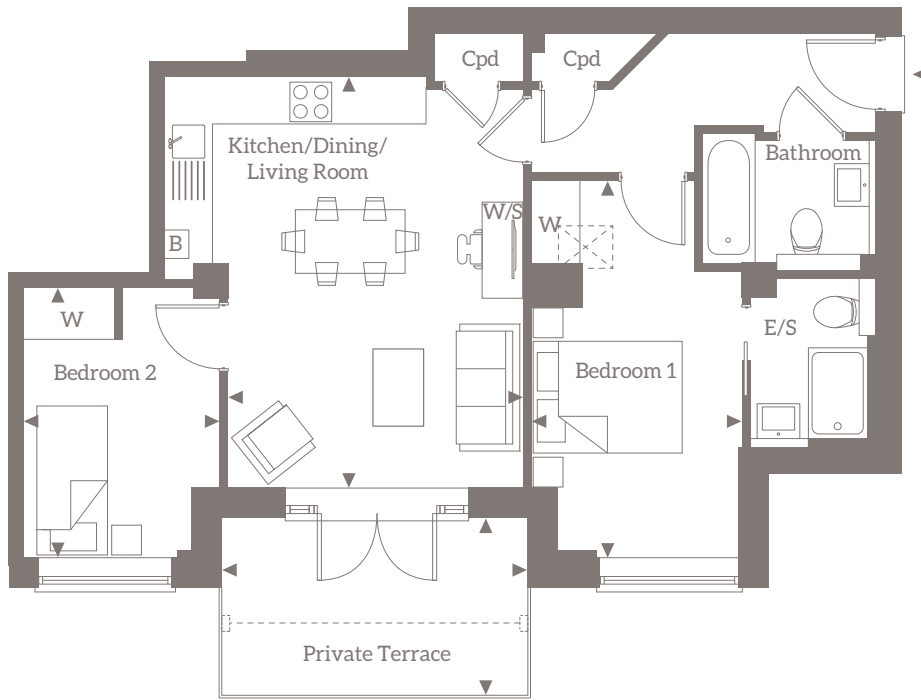
Apartment 22 is a beautiful two bedroom home situated on the ground floor. This apartment features a stylish open plan living, dining, kitchen area with a private terrace accessed by French doors, the contemporary style kitchen is fitted with high-spec units and quality branded appliances. Bedroom one enjoys a luxury en-suite and built-in wardrobe, with the second bedroom also boasting a built-in wardrobe. This apartment also features a spacious bathroom. Outside your new home you will find beautiful open spaces. This home has allocated parking.

Total internal area:

665 sq ft | 61.7 sq m



HIGH STREET | EDGWARE



Ground Floor

Kitchen/Living/Dining Room	5.44m x 3.91m	18'2" x 12'10"	Terrace	3.90m x 2.40m	12'9" x 7'10"
Bedroom 1	4.96m x 2.79m	16'3" x 9'2"			
Bedroom 2	3.51m x 2.60m	11'6" x 8'6"			

◀ Point from which maximum dimensions are measured. Dimensions are intended for guidance only and may vary by plus or minus 7.6cm/3". The plots indicate general layout only which may vary from other plots. Kitchen and bathroom layouts indicative only. W denotes wardrobe. S denotes linen cupboard. W/S denotes work station. The sq ft / sq m may change from the final product, sizes quoted are correct at time of print. Please contact sales consultant for more information. Photography of previous Shanly Homes indicative only.

HILLGROVE HOUSE
HIGH STREET | EDGWARE | LONDON | HA8 7EX

For more information please call 01494 685 825 shanlyhomes.com

