



THE OAKS



EXPERIENCE THE DAVID WILSON DIFFERENCE



At David Wilson Homes, we have been building quality homes across the UK for over 40 years. Our reputation is founded upon our commitment to providing traditional homes, in desirable locations, that are built to a superb specification.

I am proud to say that our customers have rated us as a 5 Star Housebuilder for customer satisfaction year on year and we are delighted to have been given the opportunity to bring industry-leading standards to another superb location.

The Oaks at Wedgwood Park is our latest collection of exquisite family homes, offering luxury, bespoke five bedroom homes in a range of designs.

We would encourage you to come and experience the David Wilson difference, and look forward to welcoming you to The Oaks.



DAVID WILSON HOMES

WHERE QUALITY LIVES











WE COULD BE YOUR GUARANTEED BUYER WITH PART EXCHANGE



Let us buy your current property so that you can make the move to one of our carefully designed, luxury homes at The Oaks. Our Part Exchange scheme can help take the hassle out of moving home.

A quicker and easier move

Now is a great time to buy the new home you've been longing for, and with Part Exchange you will be picking up the keys in no time – no estate agent fees, no chain, just a quicker and easier move. Let us buy your existing home so you can make the move to The Oaks. Competitive mortgage rates and reduced Stamp Duty (in England and Wales) could also make it more affordable to buy, so what are you waiting for? Reserve your home at The Oaks today.

Our Part Exchange scheme makes moving home simpler because:

- You have no estate agent fees to pay
- You have a guaranteed buyer
- You get fair value for your current home
- You get a less stressful move into a brand new home

How does Part Exchange work?

To make sure that you are eligible for the scheme, speak to one of our experienced Sales Advisers. They can tell you if your current home qualifies for Part Exchange.

If you are eligible for the scheme, then all you have to do is reserve your new home to secure the purchase price. We will arrange two independent valuations, and any offer we make on your existing home will be based on a sale within eight to ten weeks. If you accept our formal offer, we'll move forward to exchanging contracts.

We will help you through the whole process, so you can relax and look forward to moving into your brand new home.

A new home for real peace of mind

Your peace of mind really matters to us, and that is why we give you a 10-year structural warranty, plus a 2-year fixtures and fittings warranty on virtually all our homes. We want you to be as confident about the quality of our homes as we are.



The Oaks

- Plot 187: Equestria House
Plot 206: Jasper House
- Plot 181: Muse House
- Plot 199: Josiah House
Plot 202: Whistler House
- Plot 190: Harlequin House
- Plot 193: Pashmina House
- Plot 200: Bentley House
- Plot 182: Edme House
Plot 189: Florentine House
Plot 197: Etruria House
Plot 201: Royal House
Plot 203: Skeaping House
Plot 205: Flaxman House
- Plot 185: Cornucopia House
Plot 191: India house
Plot 208: Guyatt House
- Plot 184: Butterfly House
Plot 188: Ethereal House
Plot 204: Ravilious House
- Plot 183: Amherst House
Plot 186: Cuckoo House
Plot 196: Taylor House
Plot 207: Machin House
- Plot 192: Intaglio House
Plot 194: Ashlar House
- Plot 195: Lynam House
Plot 198: Murray House
Plot 209: Conran House

AMHERST HOUSE

A five bedroom detached home



The Oaks at Wedgwood Park, Wedgwood Drive, Nr Barlaston ST12 9ER

Amherst, Wedgwood's fine bone china tableware, with black, grey accents and blue floral motifs and platinum band, was introduced in 1984.



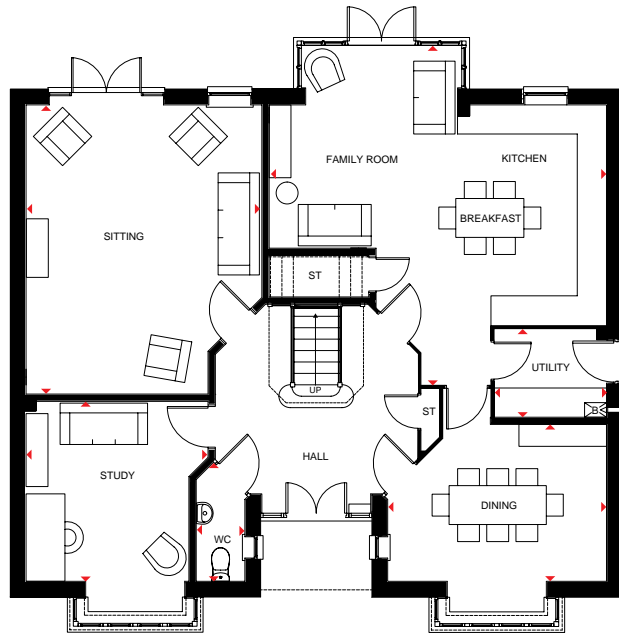
DAVID WILSON HOMES

WHERE QUALITY LIVES

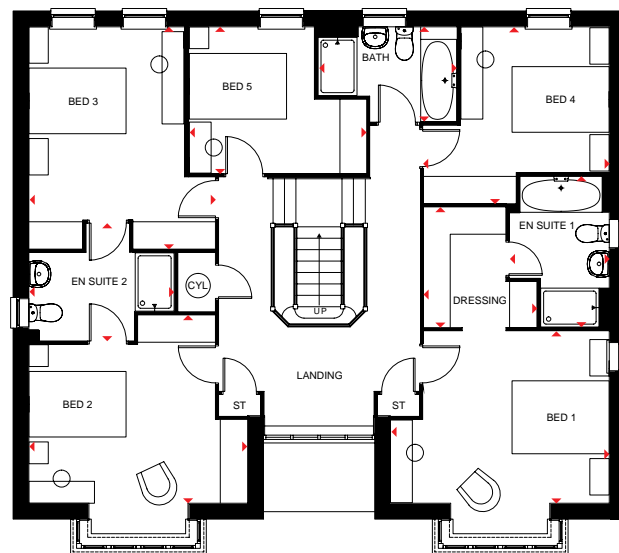
AMHERST HOUSE

Plot 183

A five bedroom home



GROUND FLOOR



FIRST FLOOR

KEY	B	Boiler
	ST	Store
	CYL	Cylinder
	◄◄	Dimension location

Ground Floor

Sitting	4850 x 5950 mm	15'10" x 19'6"
Kitchen/Family/Breakfast	6940 x 6970 mm	22'8" x 22'9"
Dining	4562 x 4557 mm	15'0" x 14'9"
Study	3744 x 4303 mm	12'3" x 14'1"
Utility	2300 x 1807 mm	7'6" x 5'11"
WC	1060 x 2450 mm	3'5" x 8'0"

First Floor

Bedroom 1	4501 x 4136 mm	14'9" x 13'6"
Dressing	2326 x 2461 mm	7'7" x 8'0"
En suite 1	2050 x 3088 mm	6'7" x 10'1"
Bedroom 2	4501 x 4463 mm	14'9" x 14'7"
En suite 2	2987 x 2501 mm	9'9" x 8'2"
Bedroom 3	3825 x 4563 mm	12'6" x 14'11"
Bedroom 4	3624 x 3011 mm	11'9" x 9'9"
Bedroom 5	3825 x 3629 mm	12'5" x 11'9"
Bath	2851 x 1950 mm	9'4" x 6'4"

All images used are for illustrative purposes only. Floor plans are intended to give a general indication of the proposed floor layout only. The dimensions are accurate to within + or - 50mm but should not be used for carpet or flooring sizes, appliance spaces or items of furniture. Please ask our Sales Adviser for details of the treatments specified for individual plots. Individual features such as windows, brick and other materials' colours may vary, as may drainage, heating and electrical layouts. All images, photographs and dimensions are not intended to form part of any contract or warranty unless specifically incorporated in writing into the contract. SP347653

H586 09LR / H6731

BUTTERFLY HOUSE

A five bedroom detached home



The Oaks at Wedgwood Park, Wedgwood Drive, Nr Barlaston ST12 9ER

The Wedgwood Butterfly Bloom collection was inspired by Wedgwood Archive patterns, taken from pattern books held within the Museums Archive trust. It is noticeable due to its eclectic mix of pattern, with abundant blooms of English and Oriental flowers and butterflies.



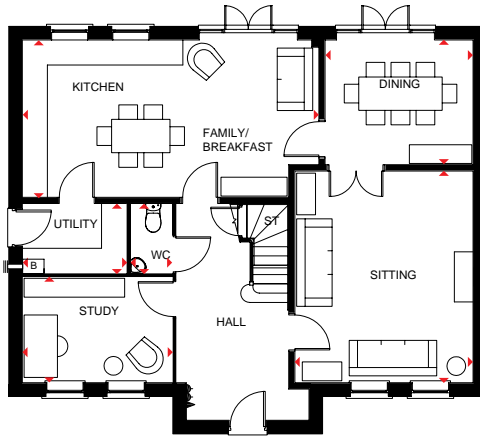
DAVID WILSON HOMES

WHERE QUALITY LIVES

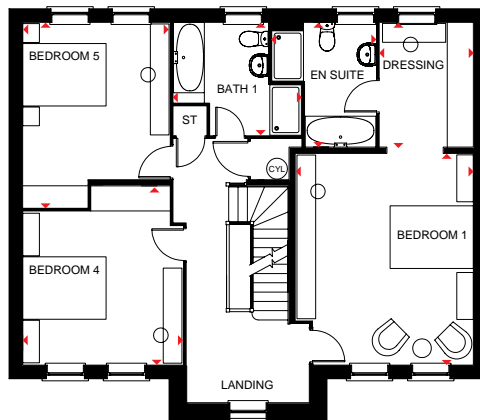
BUTTERFLY HOUSE

Plot 184

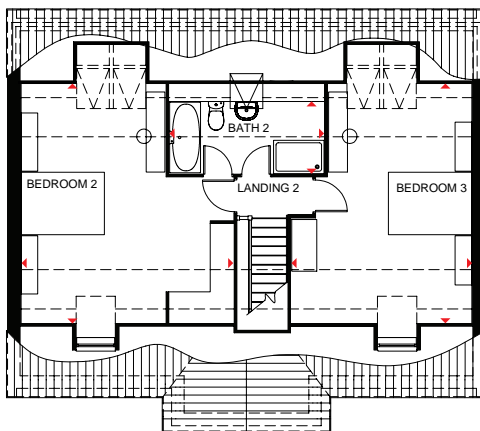
A five bedroom detached home



GROUND FLOOR



FIRST FLOOR



SECOND FLOOR

KEY	B	Boiler
	ST	Stair
	CYL	Cylinder
	◀▶	Dimension location

Ground Floor

Sitting	4275 x 5084 mm	14'0" x 16'8"
Kitchen/Family/Breakfast	7115 x 3775 mm	23'4" x 12'5"
Dining	3550 x 2994 mm	11'8" x 9'10"
Study	3605 x 2539 mm	11'10" x 8'4"
Utility	2497 x 1675 mm	8'2" x 5'6"
WC	1017 x 1675 mm	3'4" x 5'6"

First Floor

Bedroom 1	4250 x 5084 mm	13'9" x 16'7"
Dressing	2249 x 2994 mm	7'5" x 9'10"
En suite	2501 x 3006 mm	8'2" x 9'9"
Bedroom 4	3848 x 4303 mm	12'8" x 14'1"
Bedroom 5	3509 x 4450 mm	11'5" x 14'7"
Bath 1	3069 x 2682 mm	10'0" x 8'8"

Second Floor

Bedroom 2	5101 x 6654 mm	16'9" x 21'8"
Bedroom 3	4336 x 6654 mm	14'3" x 21'8"
Bath 2	3716 x 1989 mm	12'2" x 6'5"

All images used are for illustrative purposes only. Floor plans are intended to give a general indication of the proposed floor layout only. The dimensions are accurate to within + or - 50mm but should not be used for carpet or flooring sizes, appliance spaces or items of furniture. Please ask our Sales Adviser for details of the treatments specified for individual plots. Individual features such as windows, brick and other materials' colours may vary, as may drainage, heating and electrical layouts. All images, photographs and dimensions are not intended to form part of any contract or warranty unless specifically incorporated in writing into the contract. SP330502

H533 090T / H6731

CORNUCOPIA HOUSE

A five bedroom detached home



The Oaks at Wedgwood Park, Wedgwood Drive, Nr Barlaston ST12 9ER

Wedgwood's Cornucopia range of fine bone china white ware was inspired by the mythical 'Horn of Plenty'. The range is decorated with mythical creatures on ivory and dark navy with gold banding.



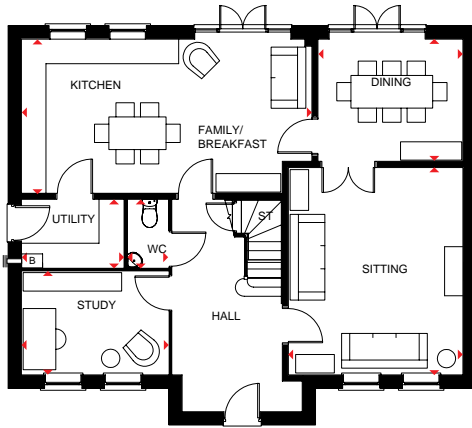
DAVID WILSON HOMES

WHERE QUALITY LIVES

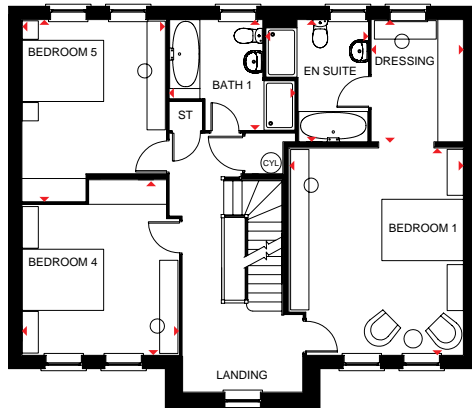
CORNUCOPIA HOUSE

Plot 185

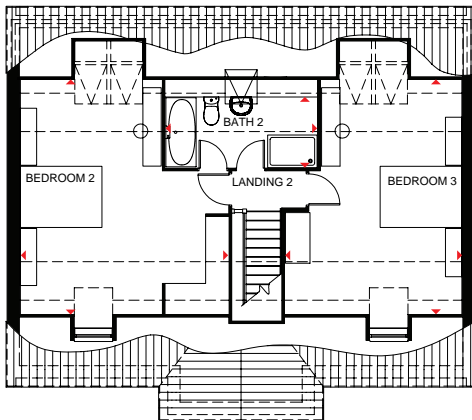
A five bedroom detached home



GROUND FLOOR



FIRST FLOOR



SECOND FLOOR

KEY	B	Boiler
	ST	Store
	CYL	Cylinder
	◄►	Dimension location

Ground Floor

Sitting	4275 x 5084 mm	14'0" x 16'8"
Kitchen/Family/Breakfast	7115 x 3775 mm	23'4" x 12'5"
Dining	3550 x 2994 mm	11'8" x 9'10"
Study	3605 x 2539 mm	11'10" x 8'4"
Utility	2497 x 1675 mm	8'2" x 5'6"
WC	1017 x 1675 mm	5'6" x 3'4"

First Floor

Bedroom 1	4250 x 5084 mm	13'9" x 16'8"
Dressing	2249 x 2994 mm	7'5" x 9'10"
En suite	2501 x 3006 mm	8'2" x 9'9"
Bedroom 4	3848 x 4303 mm	12'8" x 14'1"
Bedroom 5	3509 x 4450 mm	11'5" x 14'6"
Bath 1	3069 x 2682 mm	10'1" x 8'8"

Second Floor

Bedroom 2	5101 x 6654 mm	16'9" x 21'8"
Bedroom 3	4336 x 6654 mm	14'3" x 21'8"
Bath 2	3716 x 1989 mm	12'2" x 6'5"

All images used are for illustrative purposes only. Floor plans are intended to give a general indication of the proposed floor layout only. The dimensions are accurate to within + or - 50mm but should not be used for carpet or flooring sizes, appliance spaces or items of furniture. Please ask our Sales Adviser for details of the treatments specified for individual plots. Individual features such as windows, brick and other materials' colours may vary, as may drainage, heating and electrical layouts. All images, photographs and dimensions are not intended to form part of any contract or warranty unless specifically incorporated in writing into the contract. SP330501

H533 0908 / H6731

CUCKOO HOUSE

A five bedroom detached home



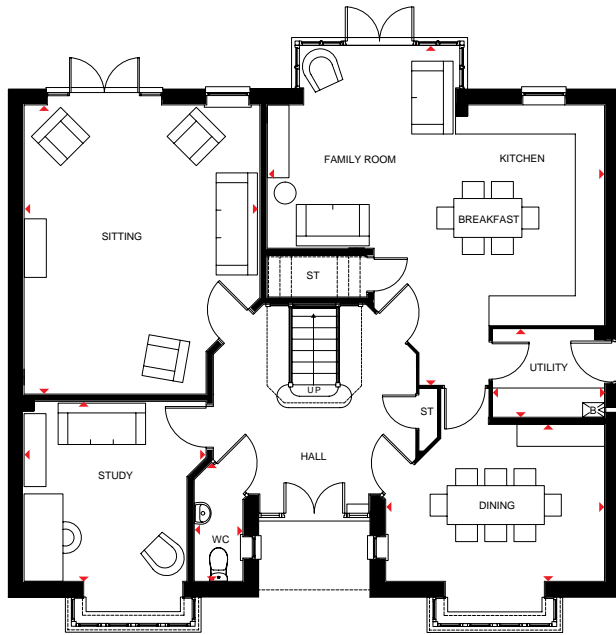
The Oaks at Wedgwood Park, Wedgwood Drive, Nr Barlaston ST12 9ER

The Wedgwood Cuckoo collection is decorated with a design of Chinese flowers and birds and dates back to the early 19th century.

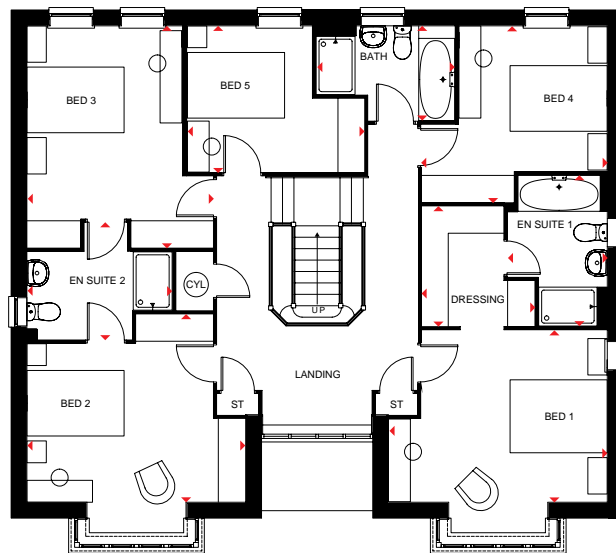


DAVID WILSON HOMES

WHERE QUALITY LIVES



GROUND FLOOR



FIRST FLOOR

KEY	B	Boiler
	ST	Store
	CYL	Cylinder
	◀▶	Dimension location

CUCKOO HOUSE

Plot 186

A five bedroom home

Ground Floor

Sitting	4850 x 5950 mm	15'10" x 19'6"
Kitchen/Family/Breakfast	6940 x 6970 mm	22'8" x 22'9"
Dining	4562 x 4557 mm	15'0" x 14'9"
Study	3744 x 4303 mm	12'3" x 14'1"
Utility	2300 x 1807 mm	7'6" x 5'11"
WC	1060 x 2450 mm	3'5" x 8'0"

First Floor

Bedroom 1	4501 x 4136 mm	14'9" x 13'6"
Dressing	2326 x 2461 mm	7'7" x 8'0"
En suite 1	2050 x 3088 mm	6'7" x 10'1"
Bedroom 2	4501 x 4463 mm	14'9" x 14'7"
En suite 2	2987 x 2501 mm	9'9" x 8'2"
Bedroom 3	3825 x 4563 mm	12'6" x 14'11"
Bedroom 4	3624 x 3011 mm	11'9" x 9'9"
Bedroom 5	3825 x 3629 mm	12'5" x 11'9"
Bath	2851 x 1950 mm	9'4" x 6'4"

All images used are for illustrative purposes only. Floor plans are intended to give a general indication of the proposed floor layout only. The dimensions are accurate to within + or - 50mm but should not be used for carpet or flooring sizes, appliance spaces or items of furniture. Please ask our Sales Adviser for details of the treatments specified for individual plots. Individual features such as windows, brick and other materials' colours may vary, as may drainage, heating and electrical layouts. All images, photographs and dimensions are not intended to form part of any contract or warranty unless specifically incorporated in writing into the contract. SP330503

H586 09LR / H6731

EDME HOUSE

A five bedroom detached home



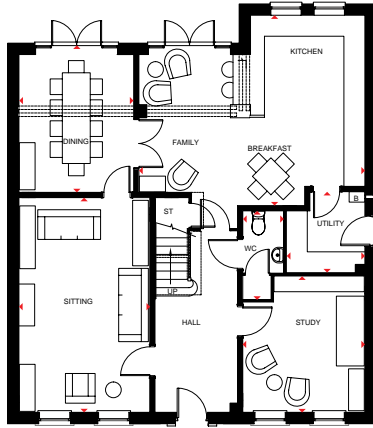
The Oaks at Wedgwood Park, Wedgwood Drive, Nr Barlaston ST12 9ER

Described by Wedgwood as 'the most aristocratic of Wedgwood's patterns', Edme is characterised by sophisticated Georgian shapes and a design motif drawn from Wedgwood's original 18th century archives.

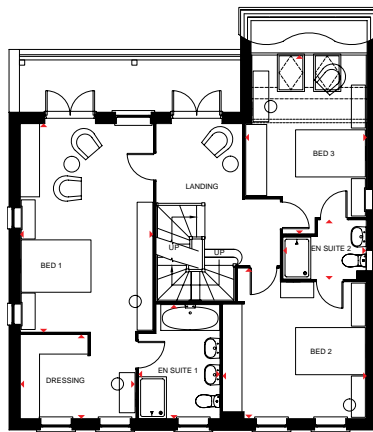


DAVID WILSON HOMES

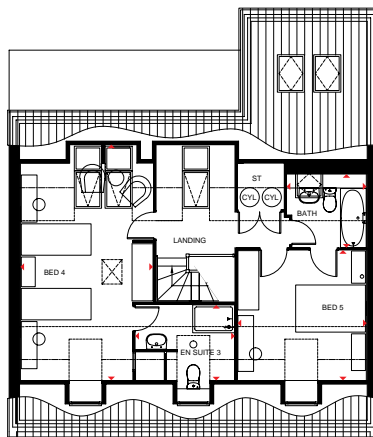
WHERE QUALITY LIVES



GROUND FLOOR



FIRST FLOOR



SECOND FLOOR

KEY ST Store
 CYL Cylinder
 ◀▶ Dimension location

EDME HOUSE

Plot 182

A five bedroom detached home

Ground Floor

Sitting	3750 x 6153 mm	12'3" x 20'2"
Kitchen/Family/Breakfast	6478 x 5453 mm	21'3" x 17'10"
Dining	3287 x 4050 mm	10'8" x 13'3"
Study	3500 x 3911 mm	11'5" x 12'9"
Utility	2250 x 2325 mm	7'4" x 7'7"
WC	1161 x 1775 mm	3'8" x 5'8"

First Floor

Bedroom 1	3811 x 8453 mm	12'5" x 27'7"
Dressing	1925 x 2400 mm	6'3" x 7'9"
En suite 1	2328 x 3268 mm	7'6" x 10'8"
Bedroom 2	4090 x 4325 mm	13'4" x 14'2"
En suite 2	2386 x 1687 mm	7'9" x 5'6"
Bedroom 3	3464 x 5079 mm	11'4" x 16'7"

Second Floor

Bedroom 4	3793 x 7377 mm	12'4" x 24'2"
En suite 3	2839 x 2381 mm	9'3" x 9'3"
Bedroom 5	3688 x 4372 mm	12'1" x 14'3"
Bath	2275 x 1700 mm	7'5" x 5'6"

All images used are for illustrative purposes only. Floor plans are intended to give a general indication of the proposed floor layout only. The dimensions are accurate to within + or - 50mm but should not be used for carpet or flooring sizes, appliance spaces or items of furniture. Please ask our Sales Adviser for details of the treatments specified for individual plots. Individual features such as windows, brick and other materials' colours may vary, as may drainage, heating and electrical layouts. All images, photographs and dimensions are not intended to form part of any contract or warranty unless specifically incorporated in writing into the contract. SP347614 H502 0907 / H6731

EQUESTRIA HOUSE

A five bedroom detached home



The Oaks at Wedgwood Park, Wedgwood Drive, Nr Barlaston ST12 9ER

The Equestria range of Wedgwood Pottery celebrates the 'quintessentially English equestrian lifestyle.



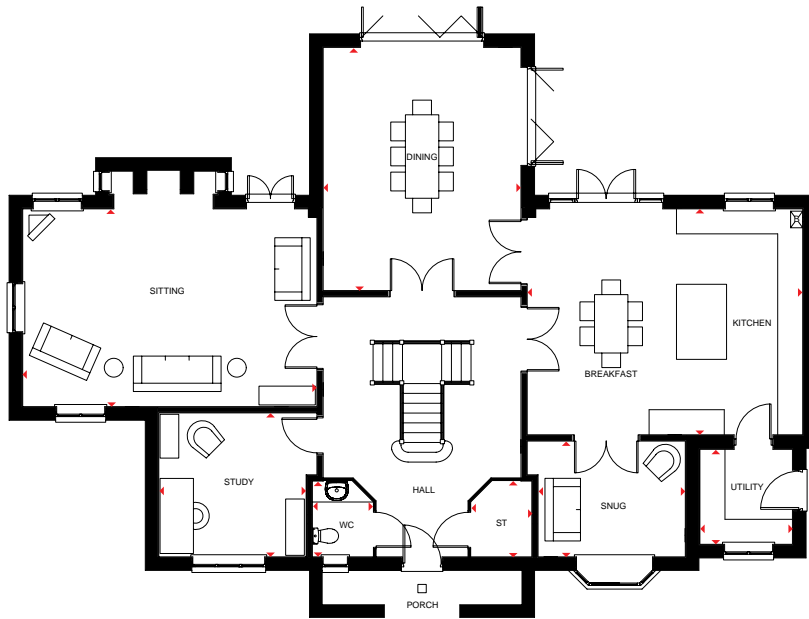
DAVID WILSON HOMES

WHERE QUALITY LIVES

EQUESTRIA HOUSE

Plot 187

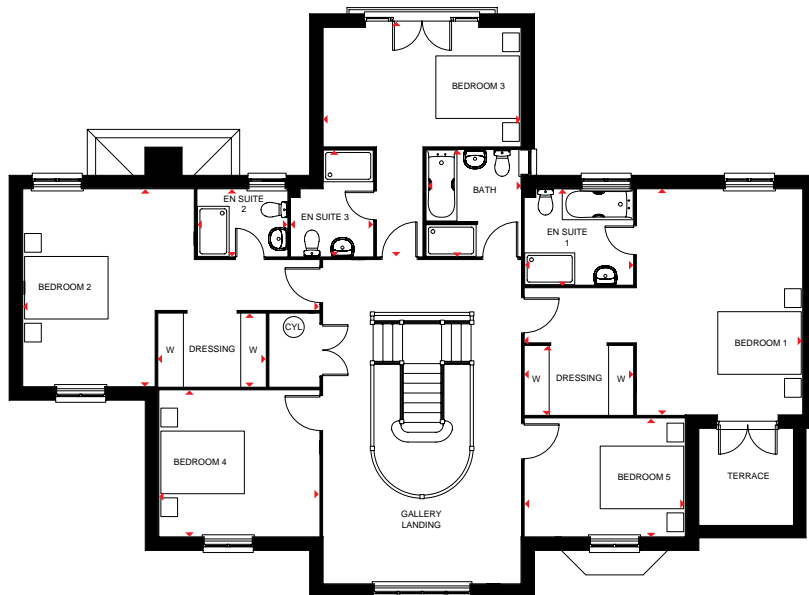
A five bedroom detached home



GROUND FLOOR

Ground Floor

Sitting	7050 x 4740 mm	23'1" x 15'6"
Dining	4740 x 5827 mm	15'6" x 19'1"
Utility	2278 x 2275 mm	7'5" x 7'5"
Study	3788 x 3450 mm	12'4" x 11'3"
Kitchen / Breakfast	6601 x 5415 mm	21'7" x 17'9"
Snug	3788 x 2775 mm	12'5" x 9'1"
WC	1451 x 1815 mm	4'8" x 5'9"



FIRST FLOOR

First Floor

Bed 1	6662 x 5427 mm	21'9" x 17'8"
Dressing	2600 x 1650 mm	8'5" x 5'4"
Bed 2	7111 x 4740 mm	23'3" x 15'6"
Dressing	2575 x 1750 mm	8'4" x 5'7"
Bed 3	4740 x 5487 mm	15'6" x 18'0"
Bed 4	3849 x 3511 mm	12'7" x 11'6"
Bed 5	3849 x 2836 mm	12'7" x 9'3"
En suite 1	2600 x 2295 mm	8'6" x 7'6"
En suite 2	2155 x 1619 mm	7'0" x 5'3"
En suite 3	1971 x 2550 mm	6'5" x 8'4"
Bath	2275 x 2550 mm	8'4" x 7'4"
Dressing	2575 x 1750 mm	8'5" x 5'8"

KEY	B	Boiler
	ST	Store
	CYL	Cylinder
	◀▶	Dimension location

All images used are for illustrative purposes only. Floor plans are intended to give a general indication of the proposed floor layout only. The dimensions are accurate to within + or - 50mm but should not be used for carpet or flooring sizes, appliance spaces or items of furniture. Please ask our Sales Adviser for details of the treatments specified for individual plots. Individual features such as windows, brick and other materials' colours may vary, as may drainage, heating and electrical layouts. All images, photographs and dimensions are not intended to form part of any contract or warranty unless specifically incorporated in writing into the contract. SP330450

DM06 0904 / H6731

ETHEREAL HOUSE

A five bedroom detached home



The Oaks at Wedgwood Park, Wedgwood Drive, Nr Barlaston ST12 9ER

The patterns of nature have served Wedgwood for many decades as inspiration for some of their most iconic patterns. The Ethereal collection is characterised by a rippling pattern that mimics the grain of wood, the shifting of sand or the ocean's waves.



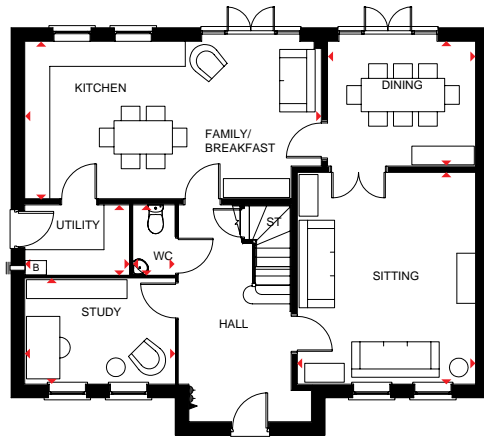
DAVID WILSON HOMES

WHERE QUALITY LIVES

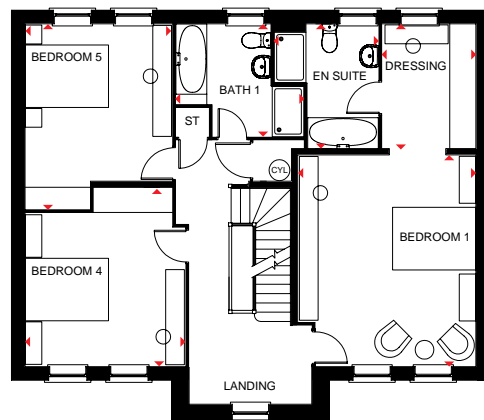
ETHEREAL HOUSE

Plot 188

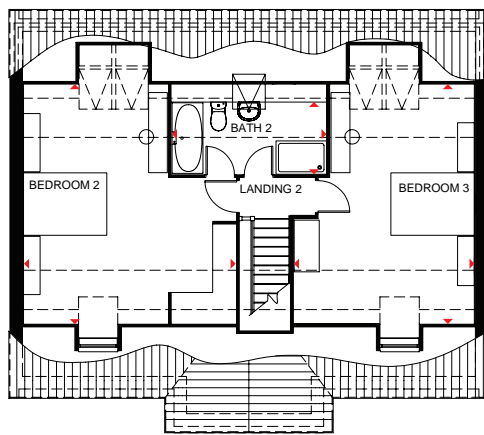
A five bedroom detached home



GROUND FLOOR



FIRST FLOOR



SECOND FLOOR

KEY	B	Boiler
	ST	Store
	CYL	Cylinder
	◄►	Dimension location

Ground Floor

Sitting	4275 x 5084 mm	14'0" x 16'8"
Kitchen/Family/Breakfast	7115 x 3775 mm	23'4" x 12'5"
Dining	3550 x 2994 mm	11'8" x 9'10"
Study	3605 x 2539 mm	11'10" x 8'4"
Utility	2497 x 1675 mm	8'2" x 5'6"
WC	1017 x 1675 mm	3'4" x 5'6"

First Floor

Bedroom 1	4250 x 5084 mm	13'9" x 16'7"
Dressing	2249 x 2994mm	7'5" x 9'10"
En suite	2501 x 3006 mm	8'2" x 9'9"
Bedroom 4	3848 x 4303 mm	12'8" x 14'1"
Bedroom 5	3509 x 4450 mm	11'5" x 14'7"
Bath 1	3069 x 2682 mm	10'0" x 8'8"

Second Floor

Bedroom 2	5101 x 6654 mm	16'9" x 21'8"
Bedroom 3	4336 x 6654 mm	14'3" x 21'8"
Bath 2	3716 x 1989 mm	12'2" x 6'5"

All images used are for illustrative purposes only. Floor plans are intended to give a general indication of the proposed floor layout only. The dimensions are accurate to within + or - 50mm but should not be used for carpet or flooring sizes, appliance spaces or items of furniture. Please ask our Sales Adviser for details of the treatments specified for individual plots. Individual features such as windows, brick and other materials' colours may vary, as may drainage, heating and electrical layouts. All images, photographs and dimensions are not intended to form part of any contract or warranty unless specifically incorporated in writing into the contract. SP347731 H533 090T / H6731

FLORENTINE HOUSE

A five bedroom detached home



The Oaks at Wedgwood Park, Wedgwood Drive, Nr Barlaston ST12 9ER

The Florentine collection was first introduced at Wedgwood in 1931 and is recognised by an ornate border detailed with mythical creatures and floral designs set on a white, fine bone china.



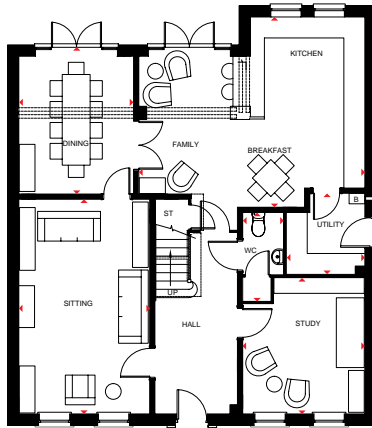
DAVID WILSON HOMES

WHERE QUALITY LIVES

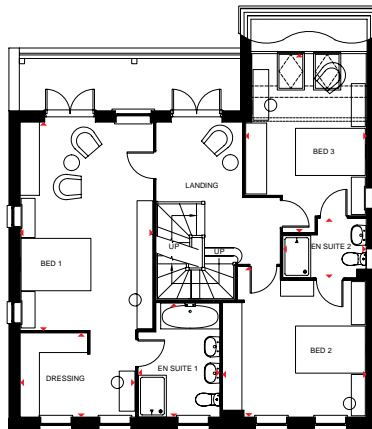
FLORENTINE HOUSE

Plot 189

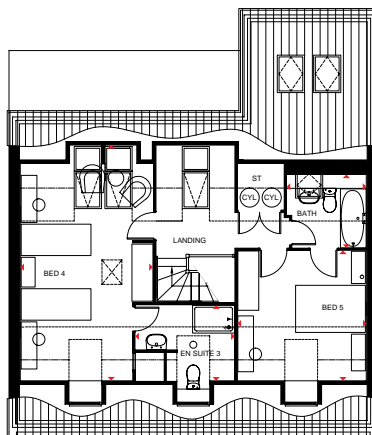
A five bedroom detached home



GROUND FLOOR



FIRST FLOOR



SECOND FLOOR

KEY ST Store
 CYL Cylinder
 ◀▶ Dimension location

Ground Floor

Sitting	3750 x 6153 mm	12'3" x 20'2"
Kitchen/Family/Breakfast	6478 x 5453 mm	21'3" x 17'10"
Dining	3287 x 4050 mm	10'8" x 13'3"
Study	3500 x 3911 mm	11'5" x 12'9"
Utility	2250 x 2325 mm	7'4" x 7'7"
WC	1161 x 1775 mm	3'8" x 5'8"

First Floor

Bedroom 1	3811 x 8453 mm	12'5" x 27'7"
Dressing	1925 x 2400 mm	6'3" x 7'9"
En suite 1	2328 x 3268 mm	7'6" x 10'8"
Bedroom 2	4090 x 4325 mm	13'4" x 14'2"
En suite 2	2386 x 1687 mm	7'9" x 5'6"
Bedroom 3	3464 x 5079 mm	11'4" x 16'7"

Second Floor

Bedroom 4	3793 x 7377 mm	12'4" x 24'2"
En suite 3	2839 x 2381 mm	9'3" x 9'3"
Bedroom 5	3688 x 4372 mm	12'1" x 14'3"
Bath	2275 x 1700 mm	7'5" x 5'6"

All images used are for illustrative purposes only. Floor plans are intended to give a general indication of the proposed floor layout only. The dimensions are accurate to within + or - 50mm but should not be used for carpet or flooring sizes, appliance spaces or items of furniture. Please ask our Sales Adviser for details of the treatments specified for individual plots. Individual features such as windows, brick and other materials' colours may vary, as may drainage, heating and electrical layouts. All images, photographs and dimensions are not intended to form part of any contract or warranty unless specifically incorporated in writing into the contract. SP330500

H502 0907 / H6731

HARLEQUIN HOUSE

A five bedroom detached home



The Oaks at Wedgwood Park, Wedgwood Drive, Nr Barlaston ST12 9ER

The Harlequin collection by Wedgwood features bright colours and stunning designs, bringing vibrant colour and energy into people's homes.



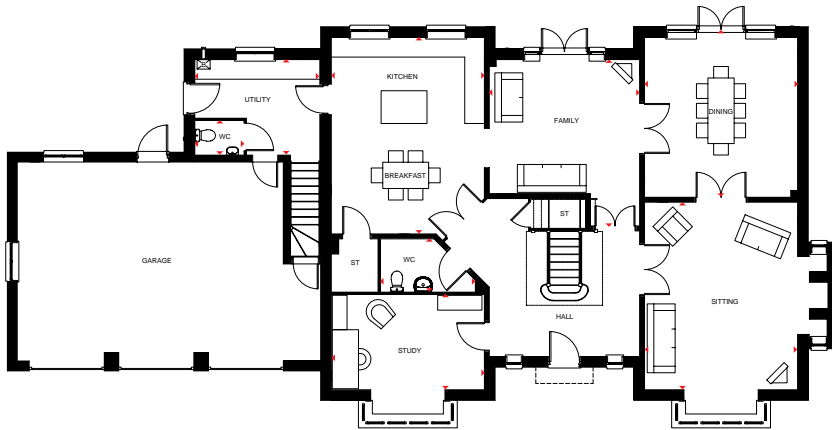
DAVID WILSON HOMES

WHERE QUALITY LIVES

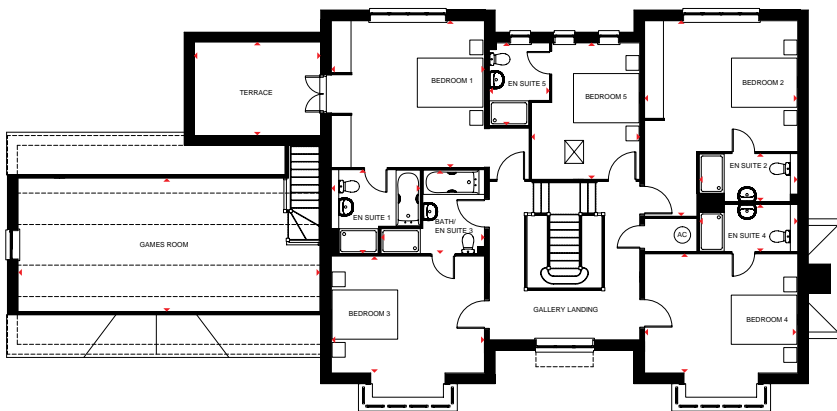
HARLEQUIN HOUSE

Plot 190

A five bedroom detached home



GROUND FLOOR



FIRST FLOOR

KEY	B	Boiler
	ST	Store
	AC	Airing cupboard
	◀▶	Dimension location

Ground Floor

Sitting Room	4668 x 6431 mm	15'3" x 21'1"
Kitchen/Breakfast	4128 x 6190 mm	13'8" x 20'3"
Family	4584 x 5074 mm	15'0" x 16'6"
Dining	4668 x 4875 mm	15'4" x 16'0"
Study	4668 x 3625 mm	15'3" x 11'9"
Utility	3813 x 2800 mm	12'5" x 9'1"
WC	1489 x 1085 mm	4'8" x 3'6"
WC	3167 x 1612 mm	10'4" x 5'3"
Garage	9203 x 6018 mm	30'2" x 19'7"

First Floor

Bed 1	6019 x 4467 mm	19'7" x 14'7"
En suite 1	2713 x 2548 mm	8'11" x 8'4"
Bed 2	4668 x 5949 mm	15'3" x 19'5"
En suite 2	3000 x 1440 mm	9'8" x 4'7"
Bed 3	4668 x 4265 mm	15'3" x 14'0"
Bath/En suite 3	3155 x 2548 mm	10'4" x 8'3"
Bed 4	4668 x 4335 mm	15'3" x 14'2"
En suite 4	3000 x 1419 mm	9'8" x 4'7"
Bed 5	3296 x 4150 mm	10'10" x 13'7"
En suite 5	1825 x 2578 mm	6'0" x 8'5"
Games Room	9203 x 4018 mm	30'2" x 13'2"

Games Room overall dims includes lowered ceiling area.

All images used are for illustrative purposes only. Floor plans are intended to give a general indication of the proposed floor layout only. The dimensions are accurate to within + or - 50mm but should not be used for carpet or flooring sizes, appliance spaces or items of furniture. Please ask our Sales Adviser for details of the treatments specified for individual plots. Individual features such as windows, brick and other materials' colours may vary, as may drainage, heating and electrical layouts. All images, photographs and dimensions are not intended to form part of any contract or warranty unless specifically incorporated in writing into the contract. SP330497

DM10 0910 / H6731

INDIA HOUSE

A five bedroom detached home



The Oaks at Wedgwood Park, Wedgwood Drive, Nr Barlaston ST12 9ER

The Wedgwood India Collection is inspired by the rich cultural heritage of India. It is characterised by its exotic and alluring design details.



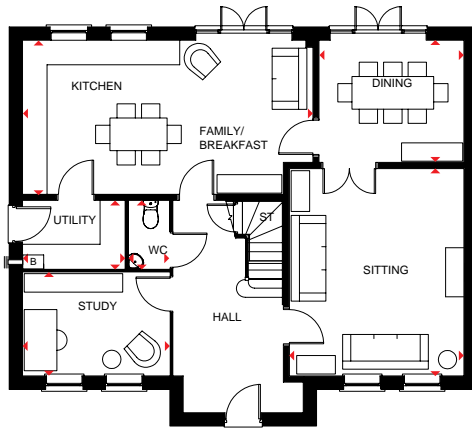
DAVID WILSON HOMES

WHERE QUALITY LIVES

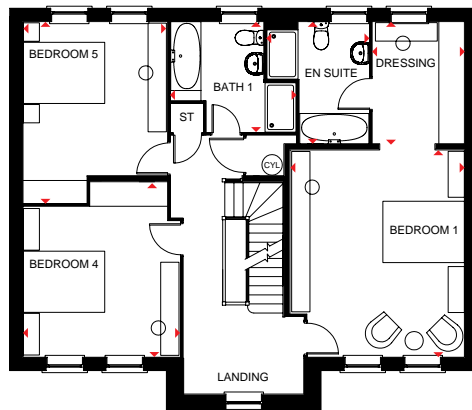
INDIA HOUSE

Plot 191

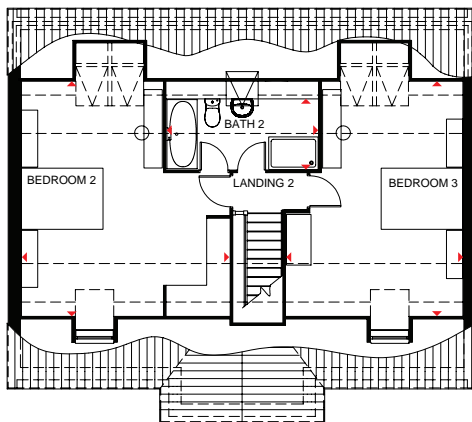
A five bedroom detached home



GROUND FLOOR



FIRST FLOOR



SECOND FLOOR

KEY	B	Boiler
	ST	Store
	CYL	Cylinder
	◀▶	Dimension location

Ground Floor

Sitting	4275 x 5084 mm	14'0" x 16'8"
Kitchen/Family/Breakfast	7115 x 3775 mm	23'4" x 12'5"
Dining	3550 x 2994 mm	11'8" x 9'10"
Study	3605 x 2539 mm	11'10" x 8'4"
Utility	2497 x 1675 mm	8'2" x 5'6"
WC	1017 x 1675 mm	5'6" x 3'4"

First Floor

Bedroom 1	4250 x 5084 mm	13'9" x 16'8"
Dressing	2249 x 2994 mm	7'5" x 9'10"
En suite	2501 x 3006 mm	8'2" x 9'9"
Bedroom 4	3848 x 4303 mm	12'8" x 14'1"
Bedroom 5	3509 x 4450 mm	11'5" x 14'6"
Bath 1	3069 x 2682 mm	10'1" x 8'8"

Second Floor

Bedroom 2	5101 x 6654 mm	16'9" x 21'8"
Bedroom 3	4336 x 6654 mm	14'3" x 21'8"
Bath 2	3716 x 1989 mm	12'2" x 6'5"

All images used are for illustrative purposes only. Floor plans are intended to give a general indication of the proposed floor layout only. The dimensions are accurate to within + or - 50mm but should not be used for carpet or flooring sizes, appliance spaces or items of furniture. Please ask our Sales Adviser for details of the treatments specified for individual plots. Individual features such as windows, brick and other materials' colours may vary, as may drainage, heating and electrical layouts. All images, photographs and dimensions are not intended to form part of any contract or warranty unless specifically incorporated in writing into the contract. SP347728

H533 0908 / H6731

INTAGLIO HOUSE

A five bedroom detached home



The Oaks at Wedgwood Park, Wedgwood Drive, Nr Barlaston ST12 9ER

Wedgwood's Intaglio collection draws its design inspiration from the Georgian era, the fresh white colourway is crisp, clean and contemporary. Intaglio pays homage to the traditional skills of knurling and engine turning - the arts of indenting designs in wet clay to give a distinctive finish.



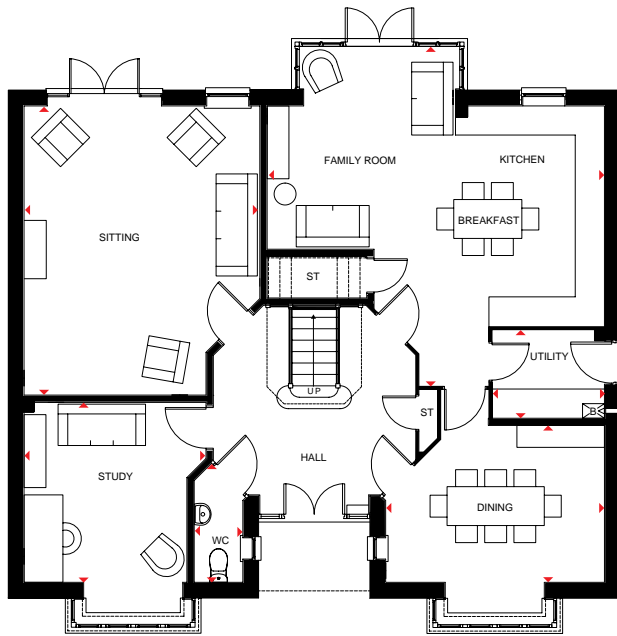
DAVID WILSON HOMES

WHERE QUALITY LIVES

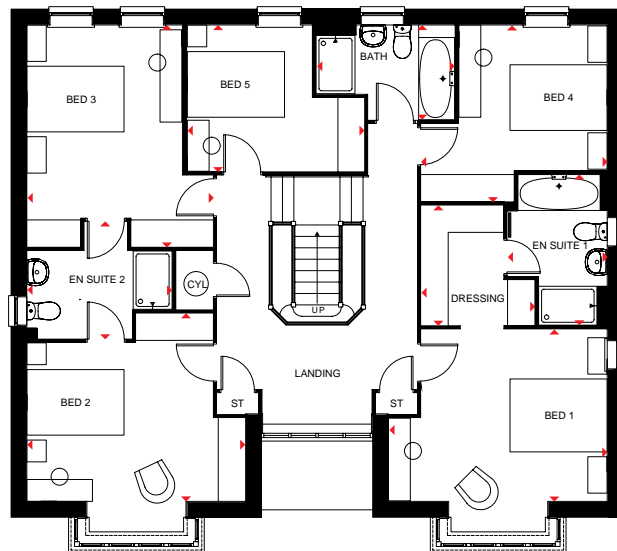
INTAGLIO HOUSE

Plot 192

A five bedroom detached home



GROUND FLOOR



FIRST FLOOR

KEY	B	Boiler
	ST	Store
	CYL	Cylinder
	◀▶	Dimension location

Ground Floor

Sitting	4850 x 5950 mm	15'10" x 19'6"
Kitchen/Family/Breakfast	6940 x 6970 mm	22'8" x 22'9"
Dining	4562 x 4557 mm	15'0" x 14'9"
Study	3744 x 4303 mm	12'3" x 14'1"
Utility	2300 x 1807 mm	7'6" x 5'9"
WC	1060 x 2450 mm	3'5" x 8'0"

First Floor

Bedroom 1	4501 x 4136 mm	14'9" x 13'6"
Dressing	2326 x 2461 mm	7'7" x 8'0"
En suite 1	2050 x 3088 mm	6'7" x 10'1"
Bedroom 2	4501 x 4463 mm	14'9" x 14'6"
En suite 2	2987 x 2501 mm	9'9" x 8'2"
Bedroom 3	3825 x 4463 mm	12'6" x 14'6"
Bedroom 4	3624 x 3011 mm	11'9" x 9'9"
Bedroom 5	3825 x 3629 mm	12'5" x 11'9"
Bath	2851 x 1950 mm	9'4" x 6'4"

All images used are for illustrative purposes only. Floor plans are intended to give a general indication of the proposed floor layout only. The dimensions are accurate to within + or - 50mm but should not be used for carpet or flooring sizes, appliance spaces or items of furniture. Please ask our Sales Adviser for details of the treatments specified for individual plots. Individual features such as windows, brick and other materials' colours may vary, as may drainage, heating and electrical layouts. All images, photographs and dimensions are not intended to form part of any contract or warranty unless specifically incorporated in writing into the contract. SP330504 H586 09LT / H6731

MACHIN HOUSE

A five bedroom detached home



The Oaks at Wedgwood Park, Wedgwood Drive, Nr Barlaston ST12 9ER

Arnold Machin RA was a sculptor, modeller and designer who produced a wide range of portrait medallions and figures for the Wedgwood Company.



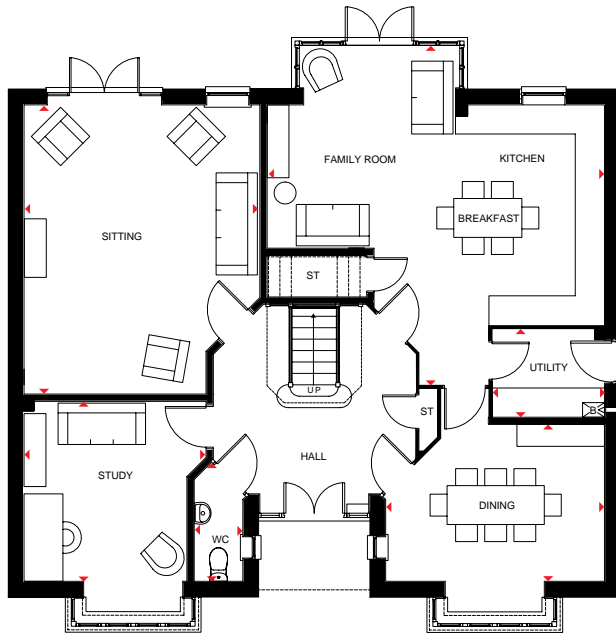
DAVID WILSON HOMES

WHERE QUALITY LIVES

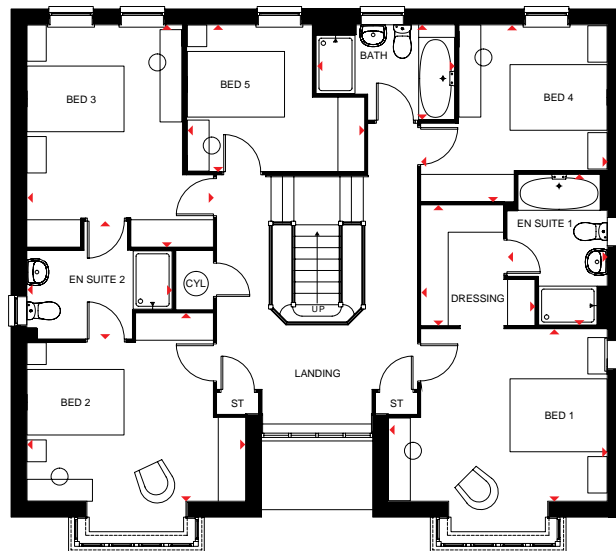
MACHIN HOUSE

Plot 207

A five bedroom home



GROUND FLOOR



FIRST FLOOR

KEY	B	Boiler
	ST	Store
	CYL	Cylinder
	◄►	Dimension location

Ground Floor

Sitting	4850 x 5950 mm	15'10" x 19'6"
Kitchen/Family/Breakfast	6940 x 6970 mm	22'8" x 22'9"
Dining	4562 x 4557 mm	15'0" x 14'9"
Study	3744 x 4303 mm	12'3" x 14'1"
Utility	2300 x 1807 mm	7'6" x 5'11"
WC	1060 x 2450 mm	3'5" x 8'0"

First Floor

Bedroom 1	4501 x 4136 mm	14'9" x 13'6"
Dressing	2326 x 2461 mm	7'7" x 8'0"
En suite 1	2050 x 3088 mm	6'7" x 10'1"
Bedroom 2	4501 x 4463 mm	14'9" x 14'7"
En suite 2	2987 x 2501 mm	9'9" x 8'2"
Bedroom 3	3825 x 4563 mm	12'6" x 14'11"
Bedroom 4	3624 x 3011 mm	11'9" x 9'9"
Bedroom 5	3825 x 3629 mm	12'5" x 11'9"
Bath	2851 x 1950 mm	9'4" x 6'4"

All images used are for illustrative purposes only. Floor plans are intended to give a general indication of the proposed floor layout only. The dimensions are accurate to within + or - 50mm but should not be used for carpet or flooring sizes, appliance spaces or items of furniture. Please ask our Sales Adviser for details of the treatments specified for individual plots. Individual features such as windows, brick and other materials' colours may vary, as may drainage, heating and electrical layouts. All images, photographs and dimensions are not intended to form part of any contract or warranty unless specifically incorporated in writing into the contract. SP347651

H586 09LR / H6731

THE CONSUMER CODE

FOR HOME BUILDERS



The Consumer Code for Home Builders ("the Code"), which came into effect in April 2010, applies to all Home Builders registered with the UK's main new Home Warranty Bodies; NHBC, Premier Guarantee and LABC Warranty.

The Code gives protection and rights to purchasers of new Homes. It requires all new home Buyers to be treated fairly and ensure they are fully informed about their purchase before and after they sign the contract.

The aim of the Code is for all new Home Buyers to:

- be treated fairly,
- know what levels of service to expect,

- be given reliable information about their purchase and their consumer rights before and after they move in, and
- know how to access speedy, low-cost dispute resolution arrangements to deal with complaints about breaches of the Code

The Code reinforces best practice among Home Builders to encourage a consistently high level of information and customer service. It builds on successful efforts already made by the industry to improve consumer satisfaction in recent years.

The Code covers every stage of the home-buying

purchase – pre-contract, exchange of contract and during occupation.

As a 5 star housebuilder we are committed to the Consumer Code for Home Builders. For more information on the Consumer Code for Home Builders please visit <http://www.consumercode.co.uk/>



DAVID WILSON HOMES

WHERE QUALITY LIVES

