



# The Webb

## 5 Bedroom Detached Home

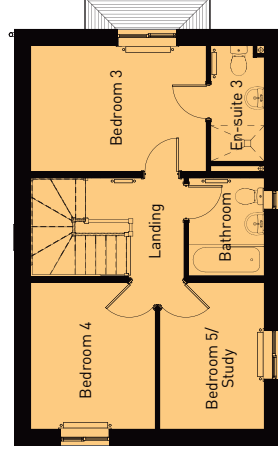
5-bedroom/ 3-bathroom house, the Webb provides families with more than sufficient space in which to enjoy their time together. An open-plan kitchen and dining area form the hub of the house, while a generous living room is the perfect place for relaxing. The cloakroom completes the ground floor. First floor features a family bathroom and three spacious bedrooms, one with an en-suite. On the second floor the central staircase divides the space into the principal bedroom which has the luxury of a walk-in dressing area and en-suite shower room and an additional double bedroom with en-suite facilities. All the bedrooms are generously sized. The property benefits from a detached garage, private driveway and garden.



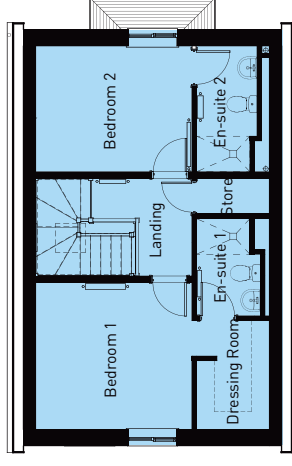
### Room Sizes

1477 sqft

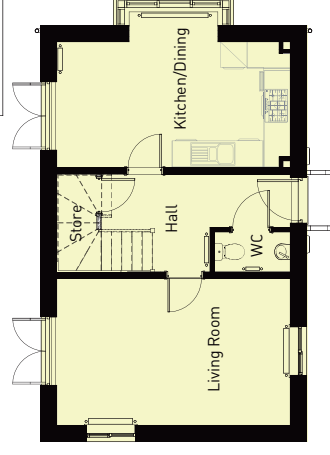
	<i>imperial</i>	<i>metric</i>
<b>GROUND FLOOR</b>		
Living Room	7'2" x 10'10"	5.25m x 3.30m
Kitchen Area	8'8" x 9'3"	2.65m x 2.83m
Dining Area	8'6" x 9'3"	2.60m x 2.83m
Hall	13'11" x 7'	4.25m x 2.15m
WC	5'6" x 2'10"	1.69m x 0.88m
<b>FIRST FLOOR</b>		
Bathroom	5'6" x 7'2"	1.69m x 2.19m
Bedroom Three	12'10" x 9'3"	3.93m x 2.83m
Ensuite	3'10" x 8'8"	1.19m x 2.65m
Bedroom Four	9'1" x 10'10"	2.78m x 3.30m
Bedroom Five	7'7" x 10'10"	2.33m x 3.30m
<b>SECOND FLOOR</b>		
Master Bedroom	11'5" x 10'10"	3.50m x 3.30m
Ensuite	4'7" x 7'1"	1.41m x 2.16m
Dressing	5'3" x 8'	1.62m x 2.44m
Store	5'3" x 2'7"	1.62m x 0.79m
Bedroom Two	11'5" x 9'3"	3.50m x 2.83m
Ensuite	4'4" x 9'3"	1.34m x 2.83m



FIRST FLOOR



SECOND FLOOR



GROUND FLOOR