

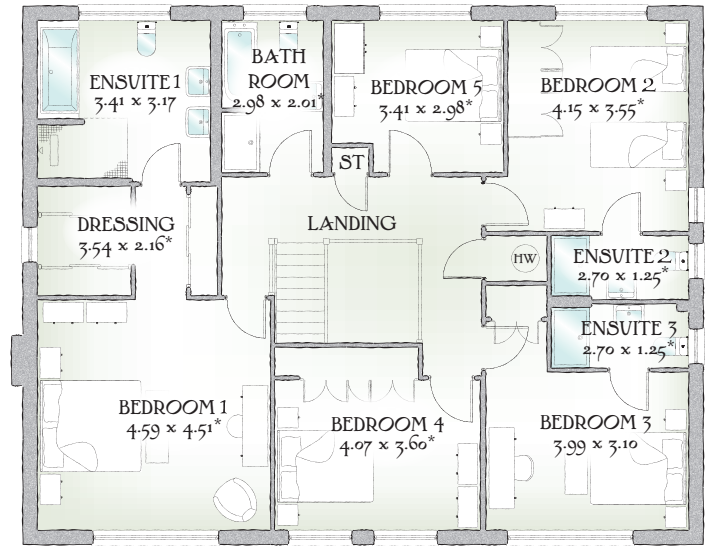
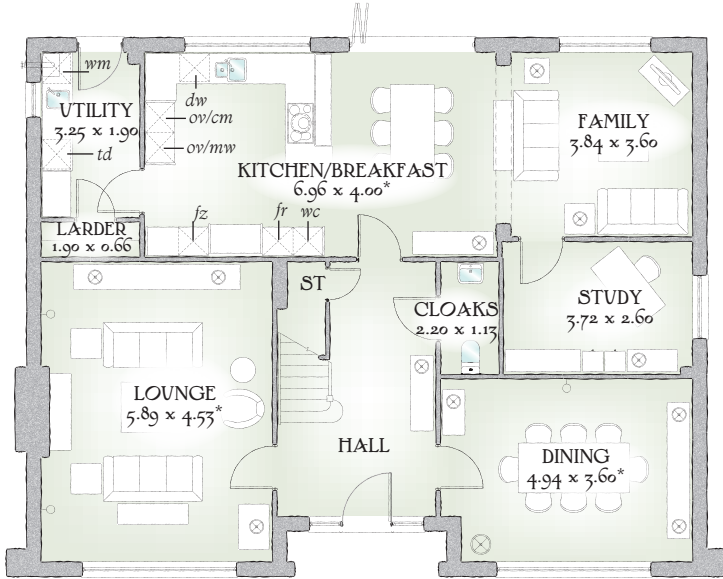


# Highgrove

FIVE BEDROOM HOME



 REDROW



2764 SQ FT | FIVE BEDROOM HOME

The Highgrove is a masterpiece of modern architecture, that captures the charm & craftsmanship of days gone by, and combines these with the best in modern interior design, to create an elegant home of spacious proportions and outstanding quality.

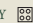
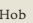
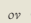
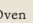
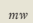
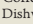
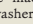
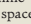
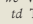
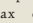
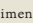
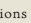
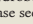
## GROUND FLOOR

|                       |                |                |
|-----------------------|----------------|----------------|
| Lounge                | 19'4" x 14'10" | 5.89 x 4.53 m* |
| Kitchen/<br>Breakfast | 22'10" x 13'1" | 6.96 x 4.00 m* |
| Family                | 12'7" x 11'10" | 3.84 x 3.60 m  |
| Dining                | 16'2" x 11'10" | 4.94 x 3.60 m* |
| Study                 | 12'2" x 8'6"   | 3.72 x 2.60 m  |
| Utility               | 10'8" x 6'3"   | 3.25 x 1.90 m  |
| Cloaks                | 7'3" x 3'8"    | 2.20 x 1.13 m  |
| Larder                | 6'3" x 2'2"    | 1.90 x 0.66 m  |

## FIRST FLOOR

|            |                |                |
|------------|----------------|----------------|
| Bedroom 1  | 15'1" x 14'10" | 4.59 x 4.51 m  |
| En-suite 1 | 11'2" x 10'5"  | 3.41 x 3.17 m* |
| Dressing   | 11'7" x 7'1"   | 3.54 x 2.16 m* |
| Bedroom 2  | 13'7" x 11'8"  | 4.15 x 3.55 m  |
| En-suite 2 | 8'10" x 4'1"   | 2.70 x 1.25 m* |
| Bedroom 3  | 13'1" x 10'2"  | 3.99 x 3.10 m  |
| En-suite 3 | 8'10" x 4'1"   | 2.70 x 1.25 m* |
| Bedroom 4  | 13'4" x 11'10" | 4.07 x 3.60 m* |
| Bedroom 5  | 11'2" x 9'9"   | 3.41 x 2.98 m* |
| Bathroom   | 9'9" x 6'7"    | 2.98 x 2.01 m* |

Customers should note this illustration is an example of The Highgrove house type. All dimensions indicated are approximate and the furniture layout is for illustrative purposes only. Homes may be 'handed' (mirror image) versions of the illustrations, and may be detached, semi-detached or terraced. Materials used may differ from plot to plot including render and roof tile colours. Detailed plans and specifications are available for inspection for each plot at our Sales Centre during working hours and customers must check their individual specifications prior to making a reservation.

KEY  Hob  Oven  Microwave  Fridge  Freezer  
 Coffee machine  Wine cooler  Washing machine  space  
 Dishwasher  Tumble dryer  Hot Water Cylinder  
 Cupboard

\*Max dimensions Note: Bedroom dimensions taken into wardrobe recess. All wardrobes are subject to site specification. Please see Sales Consultant for further details.

Traditional homes, built the way you remember