

No.8

5 Bedroom Detached Home



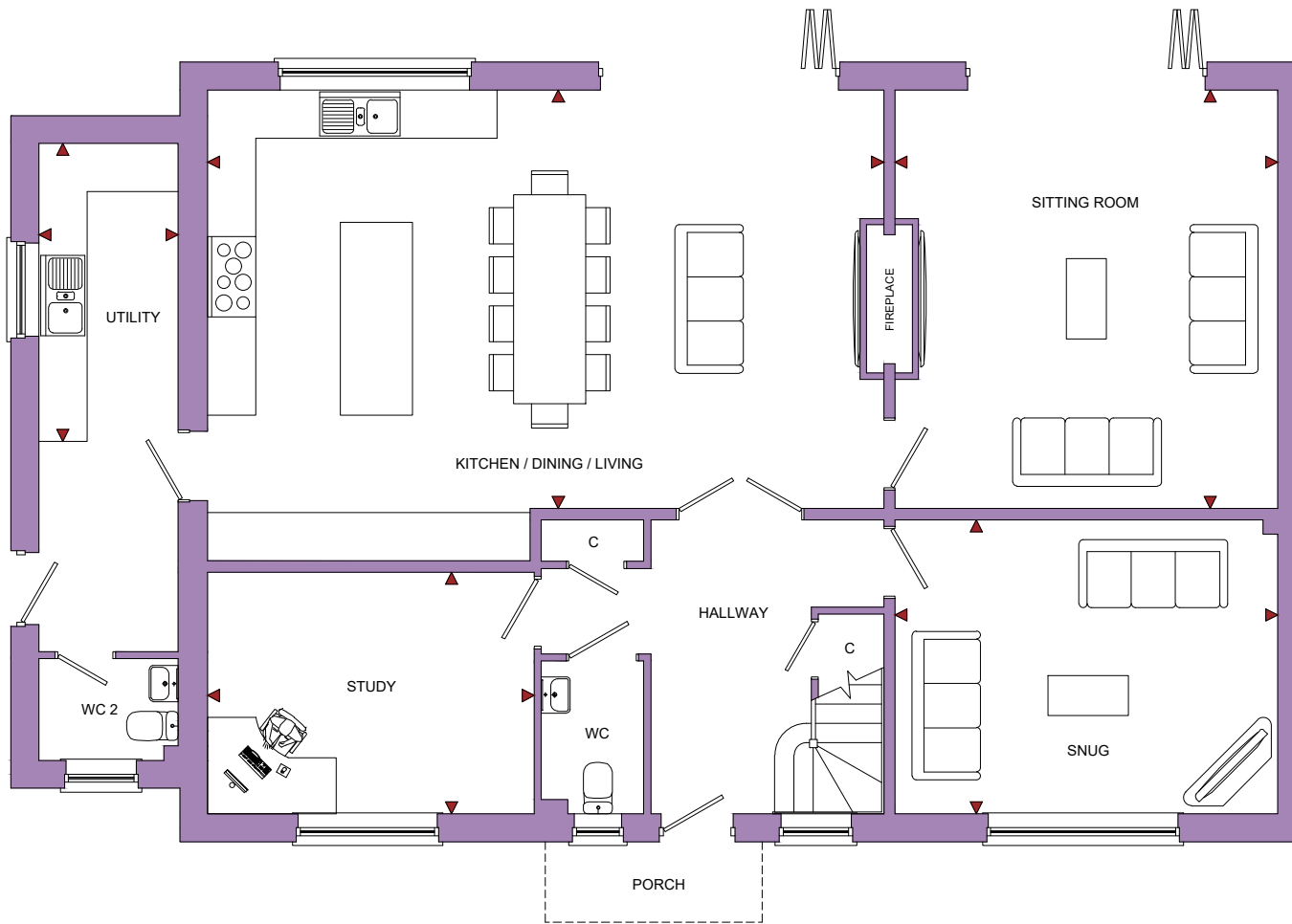
This CGI is an indicative representation of the external finish of this house type on one of the properties on this development. The final appearance of each property may need to be altered during the construction process, particularly when dealing with ground levels. Our sales representative will be happy to discuss the external finish on any specific plot with you.

No.8

5 Bedroom Detached Home

Privet Court

Gotherington, Gloucestershire, GL52 9QU



ROOM	IMPERIAL / "	METRIC / mm
Kitchen / Dining / Living	27' 7" x 17' 1"	8410 x 5210mm
Sitting Room	15' 8" x 17' 1"	4760 x 5210mm
Snug	15' 8" x 12' 0"	4760 x 3660mm
Study	13' 4" x 9' 11"	4062 x 3010mm
Utility	5' 8" x 12' 2"	1735 x 3710mm

TOTAL FLOOR AREA
2720ft² / 252.7m²

www.bellhomes.com

We strive to make each home and development as varied and interesting as possible. Therefore the above is for illustration purposes only and individual properties may vary. Please ask for details of specific properties. Every care has been taken with the preparation of this information, which has been produced for your guidance only and does not form part of a contract. The Plans are NOT TO SCALE, and may vary on site. Please do not use this information for purchase of furnishings and furniture.


bellhomes

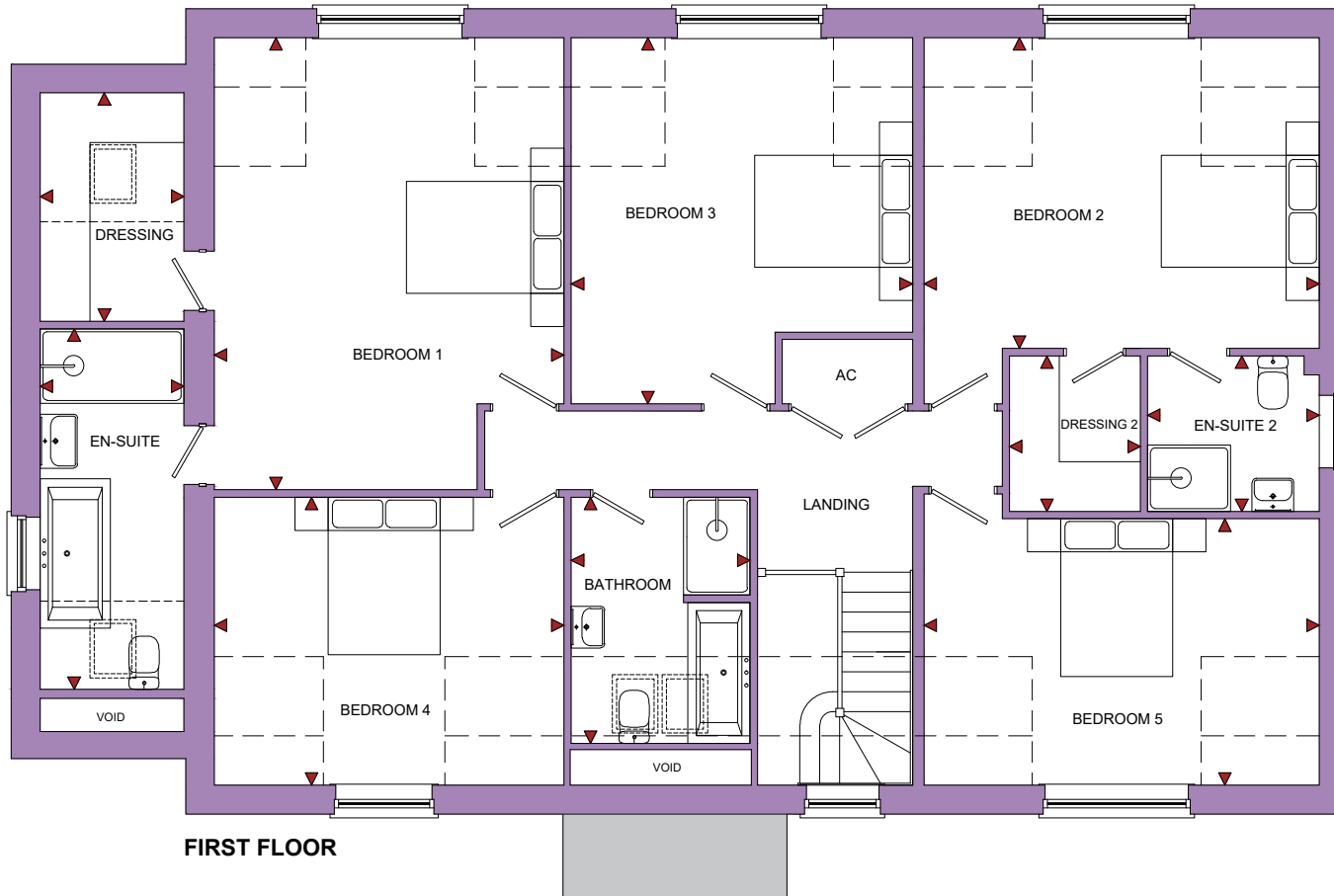
the name that stands for quality homes

No.8

5 Bedroom Detached Home

Privet Court

Gotherington, Gloucestershire, GL52 9QU



ROOM	IMPERIAL / "	METRIC / mm
Bedroom 1	13' 10" x 17' 11"	4212 x 5450mm
Bedroom 2	15' 8" x 12' 4"	4760 x 3747mm
Bedroom 3	13' 6" x 14' 6"	4110 x 4412mm
Bedroom 4	13' 10" x 11' 5"	4212 x 3472mm
Bedroom 5	15' 8" x 10' 7"	4760 x 3212mm
Bathroom	7' 1" x 9' 9"	2155 x 2968mm
En-Suite	5' 8" x 14' 3"	1735 x 4344mm
En-Suite 2	6' 10" x 6' 2"	2067 x 1875mm
Dressing	5' 8" x 9' 1"	1735 x 2756mm
Dressing 2	5' 2" x 6' 2"	1575 x 1875mm

TOTAL FLOOR AREA
2720ft² / 252.7m²

FIRST FLOOR

www.bellhomes.com

We strive to make each home and development as varied and interesting as possible. Therefore the above is for illustration purposes only and individual properties may vary. Please ask for details of specific properties. Every care has been taken with the preparation of this information, which has been produced for your guidance only and does not form part of a contract. The Plans are NOT TO SCALE, and may vary on site. Please do not use this information for purchase of furnishings and furniture.


bellhomes
the name that stands for quality homes