



The Malvern End

Three Bedroom Home

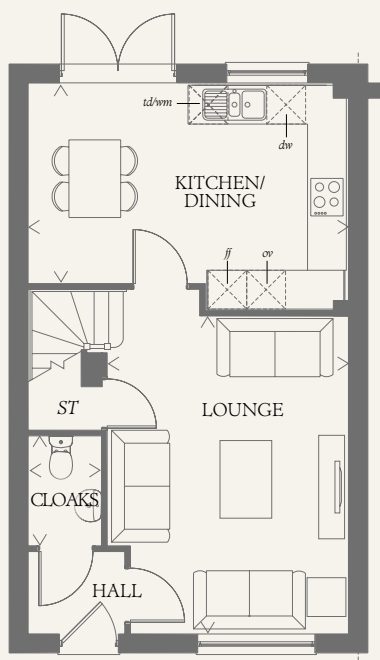




The Malvern End

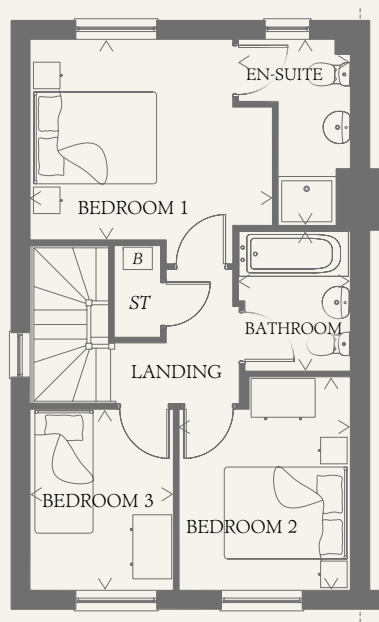
Three Bedroom Home

A substantial family home that is as dependable as it is solid, with elegant design making the most of the space available to provide ample room for family living, that makes living so much simpler.



GROUND FLOOR

| | | |
|--------------------|---------------|---------------|
| LOUNGE | 16'1" x 12'2" | 4.90 x 3.70 m |
| KITCHEN/ DINING | 16'1" x 10'1" | 4.90 x 3.08 m |
| CLOAKS | 5'7" x 3'8" | 1.70 x 1.11 m |



FIRST FLOOR

| | | |
|-----------|---------------|---------------|
| BEDROOM 1 | 12'2" x 10'1" | 3.72 x 3.08 m |
| EN-SUITE | 9'4" x 5'7" | 2.85 x 1.71 m |
| BEDROOM 2 | 10'9" x 8'7" | 3.28 x 2.62 m |
| BEDROOM 3 | 9'1" x 7'2" | 2.78 x 2.19 m |
| BATHROOM | 7'1" x 5'7" | 2.17 x 1.71 m |

CONSUMER CODE FOR HOME BUILDERS

www.consumercode.co.uk

Customers should note this illustration is an example of the Malvern End house type. All dimensions indicated are approximate and the furniture layout is for illustrative purposes only. Homes may be 'handed' (mirror image) versions of the illustrations, and may be detached, semi-detached or terraced. Materials used may differ from plot to plot including render and roof tile colours. Detailed plans and specifications are available for inspection for each plot at our Sales Centre during working hours and customers must check their individual specifications prior to making a reservation.

KEY

| | |
|---------------------------------|------------------------------|
| Hob | <i>td</i> Tumble dryer space |
| <i>ov</i> Oven | <i>ST</i> Cupboard |
| <i>ff</i> Fridge/freezer | <i>B</i> Boiler |
| <i>wm</i> Washing machine space | |
| <i>dw</i> Dishwasher space | |

< Denotes where dimensions are taken from. All wardrobes are subject to site specification. Please see Sales Consultant for further details.

THINK 209938_EF_MALV_EM.6.0 RV

