



at Shurland Park

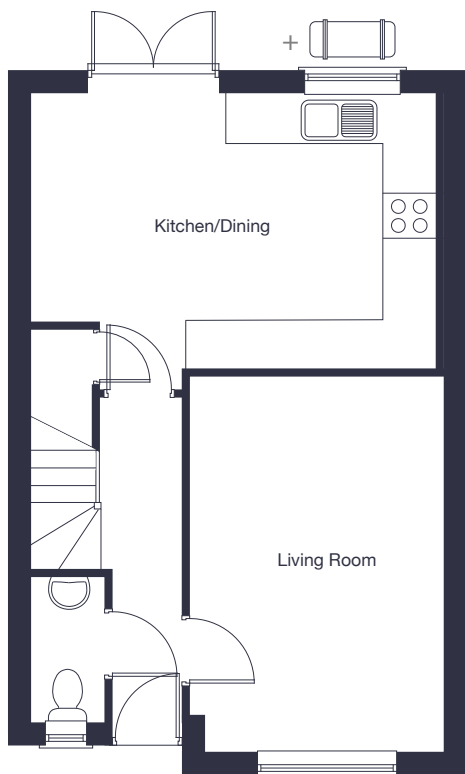
Plot 72  
**The Baycliffe**

3 bedroom  
detached home

[jones-homes.co.uk/shurland-park](https://jones-homes.co.uk/shurland-park)

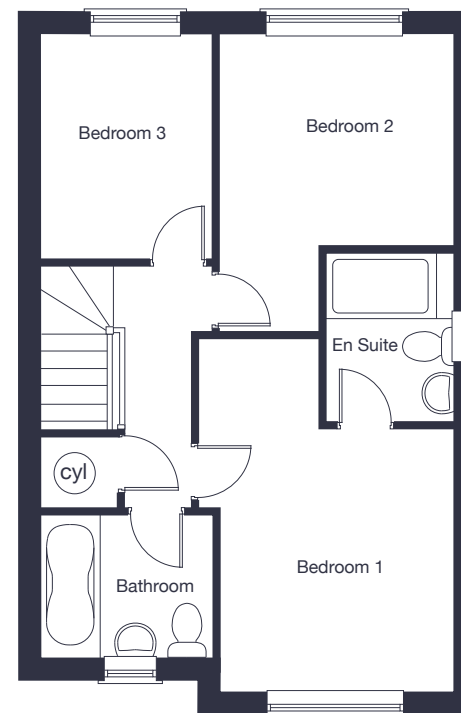
Built with you in mind





## Ground Floor

Kitchen/Dining	5.21m x 3.51m	17'1" x 11'6"
Living Room	4.84m x 3.20m	15'10" x 10'6"



## First Floor

Bedroom 1	4.54m* x 3.28m*	14'1"* x 10'9"*
Bedroom 2	3.87m* x 3.02m*	12'8"* x 9'11"*
Bedroom 3	2.91m x 2.15m	9'6" x 7'1"

\* Denotes maximum dimension.

+ Indicative position of external Air Source Heat Pump. Please ask our Sales Advisor for plot specific position.

Floor plans, CGI and image are for guidance and illustrative purposes only and do not form part of any contract. All room sizes are approximate to maximum dimensions and some plots may be subject to additional gable or bay windows. Please ask our Sales Advisor for details on specification and plot specific street scenes. Every effort has been taken to ensure these plans are as accurate as possible at time of printing. However, Jones Homes reserves the right to vary details as may be necessary and without notice. JHS12912/March 2025.