



VIOLET

4 BEDROOM HOUSE

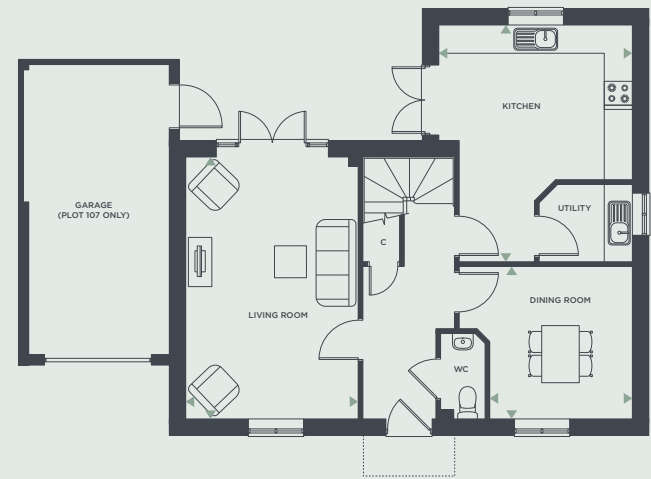
Plot Numbers
107 | 117

KEY — C: Cupboard | AC: Airing Cupboard | W: Wardrobe

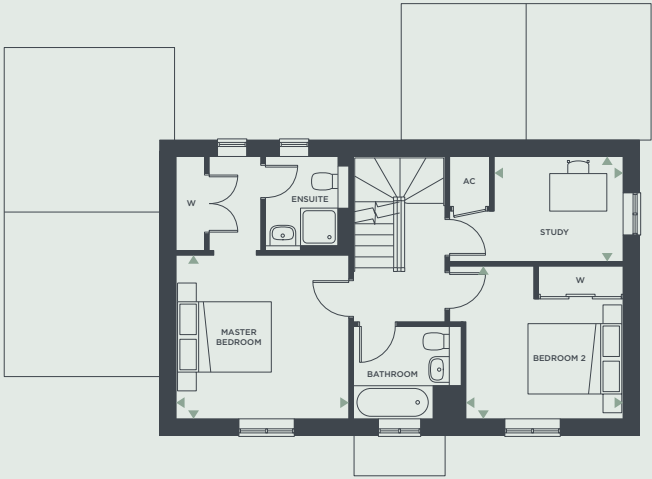
Floorplans are not to scale and are indicative only. Location of windows, doors, bathroom fittings, kitchen units and appliances may differ. Dimensions given are approximate and should not be used to order carpets or furniture. Balcony and terrace sizes and locations may differ from those illustrated.

DIMENSIONS

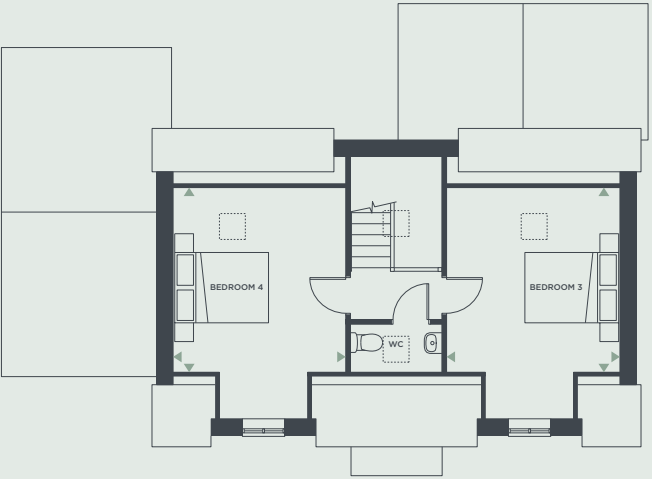
Kitchen	4.17m x 5.09m	13'8" x 16'8"
Dining Room	3.08m x 3.29m	10'1" x 10'10"
Living Room	3.71m x 5.63m	12'2" x 18'6"
Master Bedroom	3.71m x 3.52m	12'2" x 11'7"
Bedroom 2	3.39m x 3.29m	11'1" x 10'10"
Bedroom 3	3.73m x 3.96m	12'2" x 13'0"
Bedroom 4	3.72m x 3.96m	12'2" x 13'0"
Study	2.78m x 2.27m	9'2" x 7'6"
Net internal area	160.93 sq m	1732.24 sq ft



Ground Floor



First Floor



Second Floor

BROOKFIELDS

BROOKFIELDS, STANE STREET, PULBOROUGH, WEST SUSSEX, RH20 | 01798 849 302 | BROOKFIELDS-PULBOROUGH.CO.UK

BROOKFIELDS
PULBOROUGH, WEST SUSSEX

VIOLET 4 BEDROOM HOUSE

Plot Numbers
107 | 117



Map is indicative only and not to scale.