

THE JAYWICK

PLOTS 17, 25, 26, 27 & 28



- 4 Bedroom Home
- Large Open Plan Kitchen / Dining
- Separate Sitting Room
- Spacious Study
- Downstairs W/C
- Family Bathroom
- En-suite to Bedroom 1
- Built-in Wardrobes to Bedroom 1
- Single Garage & Off-Road Parking
- Energy Efficient Materials Throughout

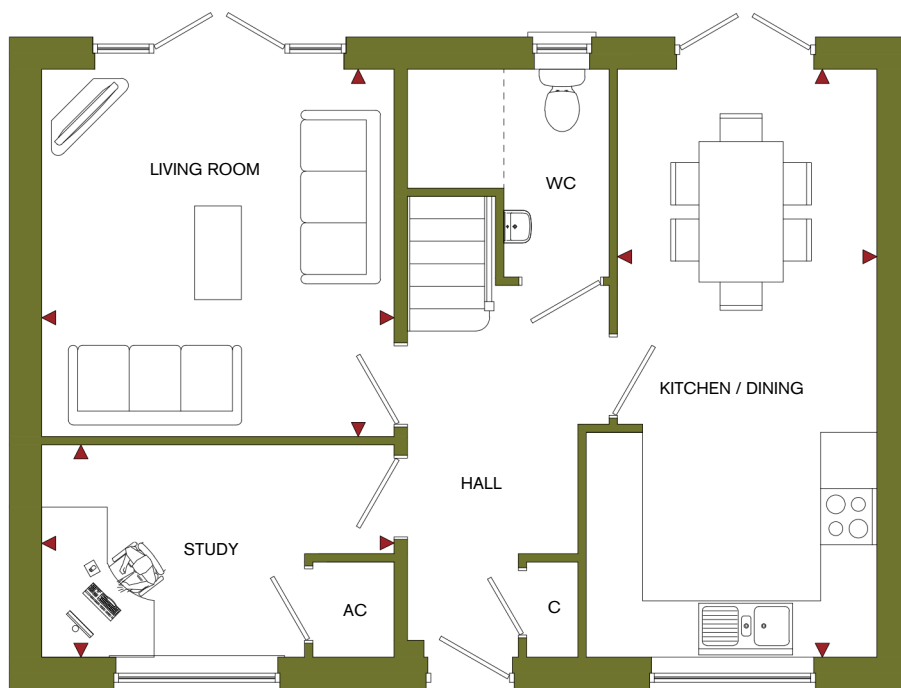


THE JAYWICK

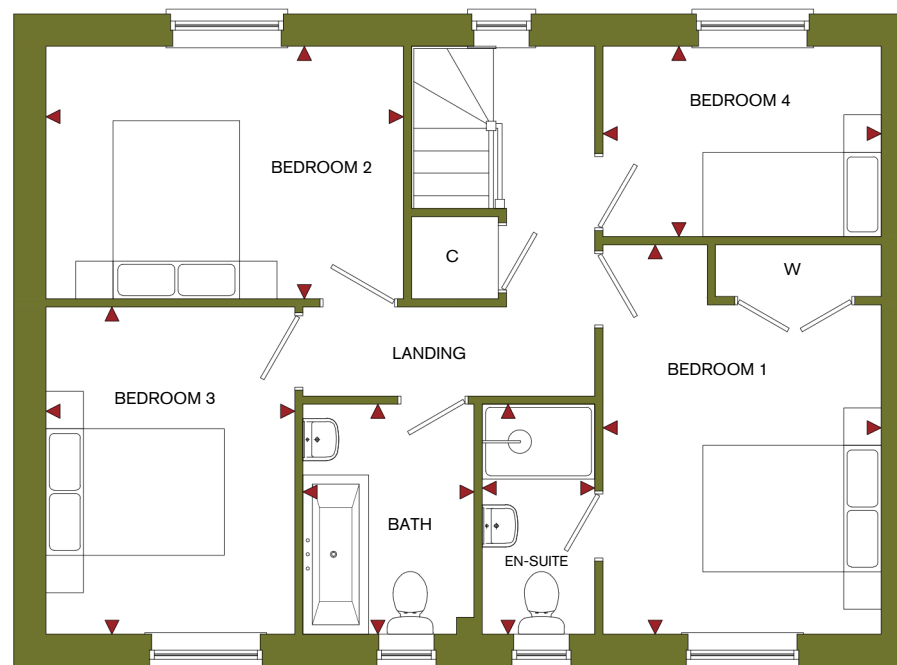
FLOOR PLAN

ROOM	IMPERIAL / "	METRIC / mm
Living Room	12' 4" x 12' 10"	3760 x 3920mm
Kitchen / Dining	9' 1" x 20' 7"	2768 x 6275mm
Study	12' 4" x 7' 5"	3753 x 2268mm

ROOM	IMPERIAL / "	METRIC / mm
Bedroom 1	9' 9" x 13' 8"	2967 x 4156mm
Bedroom 2	12' 6" x 8' 10"	3812 x 2694mm
Bedroom 3	8' 9" x 11' 6"	2654 x 3493mm
Bedroom 4	9' 9" x 6' 8"	2968 x 2032mm
Bathroom	6' 0" x 8' 1"	1825 x 2455mm
En-Suite	3' 11" x 8' 1"	1200 x 2455mm



GROUND FLOOR



FIRST FLOOR

TOTAL FLOOR AREA
1204ft² / 111.8m²