

The Verdean

Shared Ownership *Collection*

A vibrant collection of 1 & 2-bedroom
apartments in Acton W3.



Here everything connects

Situated in one of London's greenest boroughs, with some of the city's best connected travel links. The Verdean offers residents a truly unique opportunity.

Become a part of the growing social scene within Acton, The Verdean is home to the lifestyle you've always wanted.

Stylish 1 & 2-bedroom Shared Ownership homes with a host of spectacular amenities await.

The promise of a prosperous future lies ahead of you...



Green spaces designed in conjunction with The Royal Botanic Gardens, Kew

Change *in motion*

Acton is currently home to the most exciting and ambitious regeneration project in the UK. A £26 billion, 1,600-acre masterplan is transforming the area with the aim to give Acton a brand new identity as a cosmopolitan corner of London.

The result will be a great new place for Londoners to live, work and play. The development has been created alongside the residents with their needs in mind.

The Verdean is home to a proud, thriving and diverse community that adds something special to the regeneration project and the area, making it a postcode to be proud of.

Furthermore, there are 7 stations within walking distance, including the Elizabeth Line on your doorstep, giving you convenient connections into the heart of the city.





Canary Wharf 23 min

City of London

Bond Street 9 min

Paddington 6 min

Notting Hill

Hyde Park

Knightsbridge

Kensington

White City

Chelsea

Earls Court

Fulham

River Thames

Hammersmith

Chiswick

East Acton 17 min

Acton Park

£26bn

One of London's largest regeneration projects is underway just north of The Verdean, worth £26 billion.

The Verdean
London W3



North Acton 12 min

Acton Central 10 min

Churchfield Road

Acton Main line <1 min

North Acton Playing Fields



Become part of *something special*

More than just a place to live, this vibrant new development has been masterfully designed and sits proudly amongst the regeneration taking place in West London.

Plus, Shared Ownership offers you the opportunity to get onto the property ladder and invest in this growing and thriving area.

Covering nearly six acres, with over a third beautifully blanketed in luscious green landscaping, The Verdean welcomes you with open arms.



At the beating heart is community



LaTonya & Daniel – Ackee and Salt Fish



Nergiz making Dolma

Scan for cookbook



A neighbourhood that looks out for one another is one that will last. We've seen that first-hand through The Felix Project, a commercial and community-run initiative that provides regular access to affordable and local food by volunteers to people in need. As well as handing out over 2,000 parcels annually, the project also hosts exciting foodie projects.

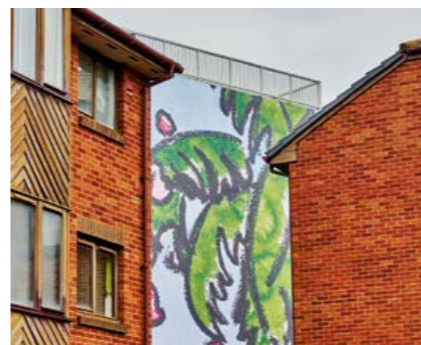
At the heart of every happy home is a busy kitchen – a space where loved ones can gather and enjoy their home-cooked favourites. One of our favourite projects is our very own cookbook where residents have shared recipes that make them feel at home. Not only does it provide the perfect opportunity to connect with neighbours through the unifying power of good food, residents can take away all kinds of recipes, gathered from the diverse array of people living at The Verdean.

Community is at the heart of The Verdean, so we make sure we celebrate it wherever we can.

The Verdean is home to a strong, active community that understands what it means to truly feel at home. We're always looking at ways to unite and engage with our residents and make sure that they feel like this is somewhere that they belong.



Nergiz making Dolma



Community elected mural



Huda making Kubba Haleb



Huda making Kubba Haleb

Our community centre is a real hub for our residents, offering a shared space for meetings, events, and charitable initiatives.

In response to community feedback, we've introduced new features to enhance facilities and demonstrate our commitment to reinvesting in local groups and initiatives, ensuring long-term benefits for the entire community.



Here your future *grows*



Immerse yourself in nature

Our ethos is eco.

The importance of green, outdoor space has long been heralded, the positive impacts it has on your health and wellbeing are numerous. That's why nature is at the very heart of The Verdean, over a third of the total development will be landscaped green space, offering residents fresh air and a haven from the hustle and bustle of city life.

The development's green spaces have been designed in conjunction with the world famous Royal Botanic Gardens, Kew to create areas that will wow and inspire.

The development also includes a community garden*. This is a space for sustainably-minded, green-fingered residents to grow their own vegetables and herbs to bring mealtimes to life.

Royal Botanic Gardens
Kew





A home that
means more

A 'you-first' lifestyle *all day*

7.30am

Start your day right by moving your body in the residents' gym and cycle hub powered by Peloton*



Computer generated image indicative only.



Computer generated image indicative only.

9am

Work from home in the Business Lounge*



1pm

Take a break from your laptop and grab a delicious lunch from By Max, the on-site coffee shop



Computer generated image indicative only.

5.30pm

Time for some well earned fresh air, catch some rays on the landscaped gardens at the heart of the development. These have been designed in conjunction with The Royal Botanic Gardens, Kew

The Verdean offers truly unrivalled amenities available with Shared Ownership, with the option to opt-in or opt-out.

8.30pm

After dinner meet some friends in the multi-purpose entertainment space and catch a film in the screening room*



Computer generated image indicative only.



Be in your *element*

This is Acton.

In the search for a new home, proximity to amenities becomes more than just a checklist, it's the heartbeat of a community and the pulse of belonging.

Imagine strolling to your local park, the vibrant hum of activity in the air, or popping into the corner cafe where you can pick up your choice coffee from your favourite barista who knows you by name.

At The Verdean, you can enjoy a village feeling in the heart of the city. Plus, you can venture further afield to new adventures just a train ride away. It's not just about finding a place to live; it's about finding your place in the world, where every step feels like coming home.

01 / By Max

02 / David Lloyd Acton Park

03 / Putt in the Park Acton

04 / The Station House

05 / The Oaks Shopping Centre

06 / Sabiib Somali Restaurant Acton

07 / No drama.

08 / Malieu Cafe

09 / The Private Spa

10 / Grand Junction Arms

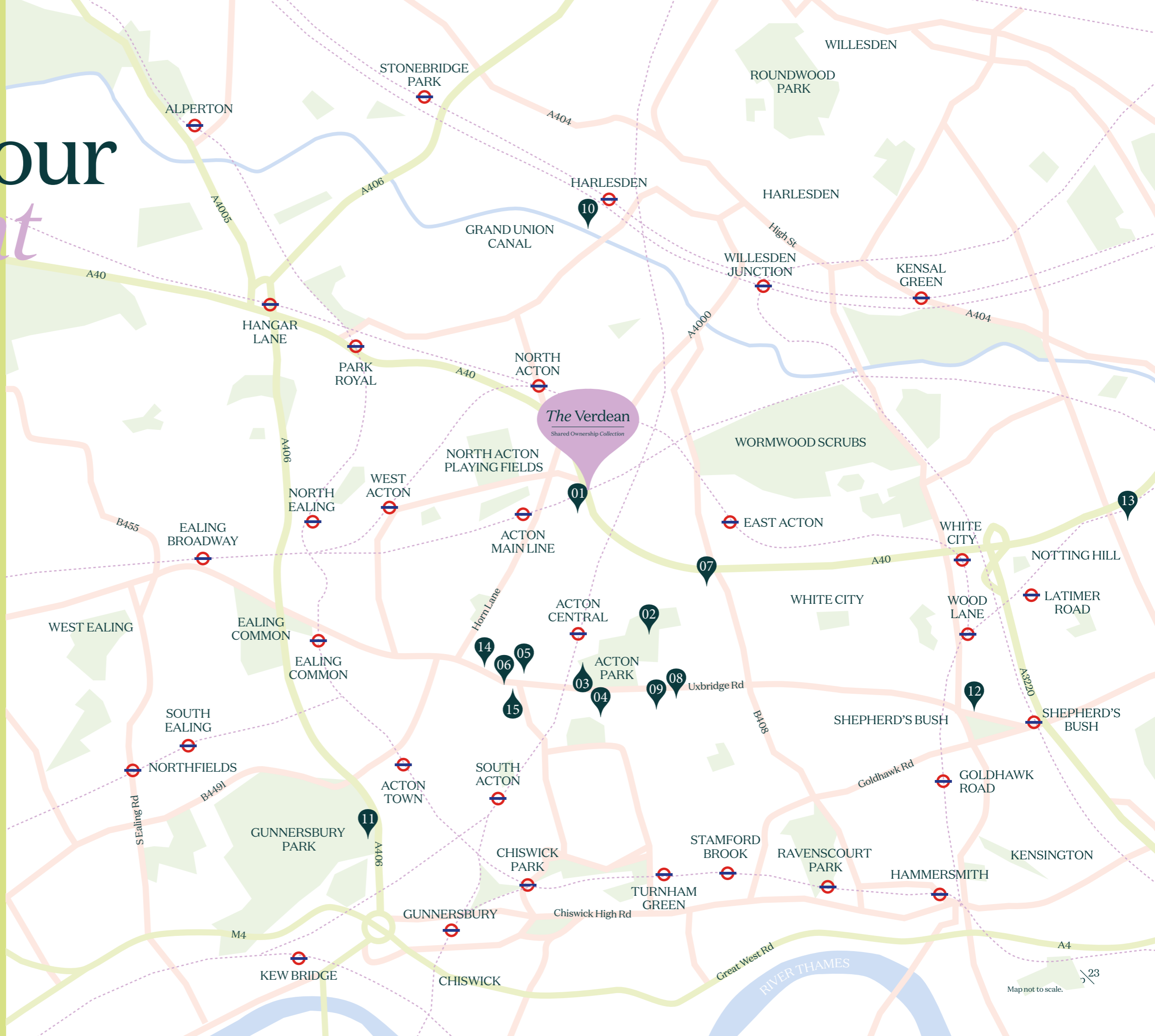
11 / Gunnersbury Community Garden

12 / Westfield London

13 / Portobello Road Market

14 / Acton Market

15 / Act One Cinema



Experience the flavourful lifestyle of Acton at The Verdean. Indulge in mouthwatering bites at *no drama.*, coined 'the home of London's new best burger', just an 18-minute walk from your new home. For a slower start, wander to *By Max*, our on-site coffee shop and deli, and enjoy Italian coffee, pastries and sandwiches by day, and wine, cheese and cocktails by night.

Take a leisurely stroll through Gunnersbury Park, immersing yourself in nature's tranquillity, while sampling on treats from seasonal pop-up stalls and food trucks. Head down to the buzzing Churchfield Road for the evening where The Station House awaits. Offering an inviting atmosphere accompanied by delicious food and drinks, this will inevitably become your favourite local.

Whether you're exploring new cuisines, dining at charming eateries or enjoying the lively pubs, Acton's food scene has something for every taste. The Verdean offers a lifestyle that seamlessly blends convenience and indulgence, making every day an experience to savour.



no drama.

18 minutes

Step into *no drama.*, where delicious delights await to tantalise your taste buds. In this cosy diner you can savour each bite in the welcoming atmosphere. Plus, it's endorsed by none other than Ed Sheeran.



Shared Ownership Collection

By Max

2 minutes

Just a short stroll down the road you can enjoy 'the best coffee in Acton' in the morning as well as drinks and live music in the evenings. A fantastic way to start and end the day.

Culinary adventures in a town worth living in

Gunnersbury Park & Museum

15 minute cycle

Explore more than 185 acres of sprawling parkland and immerse yourself in interactive museum experiences. Indulge in a variety of pop-up eateries offering your favourite treats. Everything you need for a memorable day out awaits.



Acton Market

16 minutes

Just a short walk away, this vibrant and colourful fusion of cultures is a community run project, home to many enthusiastic traders offering some of the best street food and crafts in West London.

The Station House

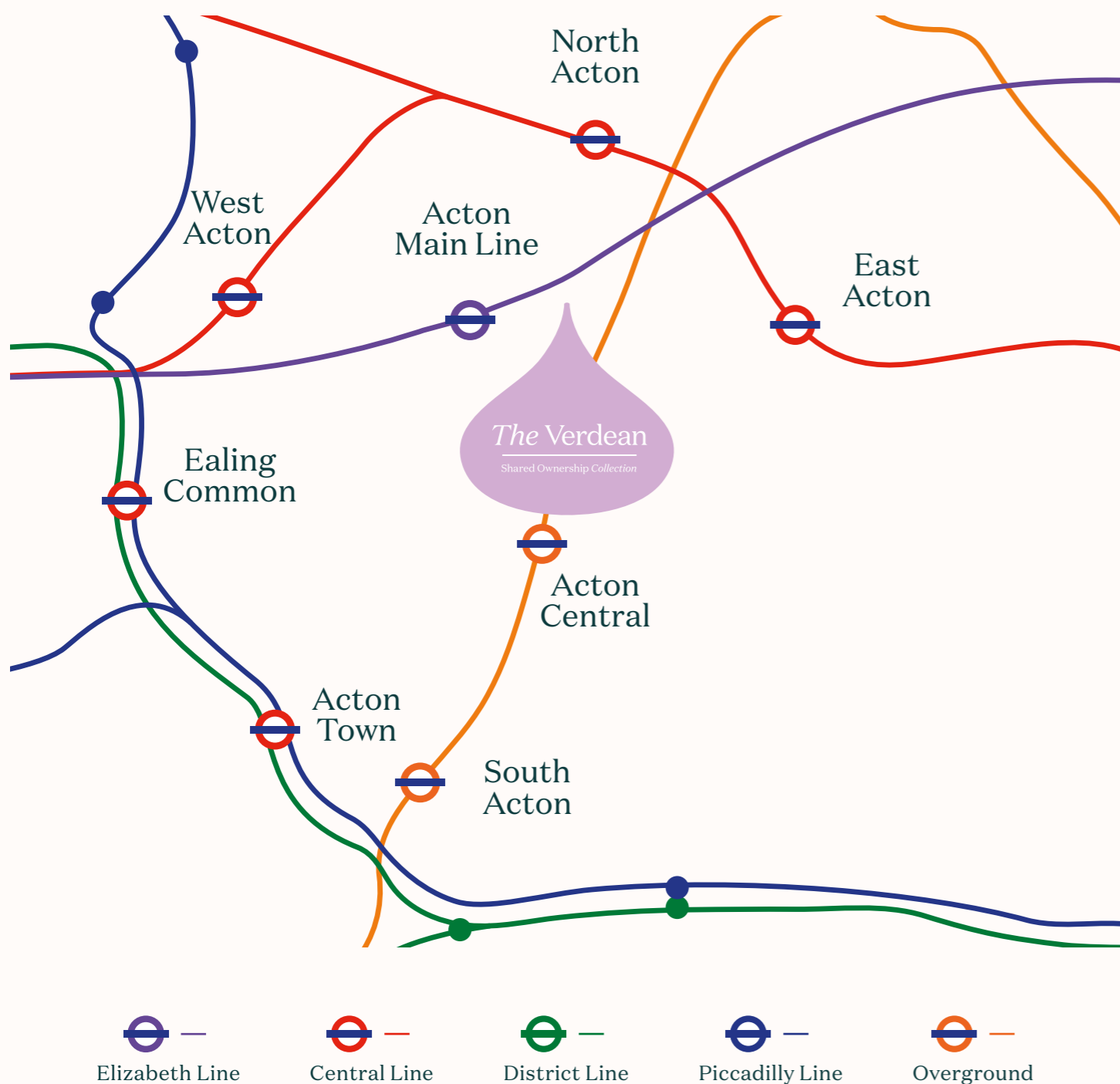
14 minutes

Eat, drink and be merry at *The Station House*. The ground floor bar is a popular spot for a casual Friday night drink, where you can also enjoy wood fired pizzas and Italian small plates.


In summer, their beer garden is always lively and in winter the pub is a cosy den with a real fire to snuggle up to. Your local never felt so good.



The city *awaits...*




Acton Main Line

-  5 minutes
- Paddington 6 mins
- Canary Wharf 26 mins
- Heathrow 21 mins

Acton Central

-  15 minutes
- Kew Gardens 8 mins
- Highbury & Islington 31 mins


North Acton

-  10 minutes
- White City 4 mins
- Notting Hill Gate 11 mins
- Oxford Circus 19 mins


East Acton

-  23 minutes
- Marble Arch 14 mins
- Bank 26 mins


West Acton

-  25 minutes
- Ealing Broadway 3 mins

Acton Town

-  8 minutes
- South Kensington 14 mins
- Knightsbridge 16 mins
- Westminster 26 mins
- Leicester Square 24 mins

Ealing Common

-  9 minutes
- Uxbridge 32 mins

South Acton

-  9 minutes
- Richmond 10 mins

Acton is known for its convenient transportation with 7 stations within walking distance to The Verdean; providing direct access to key destinations across London and beyond. Whether you're heading to central London for some retail therapy, around Liverpool Street for a buzzy night out, or off to Heathrow for your holidays, you will benefit from seamless connections. With The Verdean's proximity to major railways and bus routes, navigating the capital becomes effortless.



The Elizabeth Line has become the best way to travel across London, modern trains with air conditioning have set a new standard for travel in the capital. The Verdean benefits from close proximity to Acton Main Line station, a stop on the Elizabeth Line which residents can use to visit Central London with ease.



Canary Wharf

28 minutes

The iconic part of London's skyline is just a short ride on the Elizabeth Line. Explore over 300 shops, cafés, bars and restaurants, including one of London's biggest roof gardens.



London Liverpool Street

22 minutes

A swift journey into the City of London, with its glass skyscrapers and hidden history, offering endless opportunities for work, exploration and adventure.

Where Connectivity Meets Convenience

The Elizabeth Line has redefined London travel



Bond Street

14 minutes

For the very best shopping in London, stroll through Bond Street, where luxury brands and high street names compete for shoppers' attention.

Heathrow Airport

21 minutes

When the weather turns cold and you're in need of some guaranteed sunshine, Heathrow Airport and its many onward destinations are just a few stops away.

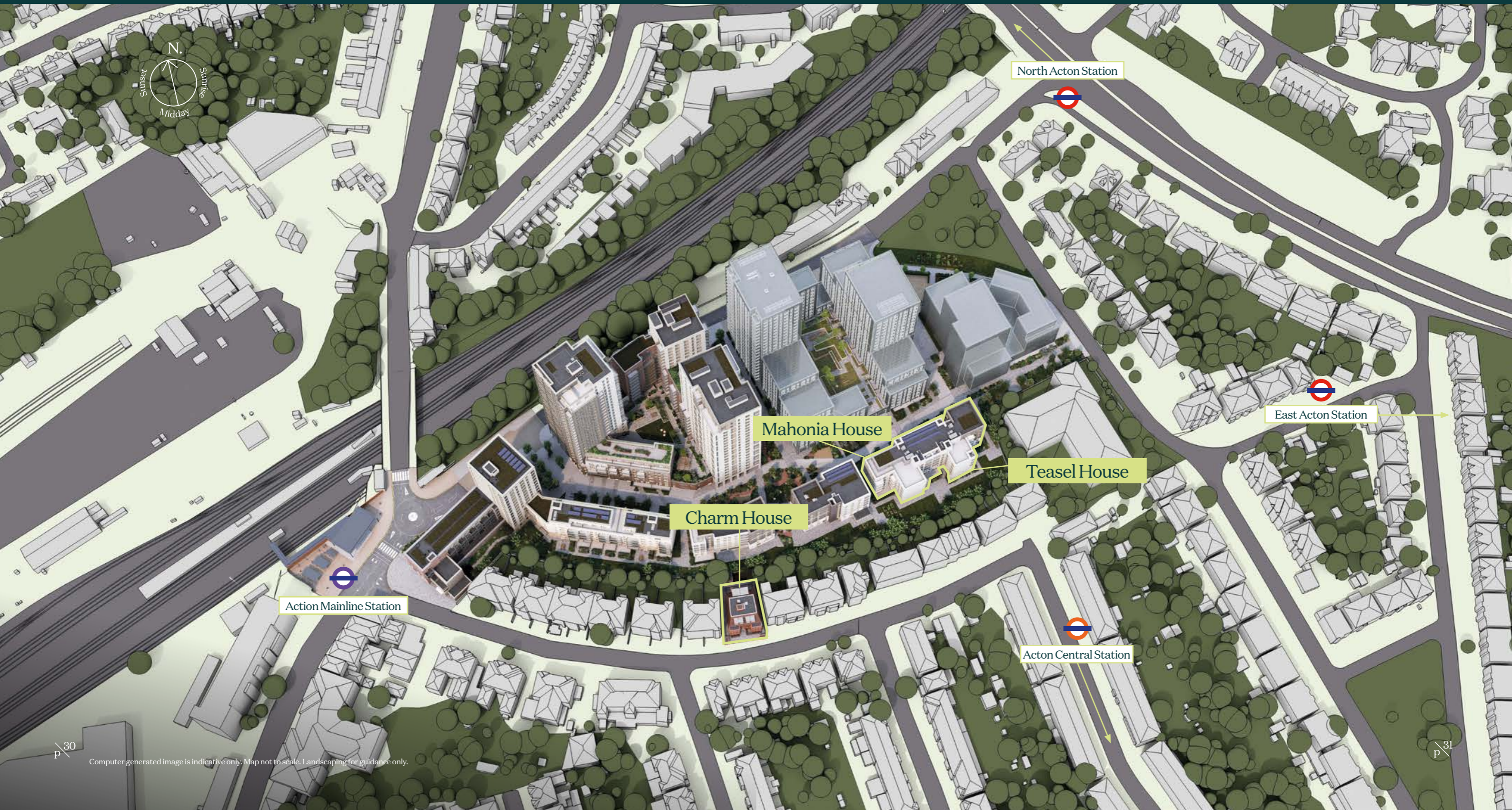


Sitemap

An ambitious project that is already bringing exceptional new homes to Acton. The Verdean is a joint venture between Peabody and Mount Anvil.

The development itself comprises a number of apartment blocks with quality homes and innovative designs surrounded by beautiful landscaped gardens.

Green space is key to the design, as can be seen by the many open and natural spaces that span the development, bringing the community together.





Specification

General

- Front entrance door with matte black lever handle
- Amtico flooring with Powdered Oak Finish to hallways, kitchen, living and dining areas
- White matte emulsion finish to walls
- White timber internal doors
- Warm white downlights throughout
- Freestanding Hotpoint washer/dryer
- Labetts shading roller blinds

Kitchen

- Dark brown Eucalyptus handleless base units with white accent wall units
- 20mm laminate marble effect worktop and upstand with glass splashback
- 1.5 bowl inset stainless steel sink and mixer tap with chrome finish
- LED lights to underside of wall units
- Bosch built-in single oven
- Bosch integrated electric induction hob with cooker hood
- Bosch integrated fridge/freezer
- Bosch integrated dishwasher

Bathroom /En-suite

- Large dark Minoli floor tiles
- Large Minoli wall tiles (dark colour to bottom half, light colour to top half)
- Ceramic wall-hung WC with slow-close seat
- Ceramic semi-recessed wash basin
- White bath with built-in bath/shower mixer and bath screen
- Evo Jet shower kit
- Walk-in shower with concealed mixer valve and rain Evo shower kit to En-suites
- Commonfield half-mirrored wall cabinet
- Chrome stainless steel heated towel rail with full thermostat control

Bedroom

- Cormar Hampstead twist carpet
- Floor to ceiling fitted timber wardrobes to Bedroom 1





Comfort

Computer generated image is indicative only.

The new apartments at The Verdean have been crafted to meet the demands of modern city living. We understand the need for versatile spaces, therefore we have curated a variety of different layouts that strike the perfect balance between a relaxing retreat and a place to entertain

We also understand the importance of safety, security and comfort – all of which have been guiding principles behind the design of this exceptional collection of new homes.

The utmost care and attention has been taken to compile a design, along with a specification that will create a place that you are proud to call home

meets style



Computer generated image is indicative only.



Computer generated image is indicative only. Details of the internal specification and finish are subject to change and this is provided as a guide only.



Find your *dream home*

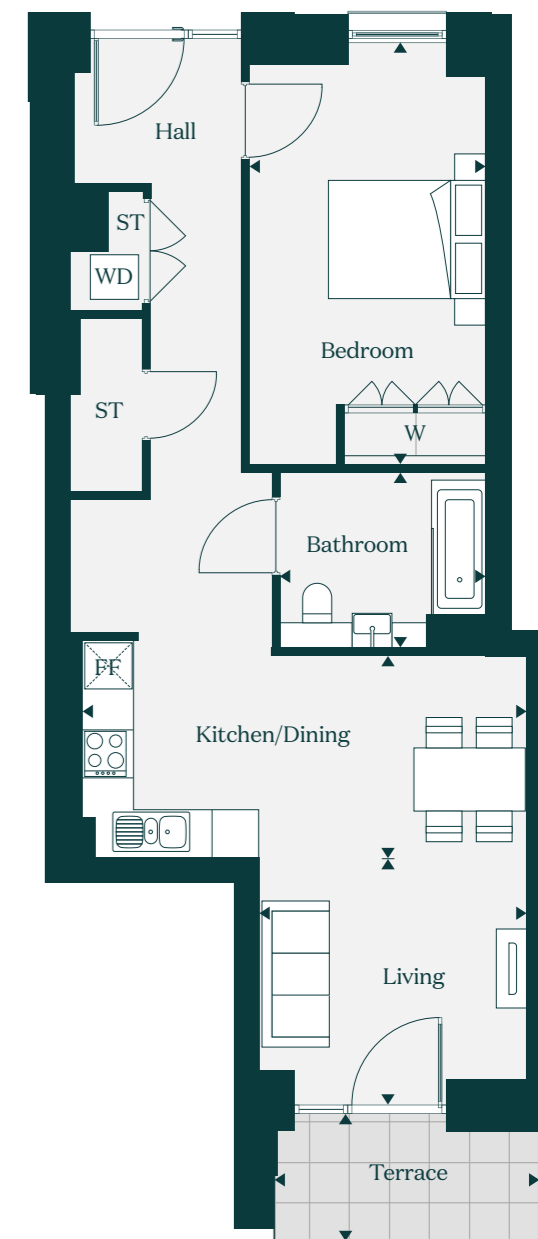


1 bedroom apartments

The Redwood

Teasel House

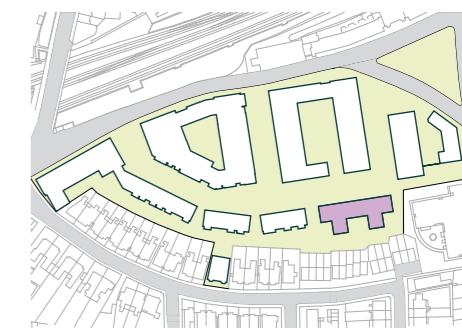
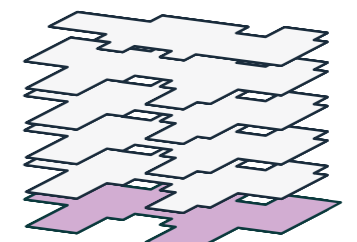
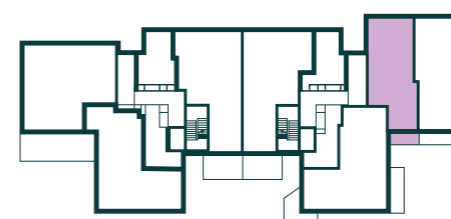
Apartment /10



Living	3.4m x 3.1m		11'1" x 10'3"
Kitchen / Dining	5.7m x 2.5m		19'0" x 8'4"
Bedroom	5.3m x 3.0m		17'6" x 9'9"
Bathroom	2.6m x 2.2m		8'5" x 7'2"
Terrace	5.0 sq m		54 sq ft

Gross Internal Floor Area	65.5 sq m		705 sq ft
Gross External & Internal Area	70.5 sq m		759 sq ft

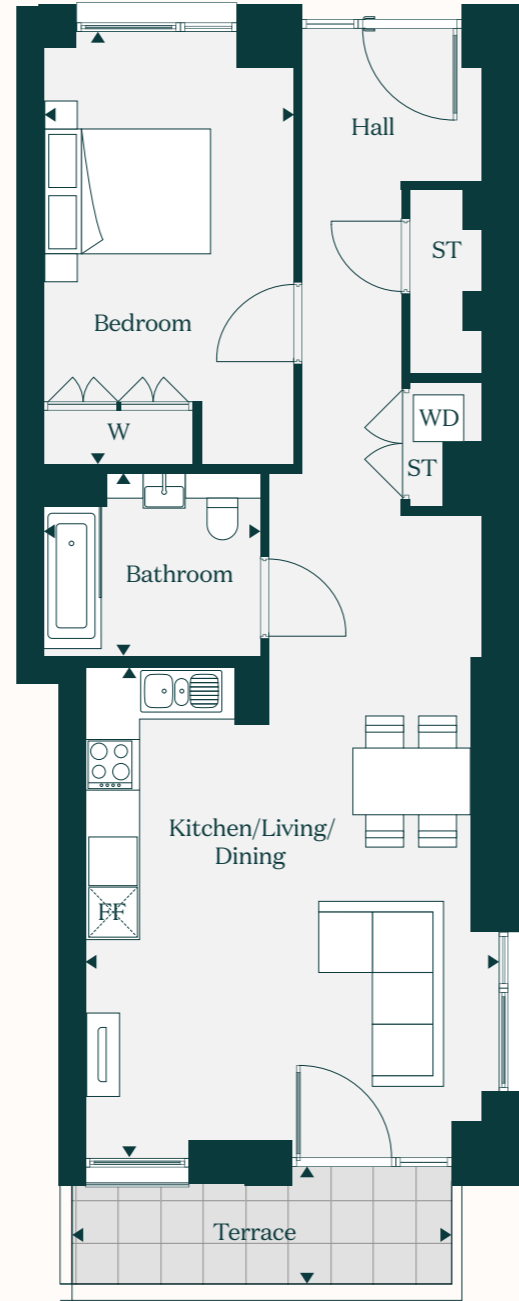
FF - Fridge Freezer ST - Storage W - Wardrobe WD - Washer Dryer



Floorplans shown are indicative only. The kitchen layout and furniture positions are for indicative purposes only. All dimensions indicated are approximate and should not be relied upon for carpet sizes or items of furniture. Peabody reserves the right to make changes to these plans prior to exchange of contracts. For exact plot specification, details of external and internal finishes, dimensions and floorplan differences, please speak to a Sales Executive for more details.

The Bamboo

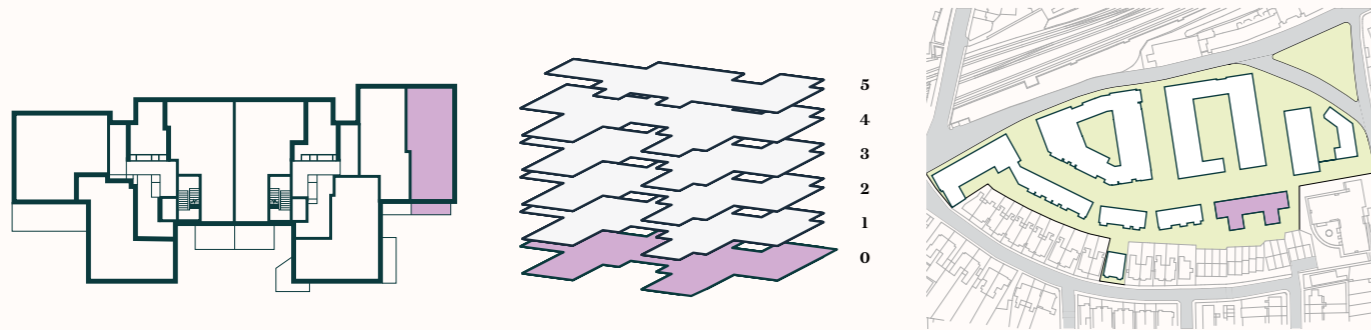
Teasel House
Apartment / 11



Kitchen / Living / Dining	5.9m x 4.9m	19'4" x 16'1"
Bedroom	5.1m x 3.0m	16'9" x 9'9"
Bathroom	2.6m x 2.2m	8'5" x 7'2"
Terrace	7.1 sq m	77.4 sq ft

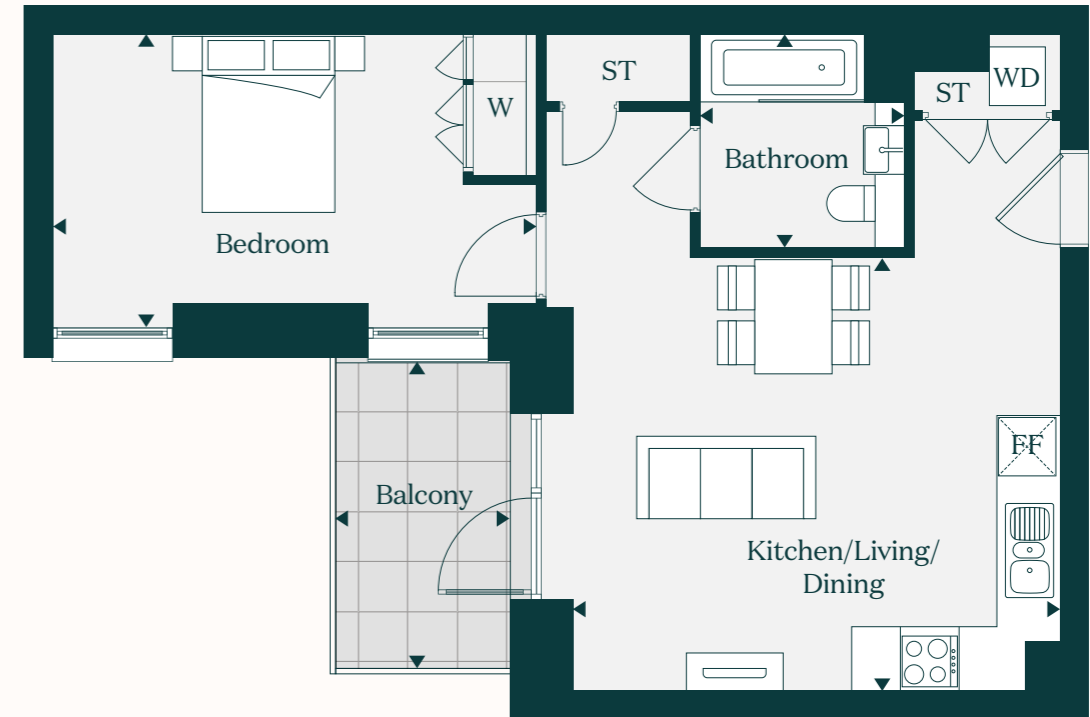
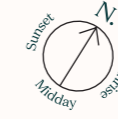
Gross Internal Floor Area	67.3 sq m	725 sq ft
Gross External & Internal Area	74.5 sq m	802 sq ft

FF - Fridge Freezer ST - Storage W - Wardrobe WD - Washer Dryer



The Ginkgo

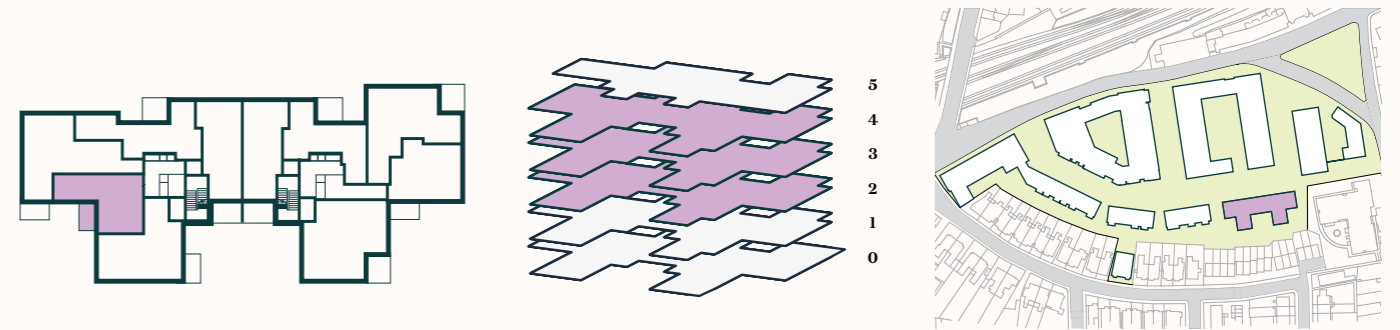
Mahonia House
Apartment / 45, 50, 55



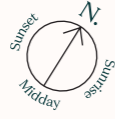
Kitchen / Living / Dining	5.3m x 4.4m	17'4" x 14'7"
Bedroom	5.0m x 3.0m	16'5" x 10'0"
Bathroom	2.2m x 2.1m	7'2" x 6'9"
Balcony	6.1 sq m	66 sq ft

Gross Internal Floor Area	50.7 sq m	546 sq ft
Gross External & Internal Area	56.8 sq m	611 sq ft

FF - Fridge Freezer ST - Storage W - Wardrobe WD - Washer Dryer

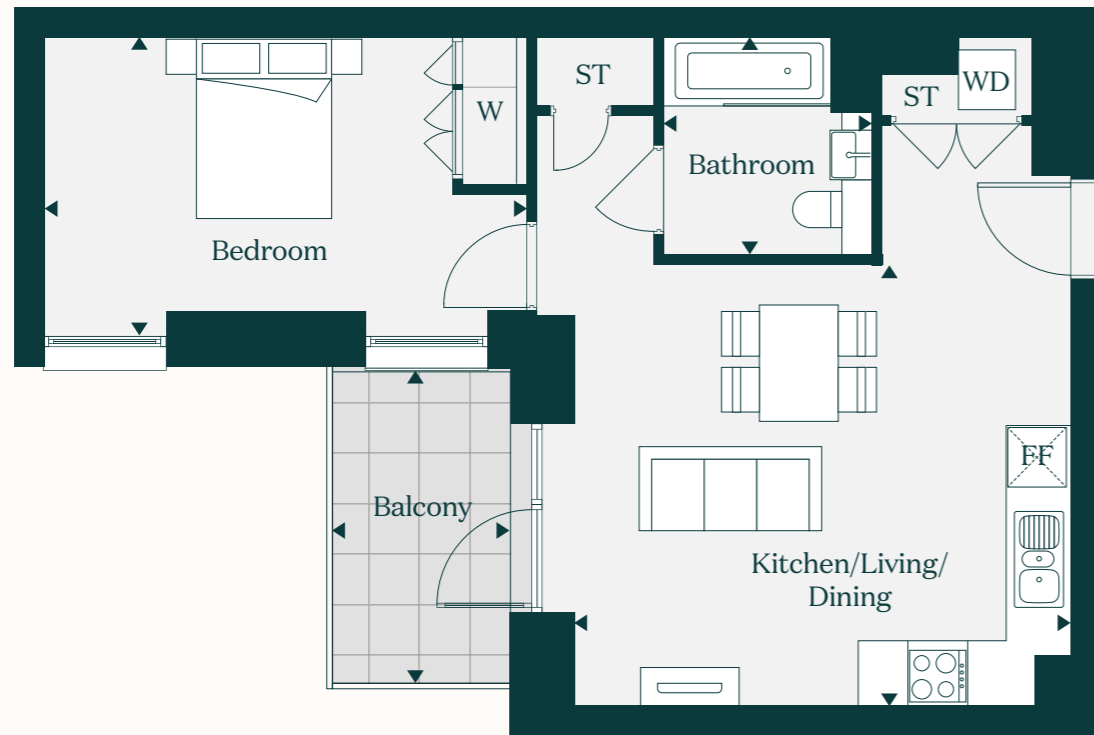


The Hornbeam



Mahonia House

Apartment / 40



Kitchen / Living / Dining 5.1m x 4.4m | 17'0" x 14'7"

Bedroom 4.9m x 3.0m | 16'1" x 9'8"

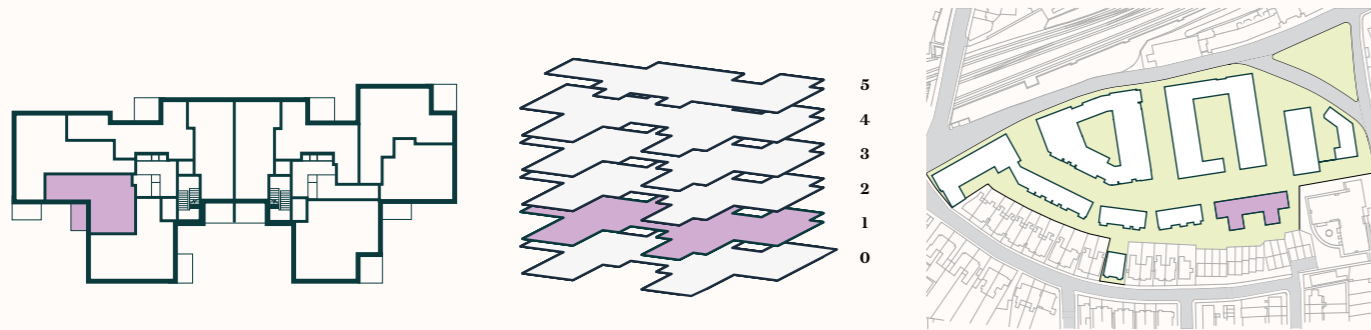
Bathroom 2.1m x 2.1m | 7'2" x 6'9"

Balcony 6.1 sq m | 66 sq ft

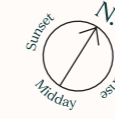
Gross Internal Floor Area 50.1 sq m | 540 sq ft

Gross External & Internal Area 56.2 sq m | 605 sq ft

FF - Fridge Freezer ST - Storage W - Wardrobe WD - Washer Dryer

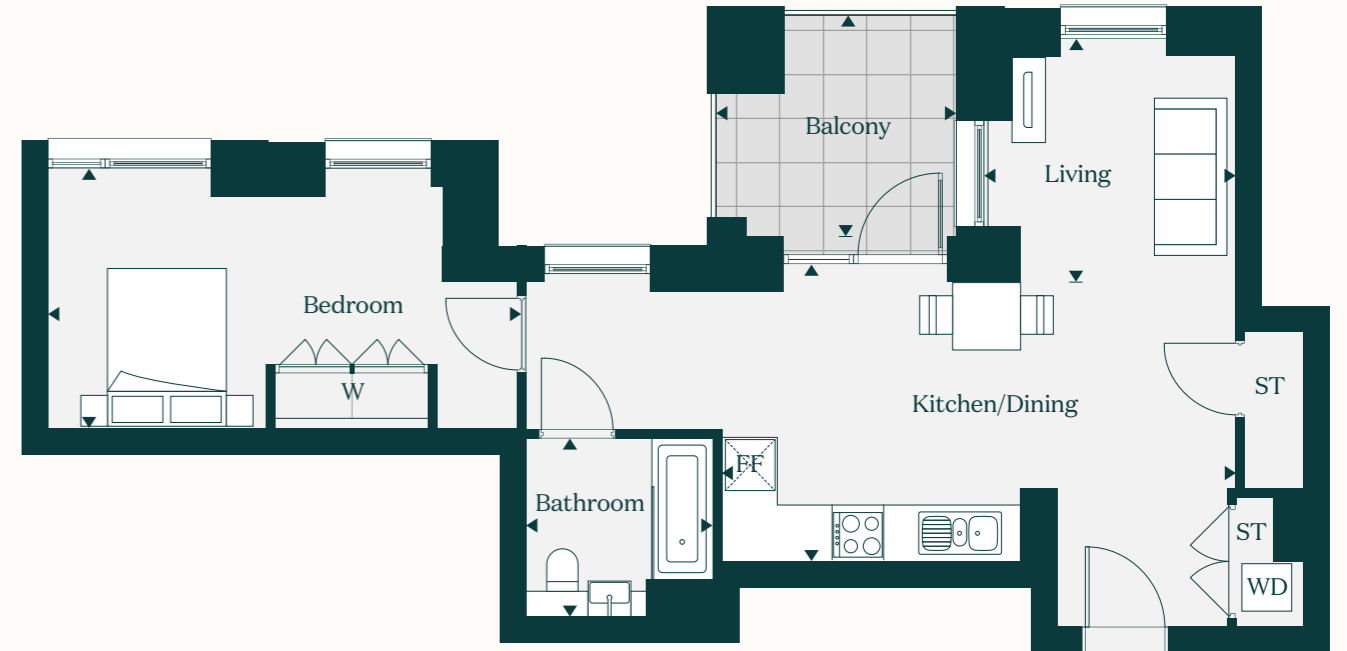


The Maple



Mahonia House

Apartment / 42, 47, 52, 57



Living 3.0m x 2.8m | 10'1" x 9'4"

Kitchen / Dining 6.0m x 3.5m | 19'9" x 11'5"

Bedroom 5.5m x 3.0m | 18'2" x 10'0"

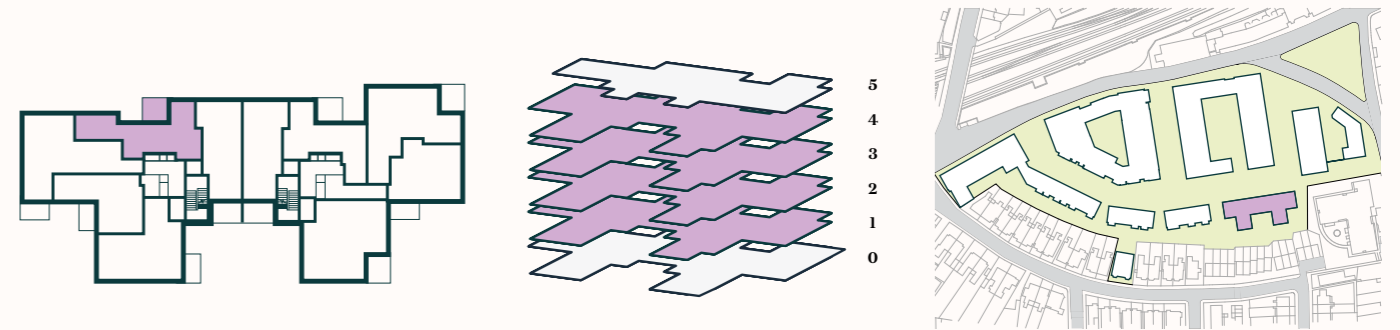
Bathroom 2.1m x 2.1m | 7'2" x 6'9"

Balcony 7.0 sq m | 76 sq ft

Gross Internal Floor Area 57.0 sq m | 613.5 sq ft

Gross External & Internal Area 64.0 sq m | 688 sq ft

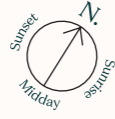
FF - Fridge Freezer ST - Storage W - Wardrobe WD - Washer Dryer



The Cherry

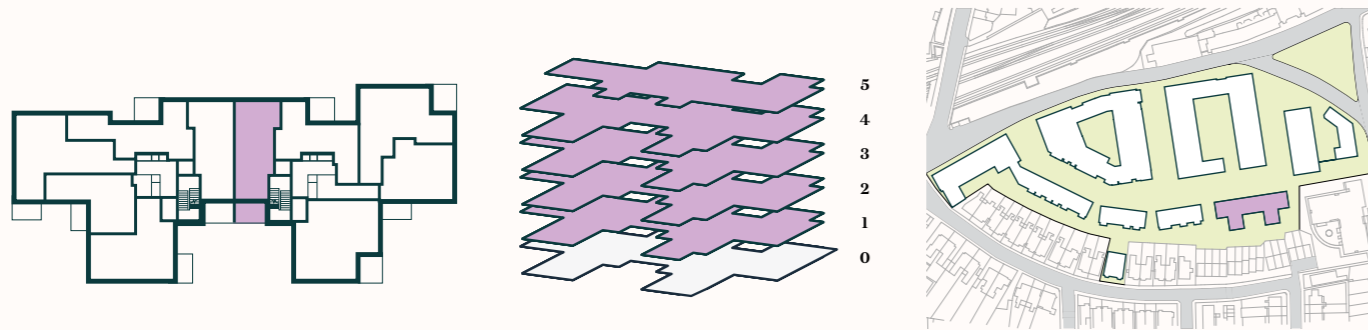
Teasel House

Apartment / 13, 18, 23, 28, 33



Kitchen / Living / Dining	6.2m x 4.4m		20'6" x 14'6"
Bedroom	5.1m x 3.1m		17'0" x 10'3"
Bathroom	2.2m x 2.1m		7'2" x 6'9"
Terrace	7.9 sq m		86 sq ft
<hr/>			
Gross Internal Floor Area	52.4 sq m		565 sq ft
Gross External & Internal Area	60.4 sq m		651 sq ft

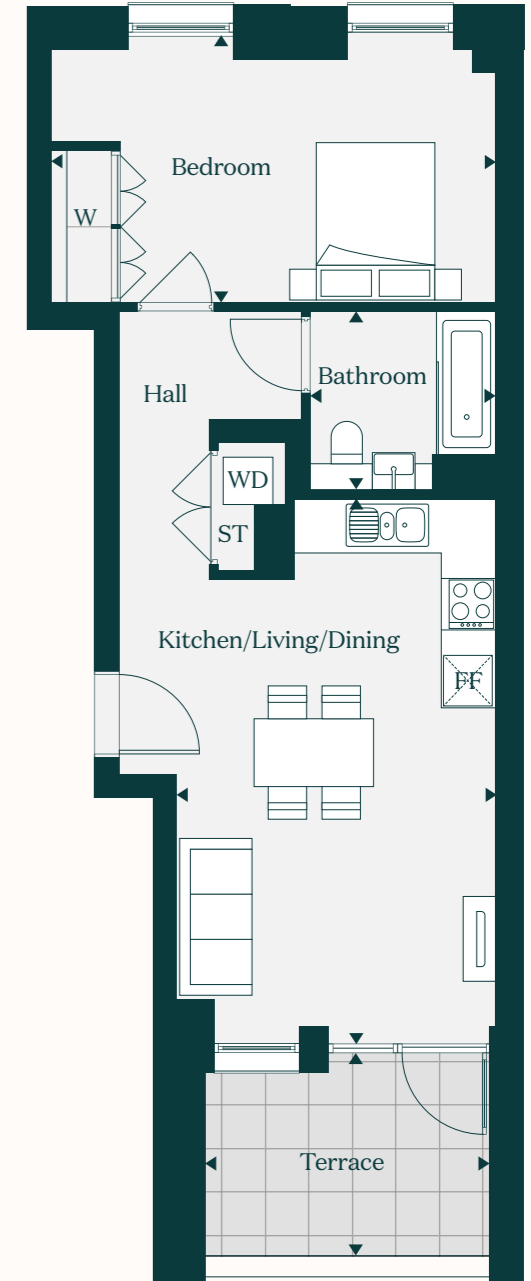
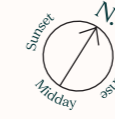
FF - Fridge Freezer ST - Storage W - Wardrobe WD - Washer Dryer



The Cedar

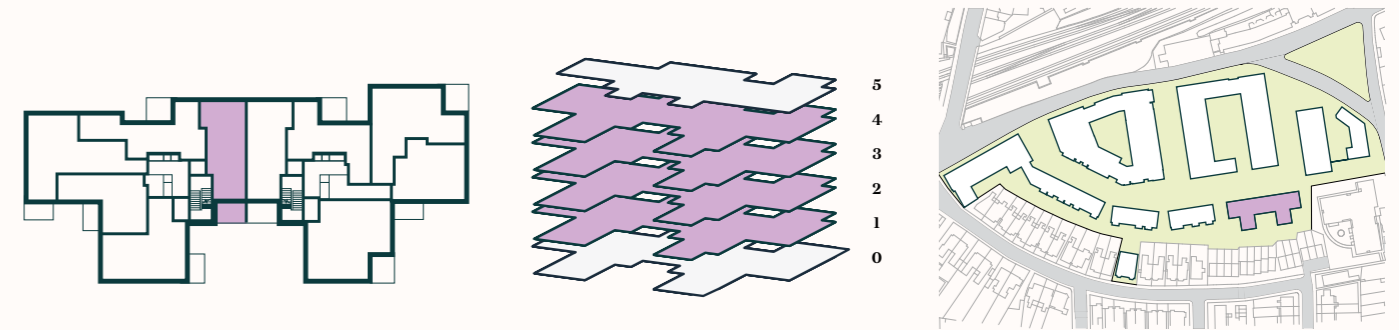
Mahonia House

Apartment / 43, 48, 53, 58



Kitchen / Living / Dining	5.2m x 3.1m		17'2" x 10'3"
Bedroom	5.2m x 3.1m		17'2" x 10'3"
Bathroom	2.2m x 2.1m		7'2" x 6'9"
Terrace	7.2 sq m		78 sq ft
<hr/>			
Gross Internal Floor Area	52.5 sq m		565 sq ft
Gross External & Internal Area	59.7 sq m		643 sq ft

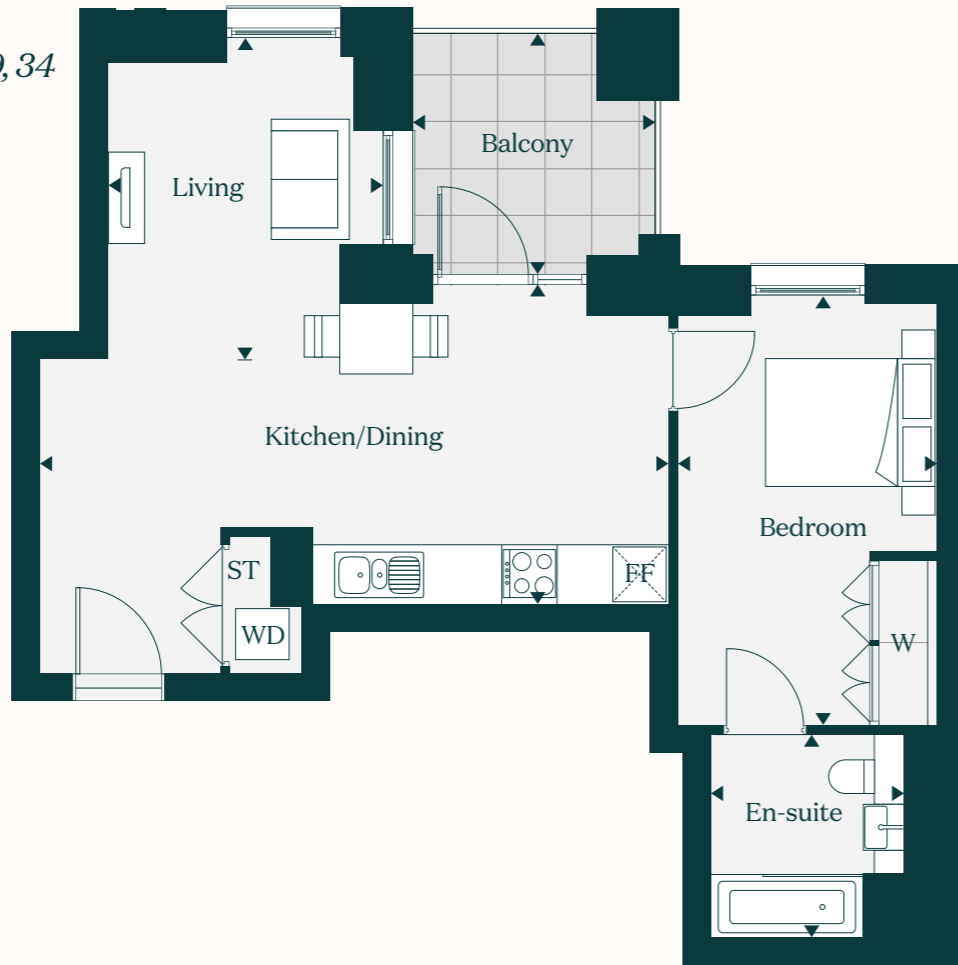
FF - Fridge Freezer ST - Storage W - Wardrobe WD - Washer Dryer



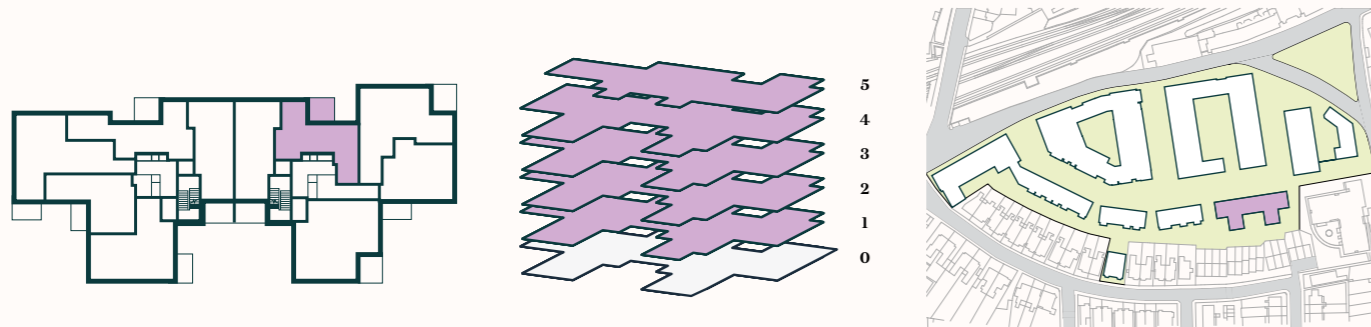
The Holly

Teasel House

Apartment / 14, 19, 24, 29, 34



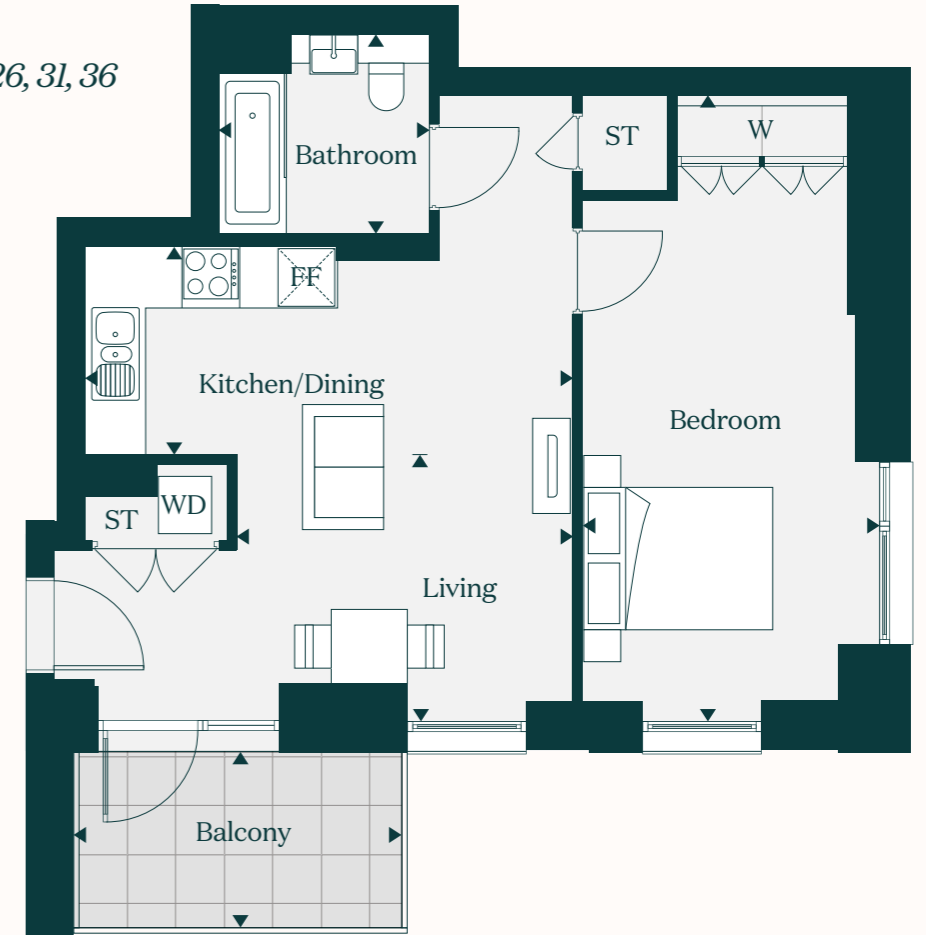
Living	3.0m x 2.8m		9'9" x 9'4"		
Kitchen / Dining	6.9m x 3.4m		22'6" x 11'3"		
Bedroom	4.7m x 2.8m		15'4" x 9'3"	Gross Internal Floor Area	51.9 sq m 559 sq ft
En-suite	2.2m x 2.1m		7'2" x 6'9"	Gross External & Internal Area	58.5 sq m 630 sq ft
Balcony	6.6 sq m		71 sq ft		
FF - Fridge Freezer	ST - Storage	W - Wardrobe	WD - Washer Dryer		



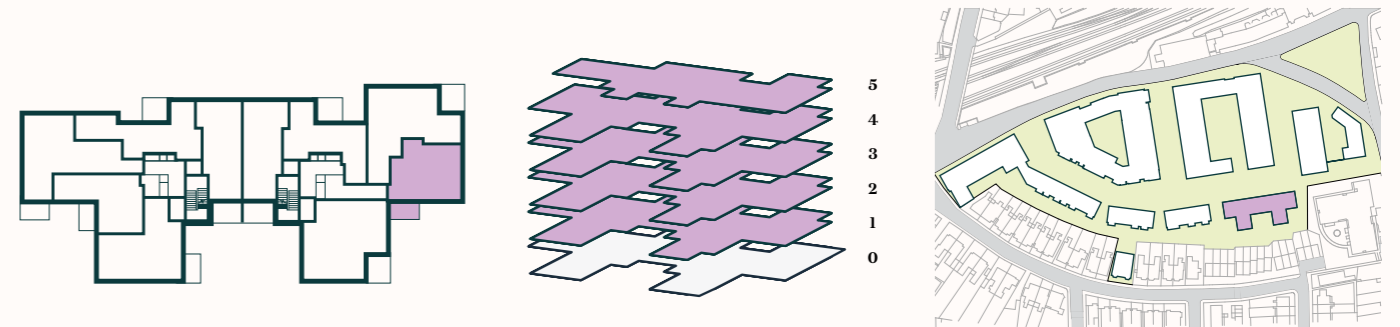
The Juniper

Teasel House

Apartment / 16, 21, 26, 31, 36



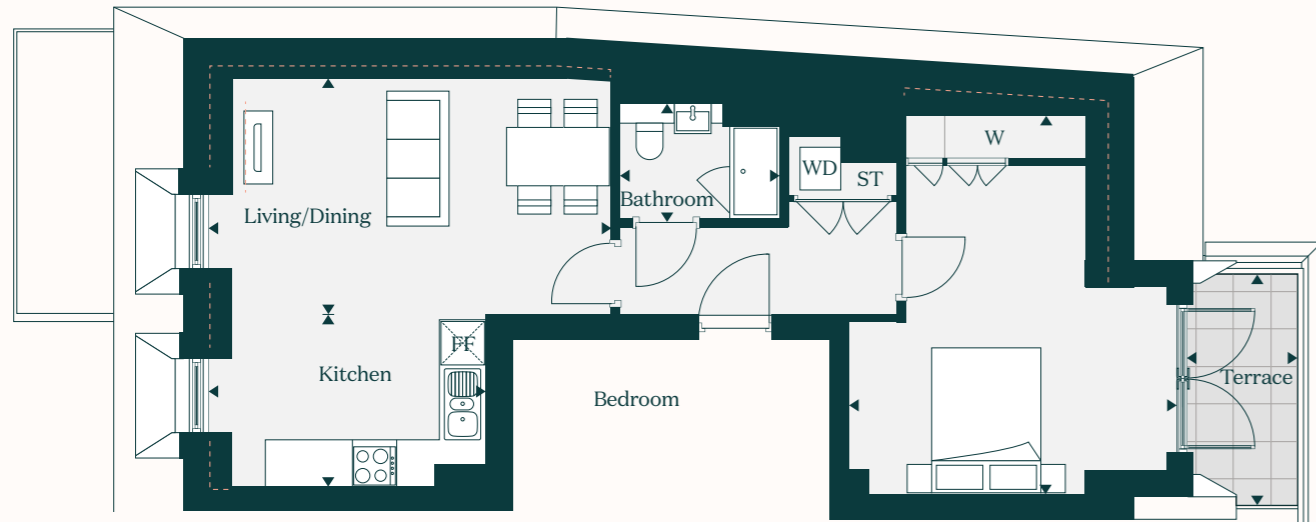
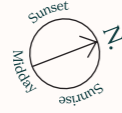
Living	3.5m x 2.7m		11'6" x 9'1"		
Kitchen / Dining	5.1m x 2.1m		16'8" x 7'2"		
Bedroom	6.5m x 3.0m		21'4" x 10'1"	Gross Internal Floor Area	52.6 sq m 567sq ft
Bathroom	2.2m x 2.1m		7'3" x 6'9"	Gross External & Internal Area	59.3 sq m 639 sq ft
Balcony	6.6 sq m		72 sq ft		
FF - Fridge Freezer	ST - Storage	W - Wardrobe	WD - Washer Dryer		



The Hazel

Charm House

Apartment / 7

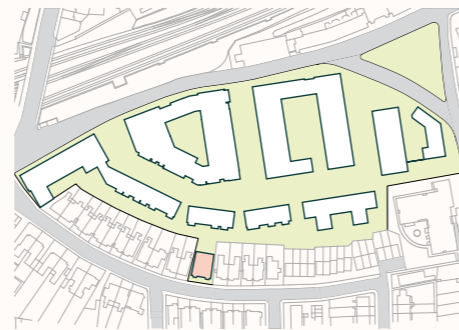
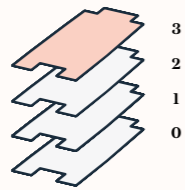
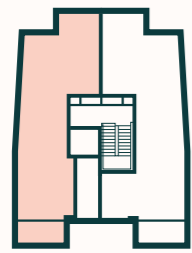


Living / Dining	5.6m x 3.2m		18'5" x 10'7"
Kitchen	3.9m x 2.3m		12'8" x 7'8"
Bedroom	5.1m x 4.5m		17'0" x 14'8"
Bathroom	2.2m x 1.6m		7'2" x 5'2"
Terrace	5.1 sq m		55.4 sq ft

Gross Internal Floor Area 57.0 sq m | 613.5 sq ft

Gross External & Internal Area 62.0 sq m | 667 sq ft

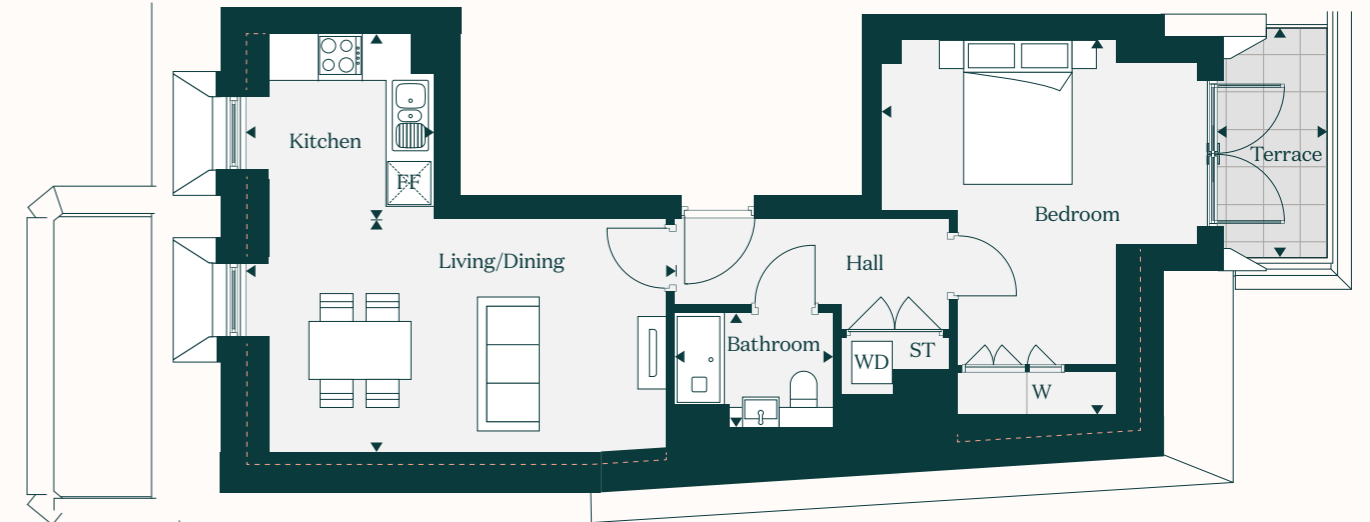
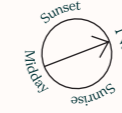
FF - Fridge Freezer - - - Sloped Roof ST - Storage W - Wardrobe WD - Washer Dryer



The Alder

Charm House

Apartment / 8

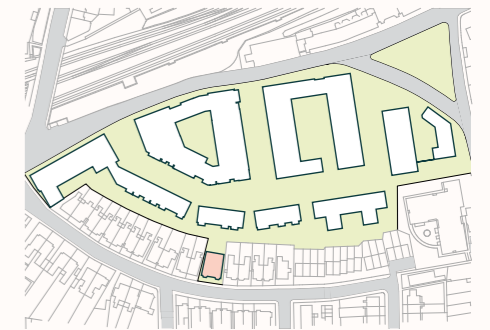
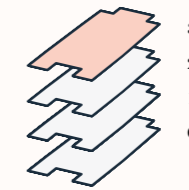


Living / Dining	5.9m x 3.2m		19'4" x 10'6"
Kitchen	2.6m x 2.5m		8'7" x 8'4"
Bedroom	5.2m x 4.5m		17'2" x 14'8"
Bathroom	2.2m x 1.6m		7'2" x 5'4"
Terrace	5.0 sq m		54 sq ft

Gross Internal Floor Area 53.0 sq m | 570 sq ft

Gross External & Internal Area 58.0 sq m | 624 sq ft

FF - Fridge Freezer - - - Sloped Roof ST - Storage W - Wardrobe WD - Washer Dryer





2 bedroom apartments

The Rowan



Mahonia House

Apartment / 37

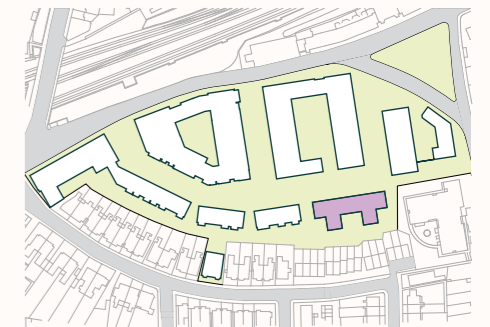
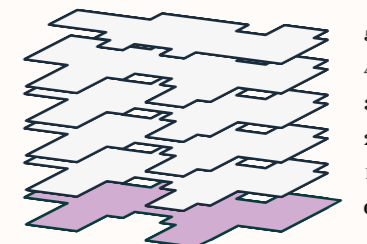
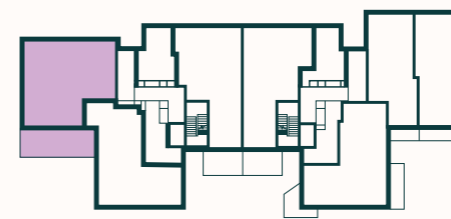


Living / Dining	6.8m x 4.0m		22'5" x 13'4"
Kitchen	2.7m x 2.7m		9'1" x 9'0"
Bedroom 1	4.6m x 4.4m		15'2" x 14'4"
Bedroom 2	4.9m x 3.3m		16'0" x 11'0"
Bathroom	2.6m x 2.2m		8'5" x 7'2"
En-suite	2.2m x 1.6m		7'2" x 5'4"
Terrace	29.3 sq m		316 sq ft

Gross Internal Floor Area 95.5 sq m | 1,028 sq ft

Gross External & Internal Area 125.0 sq m | 1,345 sq ft

FF - Fridge Freezer ST - Storage W - Wardrobe WD - Washer Dryer

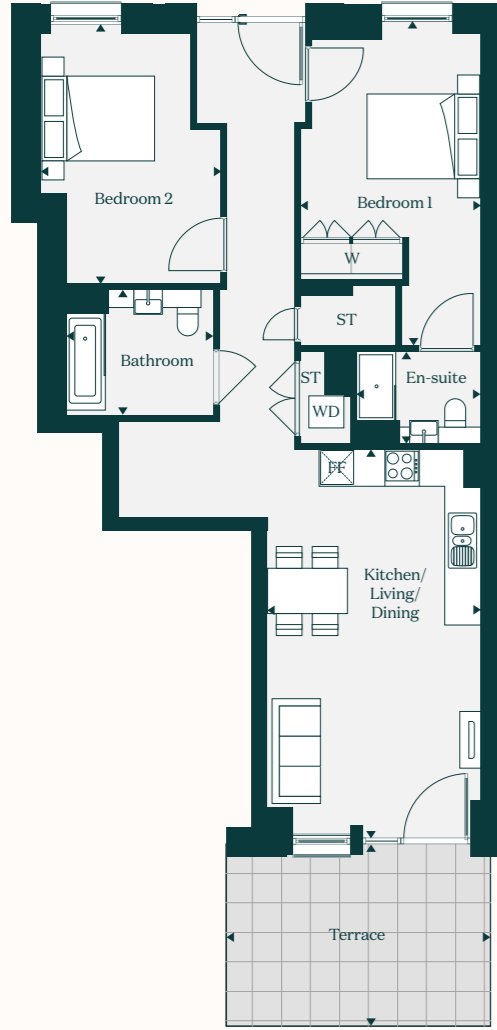


Floorplans shown are indicative only. The kitchen layout and furniture positions are for indicative purposes only. All dimensions indicated are approximate and should not be relied upon for carpet sizes or items of furniture. Peabody reserves the right to make changes to these plans prior to exchange of contracts. For exact plot specification, details of external and internal finishes, dimensions and floorplan differences, please speak to a Sales Executive for more details.

The Birch

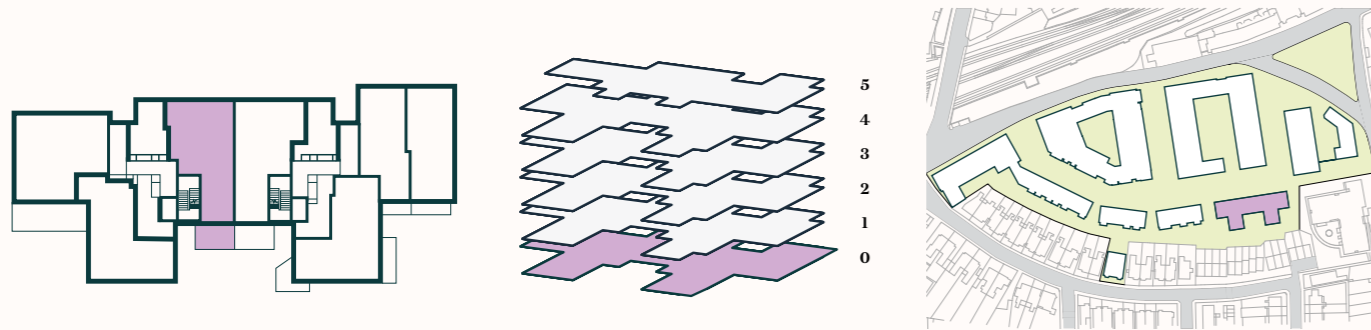
Mahonia House

Apartment / 38



Kitchen / Living / Dining	6.8m x 3.7m		22'4" x 12'4"
Bedroom 1	5.7m x 3.2m		18'8" x 10'5"
Bedroom 2	4.5m x 3.2m		15'0" x 10'7"
Bathroom	2.6m x 2.2m		8'5" x 7'2"
En-suite	2.2m x 1.6m		7'2" x 5'4"
Terrace	14.4 sq m		155 sq ft
<hr/>			
Gross Internal Floor Area	84.2 sq m		907 sq ft
Gross External & Internal Area	98.6 sq m		1,062 sq ft

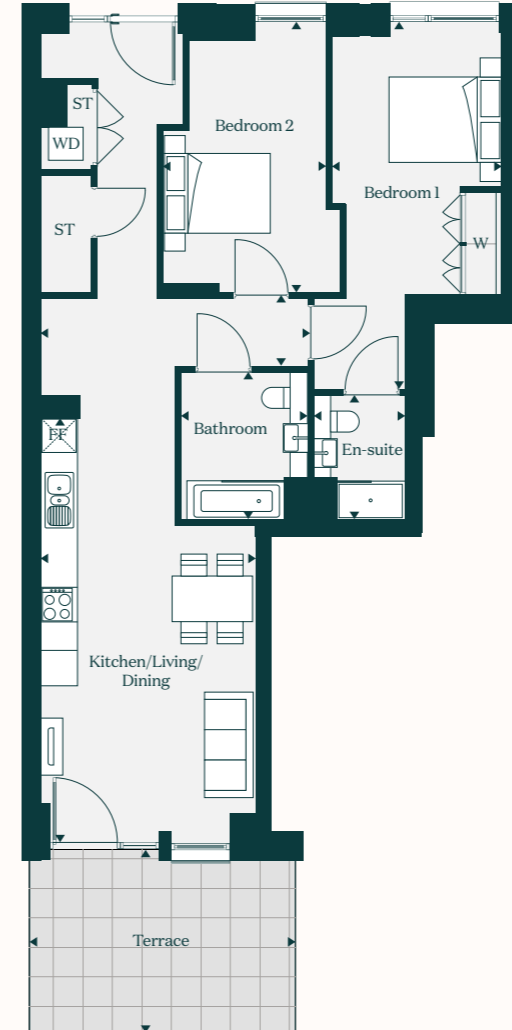
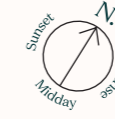
FF - Fridge Freezer ST - Storage W - Wardrobe WD - Washer Dryer



The Willow

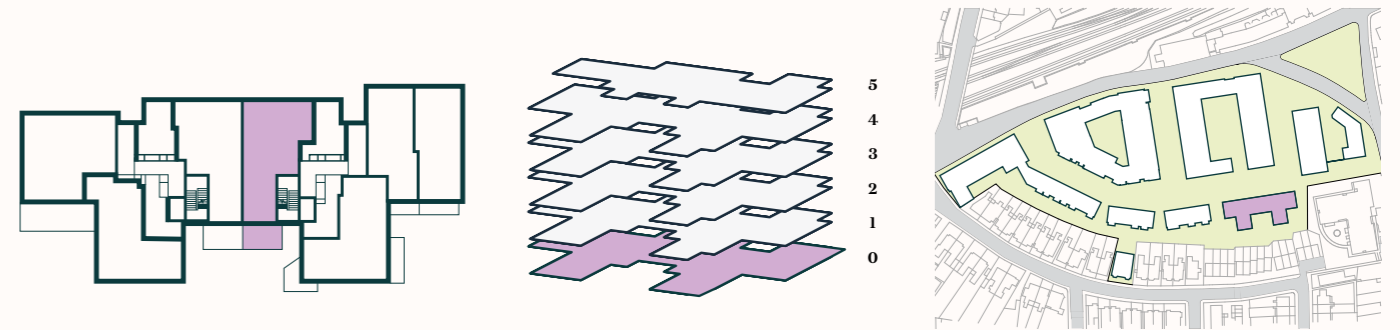
Teasel House

Apartment / 9

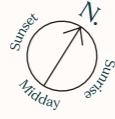


Kitchen / Living / Dining	7.4m x 3.7m		24'4" x 12'5"
Bedroom 1	6.4m x 2.9m		21'0" x 9'8"
Bedroom 2	4.7m x 2.4m		15'4" x 7'9"
Bathroom	2.6m x 2.2m		8'5" x 7'2"
En-suite	2.2m x 1.6m		7'2" x 5'4"
Terrace	14.4 sq m		155 sq ft
<hr/>			
Gross Internal Floor Area	84.5 sq m		910 sq ft
Gross External & Internal Area	98.9 sq m		1,065 sq ft

FF - Fridge Freezer ST - Storage W - Wardrobe WD - Washer Dryer



The Hawthorn



Teasel House

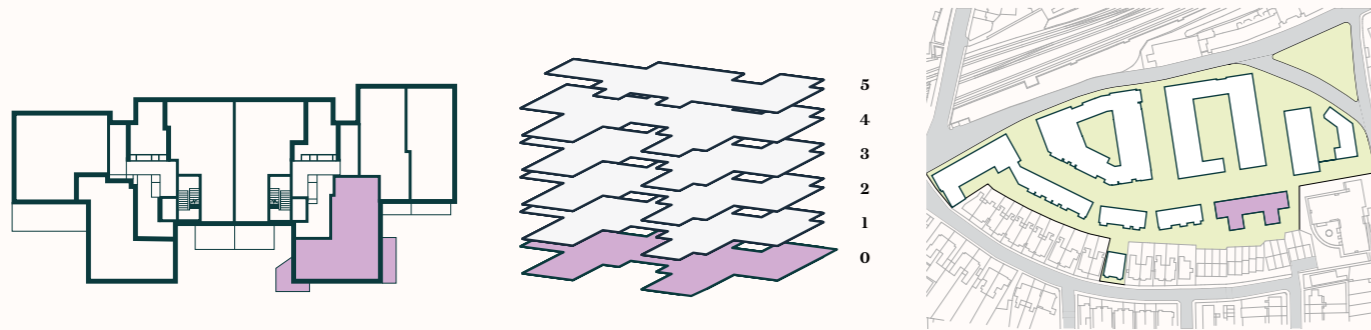
Apartment / 12

Kitchen / Living / Dining	6.7m x 4.6m		22'0" x 15'0"
Bedroom 1	5.1m x 3.3m		16'8" x 10'9"
Bedroom 2	5.1m x 3.2m		17'0" x 10'7"
Bathroom	2.6m x 2.2m		8'5" x 7'2"
En-suite	2.2m x 1.5m		7'2" x 5'4"
Terrace 1	7.7 sq m		83 sq ft
Terrace 2	8.8 sq m		95 sq ft

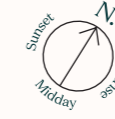
Gross Internal Floor Area	85.8 sq m		924 sq ft
Gross External & Internal Area	102.3 sq m		1,102 sq ft



FF - Fridge Freezer ST - Storage W - Wardrobe WD - Washer Dryer



The Larch

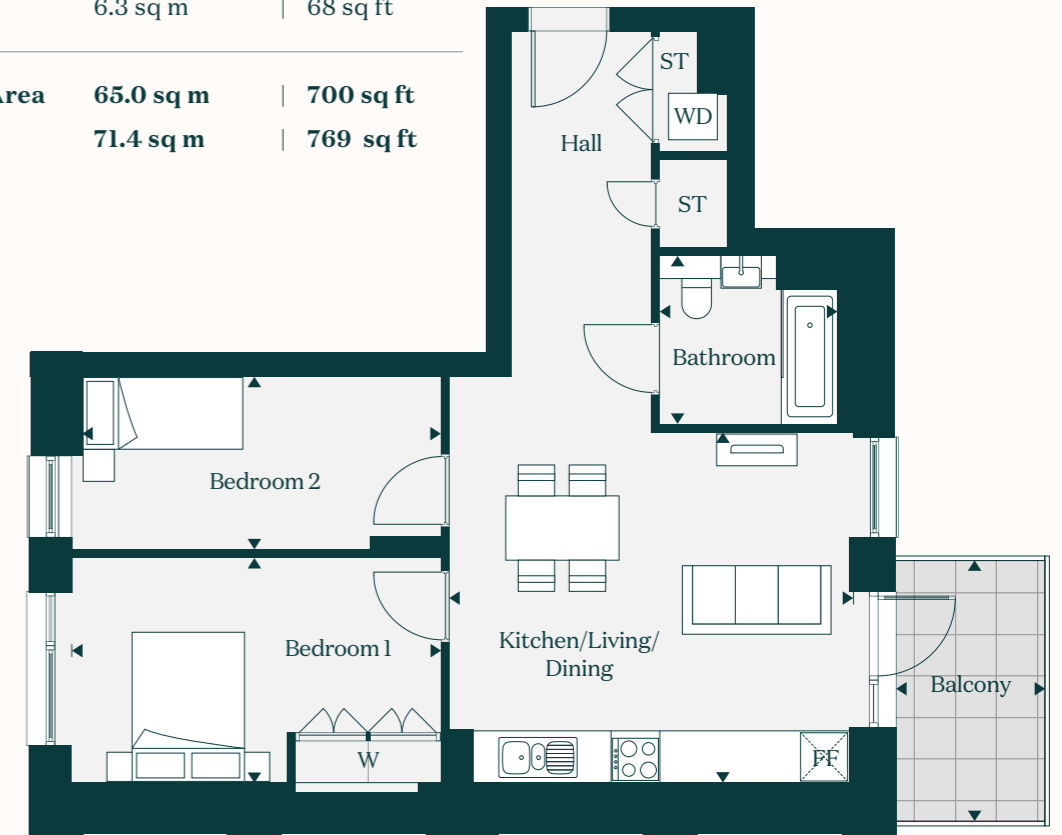


Mahonia House

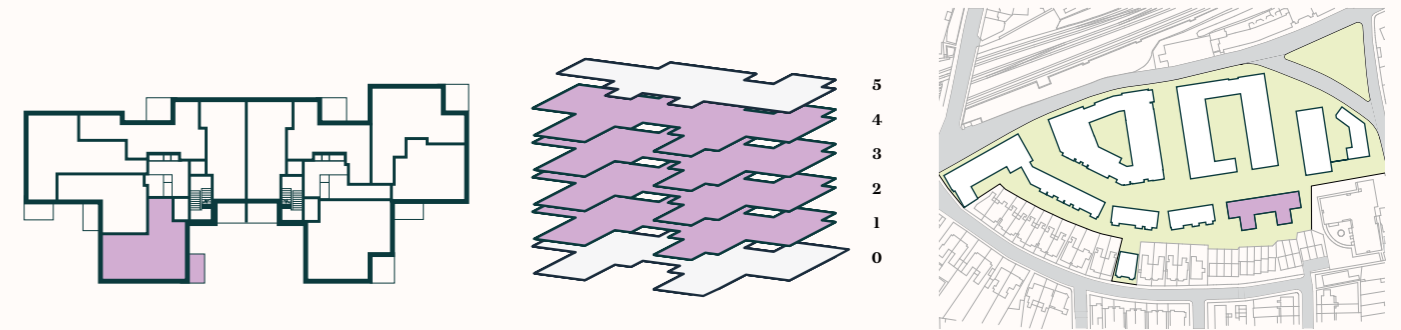
Apartment / 39, 44, 49, 54

Kitchen / Living / Dining	5.2m x 4.3m		17'0" x 14'4"
Bedroom 1	4.8m x 2.8m		15'7" x 9'2"
Bedroom 2	4.8m x 2.1m		15'7" x 7'1"
Bathroom	2.2m x 2.1m		7'2" x 6'9"
Balcony	6.3 sq m		68 sq ft

Gross Internal Floor Area	65.0 sq m		700 sq ft
Gross External & Internal Area	71.4 sq m		769 sq ft



FF - Fridge Freezer ST - Storage W - Wardrobe WD - Washer Dryer



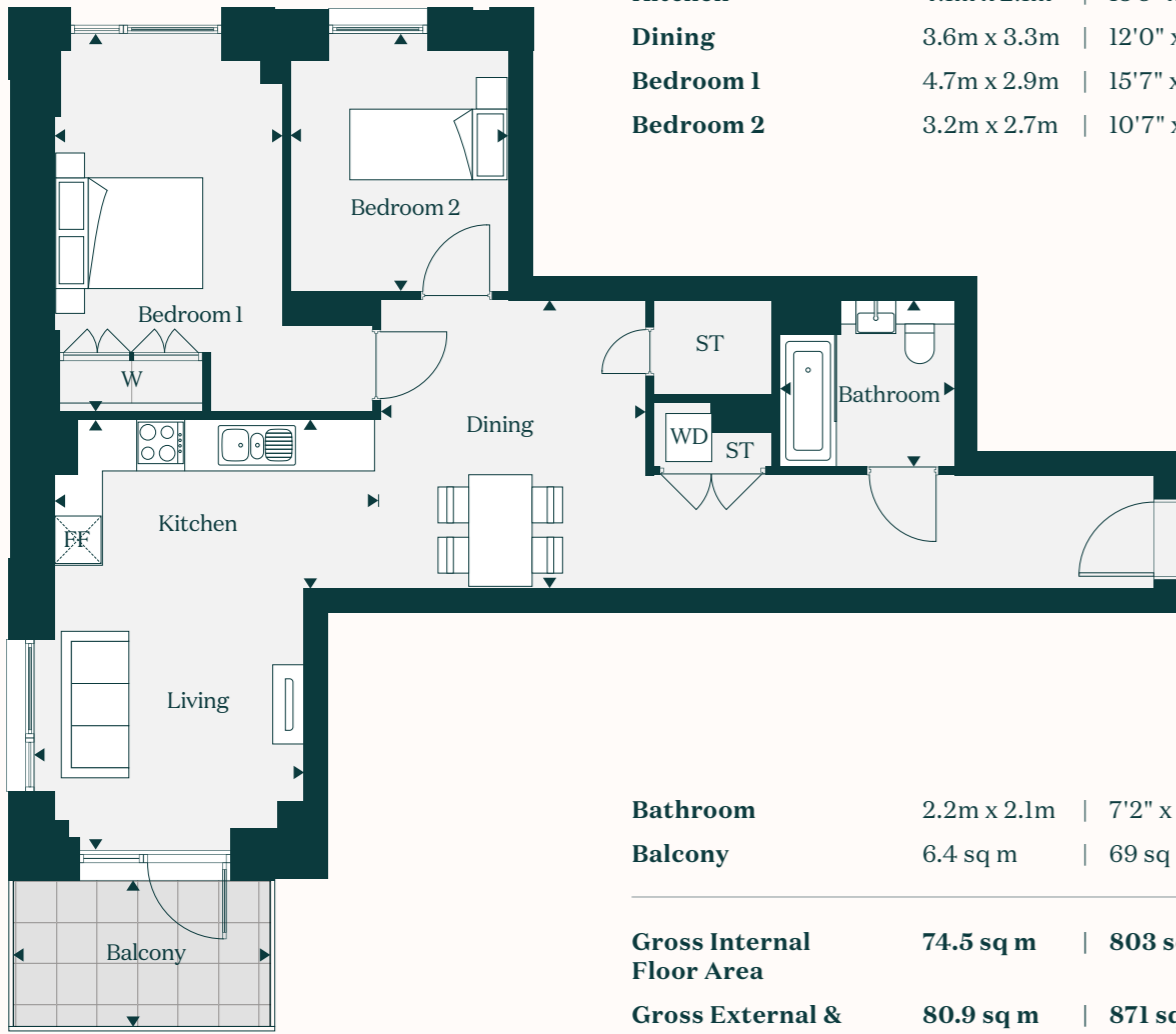
The Yew



Mahonia House

Apartment / 41, 46, 51, 56

Living	3.4m x 3.2m		11'2" x 10'8"
Kitchen	4.1m x 2.1m		13'5" x 7'0"
Dining	3.6m x 3.3m		12'0" x 11'0"
Bedroom 1	4.7m x 2.9m		15'7" x 9'7"
Bedroom 2	3.2m x 2.7m		10'7" x 9'0"

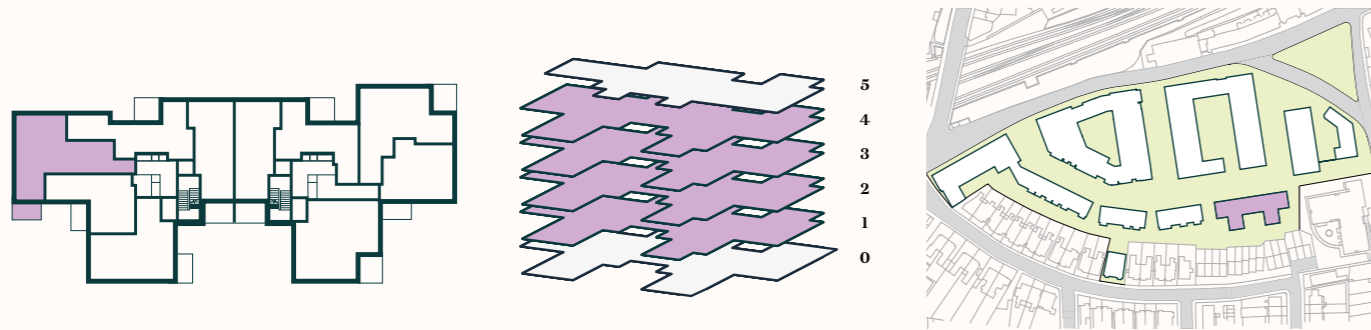


Bathroom	2.2m x 2.1m		7'2" x 6'9"
Balcony	6.4 sq m		69 sq ft

Gross Internal Floor Area 74.5 sq m | 803 sq ft

Gross External & Internal Area 80.9 sq m | 871 sq ft

FF - Fridge Freezer ST - Storage W - Wardrobe WD - Washer Dryer



The Sycamore



Teasel House

Apartment / 15, 20, 25, 30, 35

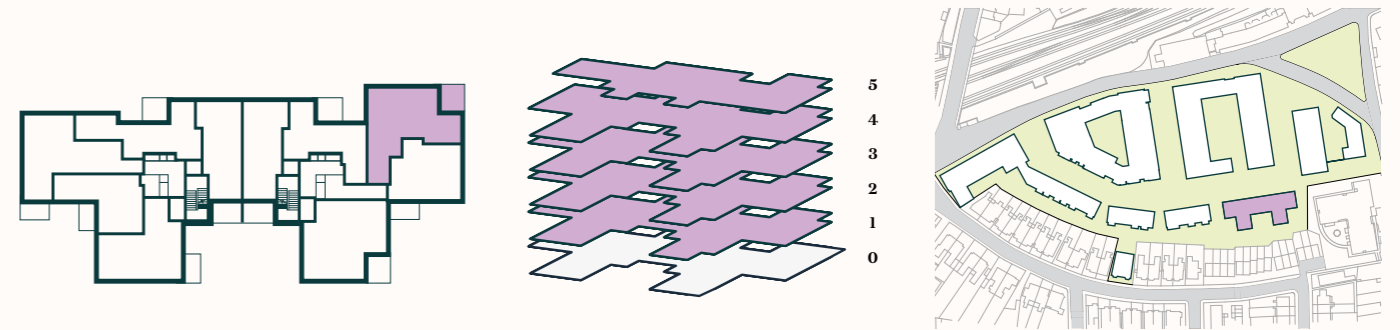


Living	3.3m x 2.7m		11'0" x 9'1"
Kitchen / Dining	5.2m x 3.2m		17'1" x 10'8"
Bedroom 1	4.6m x 3.0m		15'2" x 9'9"
Bedroom 2	4.6m x 2.4m		15'3" x 7'9"
Bathroom	2.2m x 2.1m		7'2" x 6'9"
Balcony	7.1 sq m		76 sq ft

Gross Internal Floor Area 73.4 sq m | 790 sq ft

Gross External & Internal Area 80.5 sq m | 867 sq ft

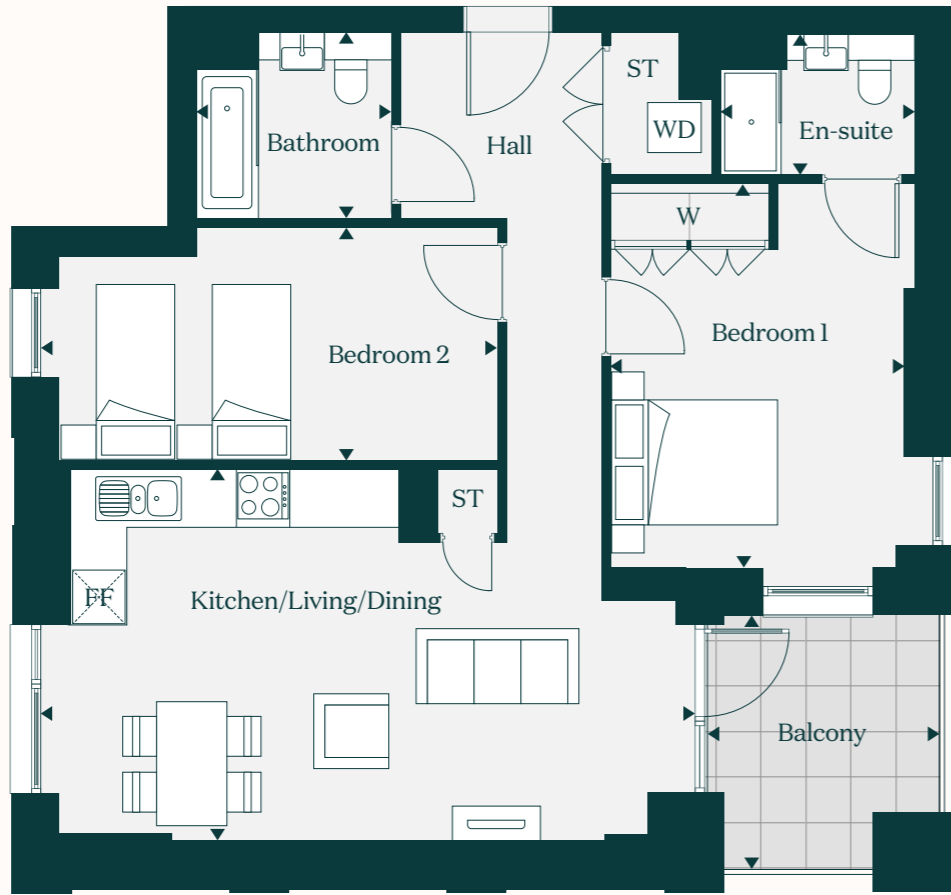
FF - Fridge Freezer ST - Storage W - Wardrobe WD - Washer Dryer



The Laurel

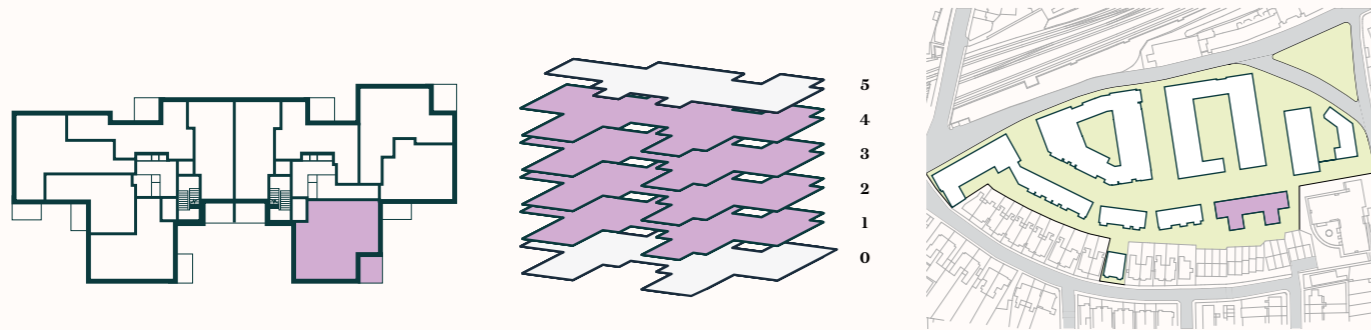
Teasel House

Apartment / 17, 22, 27, 32



Kitchen / Living / Dining	7.4m x 4.2m 24'4" x 13'8"	Balcony	7.3 sq m 79 sq ft
Bedroom 1	4.3m x 3.3m 14'3" x 11'0"	Gross Internal Floor Area	78.2 sq m 842 sq ft
Bedroom 2	5.2m x 2.6m 17'2" x 8'7"	Gross External & Internal Area	85.5 sq m 921 sq ft
Bathroom	2.2m x 2.1m 7'2" x 6'9"		
En-suite	2.2m x 1.6m 7'2" x 5'2"		

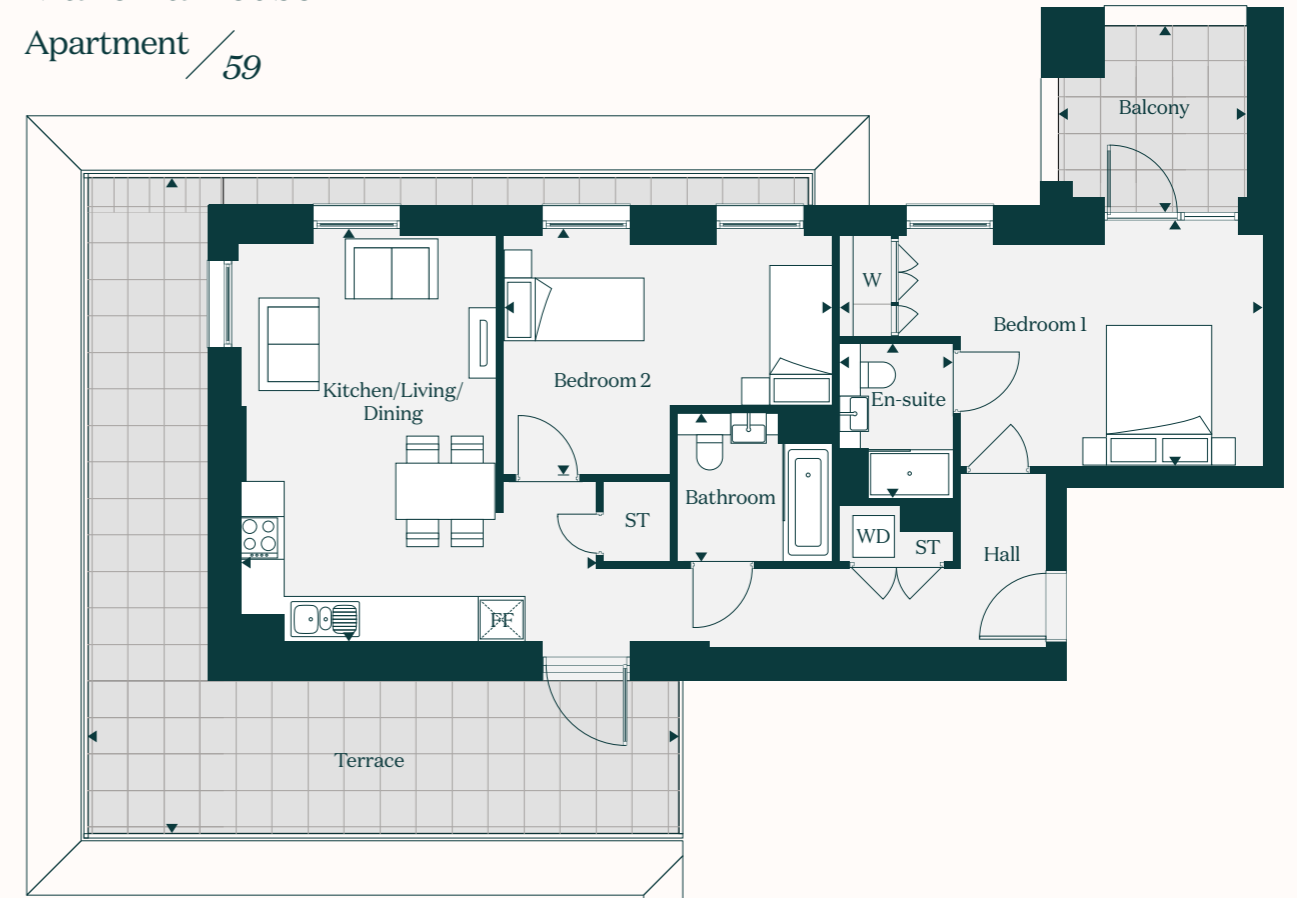
FF - Fridge Freezer ST - Storage W - Wardrobe WD - Washer Dryer



The Aspen

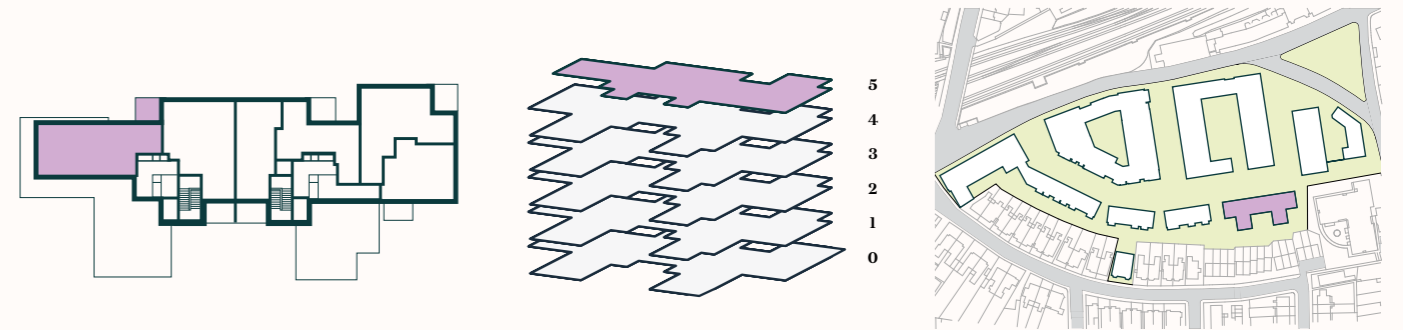
Mahonia House

Apartment / 59

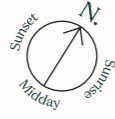


Kitchen / Living / Dining	5.8m x 5.1m 19'3" x 16'8"	Terrace	30.8 sq m 332 sq ft
Bedroom 1	6.0m x 3.4m 19'8" x 11'3"	Balcony	6.4 sq m 69 sq ft
Bedroom 2	4.6m x 3.5m 15'4" x 11'7"	Gross Internal Floor Area	78.6 sq m 846 sq ft
Bathroom	2.2m x 2.1m 7'2" x 6'9"	Gross External & Internal Area	115.9 sq m 1,248 sq ft
En-suite	2.2m x 1.6m 7'2" x 5'3"		

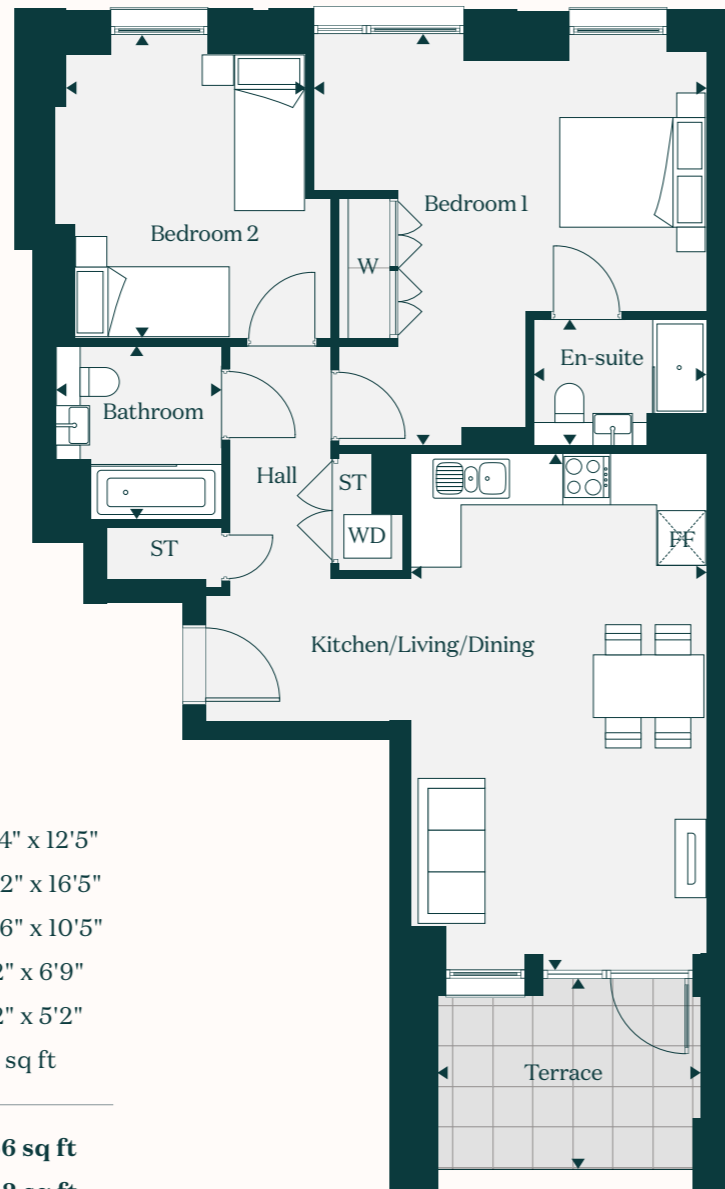
FF - Fridge Freezer ST - Storage W - Wardrobe WD - Washer Dryer



The Laburnum



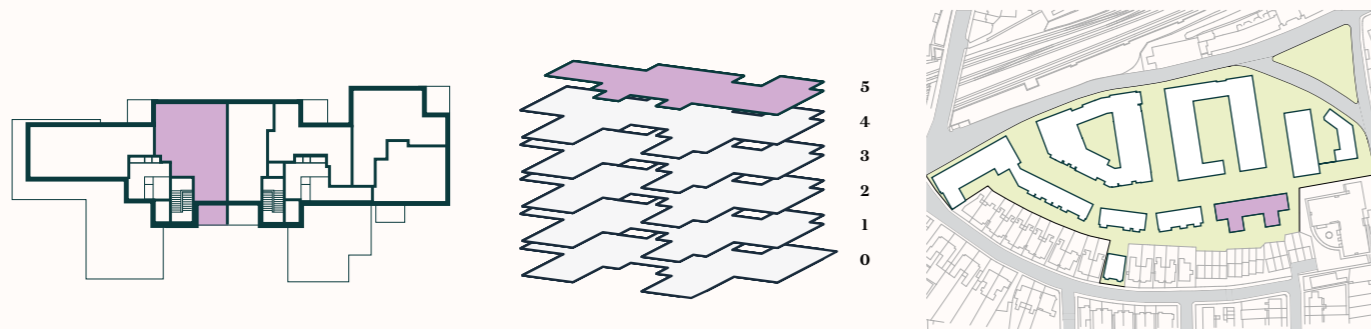
Mahonia House
Apartment / 60



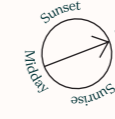
Kitchen / Living / Dining	6.5m x 3.8m		21'4" x 12'5"
Bedroom 1	5.2m x 5.0m		17'2" x 16'5"
Bedroom 2	3.8m x 3.1m		12'6" x 10'5"
Bathroom	2.2m x 2.1m		7'2" x 6'9"
En-suite	2.2m x 1.6m		7'2" x 5'2"
Terrace	7.9 sq m		86 sq ft

Gross Internal Floor Area	79.5 sq m		856 sq ft
Gross External & Internal Area	87.5 sq m		942 sq ft

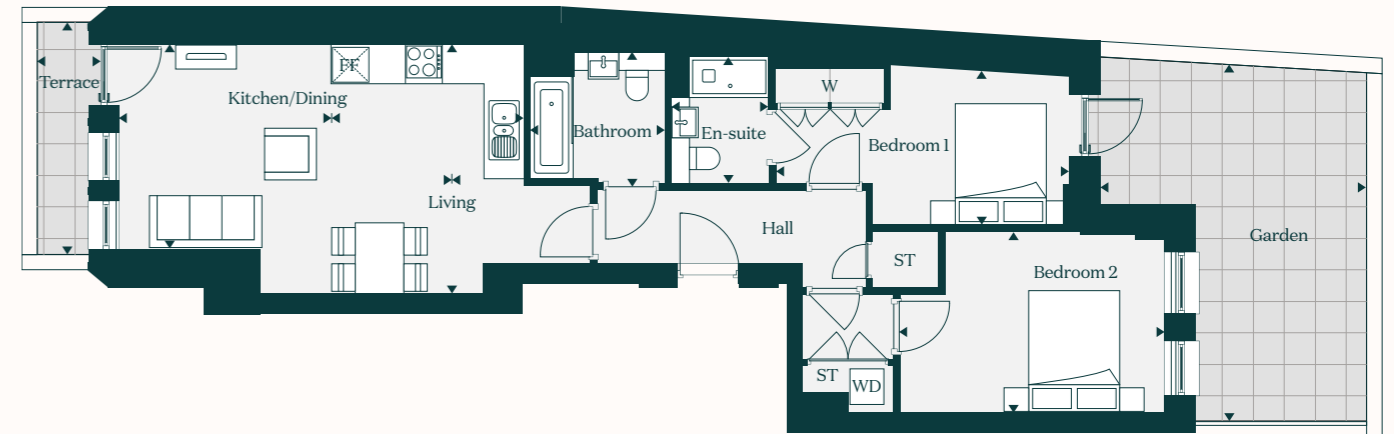
FF - Fridge Freezer ST - Storage W - Wardrobe WD - Washer Dryer



The Fern



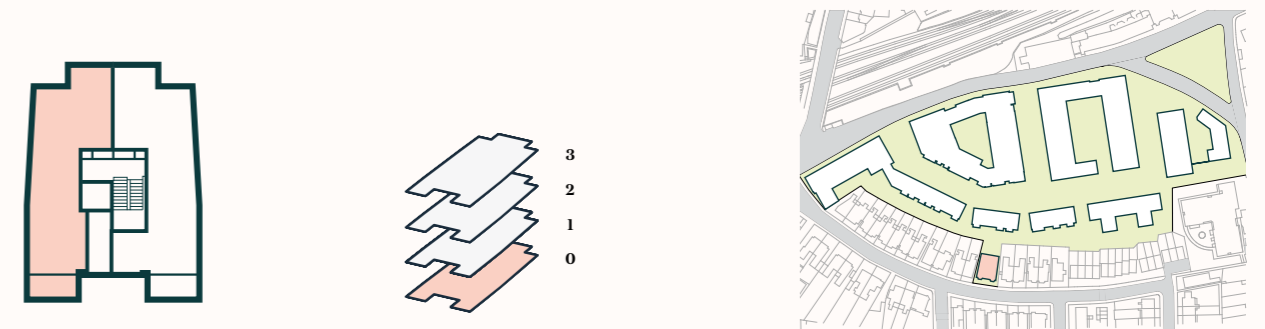
Charm House
Apartment / 1



Living	3.4m x 3.3m		11'2" x 11'1"
Kitchen / Dining	4.1m x 3.2m		13'5" x 10'7"
Bedroom 1	4.8m x 2.5m		15'8" x 8'4"
Bedroom 2	4.3m x 3.3m		14'3" x 11'0"
Bathroom	2.2m x 2.1m		7'2" x 6'9"
En-suite	2.0m x 1.6m		6'7" x 5'2"
Garden	20.4 sq m		220 sq ft

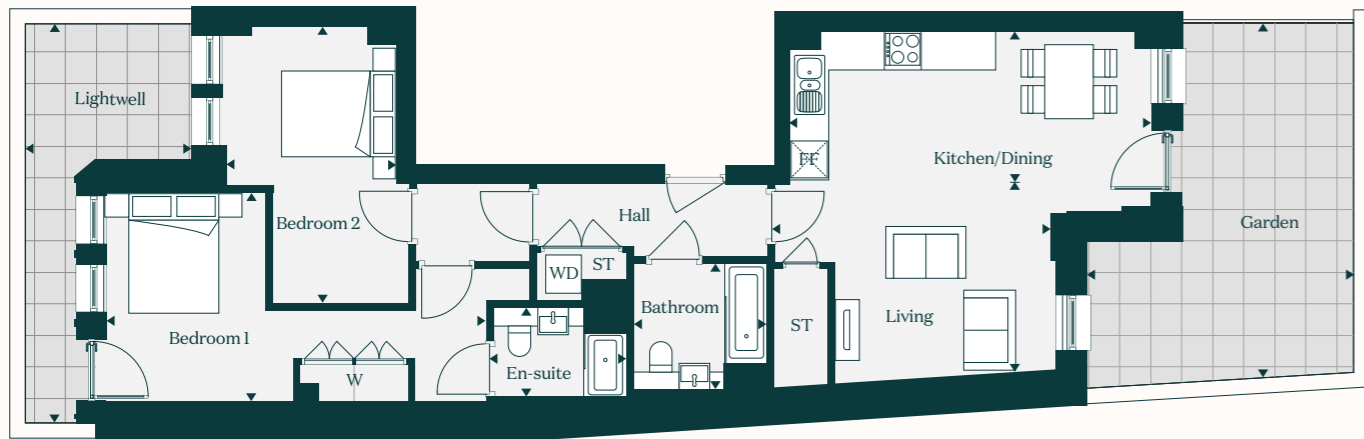
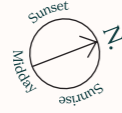
Gross Internal Floor Area	72.5 sq m		781 sq ft
Gross External & Internal Area	93.0 sq m		1,001 sq ft

FF - Fridge Freezer ST - Storage W - Wardrobe WD - Washer Dryer



The Oak

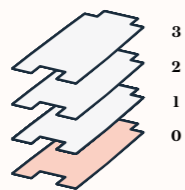
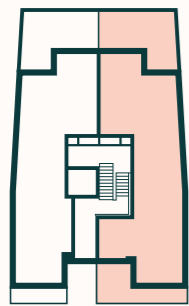
Charm House
Apartment / 2



Living	4.6m x 2.6m		15'1" x 8'8"
Kitchen / Dining	6.0m x 2.6m		20'0" x 8'6"
Bedroom 1	6.2m x 3.4m		20'5" x 11'3"
Bedroom 2	4.5m x 2.8m		15'0" x 9'2"
Bathroom	2.2m x 2.1m		7'2" x 6'9"
En-suite	2.2m x 1.4m		7'4" x 5'0"
Garden	20.4 sq m		220 sq ft

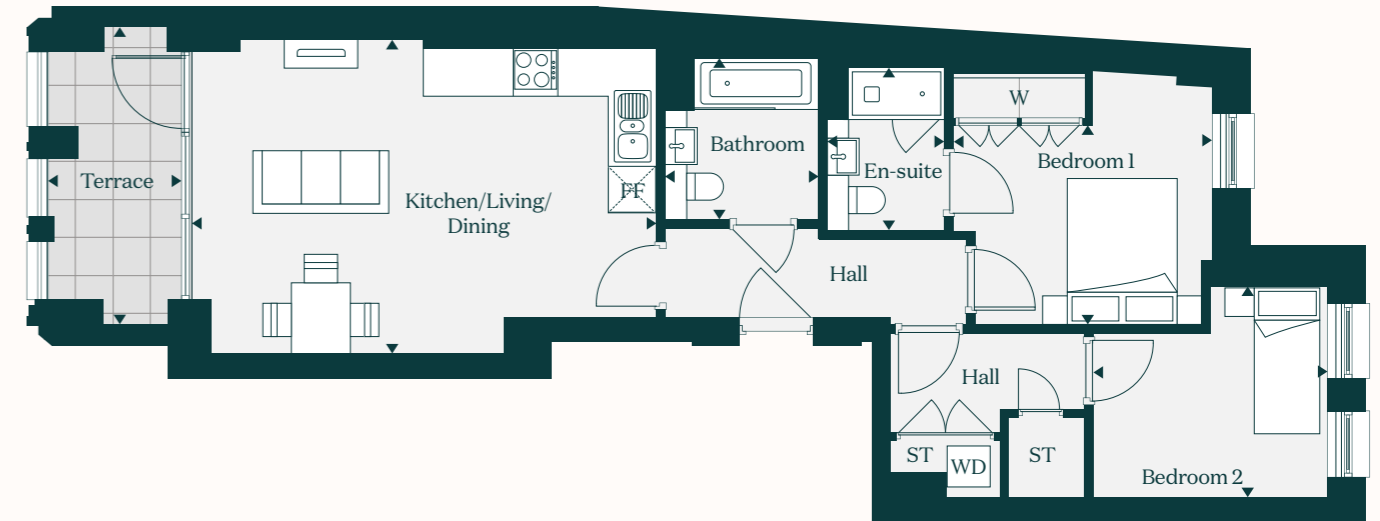
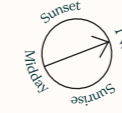
Gross Internal Floor Area	78.0 sq m		840 sq ft
Gross External & Internal Area	98.4 sq m		1,060 sq ft

FF - Fridge Freezer ST - Storage W - Wardrobe WD - Washer Dryer



The Snowdrop

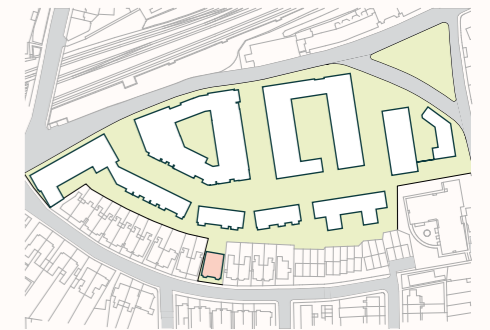
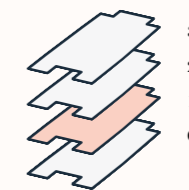
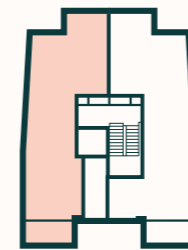
Charm House
Apartment / 3



Kitchen / Living / Dining	6.3m x 4.2m		20'8" x 14'0"
Bedroom 1	3.4m x 3.1m		11'4" x 10'4"
Bedroom 2	3.2m x 2.8m		10'5" x 9'4"
Bathroom	2.2m x 2.1m		7'2" x 6'9"
En-suite	2.2m x 1.6m		7'2" x 5'4"
Terrace	6.9 sq m		75 sq ft

Gross Internal Floor Area	68.4 sq m		736 sq ft
Gross External & Internal Area	75.3 sq m		811 sq ft

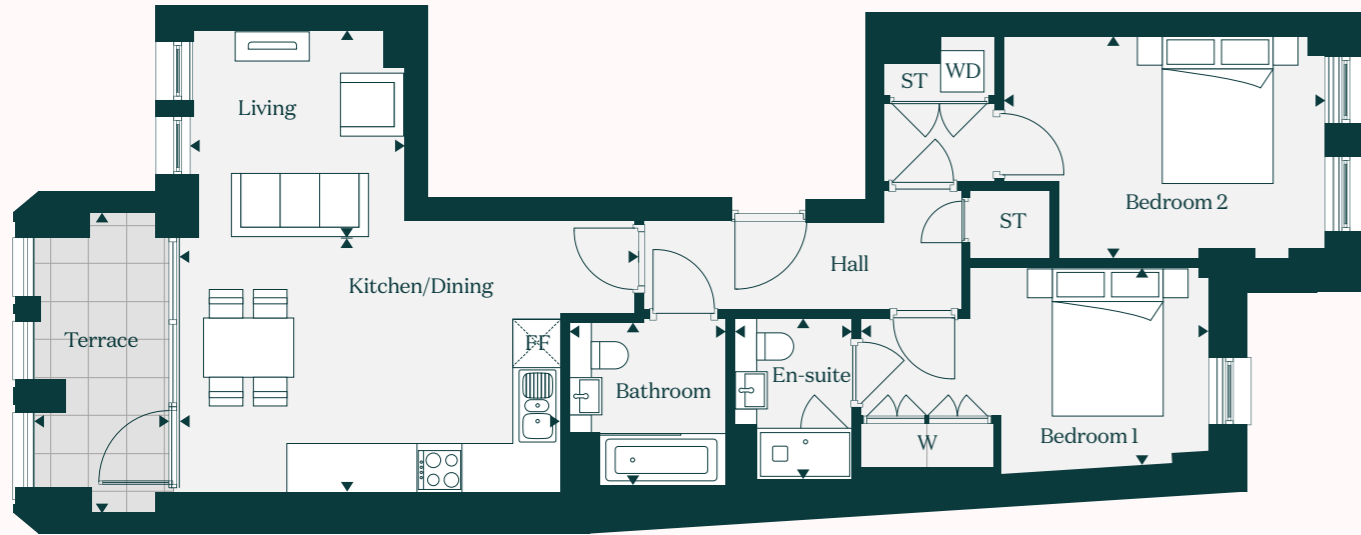
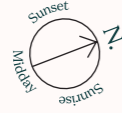
FF - Fridge Freezer ST - Storage W - Wardrobe WD - Washer Dryer



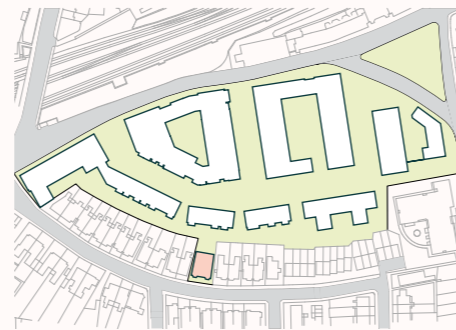
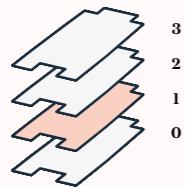
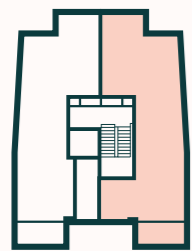
The Elm

Charm House

Apartment / 4



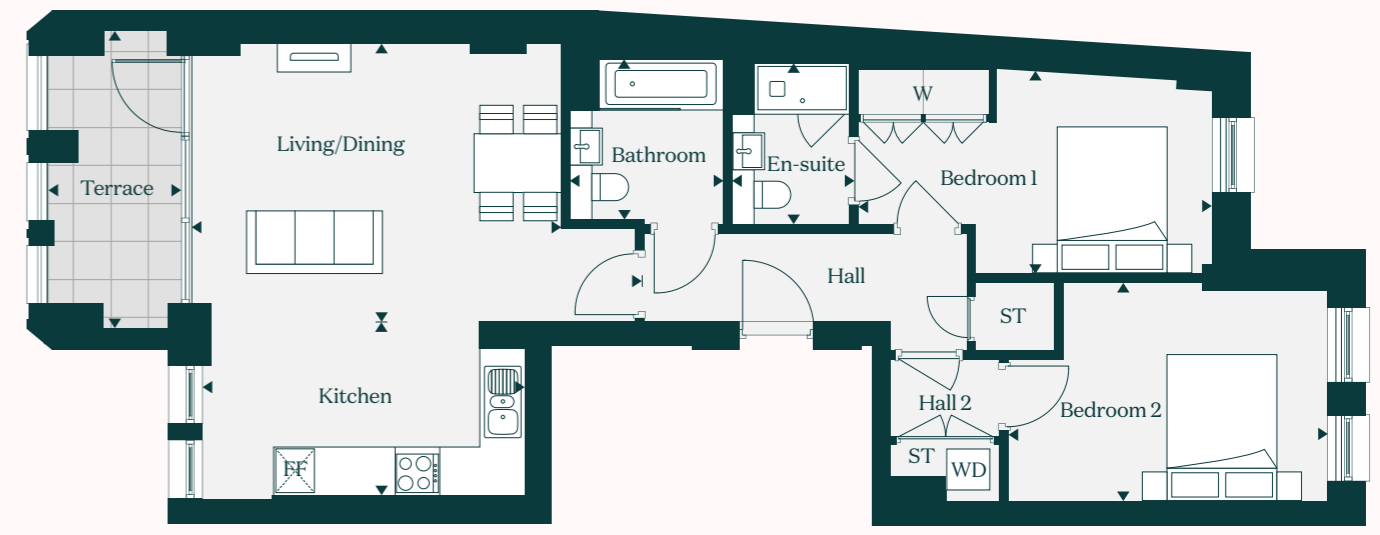
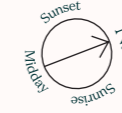
Living	2.9m x 2.7m		9'6" x 9'1"		
Kitchen / Dining	6.2m x 3.4m		20'4" x 11'2"		
Bedroom 1	4.7m x 2.6m		15'4" x 8'8"		
Bedroom 2	4.4m x 3.0m		14'5" x 9'9"		
Bathroom	2.2m x 2.1m		7'2" x 6'9"	Gross Internal Floor Area	74.0 sq m 796 sq ft
En-suite	2.2m x 1.6m		7'2" x 5'2"	Gross External & Internal Area	81.0 sq m 872 sq ft
Terrace	6.8 sq m		74 sq ft		
FF - Fridge Freezer	ST - Storage	W - Wardrobe	WD - Washer Dryer		



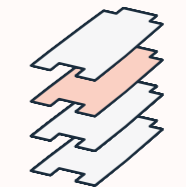
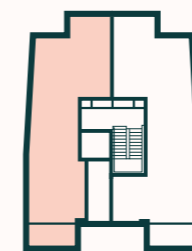
The Fuchsia

Charm House

Apartment / 5



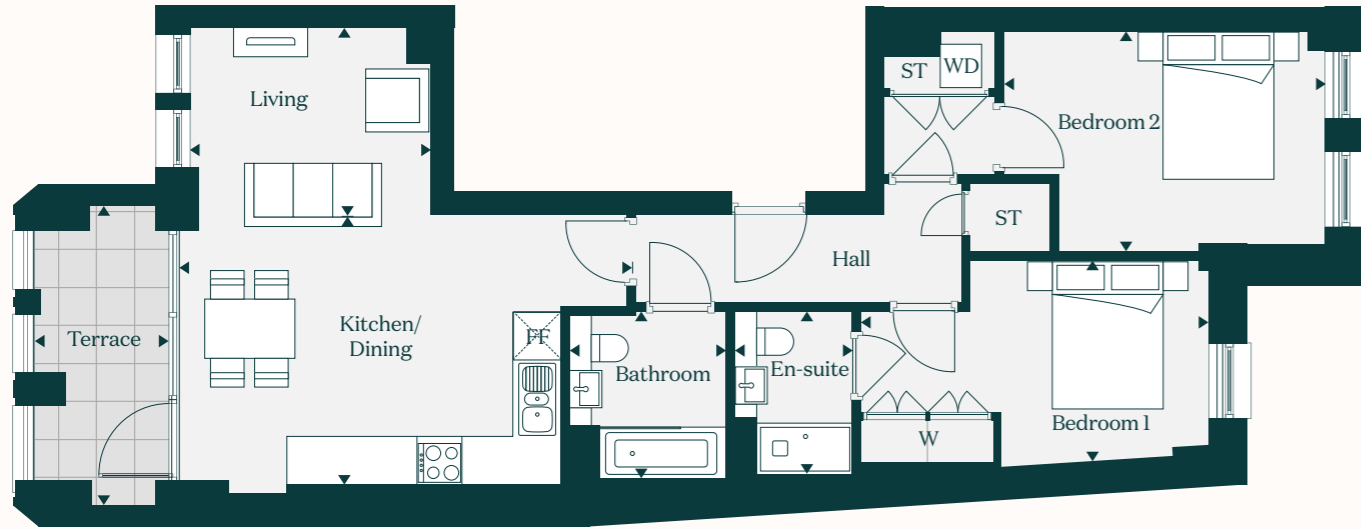
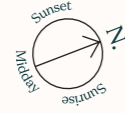
Living / Dining	6.0m x 3.7m		19'8" x 12'4"		
Kitchen	4.4m x 2.3m		14'5" x 7'8"		
Bedroom 1	4.8m x 2.8m		15'9" x 9'2"		
Bedroom 2	4.3m x 3.0m		14'3" x 9'8"	Gross Internal Floor Area	77.2 sq m 831 sq ft
Bathroom	2.2m x 2.1m		7'2" x 6'9"	Gross External & Internal Area	84.2 sq m 907 sq ft
En-suite	2.2m x 1.6m		7'2" x 5'2"		
Terrace	7.0 sq m		76 sq ft		
FF - Fridge Freezer	ST - Storage	W - Wardrobe	WD - Washer Dryer		



The Walnut

Charm House

Apartment / 6

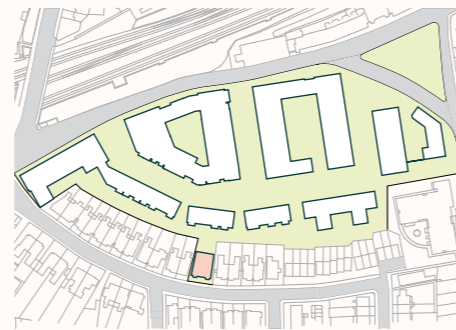
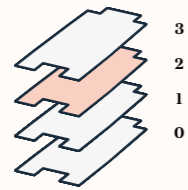
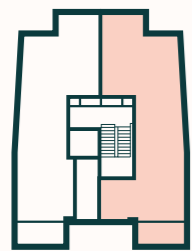


Living	3.2m x 2.5m		10'7" x 8'3"
Kitchen / Dining	6.0m x 3.6m		19'8" x 12'0"
Bedroom 1	4.7m x 2.7m		15'4" x 9'0"
Bedroom 2	4.3m x 3.0m		14'3" x 9'9"
Bathroom	2.2m x 2.1m		7'2" x 6'9"
En-suite	2.2m x 1.6m		7'2" x 5'2"
Terrace	6.9 sq m		75 sq ft

Gross Internal Floor Area **75.0 sq m** | **807 sq ft**

Gross External & Internal Area **82.0 sq m** | **883 sq ft**

FF - Fridge Freezer ST - Storage W - Wardrobe WD - Washer Dryer



Shared Ownership*

How much would it cost?

Buy your share between 25-75%, then pay rent on the remaining.

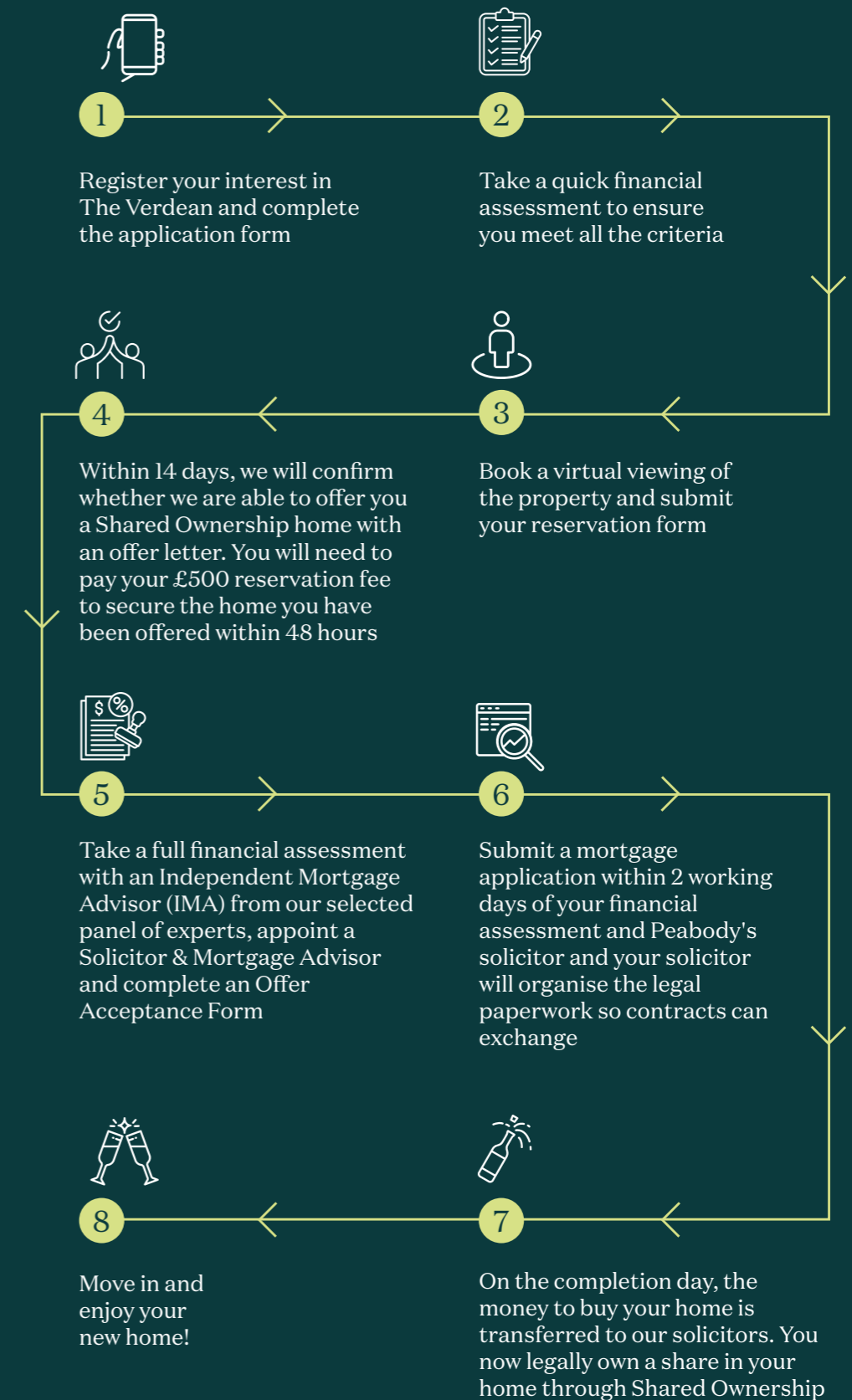
2-bed apartment available from £132,750 for a 25% share.

Example monthly costs of a 2 bedroom apartments *£132,750 for a 25% share:*



That means that you will need a deposit of just **£13,275**

The Buying Process





“
Everyone at Peabody New Homes was so helpful and very efficient, guiding us through each stage of the processes.
”

Meet Raph and Jaye

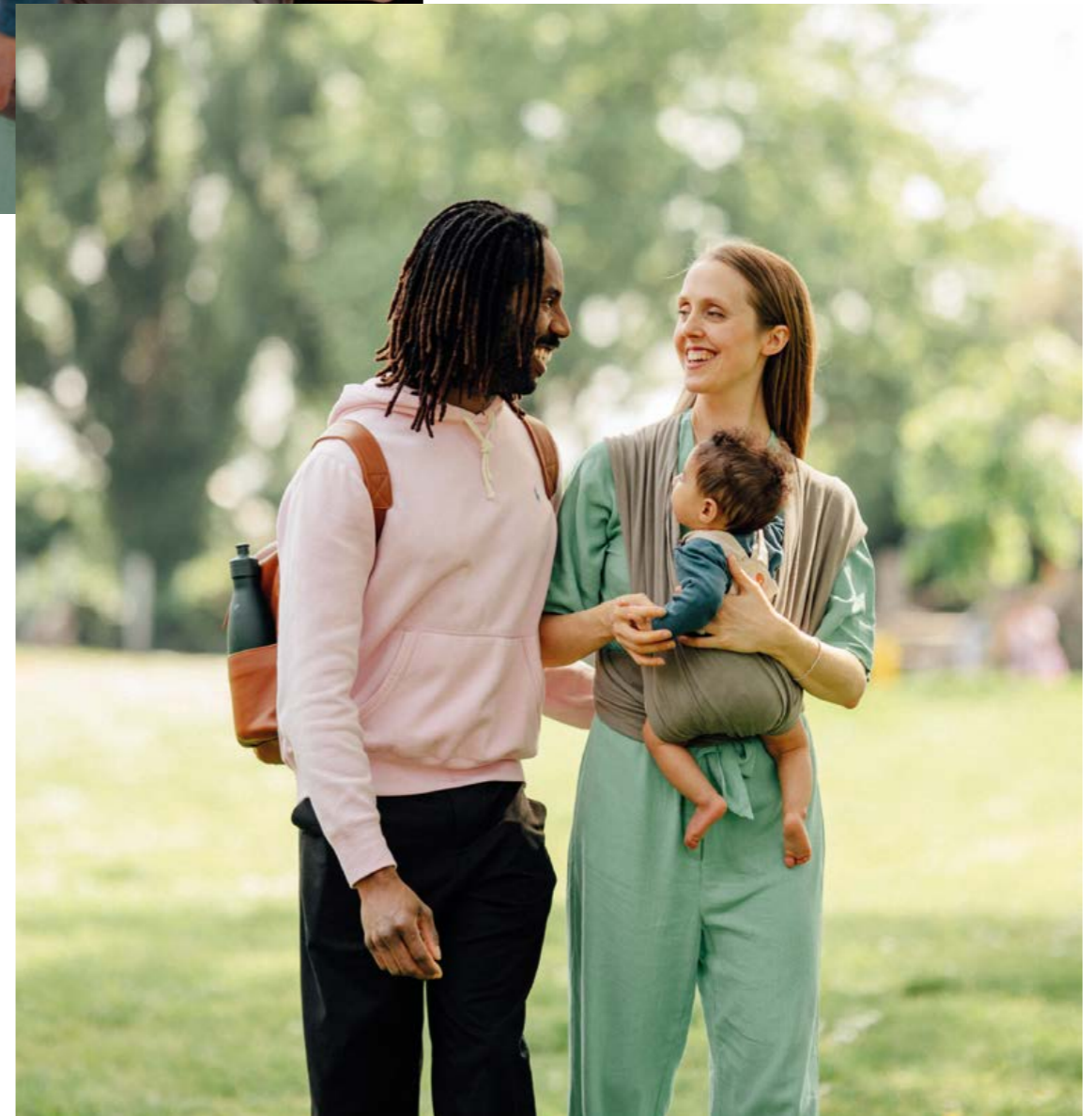
First-time buyers, London

Buying a first home, getting married and preparing for the arrival of a baby are all big life events and Raph and Jaye La Touche are experiencing all these milestones simultaneously.

With a moving date of 10th August and their nuptials already confirmed for 12th August, it's been a busy summer for the newly-weds who have bought a home through Shared Ownership at The Switch by Peabody New Homes in Wimbledon.

Raph explains: "We knew we were taking on a lot but couldn't wait to move in. It was actually brilliant timing as the process was smooth thanks to Peabody New Homes support. Getting married in Battersea and then coming back to our own home after made the day even more special."

Jaye adds "It's a huge relief to own a home now and I'm not missing sharing my kitchen with three other people one bit."





More than just a place to live

We at Peabody have a proud legacy of helping generations of homebuyers and residents find their place in thriving neighbourhoods, communities and homes for over 160 years.

The team at Peabody New Homes is dedicated to finding you a home that is more than just a place to live. A place you can call your own. A place to belong. A place that you're proud to call home.



Scan here to find out more

Find @PeabodyNewHomes on



Every care has been taken in the preparation of this brochure. The details contained herein are for guidance only and should not be relied upon as exactly describing any of the particular material illustrated or written by any order under the Consumer Protection from Unfair Trading Regulations 2008. This information does not constitute a contract, part of a contract or warranty. The developer operates a programme of continuous product development. Features, internal and external, may vary from time to time and may differ from those shown in the brochure. Computer generated images and photography used within this brochure are indicative only. The Verdean is a marketing name and may not form part of the postal address for these properties. Home layouts provide approximate measurements only. Dimensions, which are taken from the indicated points of measurement, are for guidance only and are not intended to be used for carpet sizes, appliance space or items of furniture. Areas are provided as gross internal areas and may vary. Bathroom and Kitchen layouts are indicative only and are subject to change. The information contained within this document does not constitute part of any offer, contract or warranty. Whilst the plans have been prepared with all due care for the convenience of the intending purchaser, the information contained herein is a preliminary guide only. February 2025.



BUILDING HISTORY

Formed over 160 years ago by the American financier and philanthropist George Peabody, Peabody is one of the UK's oldest and largest housing associations responsible for more than 107,000 homes and around 220,000 residents across London and the Home Counties.



CUSTOMER FOCUS

Whether it's your first or forever home, we know that buying a new place can be a demanding time. Our Sales Team is committed to guiding you through the process and helping you every step of the way. Rated "Excellent" on Trustpilot, we're proud to offer you a service that makes a difference.



QUALITY, DESIGN & SUSTAINABILITY

Peabody's reputation is one of the most respected in the housing industry, renowned for quality, multi-award-winning and innovative design. We work with industry experts and continually monitor quality throughout the building process to reduce our impact on climate change, lessen our carbon footprint and create properties people are proud to call home.

Our Greener Homes Programme is our commitment to the environment and will aim to minimise our impact on the planet and support thriving neighbourhoods.



SOCIAL IMPACT

Our social purpose is why we exist. We re-invest the surplus made from the sale of our homes to provide more homes and services to those who need it most. We deliver services that support customers and the wider communities that we work in, and invest in local projects through our Community Foundation.





peabodynewhomes.co.uk/TheVerdean