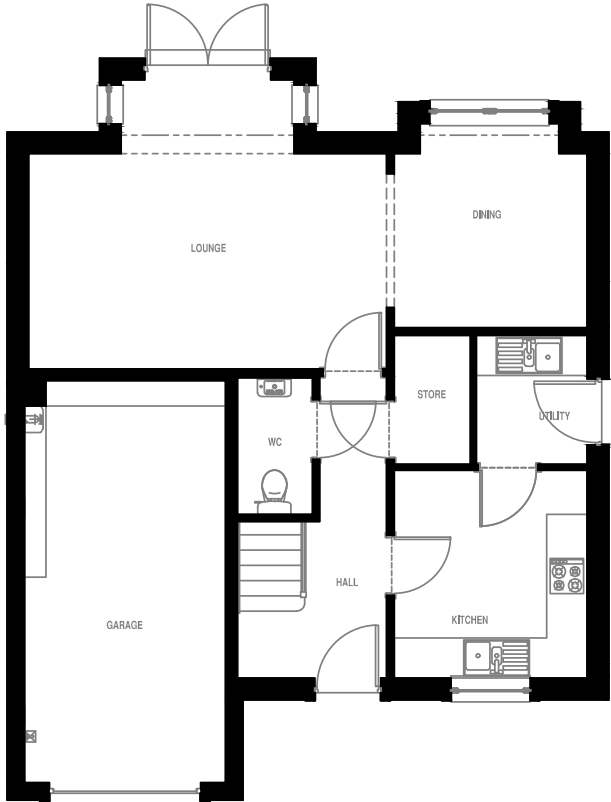


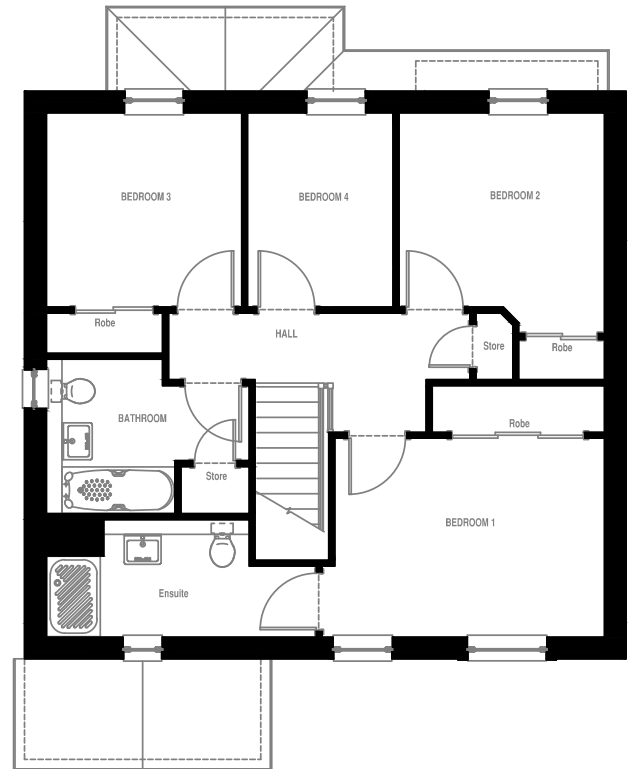
WEMYSS 16

4-Bedroom Detached Home with Garage

GROUND FLOOR



FIRST FLOOR



GROUND FLOOR

Lounge	5.34m x 3.21m	17'6" x 10'6"
Kitchen	2.88m x 3.10m	9'5" x 10'2"
Dining	2.88m x 3.05m	9'5" x 10'0"
Utility	1.65m x 1.93m	5'5" x 6'4"
Toilet	1.12m x 2.06m	3'8" x 6'9"
Garage	3.00m x 6.00m	9'10" x 19'8"

FIRST FLOOR

Bedroom 1	4.03m x 2.97m	13'3" x 9'9"
En Suite 1	4.02m x 1.75m	13'2" x 5'9"
Bedroom 2	3.07m x 2.90m	10'1" x 9'6"
Bedroom 3	2.92m x 2.90m	9'7" x 9'6"
Bedroom 4	2.17m x 2.90m	7'1" x 9'6"
Bathroom	3.03m x 2.30m	9'11" x 7'7"

The details contained on this floor plan has been prepared for the convenience of intending purchasers. The information is for guidance only. The Company reserves the right to amend or vary specification. Nothing in this brochure shall constitute or form any part of a contract.

All photographs and illustrations on this insert are for illustrative purposes only. Muir Homes 2019.