

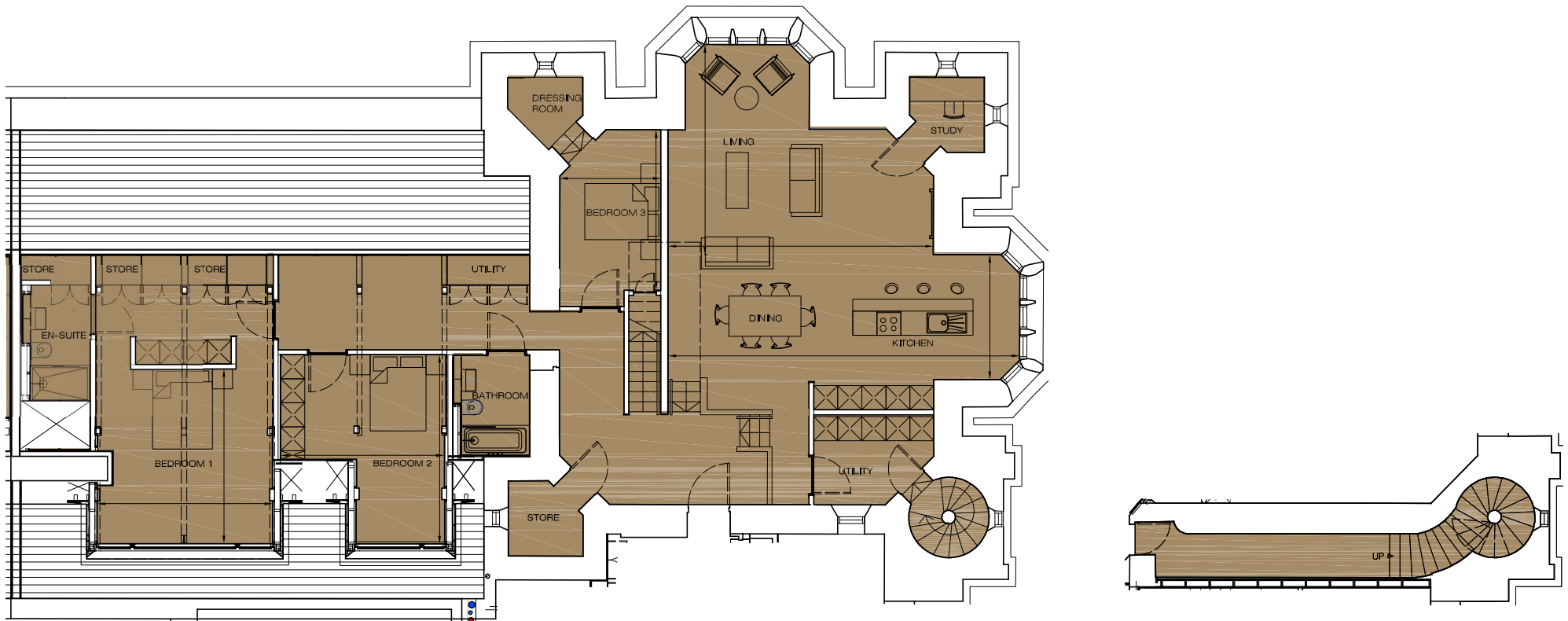
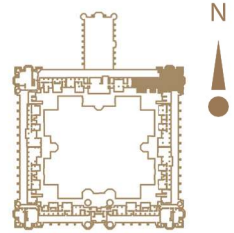
# THE PLAYFAIR

AT DONALDSON'S

## Floorplan - Plot S06 NOT TO SCALE

3 Bedroom Apartment | Second floor | Total area 2540 sq ft (236 sq m)

Living	21' 0" x 16' 11"	(6.62m x 5.24m)	Bedroom 1	14' 3" x 14' 3"	(4.36m x 4.36m)
Dining/Kitchen	27' 9" x 10' 3"	(8.77m x 3.12m)	Bedroom 2	15' 5" x 13' 5"	(4.72m x 4.09m)
Living (Tower)	20' 1" x 11' 12"	(6.14m x 3.65m)	Bedroom 3	13' 1" x 8' 3"	(4.00m x 2.52m)



0131 610 6000

e:sales@cityandcountry.co.uk | w:www.cityandcountry.co.uk

CITY & COUNTRY

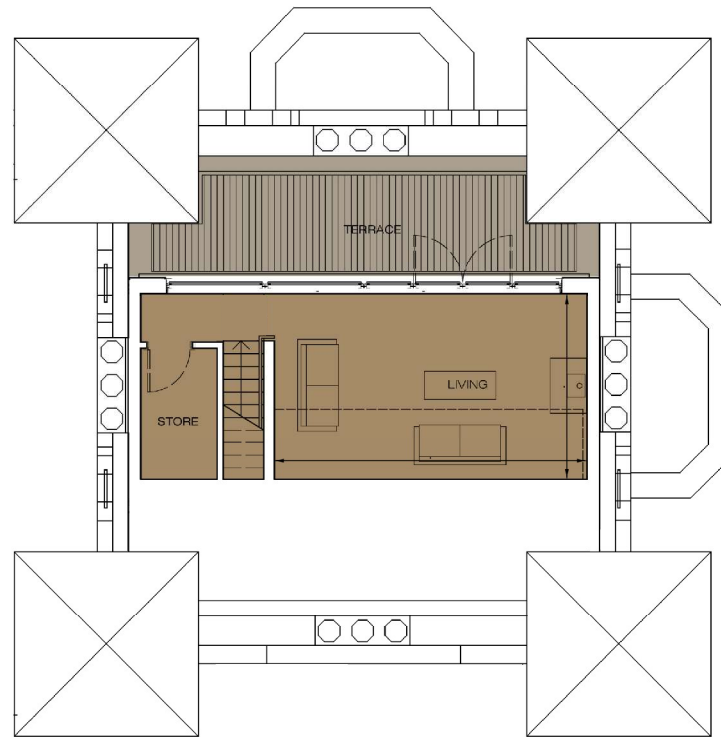
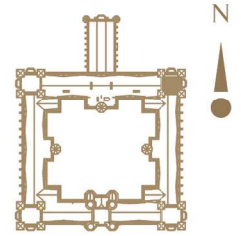
The information in this document is intended as a guide only and is subject to change without prior notice. Accordingly, due to the City & Country policy of continual improvement, the finished product may vary from the information provided and City & Country reserves the right to amend the specification. All dimensions stated are approximate only with maximum dimensions and may alter through the construction phase and with interior finishes. You are therefore advised not to order any carpets, appliances or other goods which depend upon accurate dimensions before carrying out a check measure within your reserved property. December 2017.

THE  
**PLAYFAIR**

AT DONALDSON'S

Floorplan - Plot S06 NOT TO SCALE

3 Bedroom Apartment | Second floor



FLAT S06 - THIRD FLOOR PLAN

0131 610 6000

e: [sales@cityandcountry.co.uk](mailto:sales@cityandcountry.co.uk) | w: [www.cityandcountry.co.uk](http://www.cityandcountry.co.uk)

CITY & COUNTRY

The information in this document is intended as a guide only and is subject to change without prior notice. Accordingly, due to the City & Country policy of continual improvement, the finished product may vary from the information provided and City & Country reserves the right to amend the specification. All dimensions stated are approximate only with maximum dimensions and may alter through the construction phase and with interior finishes. You are therefore advised not to order any carpets, appliances or other goods which depend upon accurate dimensions before carrying out a check measure within your reserved property. December 2017.