



# The Highgate

*Five Bedroom Home*





# The Highgate

*Five Bedroom Home*

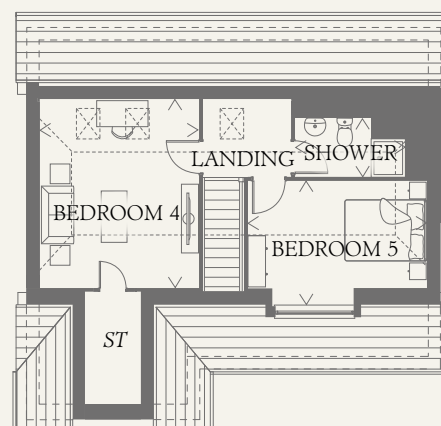
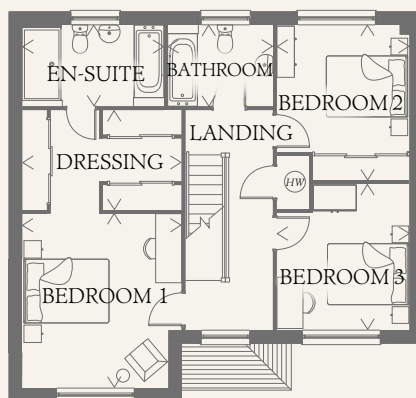
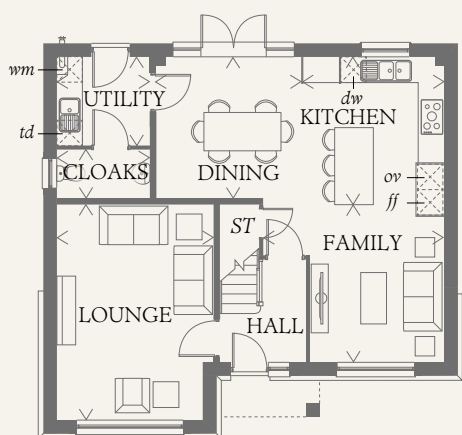




# The Highgate

## Five Bedroom Home

Beautifully balanced design means that despite its substantial, five bedroom size, it retains a sense of proportion and aesthetic integrity. Once inside, you'll discover a home that enhances the living experience for you, your family and all who visit.



### GROUND FLOOR

LOUNGE	16'6" x 12'0"	5.03 x 3.66 m
KITCHEN	13'2" x 9'4"	4.01 x 2.82 m
FAMILY	10'4" x 10'2"	3.14 x 3.11 m
DINING	12'8" x 10'10"	3.87 x 3.29 m
UTILITY	7'3" x 6'9"	2.22 x 2.07 m
CLOAKS	7'3" x 3'8"	2.22 x 1.13 m

### FIRST FLOOR

BEDROOM 1	13'4" x 12'2"	4.07 x 3.72 m
DRESSING	12'2" x 7'8"	3.72 x 2.33 m
EN-SUITE	10'10" x 6'3"	3.30 x 1.90 m
BEDROOM 2	11'11" x 10'2"	3.62 x 3.10 m
BEDROOM 3	11'2" x 10'2"	3.41 x 3.10 m
BATHROOM	8'0" x 6'3"	2.45 x 1.90 m

### SECOND FLOOR

BEDROOM 4	14'6" x 12'2"	4.41 x 3.72 m
BEDROOM 5	13'6" x 12'6"	4.18 x 3.81 m
SHOWER	8'5" x 4'6"	2.56 x 1.38 m

### CONSUMER CODE FOR HOME BUILDERS

[www.consumercode.co.uk](http://www.consumercode.co.uk)

Customers should note this illustration is an example of the Highgate house type. All dimensions indicated are approximate and the furniture layout is for illustrative purposes only. Homes may be 'handed' (mirror image) versions of the illustrations, and may be detached, semi-detached or terraced. Materials used may differ from plot to plot including render and roof tile colours. Detailed plans and specifications are available for inspection for each plot at our Sales Centre during working hours and customers must check their individual specifications prior to making a reservation.

#### KEY

- Hob
- Oven
- Fridge/freezer
- Washing machine space
- Dishwasher space
- Tumble dryer space
- Hot water cylinder
- Cupboard

< Denotes where dimensions are taken from. All wardrobes are subject to site specification. Please see Sales Consultant for further details.

THINK\_EF\_HIG5\_DM.7

