



# The Oxford Lifestyle

*Three Bedroom Home*





# The Oxford Lifestyle

*Three Bedroom Home*

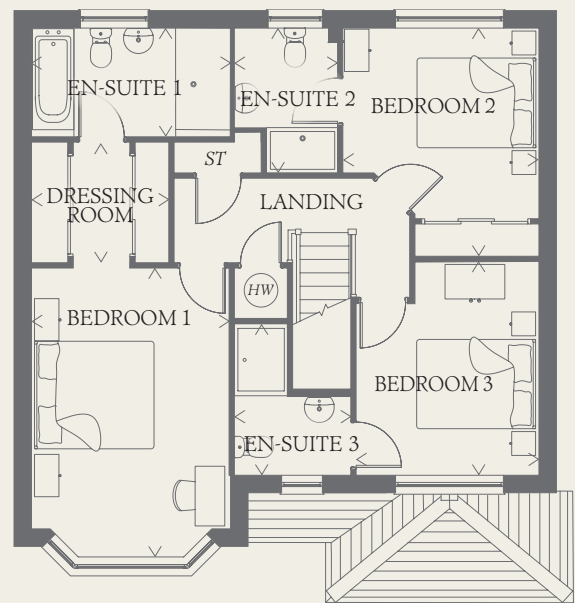
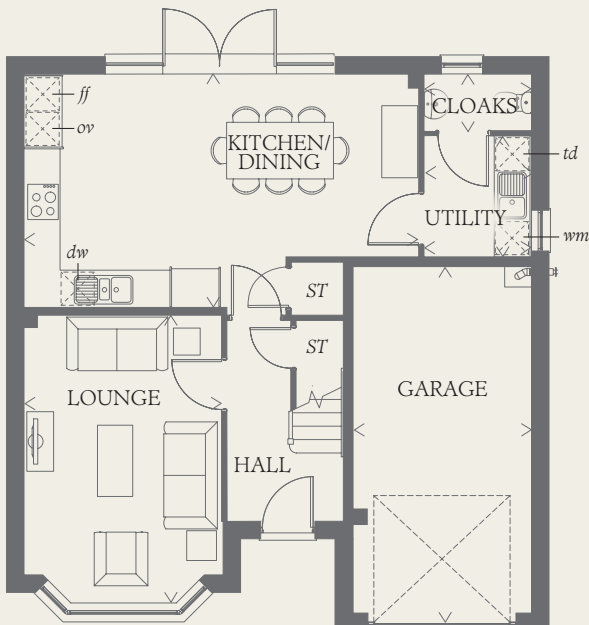




# The Oxford Lifestyle

## Three Bedroom Home

The Oxford Lifestyle may look very traditional on the outside, but inside it's anything but, with a stunning specification that includes a magnificent master bedroom suite and two further double bedrooms each with their own en-suite bathroom.



### GROUND FLOOR

LOUNGE	15'9" x 10'10"	4.80 x 3.29 m
KITCHEN/ DINING	21'8" x 12'9"	6.60 x 3.88 m
UTILITY	6'8" x 5'10"	2.02 x 1.78 m
CLOAKS	5'10" x 3'1"	1.78 x 0.94 m
GARAGE	19'8" x 9'10"	6.00 x 3.00 m

### FIRST FLOOR

BEDROOM 1	15'10" x 10'10"	4.82 x 3.29 m
DRESSING	7'6" x 6'8"	2.28 x 2.03 m
EN-SUITE 1	10'10" x 5'11"	3.29 x 1.80 m
BEDROOM 2	12'7" x 10'9"	3.84 x 3.27 m
EN-SUITE 2	7'11" x 5'8"	2.41 x 1.73 m
BEDROOM 3	11'7" x 10'0"	3.52 x 3.05 m
EN-SUITE 3	8'3" x 6'5"	2.51 x 1.96 m

**CONSUMER  
CODE FOR  
HOME BUILDERS**

[www.consumercode.co.uk](http://www.consumercode.co.uk)

Customers should note this illustration is an example of the Oxford Lifestyle house type. All dimensions indicated are approximate and the furniture layout is for illustrative purposes only. Homes may be 'handed' (mirror image) versions of the illustrations, and may be detached, semi-detached or terraced. Materials used may differ from plot to plot including render and roof tile colours. Detailed plans and specifications are available for inspection for each plot at our Sales Centre during working hours and customers must check their individual specifications prior to making a reservation.

#### KEY

Hob	Tumble dryer space
Oven	Hot water cylinder
Fridge/freezer	Cupboard
Washing machine space	
Dishwasher space	

< Denotes where dimensions are taken from. All wardrobes are subject to site specification. Please see Sales Consultant for further details.

THINK\_EF\_OXFOQ\_DM.3