



The Hexham End

Two Bedroom Home





The Hexham End

Two Bedroom Home

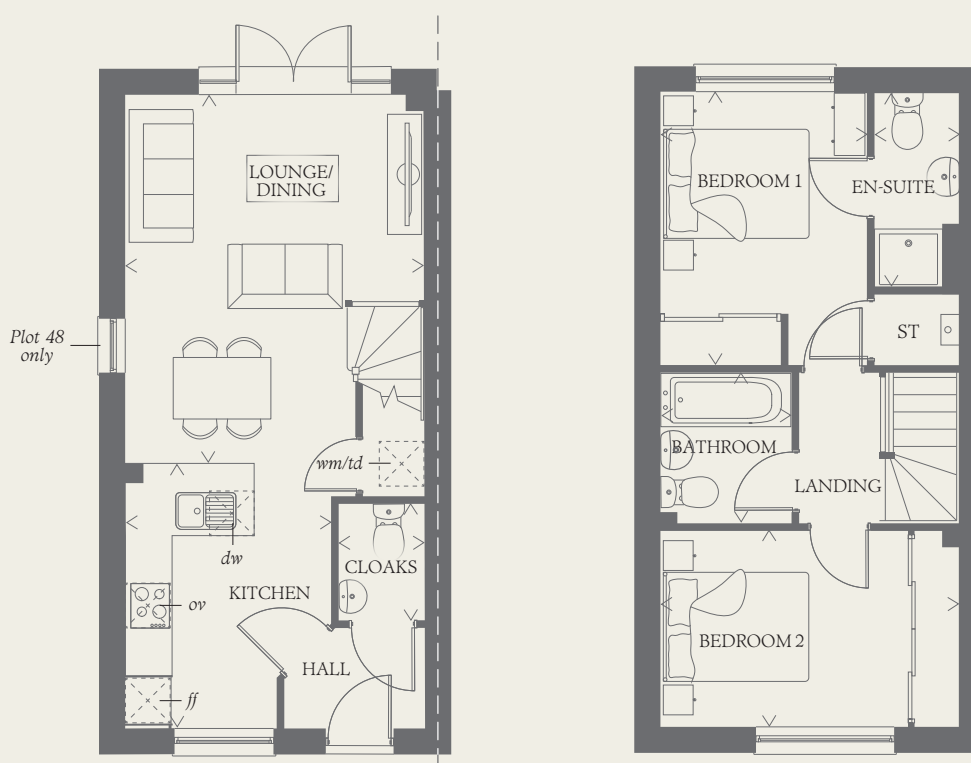




The Hexham End

Two Bedroom Home

A fantastic quality of life awaits you at The Hexham. This charming two-bedroom house offers generous open plan living space downstairs, making it the perfect environment in which to socialise with friends and family. There are two bathrooms to the first floor to ensure the utmost convenience for all.



GROUND FLOOR

LOUNGE/ DINING	15'9" x 12'8"	4.80 x 3.87 m
KITCHEN	11'3" x 8'9"	3.42 x 2.67 m
CLOAKS	5'0" x 3'8"	1.52 x 1.11 m

FIRST FLOOR

BEDROOM 1	11'8" x 8'10"	3.55 x 2.68 m
EN-SUITE	8'4" x 3'7"	2.54 x 1.10 m
BEDROOM 2	12'8" x 8'4"	3.87 x 2.55 m
BATHROOM	6'6" x 5'7"	1.97 x 1.71 m

CONSUMER CODE FOR HOME BUILDERS

www.consumercode.co.uk

Customers should note this illustration is an example of the Hexham house type. All dimensions indicated are approximate and the furniture layout is for illustrative purposes only. Homes may be 'handed' (mirror image) versions of the illustrations, and may be detached, semi-detached or terraced. Materials used may differ from plot to plot including render and roof tile colours. Detailed plans and specifications are available for inspection for each plot at our Sales Centre during working hours and customers must check their individual specifications prior to making a reservation.

KEY

	Hob	<i>td</i>	Tumble dryer space
<i>ov</i>	Oven	<i>ST</i>	Cupboard
<i>ff</i>	Fridge/freezer		
<i>wm</i>	Washing machine space		
<i>dw</i>	Dishwasher space		

< Denotes where dimensions are taken from. All wardrobes are subject to site specification. Please see Sales Consultant for further details.

EF_HEXH_EM.1 | AF 1183612

