



# The Shrewsbury

*Four Bedroom Home*





# The Shrewsbury

*Four Bedroom Home*

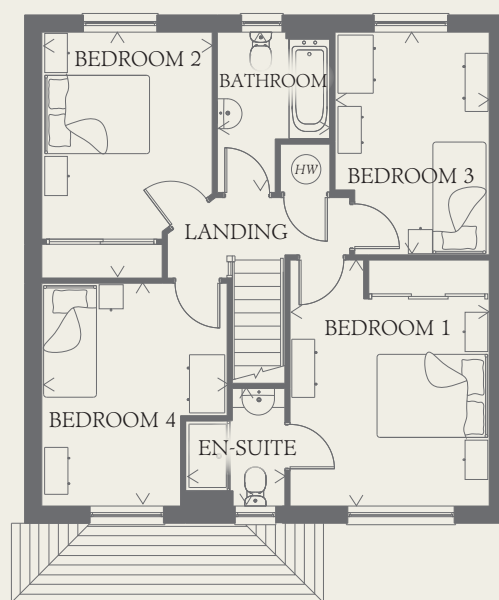
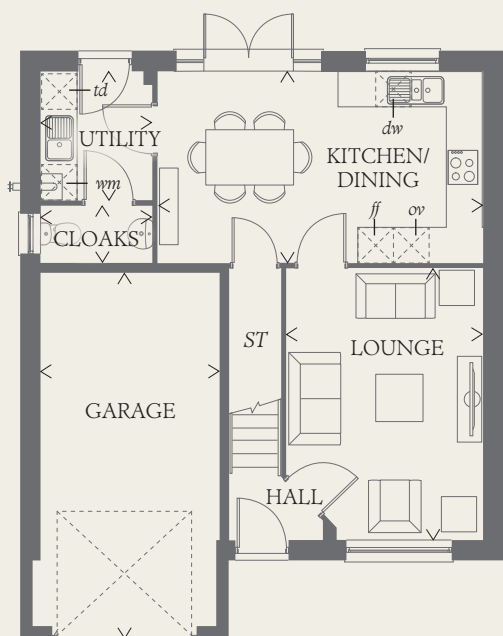




# The Shrewsbury

## Four Bedroom Home

The perfect home to provide a foundation for family life, the Shrewsbury is elegantly designed to enhance each detail of the home. A spacious layout provides four bedrooms, three of them doubles, a well-planned kitchen/dining room and a comfortable lounge in which to relax.



### GROUND FLOOR

LOUNGE	15'3" x 11'1"	4.65 x 3.37 m
KITCHEN/ DINING	18'4" x 10'9"	5.58 x 3.28 m
UTILITY	7'2" x 6'3"	2.14 x 1.90 m
CLOAKS	6'3" x 3'5"	1.90 x 1.05 m
GARAGE	19'7" x 10'1"	5.97 x 3.08 m

### FIRST FLOOR

BEDROOM 1	13'8" x 11'1"	4.16 x 3.37 m
EN-SUITE	6'6" x 5'7"	1.98 x 1.69 m
BEDROOM 2	13'8" x 9'5"	4.16 x 2.88 m
BEDROOM 3	12'4" x 8'6"	3.77 x 2.60 m
BEDROOM 4	12'4" x 10'3"	3.77 x 3.13 m
BATHROOM	8'10" x 6'4"	2.70 x 1.92 m

#### CONSUMER CODE FOR HOME BUILDERS

[www.consumercode.co.uk](http://www.consumercode.co.uk)

Customers should note this illustration is an example of the Shrewsbury house type. All dimensions indicated are approximate and the furniture layout is for illustrative purposes only. Homes may be 'handed' (mirror image) versions of the illustrations, and may be detached, semi-detached or terraced. Materials used may differ from plot to plot including render and roof tile colours. Detailed plans and specifications are available for inspection for each plot at our Sales Centre during working hours and customers must check their individual specifications prior to making a reservation.

#### KEY

- Hob
- Oven
- Fridge/freezer
- Washing machine space
- Dishwasher space
- Tumble dryer space
- Hot water cylinder
- Cupboard

< Denotes where dimensions are taken from. All wardrobes are subject to site specification. Please see Sales Consultant for further details.

THINK\_WF\_SHRB\_DM.1.0

