


Wain
HOMES



A place that lets you be you.
That says everything about you.
That feels good, feels right.
Where life can be beautifully imperfect.
And you love every moment of it.

YOUR KIND OF *perfect*

THE PADDOCKS DEVELOPMENT PLAN

- 2 Bedroom Homes**
Bell (BE)
- 3 Bedroom Homes**
Baird (B)
Brunswick (BR)
Claydon Side (CLs)
Trevithick (TR)
- 4 Bedroom Homes**
Egerton (EG)
Eton (E)
Haversham (H)
Jenner (J)
Nelson (NL)
Newton (N)
Oxford (OX)
Shakespeare (SK)
Whitmoor (WH)
Winchester (WN)
Wordsworth (W)
Wren (WR)
- 5 Bedroom Homes**
Cavendish (C)
- Apartments**
Chinley (CH)
Oakmere (OK)
- * Affordable Homes



THE PADDOCKS SPECIFICATION

CAVENDISH | EGERTON | ETON | HAVERSHAM | NEWTON | OXFORD
SHAKESPEARE | WINCHESTER | WORDSWORTH

KITCHENS

- Luxury Fitted Kitchens from our Standard Range with Soft Close Mechanisms in a Choice of Finishes*
- Laminated Worktops to Kitchen and Utility with Matching Upstands in a Choice of Finishes*
- 1 ½ Bowl Inset Stainless Steel Sink & Tap to the Kitchen
- Single Bowl Stainless Steel Sink & Tap to the Utility
- Electrolux Stainless Steel Double Oven
- Electrolux Stainless Steel 4 Ring Gas Hob with Silver Glass Splashback and Extractor Hood
- Electrolux Integrated Fridge Freezer

BATHROOMS

- Roca Debba Sanitaryware in White with Full Pedestals and Soft Close Seats
- Roca Seville Bath
- Methven Insignia Brassware
- Methven Kiri Cool to Touch Thermostatic Shower with Satinjet Handset in Shower Enclosures
- Roman Haven Shower Enclosures
- Bathrooms to be Half Tiled throughout with a Choice from our Porcelanosa Standard Range*
- En-Suites to be Half Tiled to Sanitaryware walls with a Choice from our Porcelanosa Standard Range*
- Shower Enclosures to be Fully Tiled with a Choice from our Porcelanosa Standard Range*
- Splashback Tiling behind the Sink in Cloakroom with a Choice from our Porcelanosa Standard Range*
- Chrome Heated Towel Rail to Bathroom and En-Suites
- Chrome Downlights to Bathrooms and En-Suites

HEATING SYSTEM

- Gas Central Heating with High Efficiency Boiler and Panel Radiators
- Honeywell T6 Smart Thermostat

OTHER INTERNAL FEATURES

- All Ceilings to be Skim Finished and Painted White
- All Walls to be Skim Finished and Painted Soft Cream
- All Woodwork to be Finished in White Satinwood
- Staircase, including Newel Posts and Spindles to be Finished in White Satinwood
- All Handrails and Newel Caps to be Finished in Oak
- Vertical 5 Panel Internal Doors to be Finished in White Satinwood with Chrome Effect Door Furniture
- Ultrafast Hard Wired Fibre Broadband **
- White Sockets and Switches Throughout
- Television Aerial Socket to Lounge
- Telephone Point to Lounge
- Hard Wired Smoke Detectors with Battery Backup

EXTERNAL FEATURES

- Photovoltaic Solar Panels ^
- White PVCu Windows and Rear/Side/French Doors
- White PVCu Fascias and Soffits
- Black Rainwater Goods
- Black Composite Front Door
- External Lights to Front
- 7.4kW Car Charging Point
- Power and Lighting to all Garages
- White Garage Doors
- Gardens Landscaped to Front
- Gardens to Rear Rotavated
- 1.8m Close Boarded Divisional Fencing to Rear Garden^

WARRANTIES

- 10 Year NHBC Buildmark Warranty
- 2 Year Wain Homes Warranty

* Upgraded Choices available **Ultrafast Fibre is the latest in broadband technology that sees your broadband speeds faster than ever before – the next generation of internet, as fibre optic technology evolves, you'll already have everything you need in your property to get the benefits. Please note these services may be not fully active at completion stage until the relevant works have been completed by the service provider. ^Unless stipulated otherwise on the working drawings.

THE PADDOCKS SPECIFICATION

BAIRD | BELL | BRUNSWICK | CLAYDON | JENNER | NELSON | TREVITHICK

KITCHENS

- Luxury Fitted Kitchens from our Standard Range with Soft Close Mechanisms in a Choice of Finishes*
- Laminated Worktops to Kitchen with Matching Upstands in a Choice of Finishes*
- 1 ½ Bowl Inset Stainless Steel Sink & Tap to the Kitchen
- Electrolux Stainless Steel Single Oven
- Electrolux Stainless Steel 4 Ring Gas Hob with Silver Glass Splashback and Stainless Steel Extractor Hood
- Electrolux Integrated Fridge Freezer (4 bedroom homes only)

BATHROOMS

- Roca Debba Sanitaryware in White with Full Pedestals and Soft Close Seats
- Roca Seville Bath
- Methven Insignia Brassware
- Methven Kiri Cool to Touch Thermostatic Shower with Satinjet Handset to En-Suites or over Bath if no En-Suite
- Roman Haven Shower Enclosures to En-Suites
- Bathrooms to be Half Tiled around the Bath and have a Splashback behind the Sink with a Choice from our Porcelanosa Standard Range*
- Shower Screen and Full Height Tiling around the Bath with a Choice of Tiles from our Porcelanosa Standard Range* if no En-Suite
- Shower Enclosures in En-Suites to be Fully Tiled and a Splashback behind the Sink with a Choice from our Porcelanosa Standard Range*
- Splashback Tiling behind the Sink in Cloakroom with a Choice from our Porcelanosa Standard Range*
- Chrome Heated Towel Rail to Bathroom and En-Suites

HEATING SYSTEM

- Gas Central Heating with High Efficiency Boiler and Panel Radiators
- Honeywell T6 Smart Thermostat

OTHER INTERNAL FEATURES

- All Ceilings to be Skim Finished and Painted White
- All Walls to be Skim Finished and Painted Soft Cream
- All Woodwork to be Finished in White Satinwood
- Staircase, including Newel Posts, Handrails, Newel Caps and Spindles to be Finished in White Satinwood
- Vertical 5 Panel Internal Doors to be Finished in White Satinwood with Chrome Effect Door Furniture
- Ultrafast Hard Wired Fibre Broadband**
- White Sockets and Switches Throughout
- Television Aerial Socket to Lounge
- Telephone Point to Lounge
- Hard Wired Smoke Detectors with Battery Backup

EXTERNAL FEATURES

- Photovoltaic Solar Panels^
- White PVCu Windows and Rear/Side/French Doors
- White PVCu Fascias and Soffits
- Black Rainwater Goods
- Black Composite Front Door
- External Light to Front
- 7.4kW Car Charging Point
- Power and Lighting to all Garages
- White Garage Doors
- Gardens Landscaped to Front
- Gardens to Rear Rotavated
- 1.8m Close Boarded Divisional Fencing to Rear Garden^

WARRANTIES

- 10 Year NHBC Buildmark Warranty
- 2 Year Wain Homes Warranty

* Upgraded Choices available **Ultrafast Fibre is the latest in broadband technology that sees your broadband speeds faster than ever before – the next generation of internet, as fibre optic technology evolves, you'll already have everything you need in your property to get the benefits. Please note these services may be not fully active at completion stage until the relevant works have been completed by the service provider. ^Unless stipulated otherwise on the working drawings.

THE PADDOCKS SPECIFICATION

AFFORDABLE HOMES

KITCHENS

- Luxury Fitted Kitchens from our Standard Range with Soft Close Mechanisms in a Choice of Finishes**
- Laminated Worktops to Kitchen with Matching Upstands in a Choice of Finishes*
- 1 ½ Bowl Inset Stainless Steel Sink & Tap to the Kitchen
- Electrolux Stainless Steel Single Oven
- Electrolux Stainless Steel 4 Ring Gas Hob with Silver Glass Splashback and Stainless Steel Extractor Hood (Houses only)
- Electrolux 4 Ring Ceramic Hob (Apartments only)
- Chrome Sockets and Switches to Kitchen and Adjoining Open Plan Areas

BATHROOMS

- Roca Havana Sanitaryware in White
- Methven Deva Brassware
- Aqualisa Electric Shower to En-Suites or over Bath if no En-Suite
- Roman Haven Shower Enclosures to En-Suites
- Bathrooms to be Half Tiled around the Bath and have a Splashback behind the Sink with a Choice from our Porcelanosa Standard Range*
- Shower Screen and Full Height Tiling around the Bath with a Choice of Tiles from our Porcelanosa Standard Range* if no En-Suite.
- Shower Enclosures in En-Suites to be Fully Tiled and a Splashback behind the Sink with a Choice from our Porcelanosa Standard Range*
- Splashback Tiling behind the Sink in Cloakroom with a Choice from our Porcelanosa Standard Range*

HEATING SYSTEM

- Gas Central Heating with High Efficiency Boiler and Panel Radiators
- Honeywell T6 Smart Thermostat

OTHER INTERNAL FEATURES

- All Ceilings to be Skim Finished and Painted White
- All Walls to be Skim Finished and Painted Soft Cream
- All Woodwork to be Finished in White Satinwood
- Staircase, including Newel Posts, Handrails, Newel Caps and Spindles to be Finished in White Satinwood
- Vertical 5 Panel Internal Doors to be Finished in White Satinwood with Chrome Effect Door Furniture
- Ultrafast Hard Wired Fibre Broadband**
- White Sockets and Switches Throughout
- Television Aerial Socket to Lounge
- Telephone Point to Lounge
- Hard Wired Smoke Detectors with Battery Backup

EXTERNAL FEATURES

- Photovoltaic Solar Panels^
- White PVCu Windows and Rear/Side/French Doors
- White PVCu Fascias and Soffits
- Black Rainwater Goods
- Black Composite Front Door
- External Light to Front
- 7.4kW Car Charging Point
- Gardens Landscaped to Front
- Gardens to Rear Rotavated
- 1.8m Close Boarded Divisional Fencing to Rear Garden^

WARRANTIES

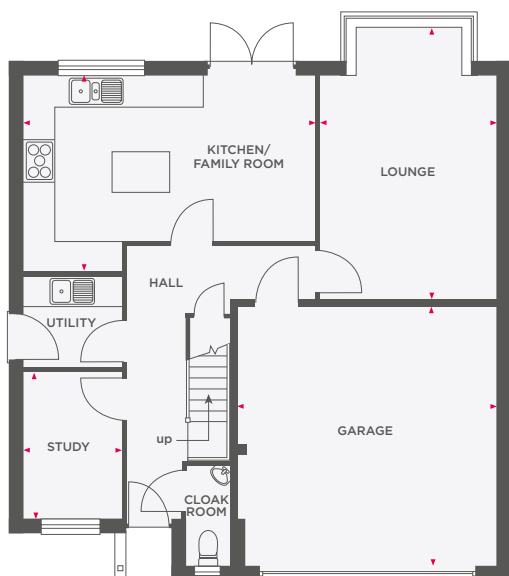
- 10 Year NHBC Buildmark Warranty
- 2 Year Wain Homes Warranty

* Upgraded Choices available **Ultrafast Fibre is the latest in broadband technology that sees your broadband speeds faster than ever before – the next generation of internet, as fibre optic technology evolves, you'll already have everything you need in your property to get the benefits. Please note these services may be not fully active at completion stage until the relevant works have been completed by the service provider. ^Unless stipulated otherwise on the working drawings.

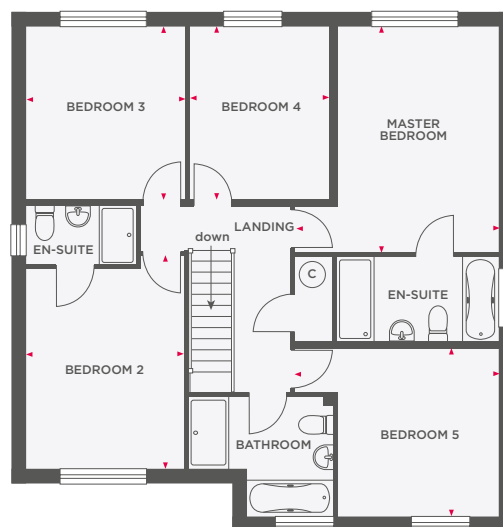


THE CAVENDISH

5 BEDROOM DETACHED HOME WITH INTEGRAL DOUBLE GARAGE



Lounge	5560 x 3657	18'2" x 12'0"
Kitchen/Family Room	5814 x 3954 (max)	19'0" x 12'11" (max)
Study	1927 x 2976	6'3" x 9'9"
Garage	5225 x 5275	17'1" x 17'3"



Master Bedroom	3996 x 4614 (max)	13'1" x 15'1" (max)
Bedroom 2	4343 x 3208	14'3" x 10'6"
Bedroom 3	3516 x 3238	11'6" x 10'7"
Bedroom 4	3516 x 2843	11'6" x 9'3"
Bedroom 5	3996 x 3429 (max)	13'1" x 11'3" (max)



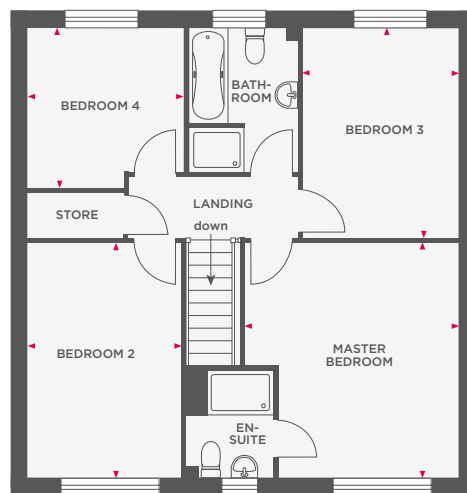
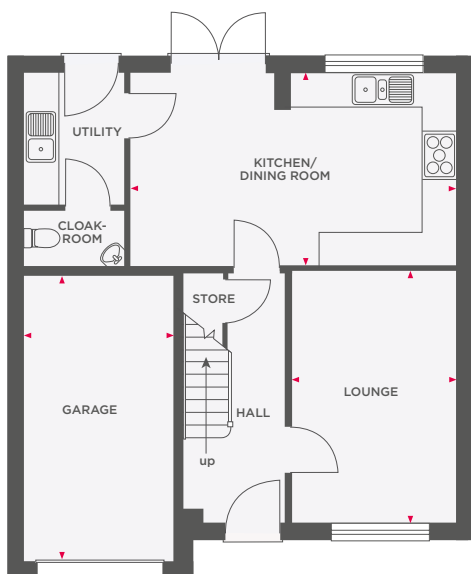
Wain Homes abides by the New Homes Quality Code, an independent industry code introduced to champion quality new homes and better consumer outcomes. Dimensions shown are internal finished dimensions which may vary as each home is built individually and the precise internal finishes may not always be the same. Please be aware that window and door positions could vary due to plot orientation. It is essential to view the working drawings with our Sales Executive for plot specific detail. Enquire for further information. Wain Homes Policy is continuous product and specification development. Every effort has been made to ensure the accuracy of the information provided in this leaflet at the date of publication but it may be subject to change without notice. Please consult with our Sales Executive to obtain the current specification. You should take appropriate steps to verify any information upon which you wish to rely. The sizes indicated are not intended to be used for carpet sizes, appliance spaces or items of furniture. Elevational treatments may vary to those shown. These particulars are intended for guidance only and their accuracy is not guaranteed. They do not constitute a contract, part of a contract or warranty. (September 2023)

Wain
HOMES



THE EGERTON

4 BEDROOM DETACHED HOME WITH INTEGRAL GARAGE



Lounge	3005 x 4488	9'10" x 14'8"
Kitchen/Dining Room	5896 x 3473	19'4" x 11'4"
Garage	2700 x 5150	8'10" x 16'10"

Master Bedroom	3849 x 4235	12'7" x 13'10"
Bedroom 2	2768 x 4235	9'1" x 13'10"
Bedroom 3	2809 x 3782	9'2" x 12'5"
Bedroom 4	2820 x 2901	9'3" x 9'6"



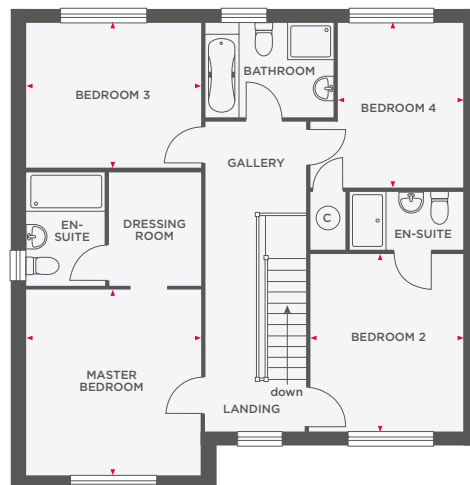
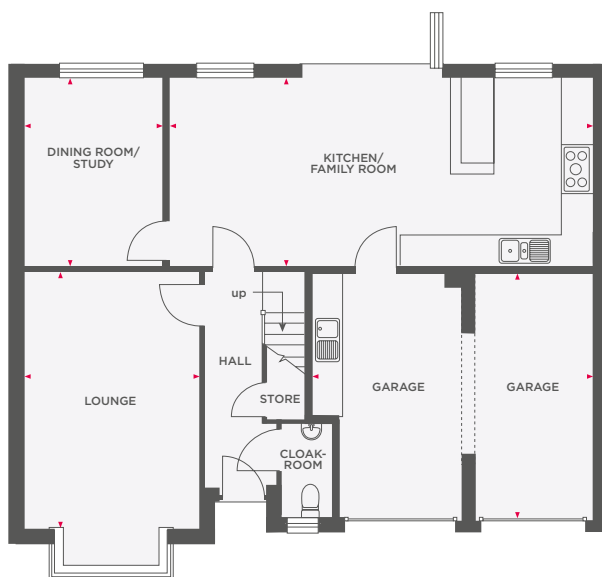
Wain Homes abides by the New Homes Quality Code, an independent industry code introduced to champion quality new homes and better consumer outcomes. Dimensions shown are internal finished dimensions which may vary as each home is built individually and the precise internal finishes may not always be the same. Please be aware that window and door positions could vary due to plot orientation. It is essential to view the working drawings with our Sales Executive for plot specific detail. Enquire for further information. Wain Homes Policy is continuous product and specification development. Every effort has been made to ensure the accuracy of the information provided in this leaflet at the date of publication but it may be subject to change without notice. Please consult with our Sales Executive to obtain the current specification. You should take appropriate steps to verify any information upon which you wish to rely. The sizes indicated are not intended to be used for carpet sizes, appliance spaces or items of furniture. Elevational treatments may vary to those shown. These particulars are intended for guidance only and their accuracy is not guaranteed. They do not constitute a contract, part of a contract or warranty. (September 2023)

Wain
HOMES



THE ETON

4 BEDROOM DETACHED HOME WITH INTEGRAL DOUBLE GARAGE



Lounge	3610 x 5290 (max)	11'10" x 17'4" (max)
Kitchen/Family Room	8740 x 3795	28'8" x 12'5"
Dining Room/Study	2859 x 3795	9'4" x 12'5"
Garage	5771 x 5066 (max)	18'11" x 16'7" (max)

Master Bedroom	3610 x 3813	11'10" x 12'6"
Bedroom 2	3043 x 3640	9'11" x 11'11"
Bedroom 3	3577 x 2922	11'8" x 9'7"
Bedroom 4	2515 x 3310	8'3" x 10'10"



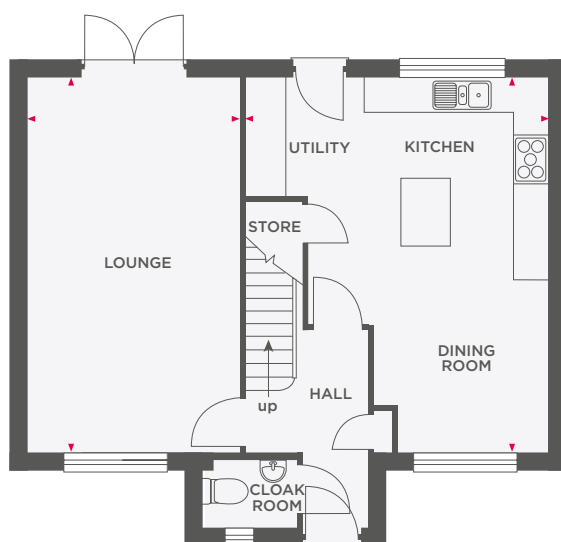
Wain Homes abides by the New Homes Quality Code, an independent industry code introduced to champion quality new homes and better consumer outcomes. Dimensions shown are internal finished dimensions which may vary as each home is built individually and the precise internal finishes may not always be the same. Please be aware that window and door positions could vary due to plot orientation. It is essential to view the working drawings with our Sales Executive for plot specific detail. Enquire for further information. Wain Homes Policy is continuous product and specification development. Every effort has been made to ensure the accuracy of the information provided in this leaflet at the date of publication but it may be subject to change without notice. Please consult with our Sales Executive to obtain the current specification. You should take appropriate steps to verify any information upon which you wish to rely. The sizes indicated are not intended to be used for carpet sizes, appliance spaces or items of furniture. Elevational treatments may vary to those shown. These particulars are intended for guidance only and their accuracy is not guaranteed. They do not constitute a contract, part of a contract or warranty. (September 2023)

Wain
HOMES

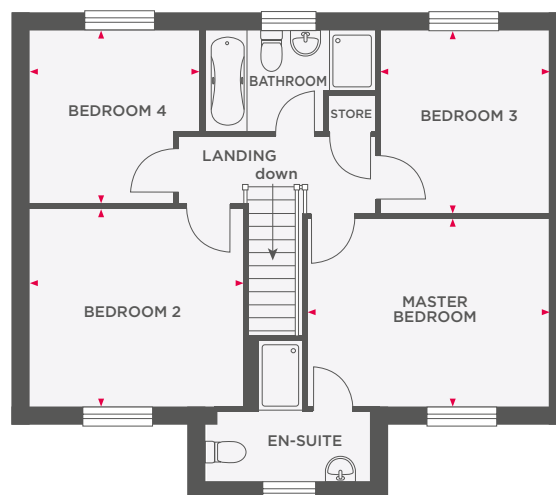


THE HAVERSHAM

4 BEDROOM DETACHED HOME WITH GARAGE



Lounge	3605 x 6423	11'9" x 21'0"
Kitchen/Utility/ Dining Room	5256 x 6423	17'2" x 21'0"



Master Bedroom	4183 x 3204	13'8" x 10'6"
Bedroom 2	3663 x 3377	12'0" x 11'0"
Bedroom 3	2898 x 3127	9'6" x 10'3"
Bedroom 4	2958 x 2955	9'8" x 9'8"



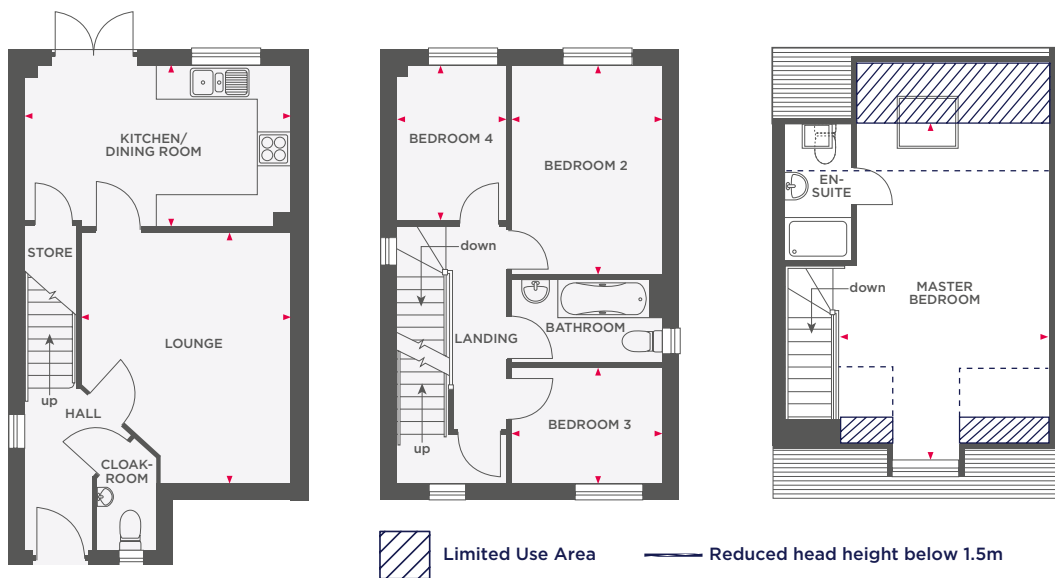
Wain Homes abides by the New Homes Quality Code, an independent industry code introduced to champion quality new homes and better consumer outcomes. Dimensions shown are internal finished dimensions which may vary as each home is built individually and the precise internal finishes may not always be the same. Please be aware that window and door positions could vary due to plot orientation. It is essential to view the working drawings with our Sales Executive for plot specific detail. Enquire for further information. Wain Homes Policy is continuous product and specification development. Every effort has been made to ensure the accuracy of the information provided in this leaflet at the date of publication but it may be subject to change without notice. Please consult with our Sales Executive to obtain the current specification. You should take appropriate steps to verify any information upon which you wish to rely. The sizes indicated are not intended to be used for carpet sizes, appliance spaces or items of furniture. Elevational treatments may vary to those shown. These particulars are intended for guidance only and their accuracy is not guaranteed. They do not constitute a contract, part of a contract or warranty. (September 2023)

**Wain
HOMES**



THE JENNER

4 BEDROOM HOME WITH GARAGE



Lounge	3875 x 4600 (max)	12'8" x 15'1" (max)
Kitchen/Dining Room	4845 x 2965 (max)	15'10" x 9'8" (max)

Bedroom 2	2755 x 3840	9'0" x 12'7"
Bedroom 3	2755 x 2100	9'0" x 6'10"
Bedroom 4	1995 x 2840	6'6" x 9'3"

Master Bedroom	3830 x 6450 (max)	12'6" x 20'10" (max)
----------------	-------------------	----------------------



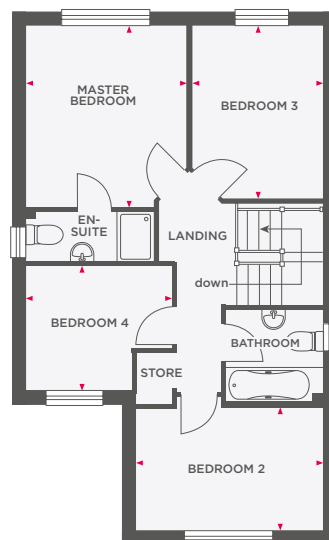
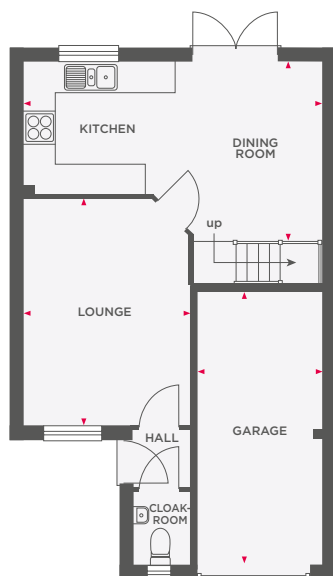
Wain Homes abides by the New Homes Quality Code, an independent industry code introduced to champion quality new homes and better consumer outcomes. Dimensions shown are internal finished dimensions which may vary as each home is built individually and the precise internal finishes may not always be the same. Please be aware that window and door positions could vary due to plot orientation. It is essential to view the working drawings with our Sales Executive for plot specific detail. Enquire for further information. Wain Homes Policy is continuous product and specification development. Every effort has been made to ensure the accuracy of the information provided in this leaflet at the date of publication but it may be subject to change without notice. Please consult with our Sales Executive to obtain the current specification. You should take appropriate steps to verify any information upon which you wish to rely. The sizes indicated are not intended to be used for carpet sizes, appliance spaces or items of furniture. Elevational treatments may vary to those shown. These particulars are intended for guidance only and their accuracy is not guaranteed. They do not constitute a contract, part of a contract or warranty. (September 2023)





THE NELSON

4 BEDROOM DETACHED HOME WITH INTEGRAL GARAGE



Lounge	3320 x 4490 (max)	10'10" x 14'8" (max)
Kitchen/Dining Room	5970 x 3700 (max)	19'7" x 12'1" (max)
Garage	2475 x 5660 (max)	8'1" x 18'6" (max)

Master Bedroom	3220 x 3600 (max)	10'6" x 11'9" (max)
Bedroom 2	3830 x 2550 (max)	12'6" x 8'4" (max)
Bedroom 3	2660 x 3420 (max)	8'8" x 11'2" (max)
Bedroom 4	2880 x 2420 (max)	9'5" x 7'11" (max)



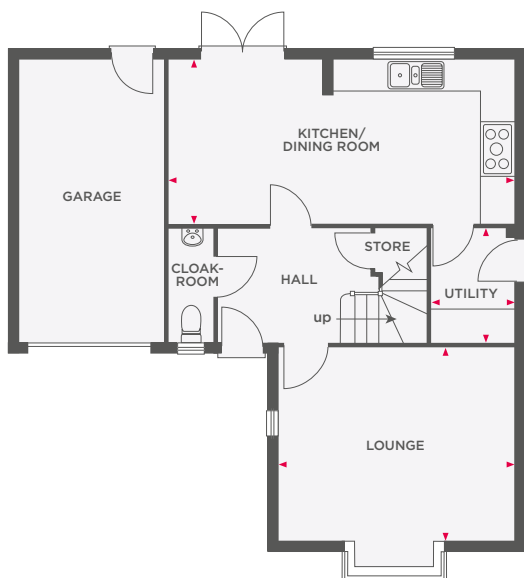
Wain Homes abides by the New Homes Quality Code, an independent industry code introduced to champion quality new homes and better consumer outcomes. Dimensions shown are internal finished dimensions which may vary as each home is built individually and the precise internal finishes may not always be the same. Please be aware that window and door positions could vary due to plot orientation. It is essential to view the working drawings with our Sales Executive for plot specific detail. Enquire for further information. Wain Homes Policy is continuous product and specification development. Every effort has been made to ensure the accuracy of the information provided in this leaflet at the date of publication but it may be subject to change without notice. Please consult with our Sales Executive to obtain the current specification. You should take appropriate steps to verify any information upon which you wish to rely. The sizes indicated are not intended to be used for carpet sizes, appliance spaces or items of furniture. Elevational treatments may vary to those shown. These particulars are intended for guidance only and their accuracy is not guaranteed. They do not constitute a contract, part of a contract or warranty. (September 2023)

Wain
HOMES

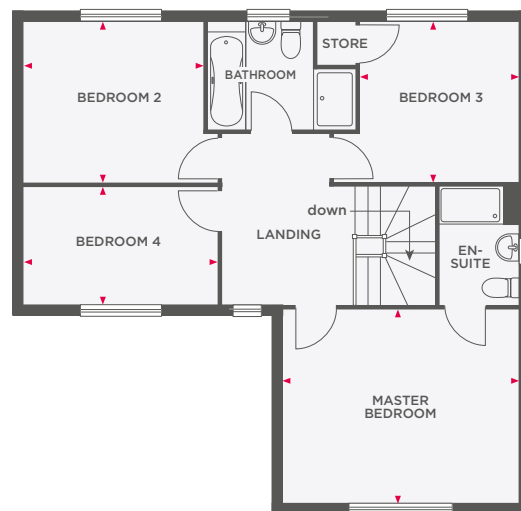


THE NEWTON

4 BEDROOM DETACHED HOME WITH INTEGRAL GARAGE



Lounge	4285 x 3562 (max)	14'0" x 11'8" (max)
Kitchen/Dining Room	6604 x 2947	21'8" x 9'8"
Utility	1585 x 2088	5'2" x 6'10"



Master Bedroom	4285 x 3619	14'0" x 11'10"
Bedroom 2	3215 x 2955	10'6" x 9'8"
Bedroom 3	3005 x 2989	9'10" x 9'9"
Bedroom 4	3710 x 2138	12'2" x 7'0"



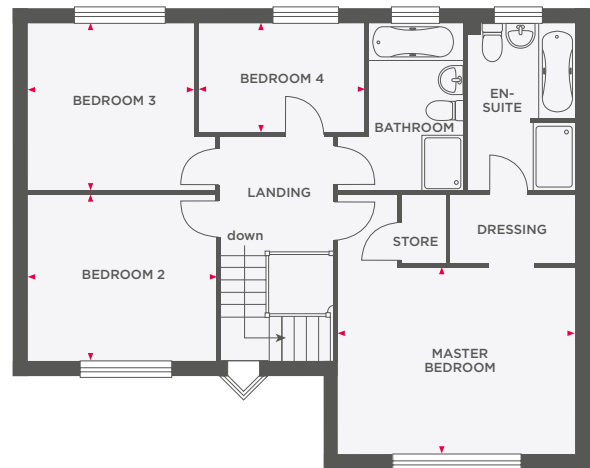
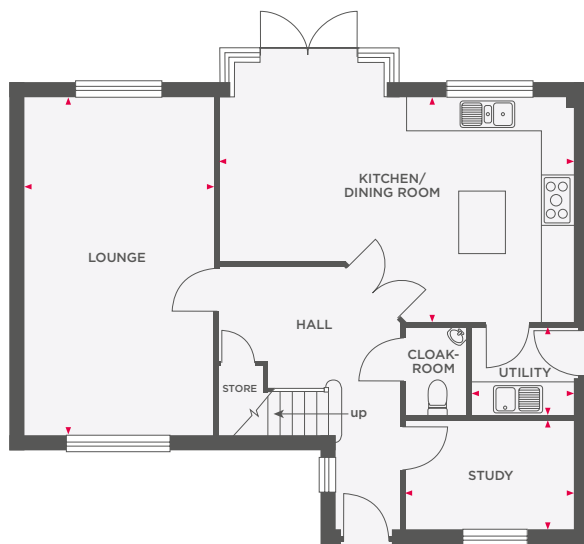
Wain Homes abides by the New Homes Quality Code, an independent industry code introduced to champion quality new homes and better consumer outcomes. Dimensions shown are internal finished dimensions which may vary as each home is built individually and the precise internal finishes may not always be the same. Please be aware that window and door positions could vary due to plot orientation. It is essential to view the working drawings with our Sales Executive for plot specific detail. Enquire for further information. Wain Homes Policy is continuous product and specification development. Every effort has been made to ensure the accuracy of the information provided in this leaflet at the date of publication but it may be subject to change without notice. Please consult with our Sales Executive to obtain the current specification. You should take appropriate steps to verify any information upon which you wish to rely. The sizes indicated are not intended to be used for carpet sizes, appliance spaces or items of furniture. Elevational treatments may vary to those shown. These particulars are intended for guidance only and their accuracy is not guaranteed. They do not constitute a contract, part of a contract or warranty. (June 2025)

Wain
HOMES



THE OXFORD

4 BEDROOM DETACHED HOME WITH DETACHED GARAGE



Lounge	3400 x 6085	11'1" x 19'11"
Kitchen/Dining Room	6359 x 4088 (max)	20'10" x 13'4" (max)
Utility	1818 x 1633	5'11" x 5'4"
Study	2982 x 1986	9'9" x 6'6"

Master Bedroom	4219 x 3433	13'10" x 11'3"
Bedroom 2	3458 x 2957	11'4" x 9'8"
Bedroom 3	3038 x 3036	9'11" x 9'11"
Bedroom 4	2964 x 1957	9'8" x 6'5"



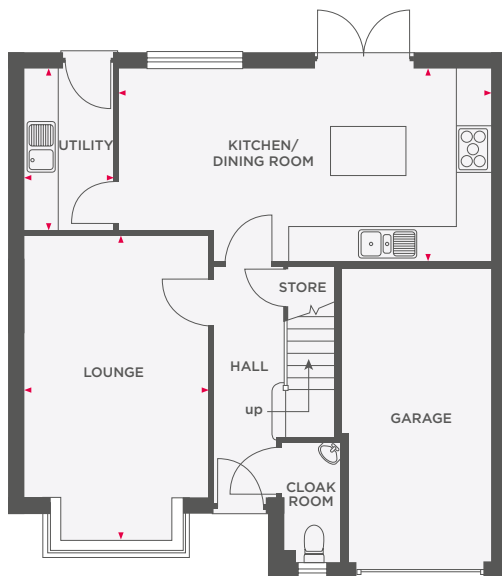
Wain Homes abides by the New Homes Quality Code, an independent industry code introduced to champion quality new homes and better consumer outcomes. Dimensions shown are internal finished dimensions which may vary as each home is built individually and the precise internal finishes may not always be the same. Please be aware that window and door positions could vary due to plot orientation. It is essential to view the working drawings with our Sales Executive for plot specific detail. Enquire for further information. Wain Homes Policy is continuous product and specification development. Every effort has been made to ensure the accuracy of the information provided in this leaflet at the date of publication but it may be subject to change without notice. Please consult with our Sales Executive to obtain the current specification. You should take appropriate steps to verify any information upon which you wish to rely. The sizes indicated are not intended to be used for carpet sizes, appliance spaces or items of furniture. Elevational treatments may vary to those shown. These particulars are intended for guidance only and their accuracy is not guaranteed. They do not constitute a contract, part of a contract or warranty. (September 2024)



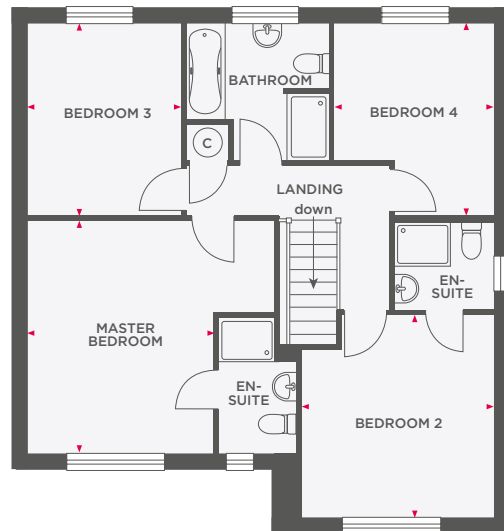


THE SHAKESPEARE

4 BEDROOM DETACHED HOME WITH INTEGRAL GARAGE



Lounge	3321 x 5459 (max)	10'10" x 17'10" (max)
Kitchen/Dining Room	6745 x 3507 (max)	22'1" x 11'6" (max)
Utility	1724 x 2950	5'7" x 9'8"



Master Bedroom	3376 x 4136	11'0" x 13'6"
Bedroom 2	3387 x 3573	11'1" x 11'8"
Bedroom 3	2821 x 3544	9'3" x 11'7"
Bedroom 4	3001 x 3557	9'10" x 11'8"



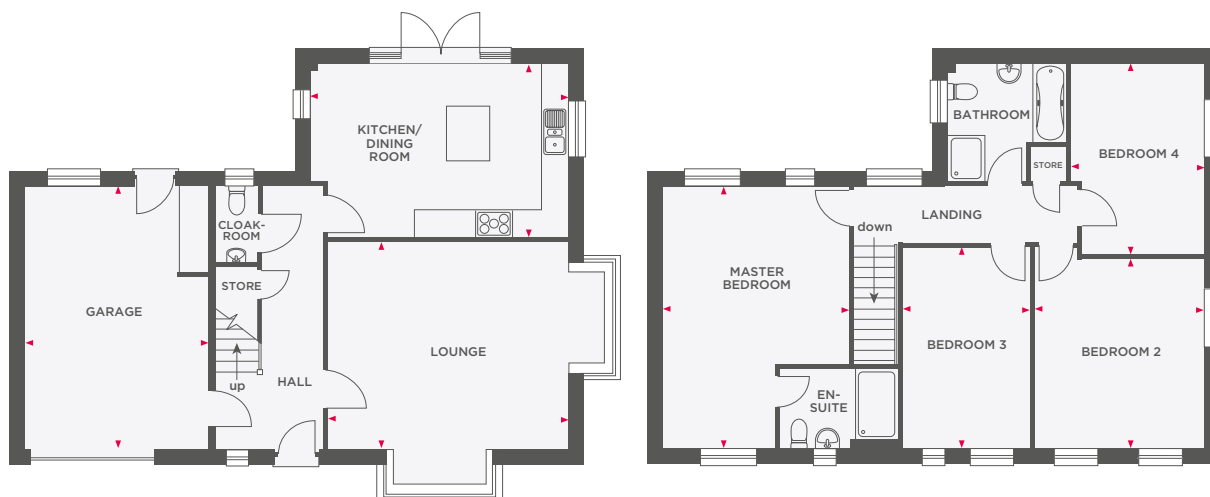
Wain Homes abides by the New Homes Quality Code, an independent industry code introduced to champion quality new homes and better consumer outcomes. Dimensions shown are internal finished dimensions which may vary as each home is built individually and the precise internal finishes may not always be the same. Please be aware that window and door positions could vary due to plot orientation. It is essential to view the working drawings with our Sales Executive for plot specific detail. Enquire for further information. Wain Homes Policy is continuous product and specification development. Every effort has been made to ensure the accuracy of the information provided in this leaflet at the date of publication but it may be subject to change without notice. Please consult with our Sales Executive to obtain the current specification. You should take appropriate steps to verify any information upon which you wish to rely. The sizes indicated are not intended to be used for carpet sizes, appliance spaces or items of furniture. Elevational treatments may vary to those shown. These particulars are intended for guidance only and their accuracy is not guaranteed. They do not constitute a contract, part of a contract or warranty. (September 2023)

Wain
HOMES



THE WHITEMOOR

4 BEDROOM DETACHED HOME WITH INTEGRAL GARAGE



Lounge	5115 x 4372	16'9" x 14'4"
Kitchen/Dining Room	5522 x 3700	18'1" x 12'1"
Garage/Utility	3887 x 5635	12'9" x 18'5"

Master Bedroom	3987 x 5635	13'1" x 18'5"
Bedroom 2	3647 x 4048	11'11" x 13'3"
Bedroom 3	2713 x 4317	8'10" x 14'1"
Bedroom 4	2860 x 4086	9'4" x 13'4"



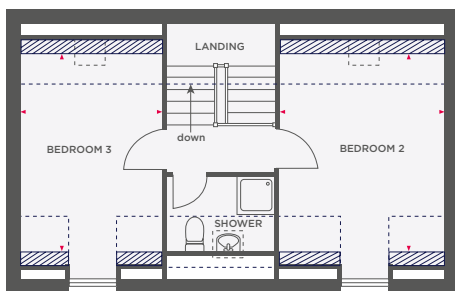
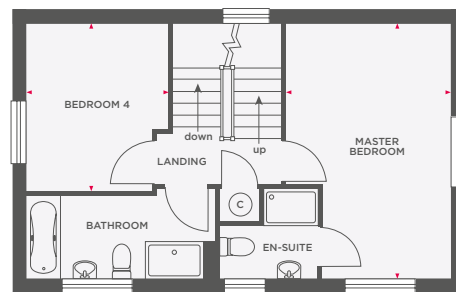
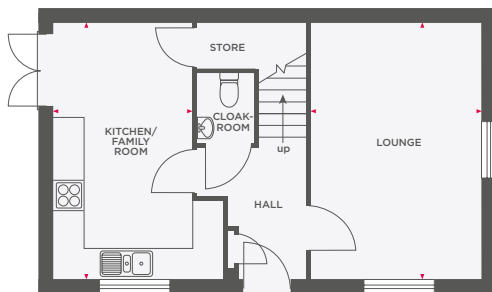
Wain Homes abides by the New Homes Quality Code, an independent industry code introduced to champion quality new homes and better consumer outcomes. Dimensions shown are internal finished dimensions which may vary as each home is built individually and the precise internal finishes may not always be the same. Please be aware that window and door positions could vary due to plot orientation. It is essential to view the working drawings with our Sales Executive for plot specific detail. Enquire for further information. Wain Homes Policy is continuous product and specification development. Every effort has been made to ensure the accuracy of the information provided in this leaflet at the date of publication but it may be subject to change without notice. Please consult with our Sales Executive to obtain the current specification. You should take appropriate steps to verify any information upon which you wish to rely. The sizes indicated are not intended to be used for carpet sizes, appliance spaces or items of furniture. Elevational treatments may vary to those shown. These particulars are intended for guidance only and their accuracy is not guaranteed. They do not constitute a contract, part of a contract or warranty. (September 2023)

Wain
HOMES



THE WINCHESTER

4 BEDROOM DETACHED HOME WITH GARAGE



Limited Use Area



Reduced head height below 1.5m

Lounge	3390 x 5070	11'1" x 16'7"
Kitchen/Family Room	2800 x 5070	9'2" x 16'7"
Master Bedroom	3450 x 5070	11'3" x 16'7"
Bedroom 4	2800 x 3285	9'2" x 10'9"
Bedroom 2	3450 x 3971	11'3" x 13'0"
Bedroom 3	2800 x 3971	9'2" x 13'0"



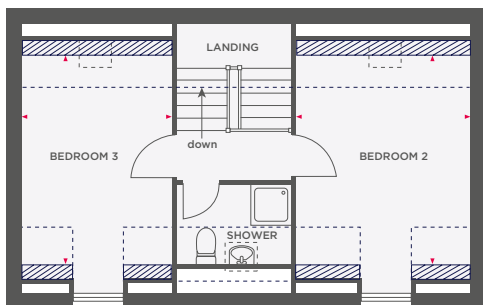
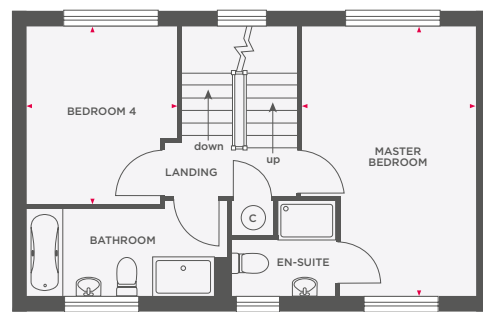
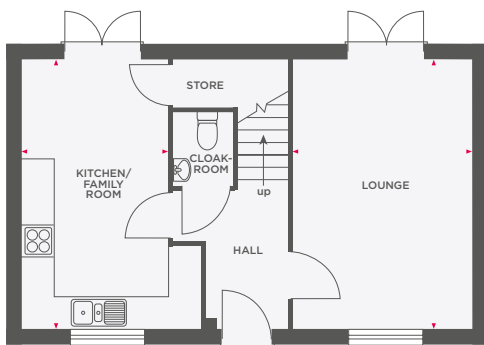
Wain Homes abides by the New Homes Quality Code, an independent industry code introduced to champion quality new homes and better consumer outcomes. Dimensions shown are internal finished dimensions which may vary as each home is built individually and the precise internal finishes may not always be the same. Please be aware that window and door positions could vary due to plot orientation. It is essential to view the working drawings with our Sales Executive for plot specific detail. Enquire for further information. Wain Homes Policy is continuous product and specification development. Every effort has been made to ensure the accuracy of the information provided in this leaflet at the date of publication but it may be subject to change without notice. Please consult with our Sales Executive to obtain the current specification. You should take appropriate steps to verify any information upon which you wish to rely. The sizes indicated are not intended to be used for carpet sizes, appliance spaces or items of furniture. Elevational treatments may vary to those shown. These particulars are intended for guidance only and their accuracy is not guaranteed. They do not constitute a contract, part of a contract or warranty. (September 2023)

Wain
HOMES



THE WORDSWORTH

4 BEDROOM DETACHED HOME WITH GARAGE



Limited Use Area

Reduced head height below 1.5m

Lounge	3390 x 5070	11'1" x 16'7"
Kitchen/Family Room	2800 x 5070	9'2" x 16'7"
Master Bedroom	3450 x 5070	11'3" x 16'7"
Bedroom 4	2800 x 3285	9'2" x 10'9"
Bedroom 2	3450 x 3971	11'3" x 13'0"
Bedroom 3	2800 x 3971	9'2" x 13'0"



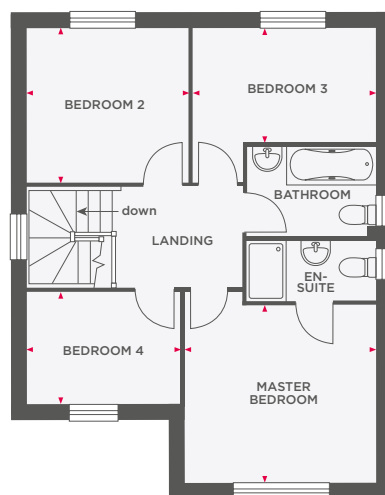
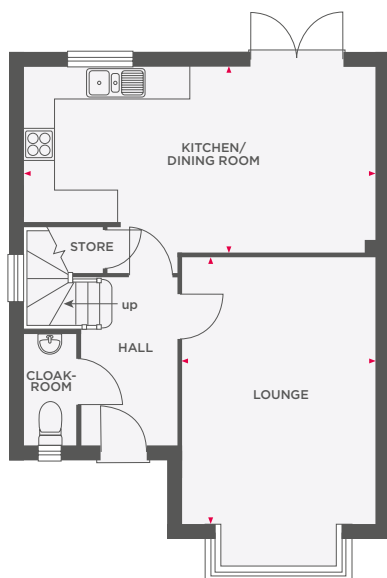
Wain Homes abides by the New Homes Quality Code, an independent industry code introduced to champion quality new homes and better consumer outcomes. Dimensions shown are internal finished dimensions which may vary as each home is built individually and the precise internal finishes may not always be the same. Please be aware that window and door positions could vary due to plot orientation. It is essential to view the working drawings with our Sales Executive for plot specific detail. Enquire for further information. Wain Homes Policy is continuous product and specification development. Every effort has been made to ensure the accuracy of the information provided in this leaflet at the date of publication but it may be subject to change without notice. Please consult with our Sales Executive to obtain the current specification. You should take appropriate steps to verify any information upon which you wish to rely. The sizes indicated are not intended to be used for carpet sizes, appliance spaces or items of furniture. Elevational treatments may vary to those shown. These particulars are intended for guidance only and their accuracy is not guaranteed. They do not constitute a contract, part of a contract or warranty. (September 2023)

Wain
HOMES



THE WREN

4 BEDROOM DETACHED HOME WITH GARAGE



Lounge	3610 x 4844	11'10" x 15'10"
Kitchen/Dining Room	6535 x 3450 (max)	21'5" x 11'3" (max)

Master Bedroom	3602 x 3364	11'9" x 11'0"
Bedroom 2	2953 x 2836	9'8" x 9'3"
Bedroom 3	3491 x 2091	11'5" x 6'10"
Bedroom 4	2841 x 2094	9'3" x 6'10"



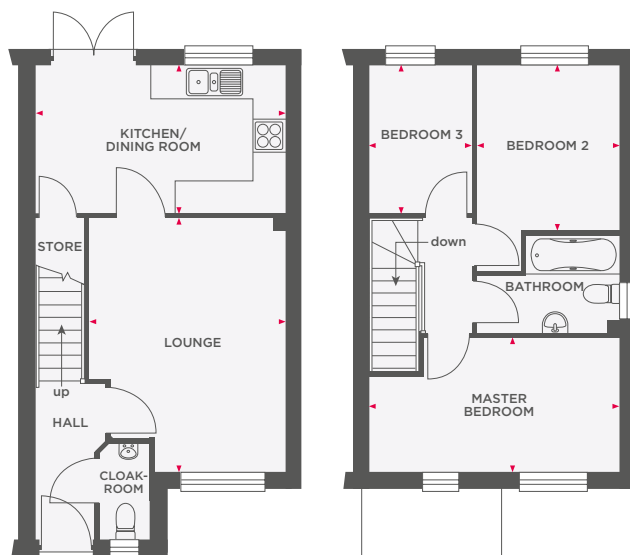
Wain Homes abides by the New Homes Quality Code, an independent industry code introduced to champion quality new homes and better consumer outcomes. Dimensions shown are internal finished dimensions which may vary as each home is built individually and the precise internal finishes may not always be the same. Please be aware that window and door positions could vary due to plot orientation. It is essential to view the working drawings with our Sales Executive for plot specific detail. Enquire for further information. Wain Homes Policy is continuous product and specification development. Every effort has been made to ensure the accuracy of the information provided in this leaflet at the date of publication but it may be subject to change without notice. Please consult with our Sales Executive to obtain the current specification. You should take appropriate steps to verify any information upon which you wish to rely. The sizes indicated are not intended to be used for carpet sizes, appliance spaces or items of furniture. Elevational treatments may vary to those shown. These particulars are intended for guidance only and their accuracy is not guaranteed. They do not constitute a contract, part of a contract or warranty. (September 2023)

Wain
HOMES



THE BAIRD

3 BEDROOM HOME WITH PARKING



Lounge	3582 x 4648 (max)	11'9" x 15'3" (max)
Kitchen/Dining Room	2695 x 4554	8'10" x 14'11"

Master Bedroom	2444 x 4554 (max)	8'0" x 14'11" (max)
Bedroom 2	2596 x 3009	8'6" x 9'10"
Bedroom 3	1866 x 2695	6'1" x 8'10"



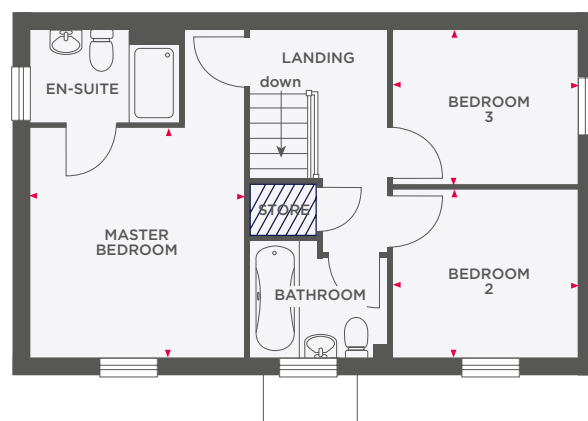
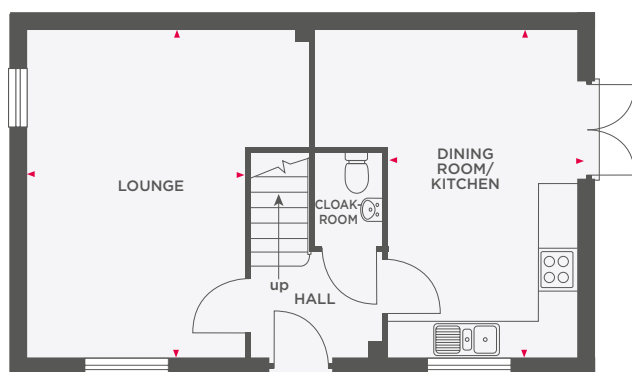
Wain Homes abides by the New Homes Quality Code, an independent industry code introduced to champion quality new homes and better consumer outcomes. Dimensions shown are internal finished dimensions which may vary as each home is built individually and the precise internal finishes may not always be the same. Please be aware that window and door positions could vary due to plot orientation. It is essential to view the working drawings with our Sales Executive for plot specific detail. Enquire for further information. Wain Homes Policy is continuous product and specification development. Every effort has been made to ensure the accuracy of the information provided in this leaflet at the date of publication but it may be subject to change without notice. Please consult with our Sales Executive to obtain the current specification. You should take appropriate steps to verify any information upon which you wish to rely. The sizes indicated are not intended to be used for carpet sizes, appliance spaces or items of furniture. Elevational treatments may vary to those shown. These particulars are intended for guidance only and their accuracy is not guaranteed. They do not constitute a contract, part of a contract or warranty. (September 2023)

**Wain
HOMES**



THE BRUNSWICK

3 BEDROOM HOME WITH PARKING



Limited Use Area

Reduced head height below 1.5m

Lounge	3315 x 4960 (max)	10'10" x 16'3" (max)
Kitchen/Dining Room	2835 x 4960 (max)	9'3" x 16'3" (max)

Master Bedroom	3315 x 3420	10'10" x 11'2"
Bedroom 2	2875 x 2586	9'5" x 8'5"
Bedroom 3	3030 x 2285	9'11" x 7'5"

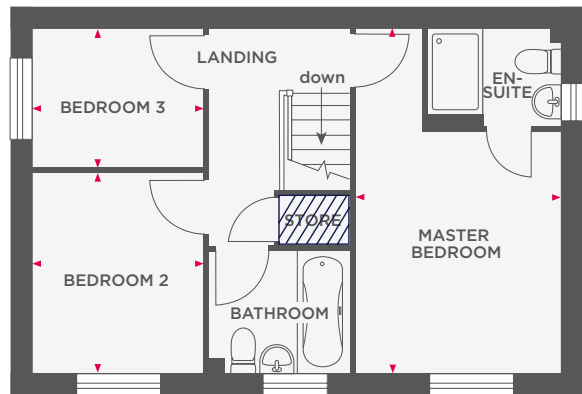
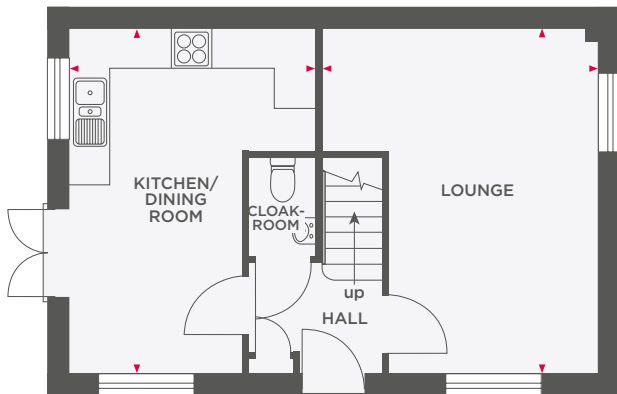
Dimensions shown are internal finished dimensions which may vary as each home is built individually and the precise internal finishes may not always be the same. Please be aware that window and door positions could vary due to plot orientation. It is essential to view the working drawings with our Sales Executive for plot specific detail. Enquire for further information. Wain Homes Policy is continuous product and specification development. Every effort has been made to ensure the accuracy of the information provided in this leaflet at the date of publication but it may be subject to change without notice. Please consult with our Sales Executive to obtain the current specification. You should take appropriate steps to verify any information upon which you wish to rely. The sizes indicated are not intended to be used for carpet sizes, appliance spaces or items of furniture. Elevational treatments may vary to those shown. These particulars are intended for guidance only and their accuracy is not guaranteed. They do not constitute a contract, part of a contract or warranty. (September 2024)

Wain
HOMES



THE CLAYDON

3 BEDROOM HOME WITH PARKING



Limited Use Area



Reduced head height below 1.5m

Lounge	3895 x 4960 (max)	12'9" x 16'3" (max)
Kitchen/Dining Room	3391 x 4960 (max)	11'1" x 16'3" (max)

Master Bedroom	2938 x 4960 (max)	9'7" x 16'3" (max)
Bedroom 2	2322 x 2750	7'7" x 9'0"
Bedroom 3	2322 x 2117	7'7" x 7'1"

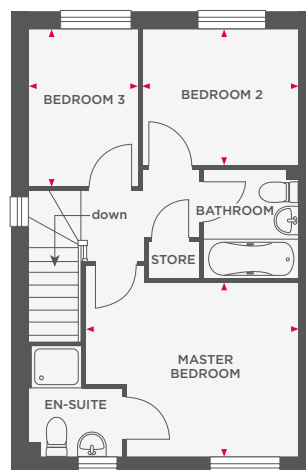
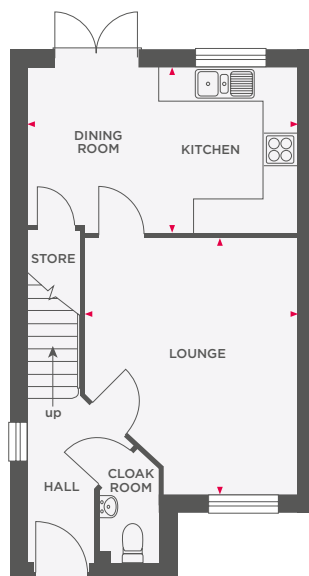
Dimensions shown are internal finished dimensions which may vary as each home is built individually and the precise internal finishes may not always be the same. Please be aware that window and door positions could vary due to plot orientation. It is essential to view the working drawings with our Sales Executive for plot specific detail. Enquire for further information. Wain Homes Policy is continuous product and specification development. Every effort has been made to ensure the accuracy of the information provided in this leaflet at the date of publication but it may be subject to change without notice. Please consult with our Sales Executive to obtain the current specification. You should take appropriate steps to verify any information upon which you wish to rely. The sizes indicated are not intended to be used for carpet sizes, appliance spaces or items of furniture. Elevational treatments may vary to those shown. These particulars are intended for guidance only and their accuracy is not guaranteed. They do not constitute a contract, part of a contract or warranty. (September 2024)

Wain
HOMES



THE TREVITHICK

3 BEDROOM HOME WITH PARKING



Lounge	3800 x 4605 (max)	12'5" x 15'1" (max)
Kitchen/Dining Room	4845 x 2965	15'10" x 9'8"

Master Bedroom	3910 x 3100 (max)	12'10" x 10'2" (max)
Bedroom 2	2795 x 2430	9'2" x 7'10"
Bedroom 3	1951 x 2820	6'4" x 9'3"



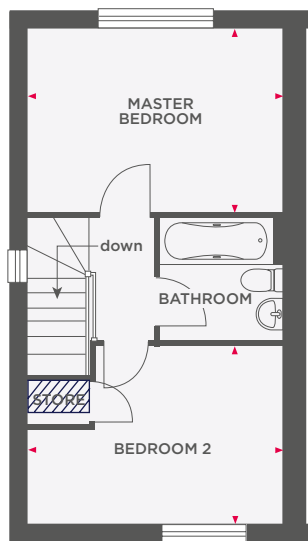
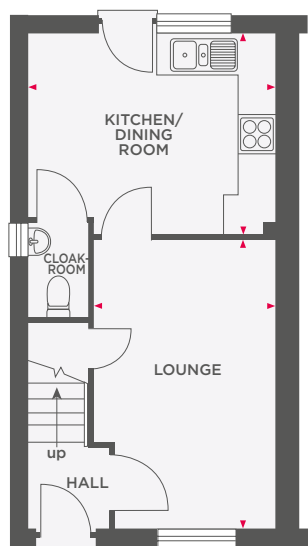
Wain Homes abides by the New Homes Quality Code, an independent industry code introduced to champion quality new homes and better consumer outcomes. Dimensions shown are internal finished dimensions which may vary as each home is built individually and the precise internal finishes may not always be the same. Please be aware that window and door positions could vary due to plot orientation. It is essential to view the working drawings with our Sales Executive for plot specific detail. Enquire for further information. Wain Homes Policy is continuous product and specification development. Every effort has been made to ensure the accuracy of the information provided in this leaflet at the date of publication but it may be subject to change without notice. Please consult with our Sales Executive to obtain the current specification. You should take appropriate steps to verify any information upon which you wish to rely. The sizes indicated are not intended to be used for carpet sizes, appliance spaces or items of furniture. Elevational treatments may vary to those shown. These particulars are intended for guidance only and their accuracy is not guaranteed. They do not constitute a contract, part of a contract or warranty. (September 2023)

Wain
HOMES



THE BELL

2 BEDROOM HOME WITH PARKING



Limited Use Area

Reduced head height below 1.5m

Lounge	2820 x 4298 (max)	9'3" x 14'1" (max)
Kitchen/Dining Room	3848 x 3046	12'7" x 9'11"

Master Bedroom	3848 x 2696 (max)	12'7" x 9'8" (max)
Bedroom 2	3848 x 2685 (max)	12'7" x 8'9" (max)



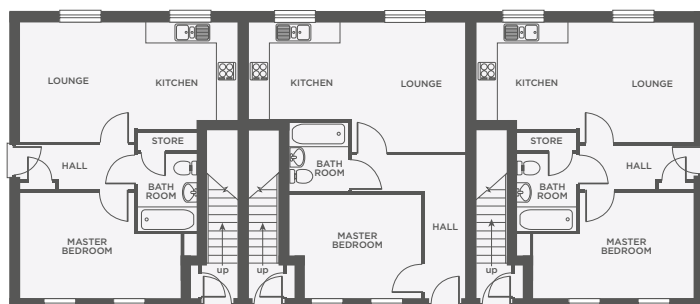
Wain Homes abides by the New Homes Quality Code, an independent industry code introduced to champion quality new homes and better consumer outcomes. Dimensions shown are internal finished dimensions which may vary as each home is built individually and the precise internal finishes may not always be the same. Please be aware that window and door positions could vary due to plot orientation. It is essential to view the working drawings with our Sales Executive for plot specific detail. Enquire for further information. Wain Homes Policy is continuous product and specification development. Every effort has been made to ensure the accuracy of the information provided in this leaflet at the date of publication but it may be subject to change without notice. Please consult with our Sales Executive to obtain the current specification. You should take appropriate steps to verify any information upon which you wish to rely. The sizes indicated are not intended to be used for carpet sizes, appliance spaces or items of furniture. Elevational treatments may vary to those shown. These particulars are intended for guidance only and their accuracy is not guaranteed. They do not constitute a contract, part of a contract or warranty. (September 2023)

Wain
HOMES



THE CHINLEY APARTMENTS

1 BEDROOM APARTMENTS



Type A

Type B

Type A

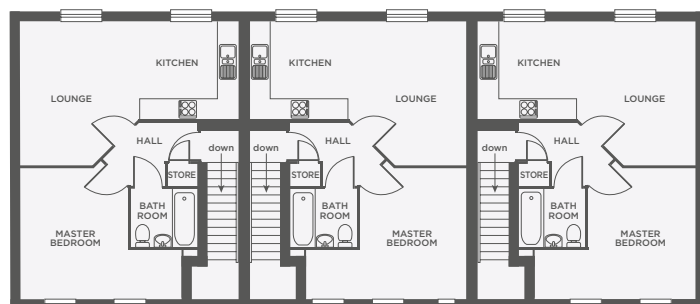
GROUND FLOOR

Type A

Lounge/Kitchen	6293 x 3532 (max)	20'7" x 11'7" (max)
Master Bedroom	4531 x 3048	14'10" x 10'0"

Type B

Lounge/Kitchen	6300 x 3855 (max)	20'8" x 12'6" (max)
Master Bedroom	3814 x 3000	12'6" x 9'10"



Type C

Type C

Type C

FIRST FLOOR

Type C

Lounge/Kitchen	6293 x 3532 (max)	20'7" x 11'7" (max)
Master Bedroom	4531 x 3787	14'10" x 12'5"



Wain Homes abides by the New Homes Quality Code, an independent industry code introduced to champion quality new homes and better consumer outcomes. Dimensions shown are internal finished dimensions which may vary as each home is built individually and the precise internal finishes may not always be the same. Please be aware that window and door positions could vary due to plot orientation. It is essential to view the working drawings with our Sales Executive for plot specific detail. Enquire for further information. Wain Homes Policy is continuous product and specification development. Every effort has been made to ensure the accuracy of the information provided in this leaflet at the date of publication but it may be subject to change without notice. Please consult with our Sales Executive to obtain the current specification. You should take appropriate steps to verify any information upon which you wish to rely. The sizes indicated are not intended to be used for carpet sizes, appliance spaces or items of furniture. Elevational treatments may vary to those shown. These particulars are intended for guidance only and their accuracy is not guaranteed. They do not constitute a contract, part of a contract or warranty. (September 2024)

