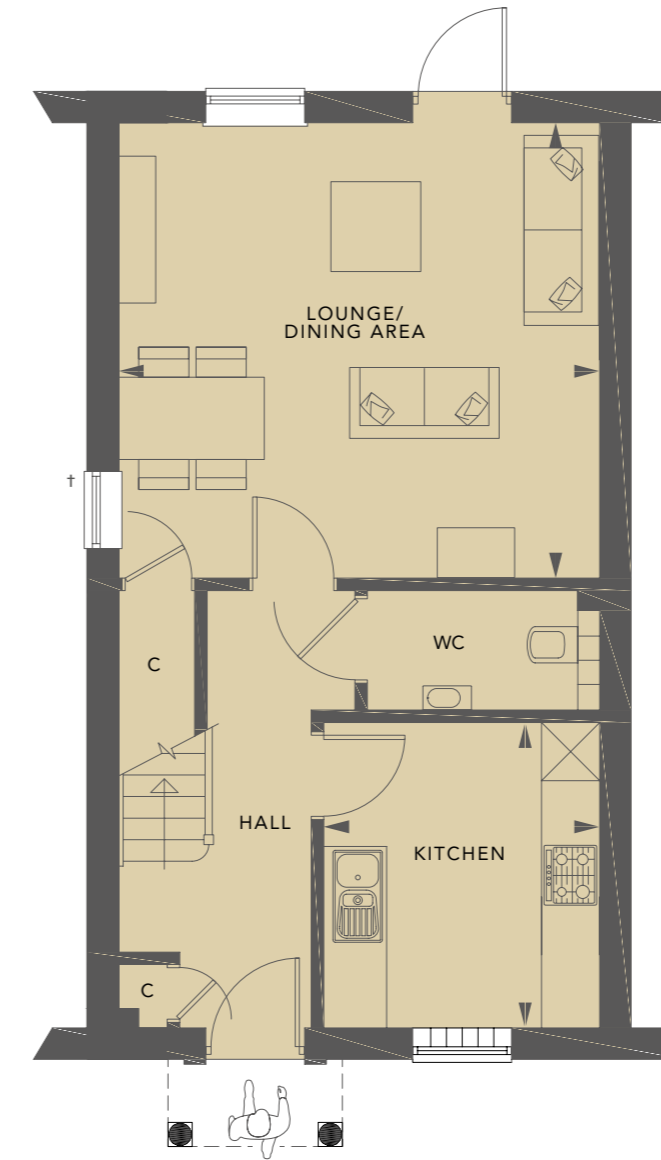


The Beech combines a traditional layout with modern style. Enjoy views of the gardens, and spacious rooms filled with natural light, enjoy a prestige home.

LOUNGE/DINING AREA	4.71m x 4.97m / 15'5" x 16'3"
KITCHEN	3.16m x 2.86m / 10'4" x 9'4"
MASTER BEDROOM	3.14m x 4.97m / 10'3" x 16'3"
BEDROOM 2	4.41m x 2.76m / 14'5" x 9'1"
TOTAL	93.02 sq m / 1001 sq ft

THE BEECH

Plots 72, 73, 75*, 76, 77*, 78, 79, 80*, 81 & 82*



GROUND FLOOR



FIRST FLOOR

*Plots 75, 77, 80 & 82 are handed.

[†]Windows to plots 72, 78 and 82 only. Details may vary from plot to plot. Dimensions are approximate and should not be used for furniture space, appliance space or carpet sizes. Please ask for details of your chosen plot. The contents of this document do not form or constitute a warranty or represent part of any contract. Please note: to increase legibility these plans have been sized to fit the page. As a result each plan may be a different scale to others within this document. S/W – Space for wardrobe. W – Wardrobe (only provided to Master Bedroom). C – Cupboard.

Computer generated image is indicative only.