

ANWYL
thoughtful homes



the henley

4 bed detached with garage

A *beautiful* 4 bedroom detached home.

Key features include characterful bay windows, lovely high ceilings and a master en-suite

got
questions?

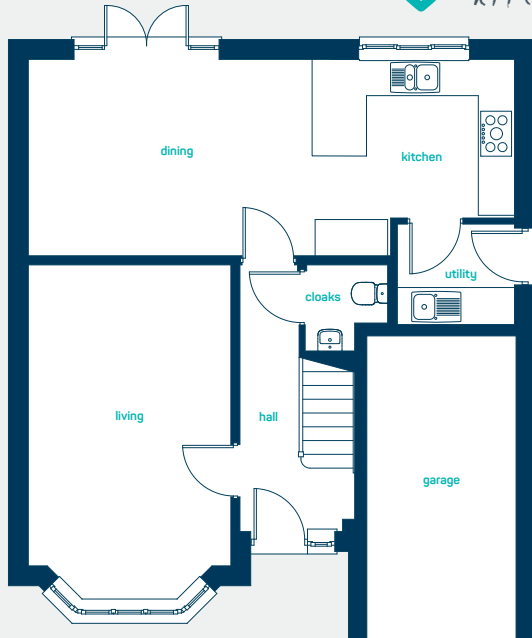
call...

**03300
244 944**

www.anwylhomes.co.uk

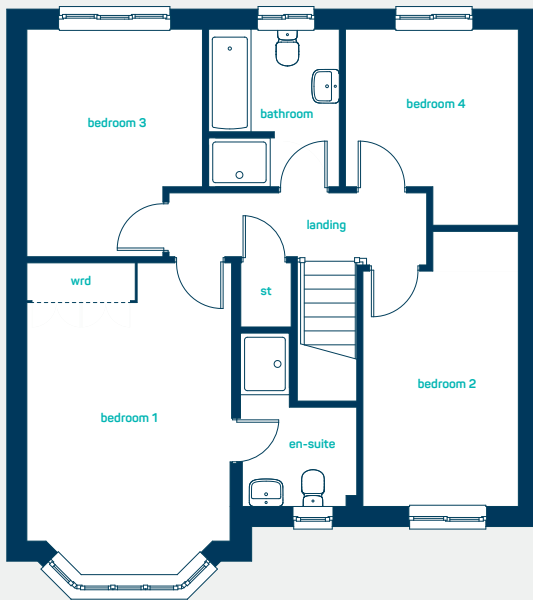
everything considered.

 Large open plan
kitchen diner



ground floor

kitchen/dining	26'5" x 10'8"
utility	6'5" x 5'5"
living room	18'3" x 11'0"
kitchen/dining	8.05m x 3.25m
utility	1.95m x 1.64m
living room	5.55m x 3.35m



first floor

bedroom 1	16'10" x 10'11"
en-suite	9'4" x 6'2"
bedroom 2	14'9" x 8'4"
bedroom 3	12'3" x 9'5"
bedroom 4	10'6" x 9'4"
bathroom	8'6" x 7'0"
bedroom 1	5.12m x 3.33m
en-suite	2.84m x 1.87m
bedroom 2	4.50m x 2.55m
bedroom 3	3.73m x 2.88m
bedroom 4	3.21m x 2.83m
bathroom	2.58m x 2.14m

the henley

4 bed detached with garage

www.anwylhomes.co.uk

This is a computer generated image of the henley, elevation treatment may vary. Room sizes are approximate, dimensions are taken from the longest room point (please consult homes advisor for measurement points). Plots may be handed and any garages may be single or double. Kitchen and bathroom layouts are indicative. These plans are correct at the time of going to press, but may be subject to change during construction. Please ensure that you check for specific plot details.
07/05/19

get in
touch...
**03300
244 944**

everything considered.