

# OAKWOOD

CHARD



Plot 50

3 Bedroom Detached House

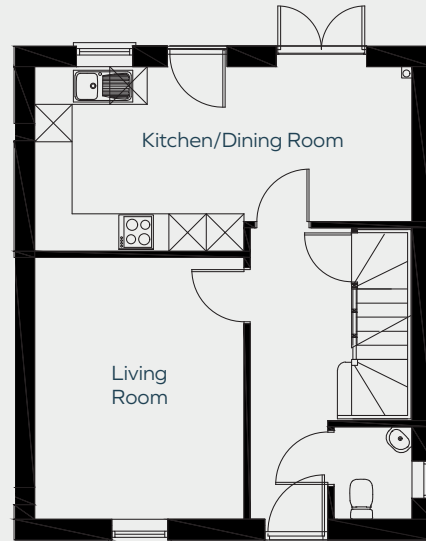
Plot  
50

3 Bedroom  
Detached House  
118sqm/1277sqft

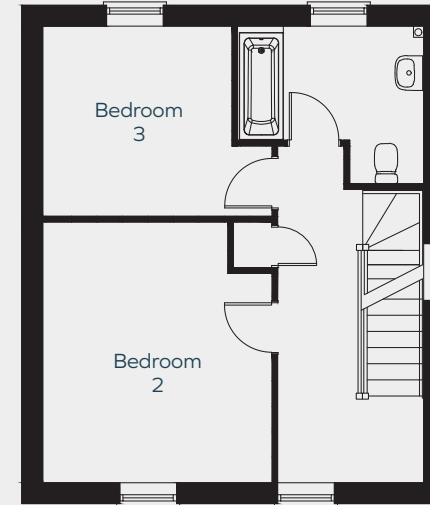
- 3 Bedrooms
- Ensuite shower room
- Living room
- Kitchen / dining room
- Double glazed windows
- Gas central heating
- Double Garage
- Garden

OAKWOOD  
— CHARD —

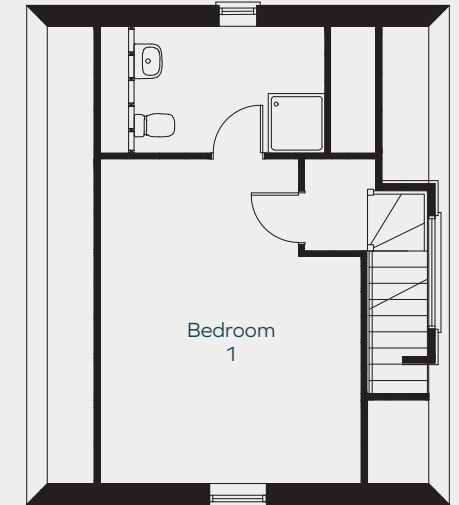
Ground Floor



First Floor



Second Floor



Living room 4.1m x 3.3m 13'4" x 10'8"  
Kitchen / dining room 6m x 2.9m 19'6" x 9'5"

Bedroom 2 4.1m x 3.6m 13'4" x 11'8"  
Bedroom 3 3m x 3m 9'8" x 9'8"

Bedroom 1 5.1m x 4.1m max 16'7" x 13'4"



Raising Standards. Protecting Homeowners



www.consumercode.co.uk



01460 68222  
morrishhomes.co.uk

Plot floor plans are provided to indicate proposed floor layout for each home. Room measurements are accurate within + or - 50mm, however it is not recommended that these measurements are used for flooring installation, or such like, as plots can sometimes vary.