



# The Shrewsbury<sup>3</sup>

*Three Bedroom Home*





# The Shrewsbury<sup>3</sup>

*Three Bedroom Home*

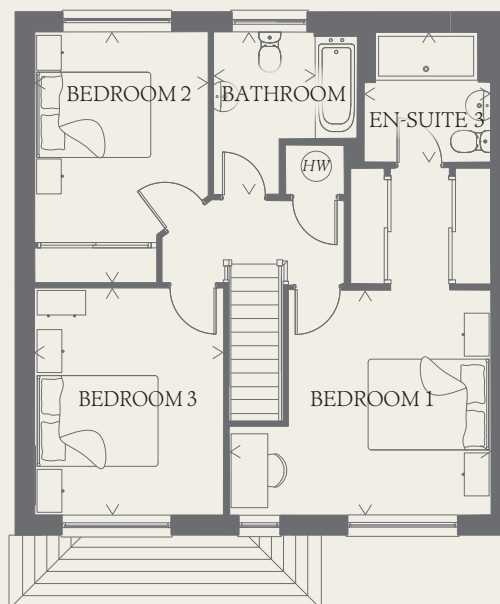
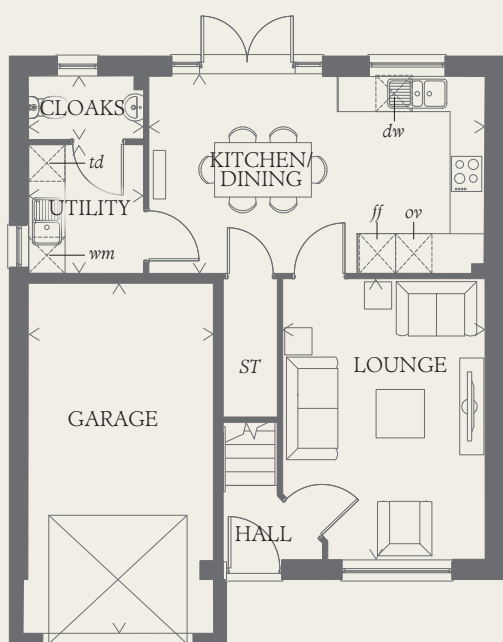




# The Shrewsbury<sup>3</sup>

## Three Bedroom Home

The perfect home to provide a foundation for family life, the Shrewsbury is elegantly designed to enhance each detail of the home. A spacious layout provides four bedrooms, three of them doubles, a well-planned kitchen/dining room and a comfortable lounge in which to relax.



### GROUND FLOOR

LOUNGE	15'3" x 11'1"	4.65 x 3.37m
KITCHEN/ DINING	18'4" x 10'9"	5.58 x 3.28m
UTILITY	7'0" x 6'3"	2.14 x 1.90m
CLOAKS	6'3" x 3'5"	1.90 x 1.05m
GARAGE	19'7" x 10'1"	5.97 x 3.08m

### FIRST FLOOR

BEDROOM 1	18'11" x 14'3"	5.76 x 4.35m
EN-SUITE	7'1" x 6'11"	2.17 x 2.12m
BEDROOM 2	13'8" x 9'5"	4.16 x 2.88m
BEDROOM 3	12'4" x 10'3"	3.77 x 3.13m
BATHROOM	8'10" x 7'10"	2.70 x 2.40m

#### CONSUMER CODE FOR HOME BUILDERS

[www.consumercode.co.uk](http://www.consumercode.co.uk)

Customers should note this illustration is an example of the Shrewsbury3 house type. All dimensions indicated are approximate and the furniture layout is for illustrative purposes only. Homes may be 'handed' (mirror image) versions of the illustrations, and may be detached, semi-detached or terraced. Materials used may differ from plot to plot including render and roof tile colours. Detailed plans and specifications are available for inspection for each plot at our Sales Centre during working hours and customers must check their individual specifications prior to making a reservation.

#### KEY

Hob	Tumble dryer space
Oven	Hot water cylinder
Fridge/freezer	Cupboard
Washing machine space	
Dishwasher space	

< Denotes where dimensions are taken from. All wardrobes are subject to site specification. Please see Sales Consultant for further details.

THINK 207163. EF\_SHR3\_DM.1 RV

