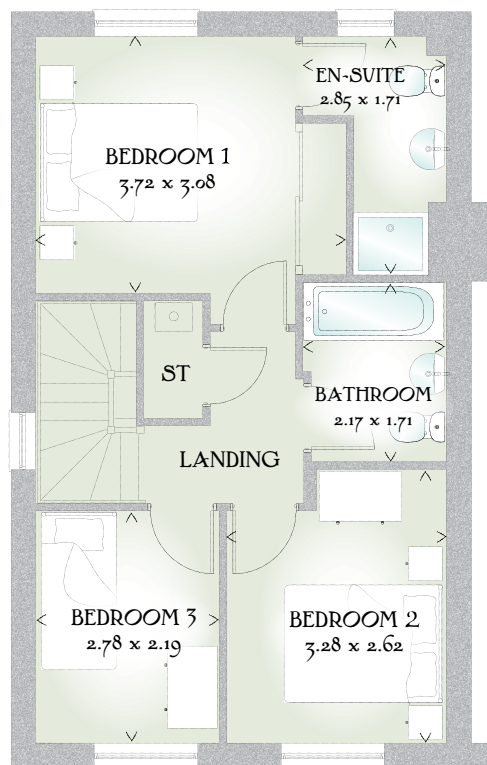
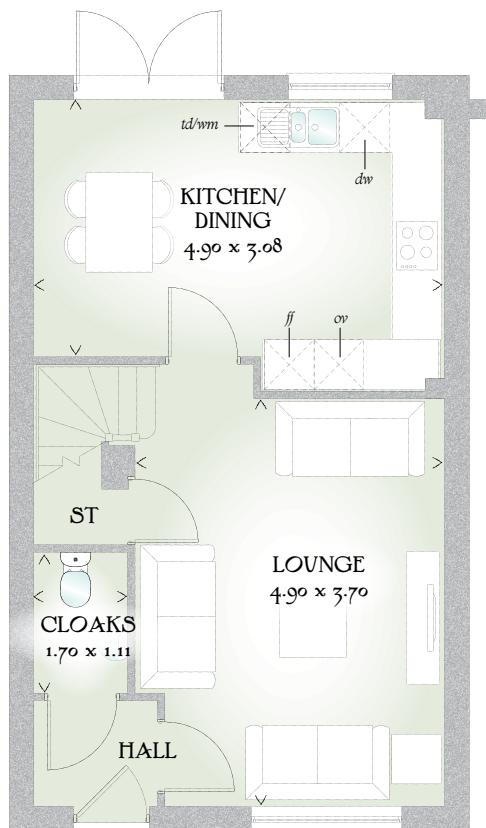




Malvern Semi

THREE BEDROOM HOME





THREE BEDROOM HOME

A substantial family home that is as dependable as it is solid, with elegant design making the most of the space available to provide ample room for family living, that makes living so much simpler.

GROUND FLOOR

Lounge	16'1" x 12'2"	4.90 x 3.70 m
Kitchen/ Dining	16'1" x 10'1"	4.90 x 3.08 m
Cloaks	5'7" x 3'8"	1.70 x 1.11 m

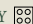

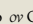

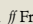
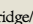
FIRST FLOOR

Bedroom 1	12'2" x 10'1"	3.72 x 3.08 m
En-suite	9'4" x 5'7"	2.85 x 1.71 m
Bedroom 2	10'9" x 8'7"	3.28 x 2.62 m
Bedroom 3	9'1" x 7'2"	2.78 x 2.19 m
Bathroom	7'1" x 5'7"	2.17 x 1.71 m

CONSUMER CODE FOR HOME BUILDERS

www.consumercode.co.uk

Customers should note this illustration is an example of the Malvern house type. All dimensions indicated are approximate and the furniture layout is for illustrative purposes only. Homes may be 'handed' (mirror image) versions of the illustrations, and may be detached, semi-detached or terraced. Materials used may differ from plot to plot including render and roof tile colours. Detailed plans and specifications are available for inspection for each plot at our Sales Centre during working hours and customers must check their individual specifications prior to making a reservation.

KEY  Hob  Oven  Fridge/freezer  Wm Washing machine space  dw Dishwasher space  td Tumble dryer space ST Cupboard < Denotes where dimensions are taken from. All wardrobes are subject to site specification. Please see Sales Consultant for further details.

Traditional homes, built the way you remember

 **REDROW**
A BETTER WAY TO LIVE