



# HEDGEROW

## 4 BEDROOM HOUSE

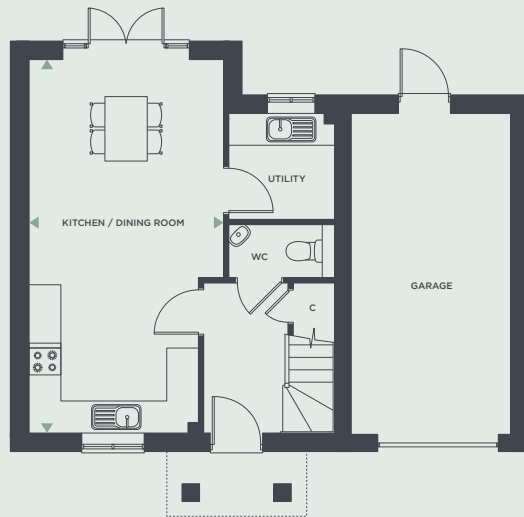
Plot Number  
109

KEY — C: Cupboard | AC: Airing Cupboard | W: Wardrobe

Floorplans are not to scale and are indicative only. Location of windows, doors, bathroom fittings, kitchen units and appliances may differ. Dimensions given are approximate and should not be used to order carpets or furniture. Balcony and terrace sizes and locations may differ from those illustrated.

### DIMENSIONS

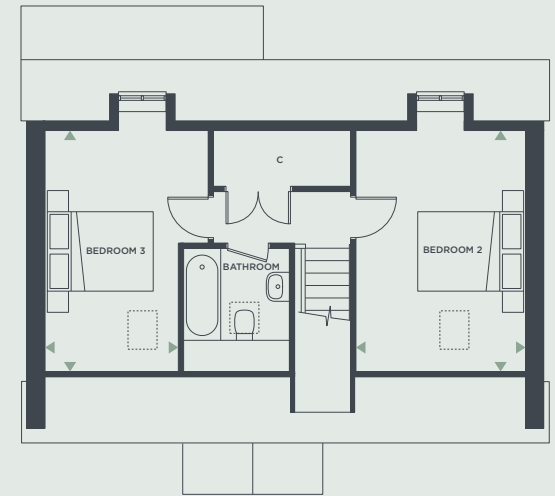
|                       |               |               |
|-----------------------|---------------|---------------|
| Kitchen / Dining Room | 3.71m x 7.10m | 12'2" x 23'3" |
| Living Room           | 3.24m x 6.08m | 10'8" x 20'0" |
| Master Bedroom        | 3.76m x 3.52m | 12'4" x 11'7" |
| Bedroom 2             | 3.24m x 4.58m | 10'8" x 15'0" |
| Bedroom 3             | 2.55m x 4.58m | 8'5" x 15'0"  |
| Bedroom 4             | 3.76m x 2.49m | 9'7" x 8'2"   |
| Net internal area     | 135.10 sq m   | 1454.20 sq ft |



Ground Floor



First Floor



Second Floor

BROOKFIELDS

BROOKFIELDS, STANE STREET, PULBOROUGH, WEST SUSSEX, RH20 | 01798 849 302 | BROOKFIELDS-PULBOROUGH.CO.UK



BROOKFIELDS  
PULBOROUGH, WEST SUSSEX

## HEDGEROW 4 BEDROOM HOUSE

Plot Number  
109



109

Map is indicative only and not to scale.

