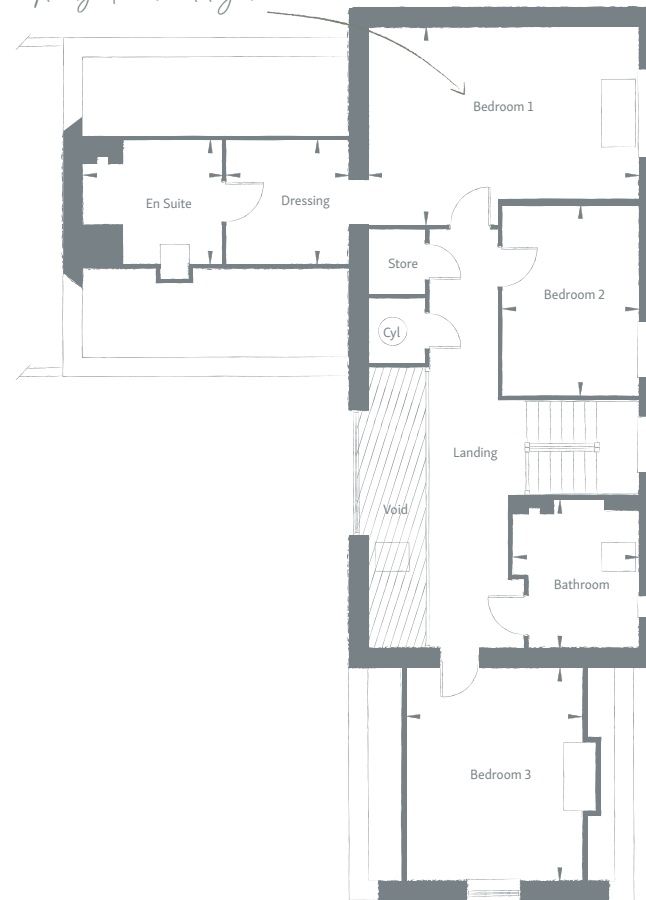


Double garage with direct access to the house - perfect after those shopping trips!

Bi-fold doors with access to the rear garden, great when you're hosting the party!

Just the place for a delicious family meal.

Velux window providing plenty of natural light.



Ground floor

Living	4.93m x 4.21m / 16' 2" x 13' 10"
Kitchen/Breakfast	5.36m x 5.78m / 17' 7" x 19' 0"
Utility	1.75m x 3.19m / 5' 9" x 10' 6"
Boots	1.75m x 2.61m / 5' 9" x 8' 7"
Family	3.34m x 5.89m / 11' 0" x 19' 4"
Dining	4.05m x 2.90m / 13' 4" x 9' 6"
Garage	6.17m x 6.28m / 20' 3" x 20' 7"

First floor

Master Bedroom	5.40m x 3.91m / 17' 9" x 12' 10"	Bedroom 3	3.48m x 4.21m / 11' 5" x 13' 10"
Dressing	2.40m x 2.67m / 7' 11" x 8' 9"	Bathroom	2.53m x 2.96m / 8' 4" x 9' 9"
En Suite	2.75m x 2.67m / 9' 1" x 8' 9"		
Bedroom 2	2.72m x 3.75m / 8' 11" x 12' 4"		

Total Area = 219.53m² 2363 sq ft