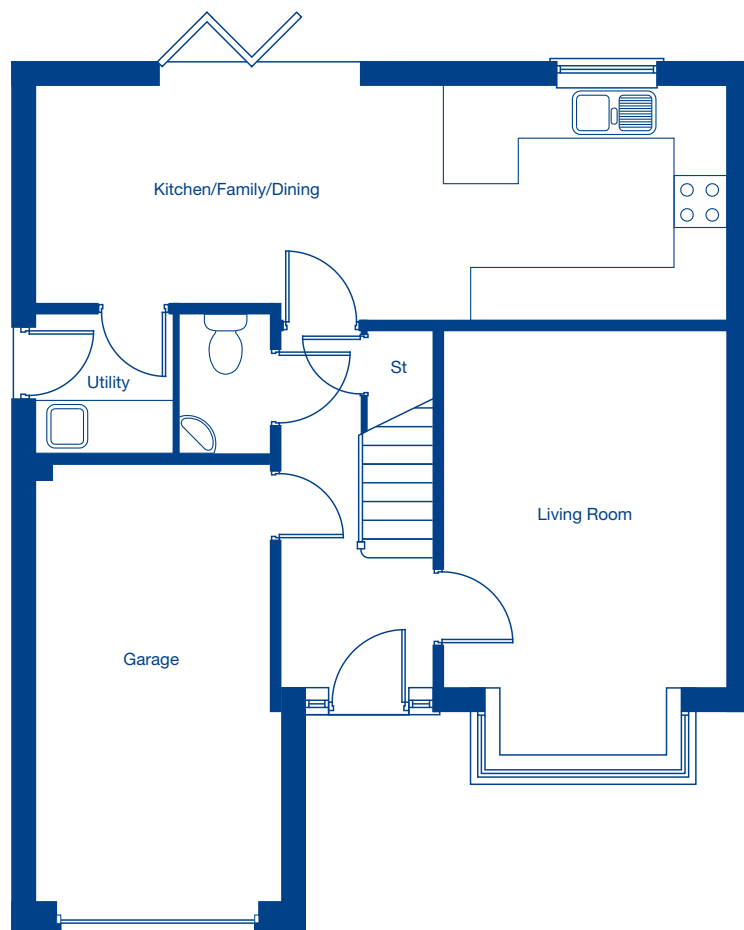


Stonecross Meadows

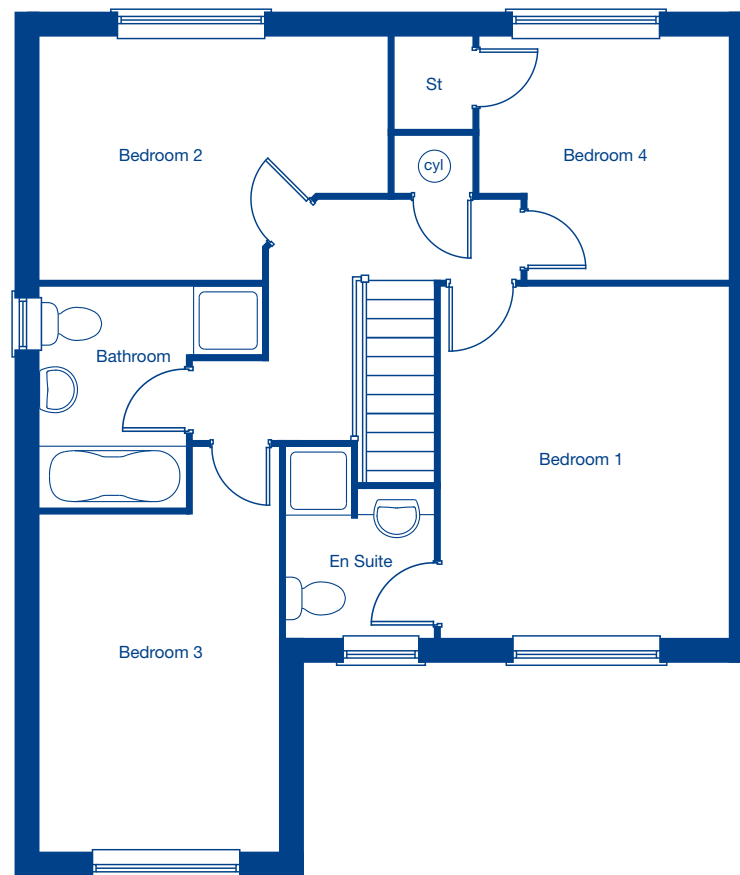
The Davenham – 4 bedroom detached home





Ground Floor

Living Room	5.00m x 3.34m	16'5" x 10'11"
Kitchen/Family/Dining	8.17m x 2.75m	26'10" x 9'0"
Garage	5.21m x 2.86m	17'1" x 9'5"



First Floor

Bedroom 1	4.18m x 3.41m	13'9" x 11'2"
Bedroom 2	4.12m x 2.87m	13'6" x 9'5"
Bedroom 3	3.99m x 2.80m	13'1" x 9'2"
Bedroom 4	2.95m x 2.87m	9'8" x 9'5"