



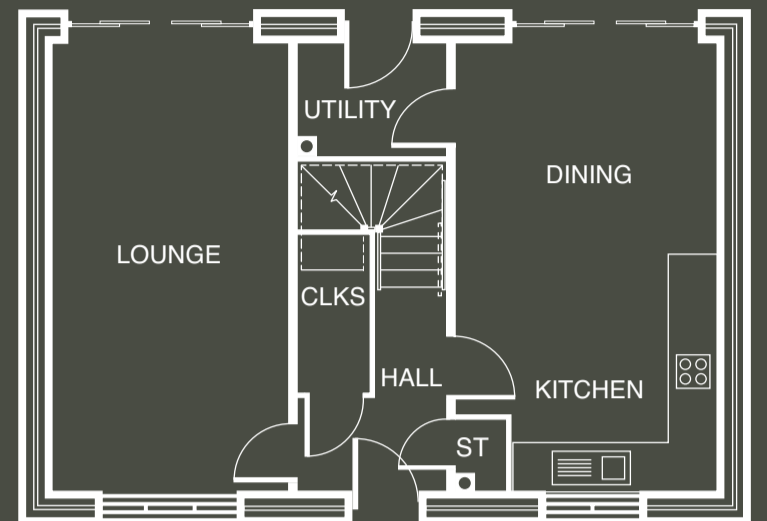
BURCOTE PARK
WOOD BURCOTE

Maple

4 BEDROOM HOME

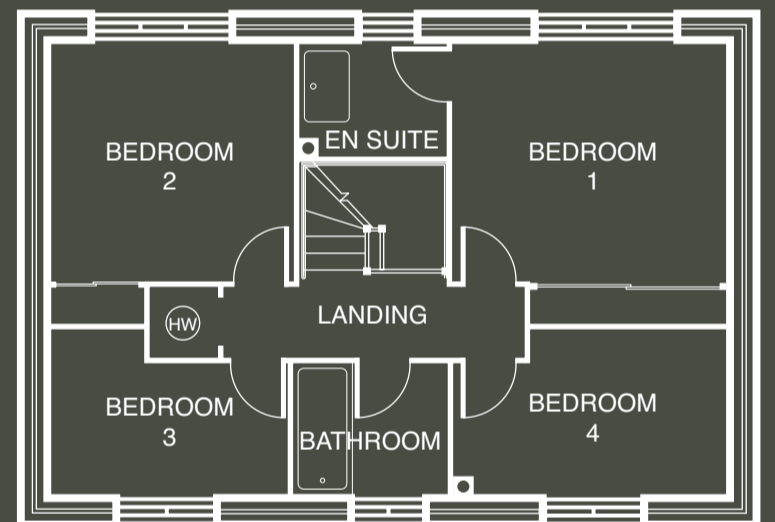
Plot No. 123, 126, 131, 132, 138, 139, 142, 144, 145, 150, 152, 155, 162, 169, 188

A substantial family home that is as dependable as it is solid, with the elegant design making the most of the space available to provide ample room for today's family lifestyle, the Maple makes living so much simpler.



GROUND FLOOR

LOUNGE	20'0" X 10'10"	6.10 X 3.29M
KITCHEN/DINING	20'0" X 11'9"*	6.10 X 3.58M*
CLOAKS	6'11" X 3'1"	2.10 X 0.94M
UTILITY	6'5" X 5'2"	1.96 X 1.59M



FIRST FLOOR

BEDROOM 1	12'7" X 11'11"*	3.84 X 3.64M*
EN SUITE	6'5" X 5'2"*	1.97 X 1.59M*
BEDROOM 2	12'7" X 11'0"	3.84 X 3.35M
BEDROOM 3	10'8" X 7'2"*	3.26 X 2.18M*
BEDROOM 4	12'0" X 7'1"*	3.65 X 2.17M*
BATHROOM	6'9" X 5'8"	2.06 X 1.73M

NOTE: Sloping soffits to first floor. All wardrobes are optional and positions shown are for information only. *Maximum dimension.

Customers should note this illustration is an example of the Maple house type. All dimensions indicated are approximate and for illustrative purposes only. All wardrobes are subject to site specification, please see Sales Consultant for further details. Homes may be a 'handed' (mirror image) versions of the illustrations, and may be detached, semi-detached or terraced. Materials used may differ from plot to plot including render and roof tile colours. Detailed plans and specifications are available for inspection for each plot at our Marketing Suite during working hours and customers must check their individual specifications prior to making reservation.