

ALLANWATER
HOMES

Hayford Mills

CAMBUSBARRON

FK7 9PN

2 bedroom Apartments &
3 & 4 bedroom Mews Style Townhouses

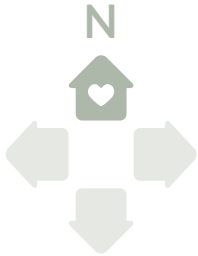


HAYFORD MILLS

Cambusbarron FK7 9PN

Development Siteplan

FIRST PHASE RELEASE



2 bedroom Apartments

3 bedroom Townhouses

4 bedroom Townhouse



BLOCK B
Earn & Tummel



The DEVERON
Terrace



The FINDHORN
Corner Terrace



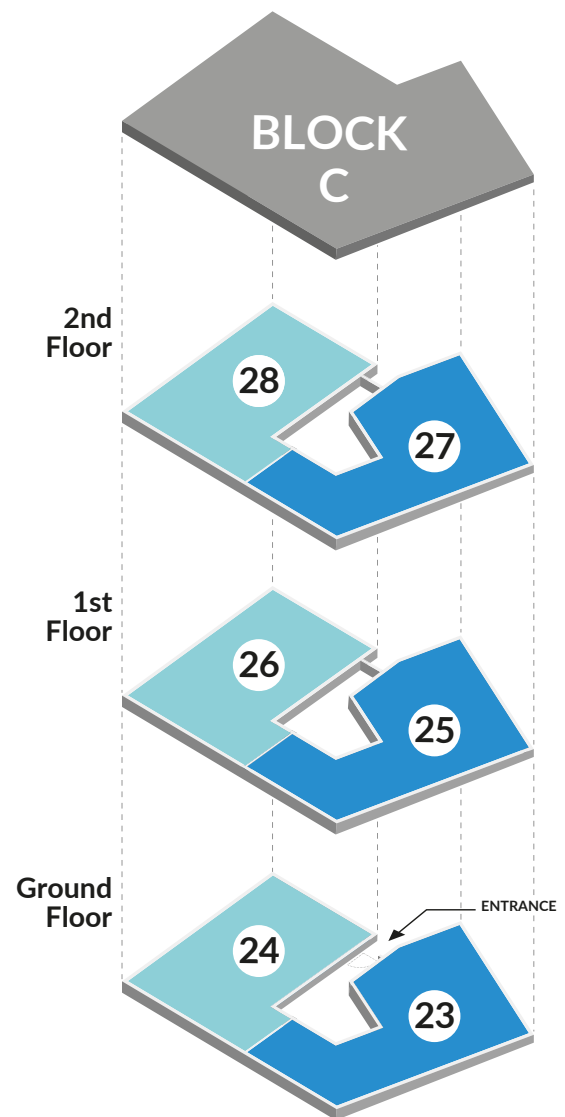
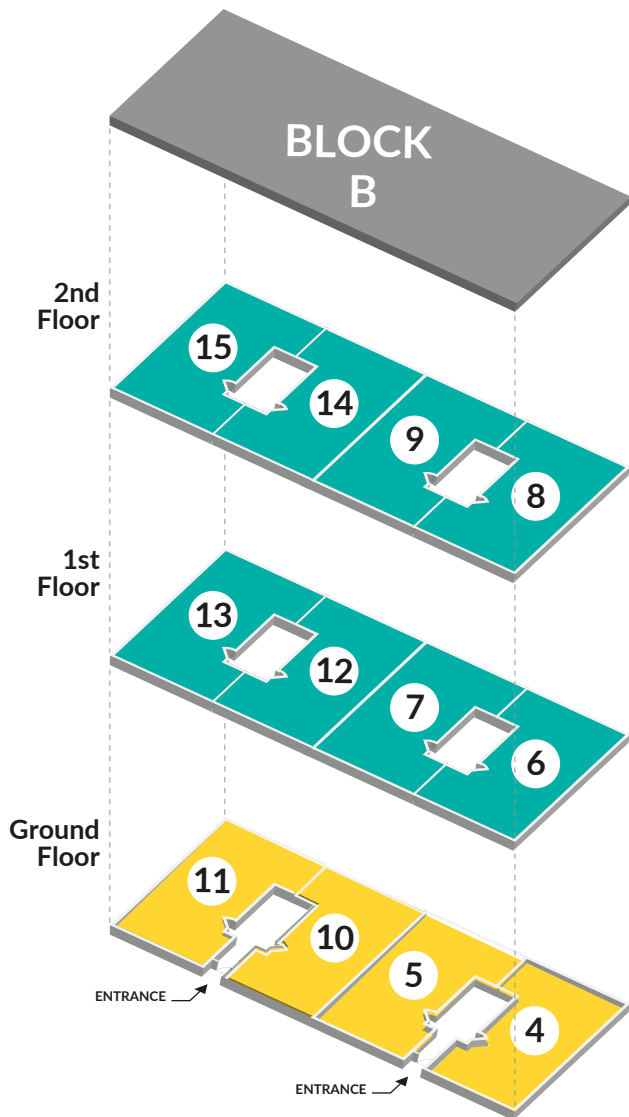
BLOCK C
Tweed & Forth

The Development Siteplan is for orientation purposes only and does not show details of land gradients, boundary treatments or lighting. The plan has been prepared with care, and it is our intention to build in accordance with this plan, but there may be occasions when boundaries, footpaths and landscaping may change during the building process. Please check with our Sales Negotiator for up-to-date details of your chosen property prior to reservation.

HAYFORD MILLS

Cambusbarron FK7 9PN

Apartment Elevations



Block B 2 bedroom Apartments

- The EARN* Apartment
- The TUMMEL* Apartment

Block C 2 bedroom Apartments

- The TWEED* Apartment
- The FORTH* Apartment

The Development Siteplan is for orientation purposes only and does not show details of land gradients, boundary treatments or lighting. The plan has been prepared with care, and it is our intention to build in accordance with this plan, but there may be occasions when boundaries, footpaths and landscaping may change during the building process. Please check with our Sales Negotiator for up-to-date details of your chosen property prior to reservation.



HAYFORD MILLS

Cambusbarron

FK7 9PN

The Tummel

GROUND FLOOR
2 bedroom apartment

BLOCK B
Plots 4, 5, 10 & 11

Selected plots opposite hand

Total area **54.03 m² 581.36 sq ft**



Kitchen/Lounge	6.02	x	4.10	19' 9"	x	13' 5"
Bedroom 1	3.05	x	4.23	10' 0"	x	13' 11"
Bedroom 2	2.00	x	3.00	6' 7"	x	9' 10"
Bathroom	2.00	x	2.00	6' 7"	x	6' 7"

Dimensions shown for all our homes are approximate; each home is built individually and therefore precise measurements may vary from those shown, although every effort is taken to ensure dimensions are as accurate as possible. We give maximum dimensions that include fitted wardrobes, sloping ceilings, bay windows, and any other features. Measurements should not be relied upon for ordering or fitting carpets, floor coverings and all other fitted goods. Computer generated images – individual features, specification and elevational treatments may vary at the discretion of Allanwater Homes, but only to a similar or higher standard. Consequently, these particulars do not form part of any contract.



HAYFORD MILLS

Cambusbarron

FK7 9PN



The Earn

FIRST & SECOND FLOOR
2 bedroom apartment

BLOCK B
Plots 6-9, 12-15

Selected plots opposite hand

Total area **56.41 m² 606.97 sq ft**



Kitchen/Lounge	6.02	x	4.10	19' 9"	x	13' 5"
Bedroom 1	3.05	x	4.23	10' 0"	x	13' 11"
Bedroom 2	2.86	x	3.00	9' 5"	x	9' 10"
Bathroom	2.00	x	2.00	6' 7"	x	6' 7"

Dimensions shown for all our homes are approximate; each home is built individually and therefore precise measurements may vary from those shown, although every effort is taken to ensure dimensions are as accurate as possible. We give maximum dimensions that include fitted wardrobes, sloping ceilings, bay windows, and any other features. Measurements should not be relied upon for ordering or fitting carpets, floor coverings and all other fitted goods. Computer generated images – individual features, specification and elevational treatments may vary at the discretion of Allanwater Homes, but only to a similar or higher standard. Consequently, these particulars do not form part of any contract.



HAYFORD MILLS

Cambusbarron

FK7 9PN

BLOCK C

Plots 24, 26 & 28

The Tweed

GROUND, FIRST & SECOND FLOOR
2 bedroom apartment

Total area **60.43 m² 650.23 sq ft**



Lounge	4.85 x 3.28	15' 11" x 10' 9"
Kitchen	2.96 x 2.60	9' 9" x 8' 6"
Bedroom 1	3.33 x 3.34	10' 11" x 11' 0"
Bedroom 2	2.99 x 3.34	9' 10" x 11' 0"
Bathroom	2.00 x 2.00	6' 7" x 6' 7"

Dimensions shown for all our homes are approximate; each home is built individually and therefore precise measurements may vary from those shown, although every effort is taken to ensure dimensions are as accurate as possible. We give maximum dimensions that include fitted wardrobes, sloping ceilings, bay windows, and any other features. Measurements should not be relied upon for ordering or fitting carpets, floor coverings and all other fitted goods. Computer generated images – individual features, specification and elevational treatments may vary at the discretion of Allanwater Homes, but only to a similar or higher standard. Consequently, these particulars do not form part of any contract.



HAYFORD MILLS

Cambusbarron

FK7 9PN

BLOCK C

Plots 23, 25 & 27



The Forth

GROUND, FIRST & SECOND FLOOR
2 bedroom apartment

Total area **70 m² 753.20 sq ft**

Lounge	5.90 x 3.71	19' 4" x 12' 2"
Kitchen	2.96 x 2.58	9' 9" x 8' 6"
Bedroom 1	3.06 x 3.71	10' 0" x 12' 2"
En suite	2.17 x 2.38	7' 2" x 7' 10"
Bedroom 2	3.33 x 2.57	11' 0" x 8' 5"
Bathroom	1.97 x 2.00	6' 5" x 6' 7"



Dimensions shown for all our homes are approximate; each home is built individually and therefore precise measurements may vary from those shown, although every effort is taken to ensure dimensions are as accurate as possible. We give maximum dimensions that include fitted wardrobes, sloping ceilings, bay windows, and any other features. Measurements should not be relied upon for ordering or fitting carpets, floor coverings and all other fitted goods. Computer generated images – individual features, specification and elevational treatments may vary at the discretion of Allanwater Homes, but only to a similar or higher standard. Consequently, these particulars do not form part of any contract.



The Deveron

3 bedroom TOWNHOUSE

HAYFORD MILLS

Cambusbarron

FK7 9PN

Block A Plots 1, 2, 3

Block C Plots 16, 17, 18, 19, 20, 21, 22

Block D Plots 29, 30, 31, 32, 34

Total area **129.18 m²** **1389.98 sq ft**



Dimensions shown for all our homes are approximate; each home is built individually and therefore precise measurements may vary from those shown, although every effort is taken to ensure dimensions are as accurate as possible. We give maximum dimensions that include fitted wardrobes, sloping ceilings, bay windows, and any other features. Measurements should not be relied upon for ordering or fitting carpets, floor coverings and all other fitted goods. Computer generated images – individual features, specification and elevational treatments may vary at the discretion of Allanwater Homes, but only to a similar or higher standard. Consequently, these particulars do not form part of any contract.

ALLANWATER.co.uk
H O M E S

GROUND FLOOR



GROUND FLOOR

Family/Bedroom 3	3.02 x 4.17	9' 11" x 13' 8"
Shower Room	1.90 x 2.15	6' 3" x 7' 1"
Utility	2.77 x 2.00	9' 1" x 6' 7"

FIRST FLOOR

Lounge	5.08 x 3.34	16' 8" x 10' 11"
Kitchen	2.90 x 2.34	9' 6" x 7' 4"
Dining	5.08 x 2.74	16' 8" x 9' 0"

SECOND FLOOR

Bedroom 1	4.38 x 3.34	14' 4" x 10' 11"
En suite	1.80 x 2.75	5' 11" x 9' 0"
Bedroom 2	2.98 x 3.00	9' 9" x 9' 10"
Bathroom	2.00 x 2.00	6' 7" x 6' 7"

FIRST FLOOR



SECOND FLOOR



The Findhorn

4 bedroom CORNER TOWNHOUSE

HAYFORD MILLS

Cambusbarron

FK7 9PN

Block D Plot 33

Total area 165.84 m² 1784.44 sq ft



Dimensions shown for all our homes are approximate; each home is built individually and therefore precise measurements may vary from those shown, although every effort is taken to ensure dimensions are as accurate as possible. We give maximum dimensions that include fitted wardrobes, sloping ceilings, bay windows, and any other features. Measurements should not be relied upon for ordering or fitting carpets, floor coverings and all other fitted goods. Computer generated images – individual features, specification and elevational treatments may vary at the discretion of Allanwater Homes, but only to a similar or higher standard. Consequently, these particulars do not form part of any contract.

ALLANWATER.co.uk
HOMES

GROUND FLOOR



GROUND FLOOR

Family/Bedroom 4	3.02 x 4.17	9' 11" x 13' 8"
Shower room	1.90 x 2.15	6' 3" x 7' 1"
Utility	3.30 x 2.00	10' 10" x 6' 7"

FIRST FLOOR

Study	2.90 x 4.10	9' 6" x 13' 5"
Lounge	7.87 x 4.49	25' 10" x 14' 9"
Kitchen/Dining	5.42 x 3.93	17' 9" x 12' 11"

SECOND FLOOR

Bedroom 1	4.25 x 4.12	13' 11" x 13' 6"
En suite	1.80 x 2.75	5' 11" x 9' 0"
Bedroom 2	3.95 x 3.10	13' 0" x 10' 2"
Bedroom 3	3.10 x 3.34	10' 2" x 10' 11"
Bathroom	2.00 x 2.00	6' 7" x 6' 7"

FIRST FLOOR



SECOND FLOOR

