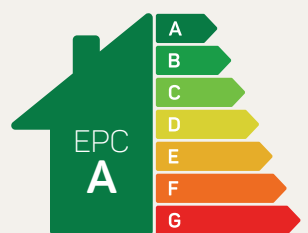




The Evesham

4 bed detached

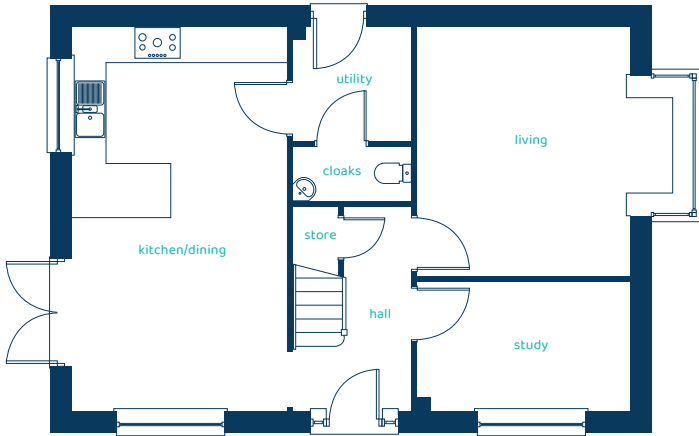
Superb design and ample space make this four-bedroom home ideal for families. With high ceilings and impressive proportions, it offers plenty of room to relax. Beautiful windows brighten the cosy living room, and the kitchen/diner's French doors open to the rear garden. The Evesham also includes a downstairs study, perfect for home working. Upstairs, four double bedrooms provide space for everyone, with an en-suite in the main bedroom and a family bathroom completing this spacious property.



Predicted EPC rating

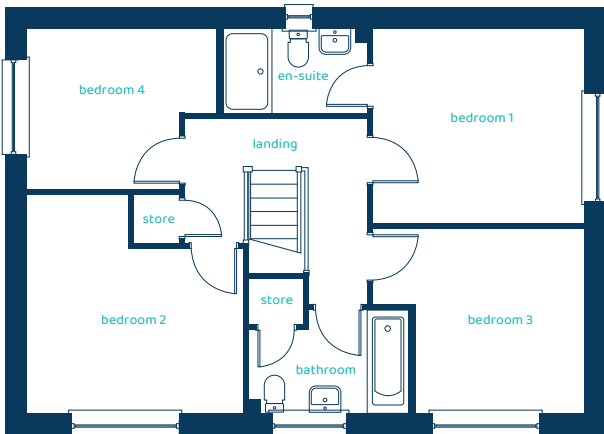


anwylhomes.co.uk



Ground Floor Plan

Room	Imperial	Metric
Kitchen/Dining	21'1" x 11'9"	6.43m x 3.57m
Living Room	14'2" x 13'9"	4.33m x 4.18m
Study	11'7" x 7'1"	3.54m x 2.16m
Utility	6'5" x 6'3"	1.95m x 1.9m
Cloaks	6'5" x 3'	1.95m x 0.92m



First Floor Plan

Room	Imperial	Metric
Bedroom 1	11'8" x 10'8"	3.55m x 3.25m
En-suite	8' x 4'7"	2.43m x 1.4m
Bedroom 2	12' x 11'11"	3.65m x 3.63m
Bedroom 3	11'8" x 10'2"	3.55m x 3.09m
Bedroom 4	10'5" x 8'10"	3.17m x 2.69m
Bathroom	8'10" x 5'7"	2.7m x 1.71m

The Evesham

4 bed detached

Anwyl Homes is a registered developer with the NHQB. The images on this literature are computer-generated. Specific plots may be 'handed' (mirrored), detached/semi-detached, elevation treatment/roof materials may vary, and any garages may be single or double. Room sizes are approximate, dimensions are taken from the longest room point and are for guidance only. Kitchen and bathroom layouts are indicative. These plans are correct at the time of creation but may be subject to change during construction. Please speak to your Homes Adviser for more details. HS_A_EVES_G-2_04/09/24.

