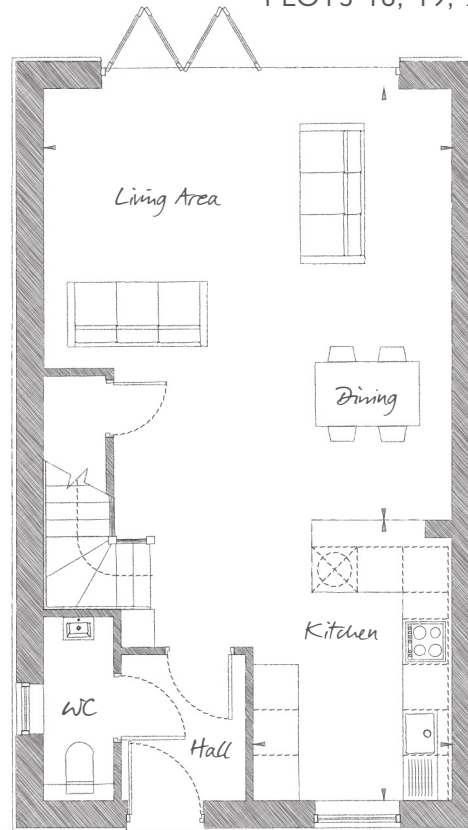


THE SWALLOW

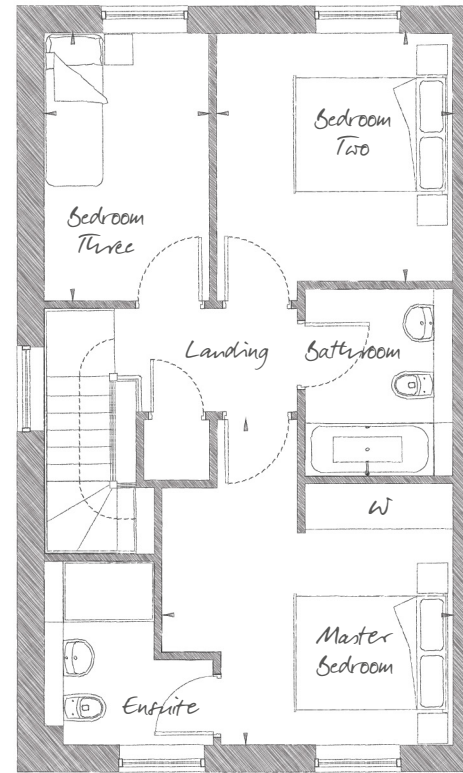
THREE BEDROOM, SEMI DETACHED/MID/END TERRACE HOUSE | 1,107 SQ FT (102.8 SQ M)

PLOTS 18, 19, 23, 24, 29, 30, 43, 44, 45, 47, 48



GROUND FLOOR

Living / Dining 18'10" x 17'9" (5.73m x 5.42m)
 Kitchen 12'3" x 8'7" (3.74m x 2.62m)



FIRST FLOOR

Master Bedroom 14'3" x 12'7" (4.33m x 3.84m)
 Bedroom Two 10'10" x 10'2" (3.30m x 3.10m)
 Bedroom Three 11'8" x 7'3" (3.56m x 2.20m)

Plots 18, 19, 23, 24, 29, 30, 47 and 48 are 1,107 sqft and semi detached. Plots 43 and 45 are 1,102 sqft and end terrace. Plot 44 is 1,104 sqft and mid terrace. In some cases, plots do not have a window to the downstairs WC and stairway. Ask our Sales Executives for further information.



01255 388612
 stosythpriority@cityandcountry.co.uk | cityandcountry.co.uk

