


*Wain*  
HOMES

A man with a beard, wearing a pink long-sleeved sweater and a yellow and brown patterned apron, is shown from the chest up, kneading dough on a wooden surface. Flour is falling through the air around him, creating a soft, ethereal atmosphere. In the foreground, there is a wooden rolling pin, several red tomatoes, and some green herbs. The background shows a kitchen with white cabinets and a stainless steel oven.

A place that lets you be you.  
That says everything about you.  
That feels good, feels right.  
Where life can be beautifully imperfect.  
And you love every moment of it.

YOUR KIND OF *perfect*

# THE PADDOCKS PHASE 3 DEVELOPMENT PLAN SECTION 1



### 3 Bedroom Homes

- The Coppice (COP)
- The Meadowvale (MEA)
- The Greendale (GRE)

### 4 Bedroom Homes

- The Highstone (HIG)
- The Hillgrove (HIL)
- The Elmhurst (ELM)

### 5 Bedroom Homes

- The Peakridge (PEA)

- Air Source Heat Pumps

- Overhead power lines

- \*** Affordable Homes

(Location of affordable homes is indicative)



Wain Homes abides by the New Homes Quality Code, an independent industry code introduced to champion quality new homes and better consumer outcomes. Wain Homes policy is continuous product and specification development. Plans and images are shown for illustrative purposes only and the final layout and development may vary from that shown. Every effort has been made to ensure the accuracy of the information provided in this leaflet at the date of publication, but it may be subject to change without notice. Please consult with our Sales Executive to obtain the current specification. You should take appropriate steps to verify any information upon which you wish to rely. These particulars are intended for guidance only and their accuracy is not guaranteed. They do not constitute a contract, part of a contract or warranty. (June 2026)



# THE PADDOCKS PHASE 3 DEVELOPMENT PLAN SECTION 2



## 2 Bedroom Homes

- The Glenside (GLE)
- The Lakeshore (LAK)

## 3 Bedroom Homes

- The Coppice (COP)
- The Meadowvale (MEA)
- The Greendale (GRE)

## 4 Bedroom Homes

- The Birchview (BIR)
- The Elmhurst (ELM)

## 5 Bedroom Homes

- The Peakridge (PEA)
- The Standish (STA)

S/S Sub Station

Air Source Heat Pumps

Overhead power lines

\* **Affordable Homes**

▲ **Pre-Sold Homes**

(Location of affordable and pre-sold homes is indicative)



Wain Homes abides by the New Homes Quality Code, an independent industry code introduced to champion quality new homes and better consumer outcomes. Wain Homes policy is continuous product and specification development. Plans and images are shown for illustrative purposes only and the final layout and development may vary from that shown. Every effort has been made to ensure the accuracy of the information provided in this leaflet at the date of publication, but it may be subject to change without notice. Please consult with our Sales Executive to obtain the current specification. You should take appropriate steps to verify any information upon which you wish to rely. These particulars are intended for guidance only and their accuracy is not guaranteed. They do not constitute a contract, part of a contract or warranty. (June 2026)



# THE PADDOCKS PHASE 3 DEVELOPMENT PLAN

## SECTION 1

## SECTION 2



<b>2 Bedroom Homes</b>		<b>4 Bedroom Homes</b>		S/S	Sub Station
	The Glenside (GLE)		The Birchview (BIR)		Air Source Heat Pumps
	The Lakeshore (LAK)		The Highstone (HIG)		Overhead power lines
<b>3 Bedroom Homes</b>			The Hillgrove (HIL)	*	<b>Affordable Homes</b>
	The Coppice (COP)		The Elmhurst (ELM)	▲	<b>Pre-Sold Homes</b>
	The Meadowvale (MEA)	<b>5 Bedroom Homes</b>		(Location of affordable and pre-sold homes is indicative)	
	The Greendale (GRE)		The Peakridge (PEA)		
			The Standish (STA)		

# THE PADDOCKS PHASE 3 SPECIFICATION

THE GLENSIDE | THE LAKESHORE | THE COPPICE | THE MEADOWVALE  
THE GREENDALE | THE BIRCHVIEW | THE ELMHURST | THE HIGHSTONE | THE HILLGROVE  
THE PEAKRIDGE | THE STANDISH

## KITCHENS

- Luxury Fitted Kitchens from our Standard Range with Soft Close Mechanisms in a Choice of Finishes\*
- Laminated Worktops to Kitchen and Utility with Matching Upstands in a Choice of Finishes\*
- 1 ½ Bowl Inset Stainless Steel Sink and Tap to the Kitchen
- AEG Stainless Steel Single Oven (2 and 3 Bed Homes Only)
- AEG Stainless Steel Double Oven (4 and 5 Bed Homes Only)
- AEG 4 Ring Induction Hob with Glass Splashback in a Choice of Colours and Extractor Hood
- AEG Stainless Steel Integrated Microwave (5 Bed Homes Only)
- Electrolux Integrated Fridge Freezer (2, 3 and 4 Bed Homes Only)
- Electrolux Full Height Integrated Fridge (5 Bed Homes Only)
- Electrolux Full Height Integrated Freezer (5 Bed Homes Only)
- Electrolux Integrated Dishwasher
- Electrolux Integrated Washing Machine
- White Downlights to Kitchen
- Pelmet Lighting to Kitchen

## BATHROOMS

- Roca Vanity Unit to Bathroom and En-Suite 1 in a Choice of Finishes\*
- Roca Gap Sanitaryware to Cloakroom and En-Suite in White with Semi Pedestals and Soft Close Seats
- Roca Gap Bath
- Aqualisa Downtown Brassware
- Aqualisa Mian 2-way Mixer Shower with Ceiling Drencher and Adjustable Hose to Shower Cubicles
- Roman Haven Shower Cubicles
- Aqualisa Mian 3-way Mixer Shower with Wall Drencher, Adjustable Hose and Fixed Screen to Baths with no Separate Shower Cubicle
- Bathrooms and En-Suites to be Half-Tiled throughout with a Choice from our Tileflair Standard Range\*
- Shower Cubicles to be Fully-Tiled with a Choice from our Tileflair Standard Range\*
- Half-Height Tiling to all Sanitaryware Walls in Cloakroom with a Choice from our Tileflair Standard Range\*
- White Heated Towel Rail to Bathroom and En-Suites
- White Downlights to Bathrooms and En-Suites
- White Shaver Socket to Bathrooms and En-Suites

## HEATING SYSTEM

- Air Source Heat Pump with Hot Water Cylinder and Single Room Thermostat

## OTHER INTERNAL FEATURES

- Amtico First LVT Flooring to Kitchen, Dining, Utility, Bathrooms, En-Suites and Cloakrooms in a Choice of Finishes\*
- Carpets from our Standard Range to all other areas in a Choice of Finishes\*
- All Ceilings to be Painted White
- All Walls to be Painted White
- All Woodwork to be Finished in White Satinwood
- Staircase, including Newel Posts and Spindles to be Finished in White Satinwood
- All Handrails and Newel Caps to be Finished in Oak
- Vertical 5-Panel Oak Veneer Doors with Chrome Effect Door Furniture
- Spacepro Fitted Wardrobes with Sliding Doors to Bedroom 1+
- Ultrafast Hard Wired Fibre Broadband\*\*
- White Sockets and Switches throughout
- CAT6 Data Point to Lounge, Bedroom 1 and Study
- Television Aerial Socket to Lounge and Bedroom 1
- Telephone Point to Lounge
- Hard Wired Smoke Detectors and Heat Detectors with Battery Backup
- White USB sockets to Kitchen, Lounge, Family Room and all Bedrooms
- System 3 Ventilation System

## EXTERNAL FEATURES

- White PVCu Windows and Rear, Side and French Doors
- White Aluminium Bi-Fold Doors (5 Bed Homes Only)
- White PVCu Fascias and Soffits
- Black Rainwater Goods
- Agate Grey Front Door and Garage Doors
- External PIR Lights to Front and Rear
- EV Car Charging Point
- Power and Lighting to all Garages
- External Tap
- Gardens Landscaped to Front
- Gardens Turfed to Rear
- 1.8m Close Boarded Divisional Fencing to Rear Garden^

## WARRANTIES

- 10-Year NHBC Buildmark Warranty
- 2-Year Wain Homes Warranty

\*Upgraded Choices available. \*\*Ultrafast Fibre is the latest in broadband technology that sees your broadband speeds faster than ever before - the next generation of internet, as fibre optic technology evolves, you'll already have everything you need in your property to get the benefits. Please note these services may be not fully active at completion stage until the relevant works have been completed by the service provider. ^Excluding mirrors \*Unless stipulated otherwise on the working drawings.



Wain Homes abides by the New Homes Quality Code, an independent industry code introduced to champion quality new homes and better consumer outcomes. Wain Homes Policy is continuous product and specification development. Images shown are for illustrative purposes only and may include optional upgrades at an additional cost. Every effort has been made to ensure the accuracy of the information provided in this leaflet at the date of publication but it may be subject to change without notice. Specification choices are subject to build stage. Please speak to a Sales Executive on the development you are interested in to obtain further details of the specification of any particular plot and the options available to you. You should take appropriate steps to verify any information upon which you wish to rely. These particulars are intended for guidance only and their accuracy is not guaranteed. They do not constitute a contract, part of a contract or warranty. (June 2026)



# THE PADDOCKS PHASE 3 SPECIFICATION

## AFFORDABLE HOMES

### KITCHENS

- Luxury Fitted Kitchens from our Standard Range with Soft Close Mechanisms in a Choice of Finishes\*
- Laminated Worktops to Kitchen with Matching Upstands in a Choice of Finishes\*
- Single Bowl Stainless Steel Sink and Tap to Kitchen
- Electrolux Stainless Steel Single Oven
- Electrolux 4-Ring Ceramic Hob with Glass Splashback in a Choice of Colours and Extractor Hood

### BATHROOMS

- Roca Havana Sanitaryware in White with Full Pedestals and Soft Close Seats
- Roca Gap Bath
- Methven Deva Brassware
- Aqualisa Mian Mixer Shower with Round Bar Valve and Handset to all En-Suites and Over-the-Bath in all Bathrooms unless there is a Shower Cubicle within the Main Bathroom
- Roman Haven Shower Cubicles to En-Suites (where applicable)
- Full-Height Tiling around Baths with a Choice from our Tileflair Standard Range\* when Over-Bath Shower is Installed. Half-Height Tiling around Baths without a Shower
- Fixed Rail and Shower Curtain around the Bath (if Over-Bath Shower Installed)
- Shower Cubicles to be Fully-Tiled with a Choice from our Tileflair Standard Range\*
- Splashback Tiling behind the Sink to Bathrooms and Cloakrooms with a Choice from our Tileflair Standard Range\*

### HEATING SYSTEM

- Air Source Heat Pump with Hot Water Cylinder and Single Room Thermostat

### OTHER INTERNAL FEATURES

- All Ceilings to be Painted White
- All Walls to be Painted White
- All Woodwork to be Finished in White Satinwood
- Staircase, including Newel Posts, Handrails, Newel Caps and Spindles to be Finished in White Satinwood
- Vertical 5-Panel Internal Doors to be Finished in White Satinwood with Chrome Effect Door Furniture
- Ultrafast Hard Wired Fibre Broadband\*\*
- White Sockets and Switches throughout
- Television Aerial Socket to Lounge
- Telephone Point to Lounge
- Hard Wired Smoke Detectors with Battery Backup
- System 3 Ventilation System

### EXTERNAL FEATURES

- White PVCu Windows and Rear/Side/French Doors
- White PVCu Fascias and Soffits
- Black Rainwater Goods
- Agate Grey Front Door
- External PIR Light to Front
- EV Car Charging Point
- Gardens Turfed to Front
- 1.8m Close Boarded Divisional Fencing to Rear Garden^

### WARRANTIES

- 10-Year NHBC Buildmark Warranty
- 2-Year Wain Homes Warranty

\*Upgraded Choices available. \*\*Ultrafast Fibre is the latest in broadband technology that sees your broadband speeds faster than ever before – the next generation of internet, as fibre optic technology evolves, you'll already have everything you need in your property to get the benefits. Please note these services may be not fully active at completion stage until the relevant works have been completed by the service provider. ^Unless stipulated otherwise on the working drawings.



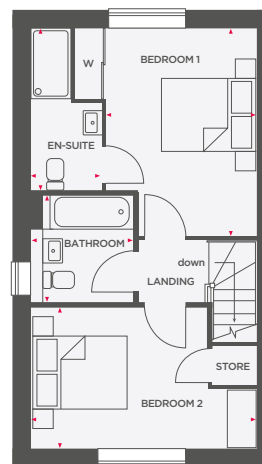
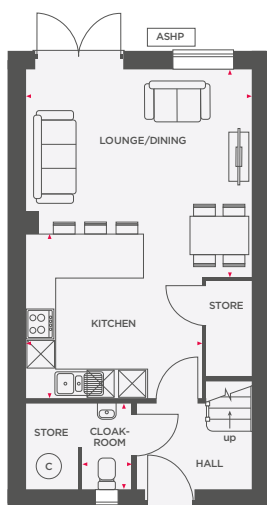
Wain Homes abides by the New Homes Quality Code, an independent industry code introduced to champion quality new homes and better consumer outcomes. Wain Homes Policy is continuous product and specification development. Images shown are for illustrative purposes only and may include optional upgrades at an additional cost. Every effort has been made to ensure the accuracy of the information provided in this leaflet at the date of publication but it may be subject to change without notice. Specification choices are subject to build stage. Please speak to a Sales Executive on the development you are interested in to obtain further details of the specification of any particular plot and the options available to you. You should take appropriate steps to verify any information upon which you wish to rely. These particulars are intended for guidance only and their accuracy is not guaranteed. They do not constitute a contract, part of a contract or warranty. (June 2026)





# THE GLENSIDE

## 2 BEDROOM SEMI DETACHED/TERRACE HOME



Lounge/Dining	4618 x 4233 (max)	15'2" x 13'11" (max)
Kitchen	3606 x 3370	11'10" x 11'1"
Cloakroom	1002 x 1752	3'3" x 5'9"

Bedroom 1	3084 x 4228 (max)	10'1" x 13'10" (max)
En-Suite	1445 (max) x 3288 (max)	4'9" (max) x 10'9" (max)
Bedroom 2	4618 (max) x 2885	15'2" (max) x 9'6"
Bathroom	2088 (max) x 2187	6'10" (max) x 7'2"

Total Area	79.72 m <sup>2</sup>	858 ft <sup>2</sup>
------------	----------------------	---------------------

ASHP Air Source Heat Pump    Integrated appliance    Hot water cylinder    Wardrobe



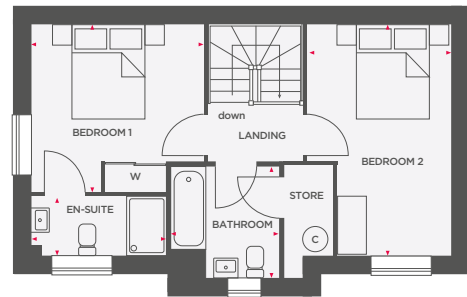
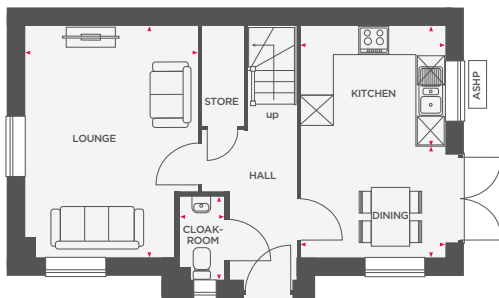
**Wain Homes abides by the New Homes Quality Code, an independent industry code introduced to champion quality new homes and better consumer outcomes.** Computer generated images are representative and used for illustrative purposes only. Dimensions shown are internal finished dimensions which may vary as each home is built individually and the precise internal finishes may not always be the same. Please be aware that window and door positions could vary due to plot orientation. It is essential to view the working drawings with our Sales Executive for plot specific detail. Enquire for further information. Wain Homes Policy is continuous product and specification development. Every effort has been made to ensure the accuracy of the information provided at the date of publication but it may be subject to change without notice. Please consult with our Sales Executive to obtain the current specification. You should take appropriate steps to verify any information upon which you wish to rely. The sizes indicated are not intended to be used for carpet sizes, appliance spaces or items of furniture. Elevational treatments may vary to those shown. These particulars are intended for guidance only and their accuracy is not guaranteed. They do not constitute a contract, part of a contract or warranty. (June 2026)





# THE LAKESHORE

## 2 BEDROOM SEMI-DETACHED/END TERRACE HOME



Lounge	4730 (max) x 3512 (max)	15'6" (max) x 11'6" (max)
Kitchen	2450 x 2888	8'0" x 9'6"
Dining	2280 x 2888	7'6" x 9'6"
Cloakroom	1681 x 900	5'6" x 2'11"

Bedroom 1	3429 x 3512	11'3" x 11'6"
En-Suite	1213 x 2752	4'0" x 9'0"
Bedroom 2	4730 (max) x 2950	15'6" (max) x 9'8"
Bathroom	2265 x 2194 (max)	7'5" x 7'2" (max)

Total Area	83.8 m <sup>2</sup>	902 ft <sup>2</sup>
------------	---------------------	---------------------

ASHP Air Source Heat Pump    Integrated appliance    Hot water cylinder    Wardrobe



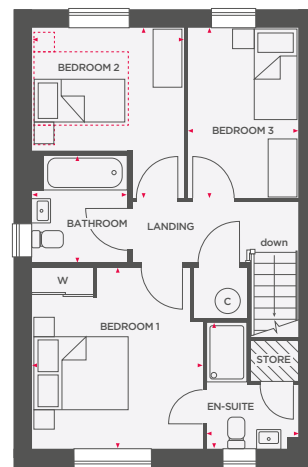
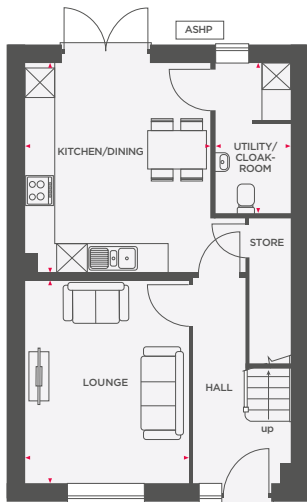
**Wain Homes abides by the New Homes Quality Code, an independent industry code introduced to champion quality new homes and better consumer outcomes.** Computer generated images are representative and used for illustrative purposes only. Dimensions shown are internal finished dimensions which may vary as each home is built individually and the precise internal finishes may not always be the same. Please be aware that window and door positions could vary due to plot orientation. It is essential to view the working drawings with our Sales Executive for plot specific detail. Enquire for further information. Wain Homes Policy is continuous product and specification development. Every effort has been made to ensure the accuracy of the information provided at the date of publication but it may be subject to change without notice. Please consult with our Sales Executive to obtain the current specification. You should take appropriate steps to verify any information upon which you wish to rely. The sizes indicated are not intended to be used for carpet sizes, appliance spaces or items of furniture. Elevational treatments may vary to those shown. These particulars are intended for guidance only and their accuracy is not guaranteed. They do not constitute a contract, part of a contract or warranty. (June 2026)





# THE COPPICE

3 BEDROOM DETACHED/SEMI-DETACHED/TERRACE HOME



Lounge	3328 x 4132	10'11" x 13'7"
Kitchen/Dining	3775 x 4291	12'5" x 14'1"
Utility/Cloakroom	1542 x 3070 (max)	5'1" x 10'1" (max)

Bedroom 1	3458 (max) x 3672 (max)	11'4" (max) x 12'1" (max)
En-Suite	1877 x 2552 (max)	6'2" x 8'4" (max)
Bedroom 2	3074 x 3450 (max)	10'1" x 11'4" (max)
Bedroom 3	2249 x 3450	7'5" x 11'5"
Bathroom	1930 (max) x 2164	6'4" (max) x 7'1"

Total Area	93.62 m <sup>2</sup>	1007 ft <sup>2</sup>
------------	----------------------	----------------------

ASHP Air Source Heat Pump    Integrated appliance    Hot water cylinder    W Wardrobe    Limited use area    Room size suitable for a double bed



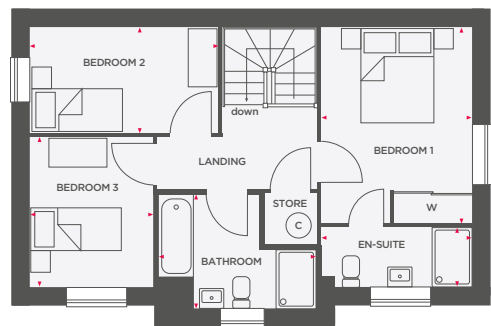
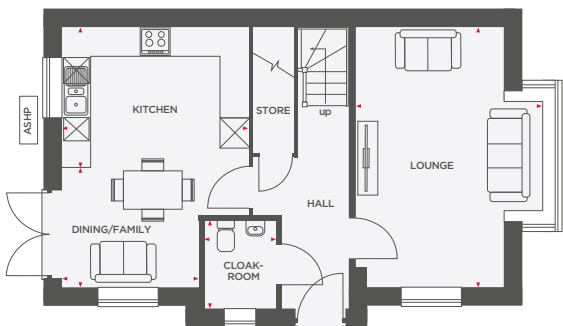
**Wain Homes abides by the New Homes Quality Code, an independent industry code introduced to champion quality new homes and better consumer outcomes.** Computer generated images are representative and used for illustrative purposes only. Dimensions shown are internal finished dimensions which may vary as each home is built individually and the precise internal finishes may not always be the same. Please be aware that window and door positions could vary due to plot orientation. It is essential to view the working drawings with our Sales Executive for plot specific detail. Enquire for further information. Wain Homes Policy is continuous product and specification development. Every effort has been made to ensure the accuracy of the information provided at the date of publication but it may be subject to change without notice. Please consult with our Sales Executive to obtain the current specification. You should take appropriate steps to verify any information upon which you wish to rely. The sizes indicated are not intended to be used for carpet sizes, appliance spaces or items of furniture. Elevational treatments may vary to those shown. These particulars are intended for guidance only and their accuracy is not guaranteed. They do not constitute a contract, part of a contract or warranty. (June 2026)





# THE MEADOWVALE

3 BEDROOM DETACHED/SEMI-DETACHED/END-TERRACE HOME



Lounge	3798 (max) x 5310	12'5" (max) x 17'5"
Kitchen	3840 x 2890	12'7" x 9'6"
Dining/Family	2815 x 2420	9'3" x 7'11"
Cloakroom	1473 x 1800	4'10" x 5'11"

Bedroom 1	3072 x 3992 (max)	10'1" x 13'1" (max)
En-Suite	3072 x 1212	10'1" x 4'0"
Bedroom 2	3840 x 2170	12'7" x 7'1"
Bedroom 3	2511 x 3052	8'3" x 10'0"
Bathroom	3229 (max) x 2332 (max)	10'7" (max) x 7'8" (max)

<b>Total Area</b>	<b>100.7 m<sup>2</sup></b>	<b>1083 ft<sup>2</sup></b>
-------------------	----------------------------	----------------------------

ASHP Air Source Heat Pump    Integrated appliance    Hot water cylinder    Wardrobe



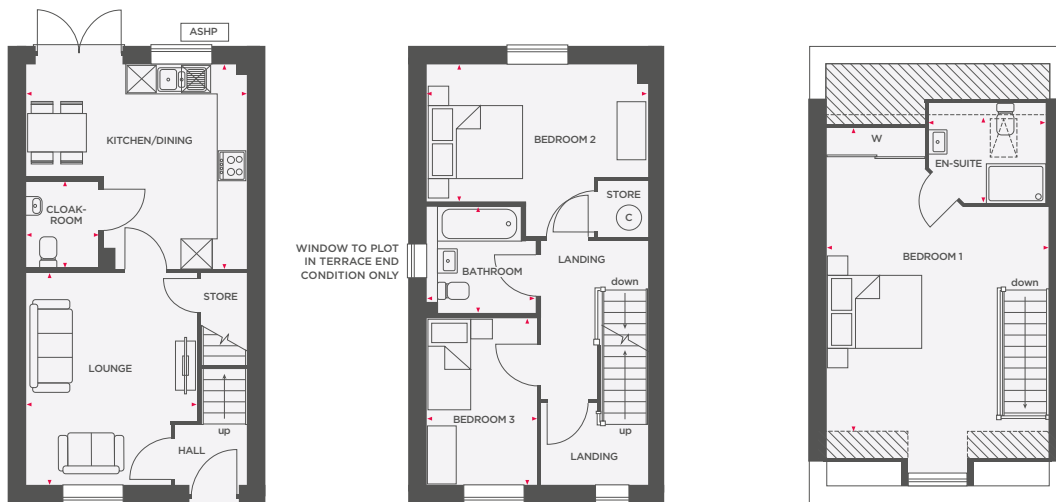
**Wain Homes abides by the New Homes Quality Code, an independent industry code introduced to champion quality new homes and better consumer outcomes.** Computer generated images are representative and used for illustrative purposes only. Dimensions shown are internal finished dimensions which may vary as each home is built individually and the precise internal finishes may not always be the same. Please be aware that window and door positions could vary due to plot orientation. It is essential to view the working drawings with our Sales Executive for plot specific detail. Enquire for further information. Wain Homes Policy is continuous product and specification development. Every effort has been made to ensure the accuracy of the information provided at the date of publication but it may be subject to change without notice. Please consult with our Sales Executive to obtain the current specification. You should take appropriate steps to verify any information upon which you wish to rely. The sizes indicated are not intended to be used for carpet sizes, appliance spaces or items of furniture. Elevational treatments may vary to those shown. These particulars are intended for guidance only and their accuracy is not guaranteed. They do not constitute a contract, part of a contract or warranty. (June 2026)





# THE GREENDALE

## 3 BEDROOM SEMI DETACHED/TERRACE HOME



Lounge	3478 (max) x 4324 (max)	11'5" (max) x 14'2" (max)
Kitchen/Dining	4506 (max) x 4161 (max)	14'9" (max) x 13'8" (max)
Cloakroom	1470 x 1800	4'10" x 5'11"

Bedroom 2	4506 x 2798	14'9" x 9'2"
Bedroom 3	2235 x 3399	7'4" x 11'2"
Bathroom	2217 (max) x 2164 (max)	7'3" (max) x 7'1" (max)

Bedroom 1	4506 (max) x 6350 (max)	14'9" (max) x 20'10" (max)
En-Suite	2372 x 1828	7'9" x 6'0"

<b>Total Area</b>	<b>109.1 m<sup>2</sup></b>	<b>1174 ft<sup>2</sup></b>
-------------------	----------------------------	----------------------------

ASHP Air Source Heat Pump    Integrated appliance    Hot water cylinder    Wardrobe    Limited use area



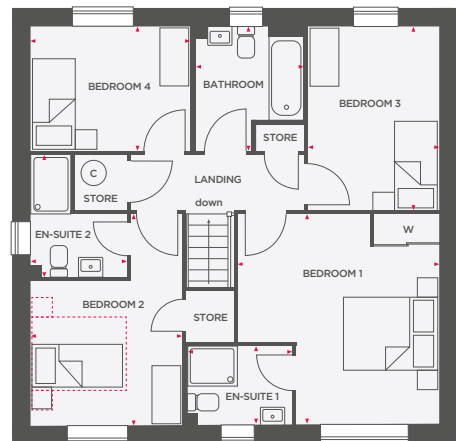
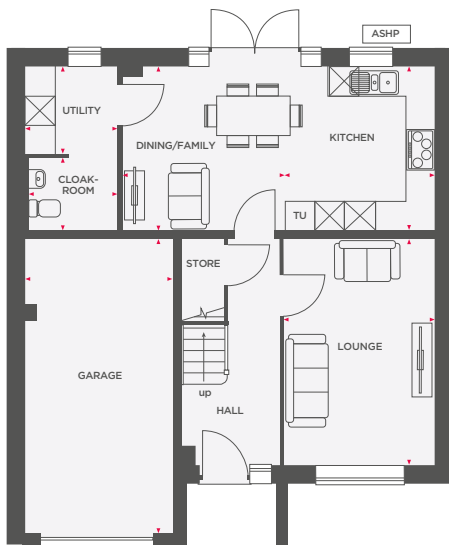
**Wain Homes abides by the New Homes Quality Code, an independent industry code introduced to champion quality new homes and better consumer outcomes.** Computer generated images are representative and used for illustrative purposes only. Dimensions shown are internal finished dimensions which may vary as each home is built individually and the precise internal finishes may not always be the same. Please be aware that window and door positions could vary due to plot orientation. It is essential to view the working drawings with our Sales Executive for plot specific detail. Enquire for further information. Wain Homes Policy is continuous product and specification development. Every effort has been made to ensure the accuracy of the information provided at the date of publication but it may be subject to change without notice. Please consult with our Sales Executive to obtain the current specification. You should take appropriate steps to verify any information upon which you wish to rely. The sizes indicated are not intended to be used for carpet sizes, appliance spaces or items of furniture. Elevational treatments may vary to those shown. These particulars are intended for guidance only and their accuracy is not guaranteed. They do not constitute a contract, part of a contract or warranty. (June 2026)





# THE BIRCHVIEW

4 BEDROOM DETACHED HOME WITH INTEGRAL GARAGE



Lounge	3074 x 4625	10'11" x 15'2"
Kitchen	3050 x 3348	10'0" x 11'0"
Dining/Family	3310 x 3348	10'10" x 11'0"
Utility	1882 x 1760	6'2" x 5'9"
Cloakroom	1814 x 1482	5'11" x 4'10"
Garage	3034 x 5998	9'11" x 19'8"

Bedroom 1	4074 (max) x 4288	13'4" (max) x 14'1"
En-Suite 1	2129 x 1599	7'0" x 5'3"
Bedroom 2	3098 x 2918	10'2" x 9'7"
En-Suite 2	1965 (max) x 2484 (max)	6'5" (max) x 8'2" (max)
Bedroom 3	2676 x 3747	8'9" x 12'4"
Bedroom 4	3275 x 2546	10'9" x 8'4"
Bathroom	2187 (max) x 2528 (max)	7'2" (max) x 8'4" (max)

Total Area	140.95 m <sup>2</sup>	1517 ft <sup>2</sup>
------------	-----------------------	----------------------

ASHP Air Source Heat Pump    Integrated appliance    TU Tall Unit    Hot water cylinder    W Wardrobe    Room size suitable for a double bed



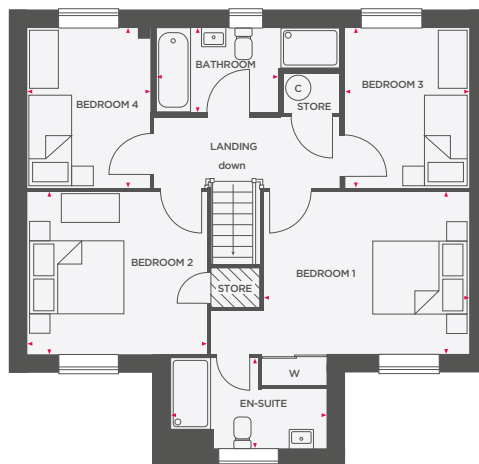
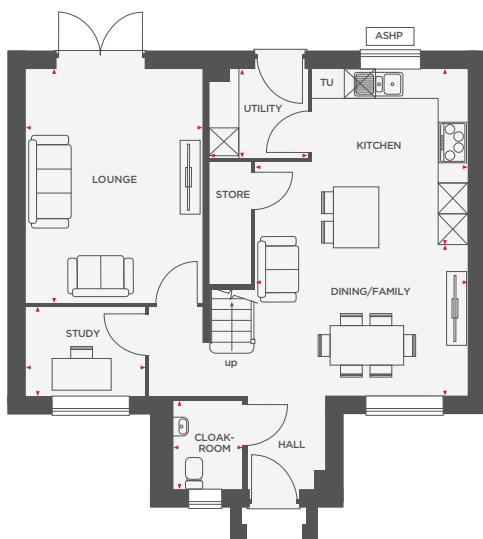
**Wain Homes abides by the New Homes Quality Code, an independent industry code introduced to champion quality new homes and better consumer outcomes.** Computer generated images are representative and used for illustrative purposes only. Dimensions shown are internal finished dimensions which may vary as each home is built individually and the precise internal finishes may not always be the same. Please be aware that window and door positions could vary due to plot orientation. It is essential to view the working drawings with our Sales Executive for plot specific detail. Enquire for further information. Wain Homes Policy is continuous product and specification development. Every effort has been made to ensure the accuracy of the information provided at the date of publication but it may be subject to change without notice. Please consult with our Sales Executive to obtain the current specification. You should take appropriate steps to verify any information upon which you wish to rely. The sizes indicated are not intended to be used for carpet sizes, appliance spaces or items of furniture. Elevational treatments may vary to those shown. These particulars are intended for guidance only and their accuracy is not guaranteed. They do not constitute a contract, part of a contract or warranty. (June 2026)





# THE ELMHURST

4 BEDROOM DETACHED HOME WITH DETACHED GARAGE



Lounge	3607 x 4772	11'10" x 15'8"
Kitchen	4354 (max) x 3589	14'3" (max) x 11'9"
Dining/Family	4354 (max) x 3071	14'3" (max) x 10'1"
Utility	1992 x 1800 (max)	6'6" x 5'11" (max)
Study	2485 x 1800	7'9" x 8'2"
Cloakroom	1459 x 1807	4'9" x 5'11"

Bedroom 1	5265 (max) x 3319	17'3" (max) x 10'11"
En-Suite	3173 (max) x 1807 (max)	10'5" (max) x 5'11" (max)
Bedroom 2	3670 x 3319	12'0" x 10'11"
Bedroom 3	2531 x 3253	8'4" x 10'8"
Bedroom 4	2505 x 3253	8'3" x 10'8"
Bathroom	3774 (max) x 1901	12'5" (max) x 6'3"

<b>Total Area</b>	<b>133.09 m<sup>2</sup></b>	<b>1432 ft<sup>2</sup></b>
-------------------	-----------------------------	----------------------------

ASHP Air Source Heat Pump    Integrated appliance    TU Tall Unit    Hot water cylinder    W Wardrobe    Limited use area



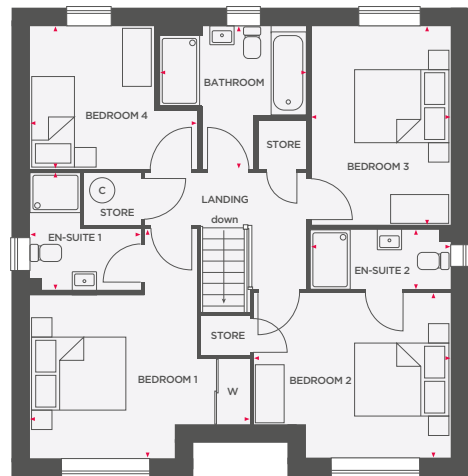
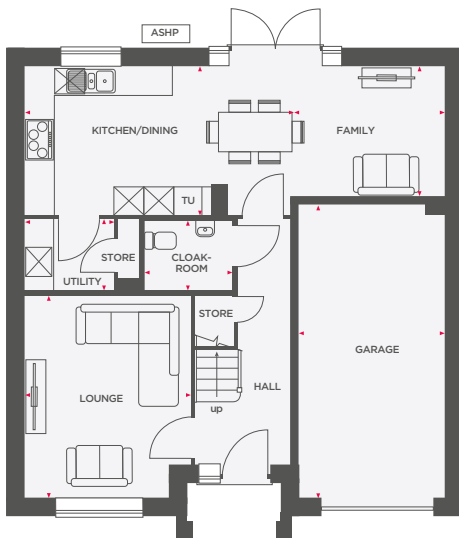
**Wain Homes abides by the New Homes Quality Code, an independent industry code introduced to champion quality new homes and better consumer outcomes.** Computer generated images are representative and used for illustrative purposes only. Dimensions shown are internal finished dimensions which may vary as each home is built individually and the precise internal finishes may not always be the same. Please be aware that window and door positions could vary due to plot orientation. It is essential to view the working drawings with our Sales Executive for plot specific detail. Enquire for further information. Wain Homes Policy is continuous product and specification development. Every effort has been made to ensure the accuracy of the information provided at the date of publication but it may be subject to change without notice. Please consult with our Sales Executive to obtain the current specification. You should take appropriate steps to verify any information upon which you wish to rely. The sizes indicated are not intended to be used for carpet sizes, appliance spaces or items of furniture. Elevational treatments may vary to those shown. These particulars are intended for guidance only and their accuracy is not guaranteed. They do not constitute a contract, part of a contract or warranty. (June 2026)

**Wain**  
HOMES



# THE HIGHSTONE

4 BEDROOM DETACHED HOME WITH INTEGRAL GARAGE



Lounge	3393 (max) x 4126	11'2" (max) x 13'6"
Kitchen/Dining	3011 x 5420	9'11" x 17'9"
Family	2645 x 3153	8'8" x 10'4"
Utility	1854 (max) x 1468 (max)	6'1" (max) x 4'10" (max)
Cloakroom	1800 x 1450	5'11" x 4'9"
Garage	3000 x 6000	9'10" x 19'8"

Bedroom 1	4456 (max) x 4655 (max)	14'7" (max) x 15'3" (max)
En-Suite 1	2242 (max) x 2365 (max)	7'4" (max) x 7'9" (max)
Bedroom 2	4030 (max) x 3343	13'3" (max) x 11'0"
En-Suite 2	1212 x 2858	4'0" x 9'5"
Bedroom 3	2858 x 4050	9'5" x 13'3"
Bedroom 4	2908 x 3403 (max)	9'6" x 11'2" (max)
Bathroom	2908 (max) x 2977 (max)	9'6" (max) x 9'9" (max)

<b>Total Area</b>	<b>147.61 m<sup>2</sup></b>	<b>1597 ft<sup>2</sup></b>
-------------------	-----------------------------	----------------------------

ASHP Air Source Heat Pump    ☒ Integrated appliance    © Hot water cylinder    W Wardrobe



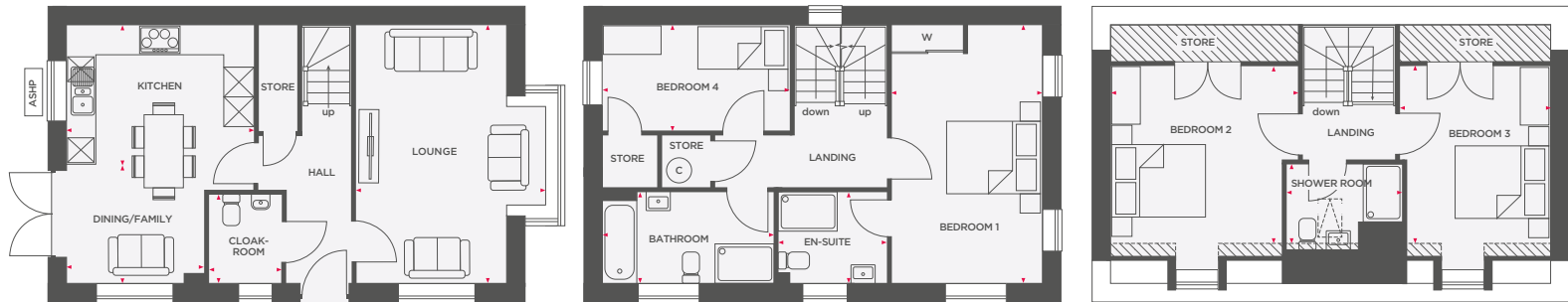
**Wain Homes abides by the New Homes Quality Code, an independent industry code introduced to champion quality new homes and better consumer outcomes.** Computer generated images are representative and used for illustrative purposes only. Dimensions shown are internal finished dimensions which may vary as each home is built individually and the precise internal finishes may not always be the same. Please be aware that window and door positions could vary due to plot orientation. It is essential to view the working drawings with our Sales Executive for plot specific detail. Enquire for further information. Wain Homes Policy is continuous product and specification development. Every effort has been made to ensure the accuracy of the information provided at the date of publication but it may be subject to change without notice. Please consult with our Sales Executive to obtain the current specification. You should take appropriate steps to verify any information upon which you wish to rely. The sizes indicated are not intended to be used for carpet sizes, appliance spaces or items of furniture. Elevational treatments may vary to those shown. These particulars are intended for guidance only and their accuracy is not guaranteed. They do not constitute a contract, part of a contract or warranty. (June 2026)





# THE HILLGROVE

## 4 BEDROOM DETACHED HOME WITH DETACHED GARAGE



Lounge	3813 (max) x 5310	12'6" (max) x 17'5"
Kitchen	3850 (max) x 2870	12'8" (max) x 9'5"
Dining/Family	2831 x 2440	9'3" x 8'0"
Cloakroom	1464 x 1807	4'10" x 5'11"

Bedroom 1	3088 x 5310	10'2" x 17'5"
En-Suite	2240 x 1889	7'4" x 6'2"
Bedroom 4	3832 x 2175	12'7" x 7'2"
Bathroom	3502 x 1871	11'6" x 6'2"

Bedroom 2	3850 (max) x 3649	12'8" (max) x 12'0"
Bedroom 3	3088 (max) x 3649	10'2" (max) x 12'0"
Shower Room	2372 x 1631 (max)	7'9" x 5'4" (max)

<b>Total Area</b>	<b>132.32 m<sup>2</sup></b>	<b>1435 ft<sup>2</sup></b>
-------------------	-----------------------------	----------------------------

ASHP Air Source Heat Pump    Integrated appliance    Hot water cylinder    Wardrobe    Limited use area



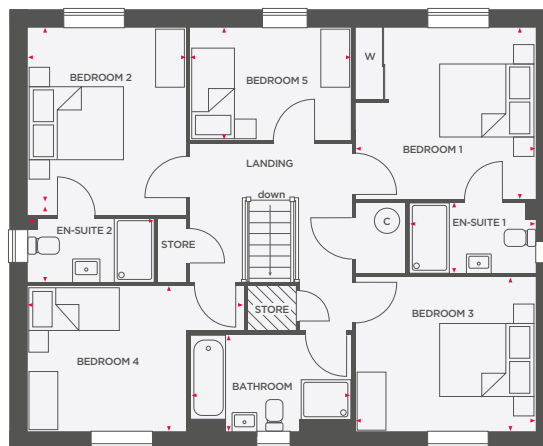
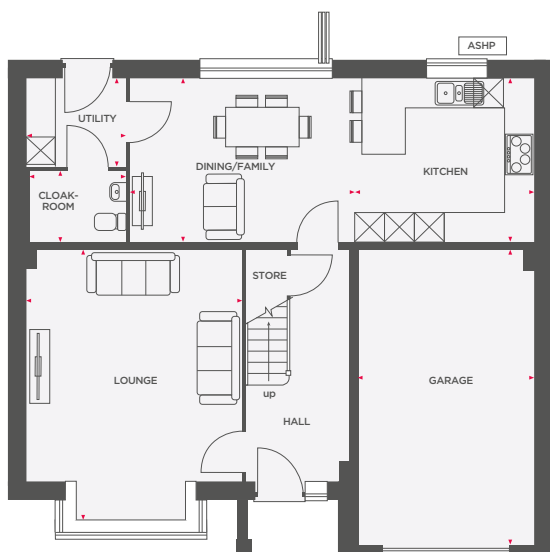
**Wain Homes abides by the New Homes Quality Code, an independent industry code introduced to champion quality new homes and better consumer outcomes.** Computer generated images are representative and used for illustrative purposes only. Dimensions shown are internal finished dimensions which may vary as each home is built individually and the precise internal finishes may not always be the same. Please be aware that window and door positions could vary due to plot orientation. It is essential to view the working drawings with our Sales Executive for plot specific detail. Enquire for further information. Wain Homes Policy is continuous product and specification development. Every effort has been made to ensure the accuracy of the information provided at the date of publication but it may be subject to change without notice. Please consult with our Sales Executive to obtain the current specification. You should take appropriate steps to verify any information upon which you wish to rely. The sizes indicated are not intended to be used for carpet sizes, appliance spaces or items of furniture. Elevational treatments may vary to those shown. These particulars are intended for guidance only and their accuracy is not guaranteed. They do not constitute a contract, part of a contract or warranty. (June 2026)





# THE PEAKRIDGE

5 BEDROOM DETACHED HOME WITH INTEGRAL GARAGE



Lounge	4405 x 5528	14'5" x 18'2"
Kitchen	3670 x 3345	12'0" x 11'0"
Utility	2036 x 1790	6'8" x 5'10"
Dining/Family	4579 x 3345	15'0" x 11'0"
Cloakroom	2018 x 1450	6'7" x 4'9"
Garage	3620 x 6000	11'11" x 19'8"

Bedroom 1	3672 x 3477	12'1" x 11'5"
En-Suite 1	2584 x 1430	8'6" x 4'8"
Bedroom 2	3226 x 3552	10'7" x 11'8"
En-Suite 2	2580 x 1530	8'6" x 5'0"
Bedroom 3	3672 x 3134	12'1" x 10'3"
Bedroom 4	4405 (max) x 2960	14'5" (max) x 9'9"
Bedroom 5	3263 x 2299	10'8" x 7'6"
Bathroom	3254 x 1950	10'8" x 6'5"

<b>Total Area</b>	<b>155.9 m<sup>2</sup></b>	<b>1678 ft<sup>2</sup></b>
-------------------	----------------------------	----------------------------

ASHP Air Source Heat Pump    ☒ Integrated appliance    © Hot water cylinder    W Wardrobe



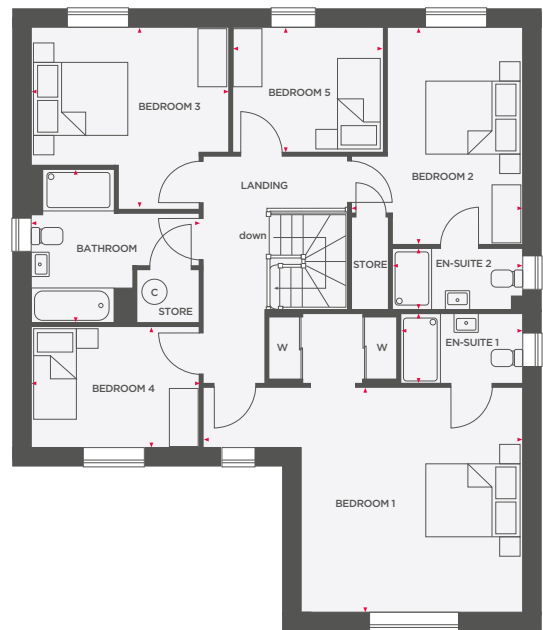
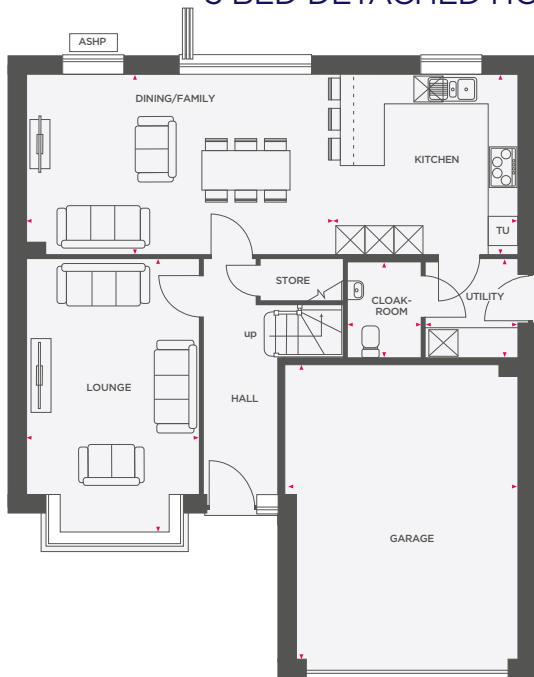
**Wain Homes abides by the New Homes Quality Code, an independent industry code introduced to champion quality new homes and better consumer outcomes.** Computer generated images are representative and used for illustrative purposes only. Dimensions shown are internal finished dimensions which may vary as each home is built individually and the precise internal finishes may not always be the same. Please be aware that window and door positions could vary due to plot orientation. It is essential to view the working drawings with our Sales Executive for plot specific detail. Enquire for further information. Wain Homes Policy is continuous product and specification development. Every effort has been made to ensure the accuracy of the information provided at the date of publication but it may be subject to change without notice. Please consult with our Sales Executive to obtain the current specification. You should take appropriate steps to verify any information upon which you wish to rely. The sizes indicated are not intended to be used for carpet sizes, appliance spaces or items of furniture. Elevational treatments may vary to those shown. These particulars are intended for guidance only and their accuracy is not guaranteed. They do not constitute a contract, part of a contract or warranty. (June 2026)





# THE STANDISH

5 BED DETACHED HOME WITH INTEGRAL DOUBLE GARAGE



Lounge	3528 x 5571	11'7" x 18'3"
Kitchen	3776 x 3640	12'5" x 11'11"
Dining/Family	6259 x 3640	20'6" x 11'11"
Utility	1894 x 1957	6'3" x 6'5"
Cloakroom	1464 x 1889	4'10" x 6'2"
Garage	4762 (max) x 6024	15'7" (max) x 19'9"

Bedroom 1	4585 x 6514 (max)	15'0" x 21'4" (max)
En-Suite 1	1426 x 2479	4'8" x 8'2"
Bedroom 2	3482 (max) x 4429	11'5" (max) x 14'6"
En-Suite 2	1212 x 2659	4'0" x 8'9"
Bedroom 3	3707 (max) x 4029	12'2" (max) x 13'3"
Bedroom 4	2450 x 3434	8'0" x 11'3"
Bedroom 5	2548 x 3044	8'4" x 10'0"
Bathroom	3087 (max) x 3434 (max)	10'2" (max) x 11'3" (max)

<b>Total Area</b>	<b>205.68 m<sup>2</sup></b>	<b>2214 ft<sup>2</sup></b>
-------------------	-----------------------------	----------------------------

ASHP Air Source Heat Pump  Integrated appliance  
 TU Tall Unit  Hot water cylinder W Wardrobe



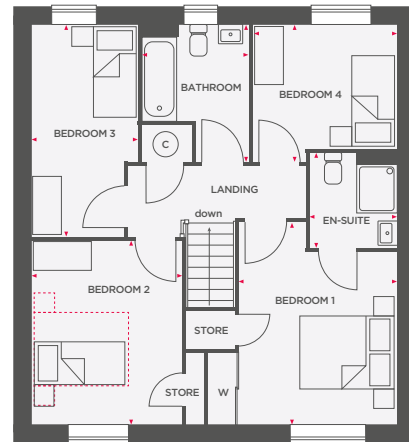
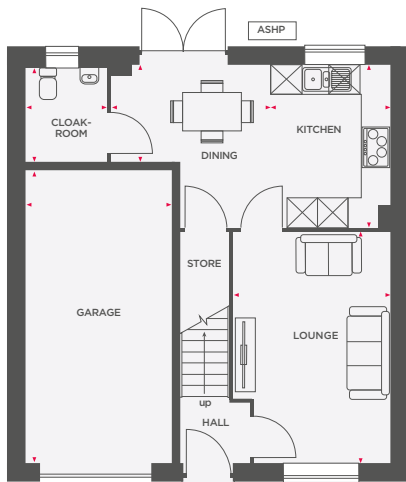
**Wain Homes abides by the New Homes Quality Code, an independent industry code introduced to champion quality new homes and better consumer outcomes.** Computer generated images are representative and used for illustrative purposes only. Dimensions shown are internal finished dimensions which may vary as each home is built individually and the precise internal finishes may not always be the same. Please be aware that window and door positions could vary due to plot orientation. It is essential to view the working drawings with our Sales Executive for plot specific detail. Enquire for further information. Wain Homes Policy is continuous product and specification development. Every effort has been made to ensure the accuracy of the information provided at the date of publication but it may be subject to change without notice. Please consult with our Sales Executive to obtain the current specification. You should take appropriate steps to verify any information upon which you wish to rely. The sizes indicated are not intended to be used for carpet sizes, appliance spaces or items of furniture. Elevational treatments may vary to those shown. These particulars are intended for guidance only and their accuracy is not guaranteed. They do not constitute a contract, part of a contract or warranty. (June 2026)





# THE ASHDENE

4 BEDROOM DETACHED HOME WITH INTEGRAL GARAGE



Lounge	3212 x 4720	10'6. x 15'6.
Kitchen	2450 x 3315	8'0. x 10'11.
Dining	3247 x 1971	10'8. x 6'6.
Cloakroom	1645 x 1902	5'5. x 6'3.
Garage	3000 x 6000	9'10. x 19'8.

Bedroom 1	3212 x 4113 (max)	10'6" x 13'6" (max)
En-Suite	1779 x 1955 (max)	5'10" x 6'5" (max)
Bedroom 2	3065 x 3737	10'1" x 12'3"
Bedroom 3	2158 (max) x 4298 (max)	7'1" (max) x 14'1" (max)
Bedroom 4	2937 x 2784 (max)	9'8" x 9'2" (max)
Bathroom	2142 (max) x 2766 (max)	7'0" (max) x 9'1" (max)

<b>Total Area</b>	<b>103.2 m<sup>2</sup></b>	<b>1110 ft<sup>2</sup></b>
-------------------	----------------------------	----------------------------

⊗ Integrated appliance  
 ASHP Air Source Heat Pump  
 © Hot water cylinder  
 W Wardrobe  
  Room size suitable for a double bed



**Wain Homes abides by the New Homes Quality Code, an independent industry code introduced to champion quality new homes and better consumer outcomes.** Computer generated images are representative and used for illustrative purposes only. Dimensions shown are internal finished dimensions which may vary as each home is built individually and the precise internal finishes may not always be the same. Please be aware that window and door positions could vary due to plot orientation. It is essential to view the working drawings with our Sales Executive for plot specific detail. Enquire for further information. Wain Homes Policy is continuous product and specification development. Every effort has been made to ensure the accuracy of the information provided at the date of publication but it may be subject to change without notice. Please consult with our Sales Executive to obtain the current specification. You should take appropriate steps to verify any information upon which you wish to rely. The sizes indicated are not intended to be used for carpet sizes, appliance spaces or items of furniture. Elevational treatments may vary to those shown. These particulars are intended for guidance only and their accuracy is not guaranteed. They do not constitute a contract, part of a contract or warranty. (June 2026)

