

## GROUND FLOOR

### Kitchen/Dining

5.68m x 3.59m  
18' 8" x 11' 9"

### Garage

2.98m x 5.92m  
9' 9" x 19' 5"

### Living

3.55m x 5.57m max.  
11' 8" x 18' 3" max.

### Utility

1.95m x 1.72m  
6' 5" x 5' 8"

## FIRST FLOOR

### Bedroom 1

3.55m max. x 4.46m max.  
11' 8" max. x 14' 7" max.

### Bedroom 4

3.44m x 2.41m  
11' 3" x 7' 11"

### En Suite

2.03m x 1.62m  
6' 8" x 5' 4"

### Bathroom

2.13m max. x 3.60m max.  
7' 0" max. x 11' 10" max.

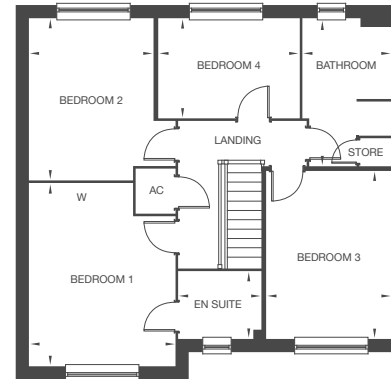
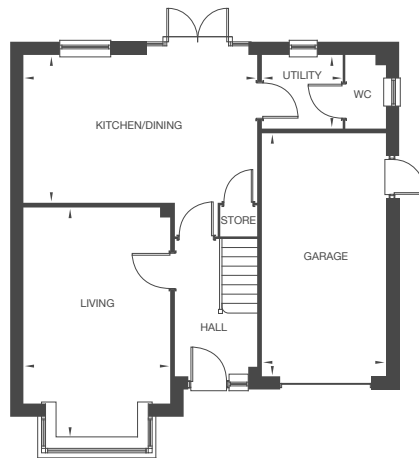
### Bedroom 2

3.03m max. x 3.93m max.  
9' 11" max. x 12' 11" max.

### Bedroom 3

3.02m x 4.10m  
9' 11" x 13' 5"

TOTAL AREA = 125.60m<sup>2</sup> 1352ft<sup>2</sup>



Information shown is for guidance only. These particulars should not be relied upon to accurately describe any aspect of the property. Although every care has been taken to ensure that information is correct, floor layout, dimensions and specification details shown are indicative only and may have been updated since this brochure was printed. Contents of this brochure do not constitute a contract, part of a contract or warranty. Please check site plan for plot handings and speak to a Sales Advisor to review full working drawings.