



The Harrogate

Four Bedroom Home





The Harrogate

Four Bedroom Home

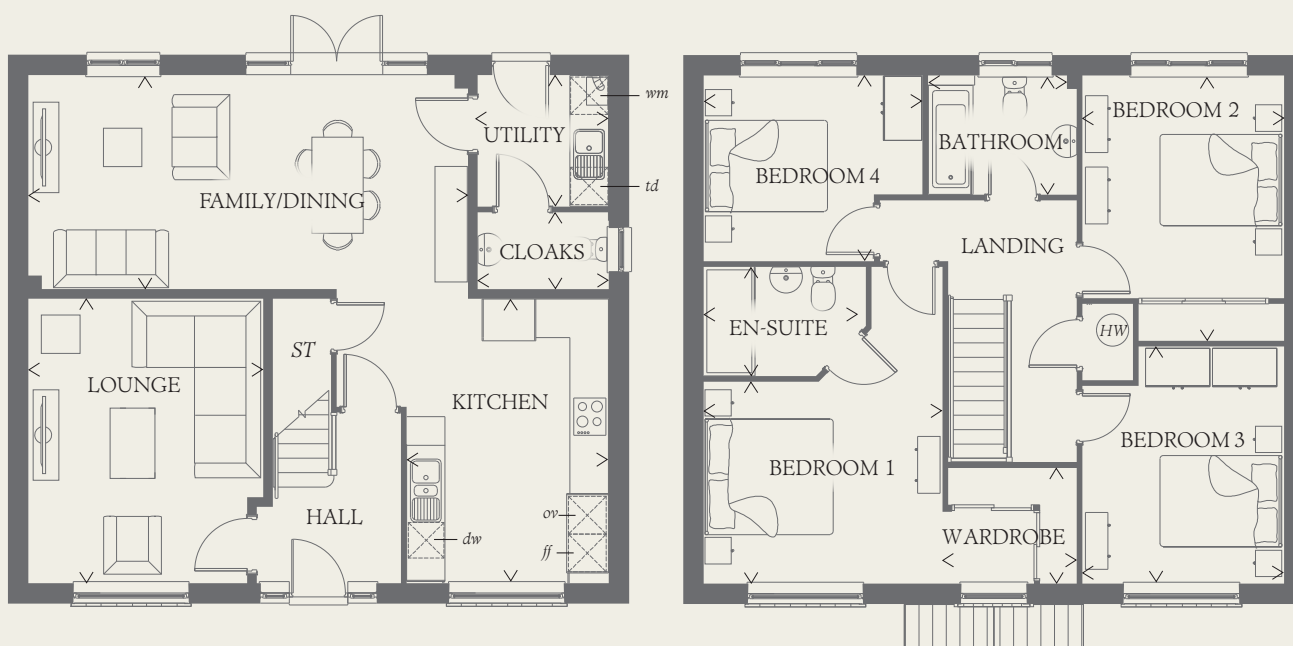




The Harrogate

Four Bedroom Home

The unique design of the doorway tells you just how much effort has gone into the creation of the Harrogate by craftsmen who care. It's touches like these that make your house into a home, transforming the ordinary into the extraordinary.



GROUND FLOOR

FAMILY/ DINING	22'5" x 10'11"	6.84 x 3.33 m
LOUNGE	14'6" x 12'0"	4.43 x 3.65 m
KITCHEN	14'6" x 10'4"	4.43 x 3.15 m
CLOAKS	6'8" x 3'11"	2.04 x 1.20 m
UTILITY	6'9" x 6'8"	2.05 x 2.04 m

FIRST FLOOR

BEDROOM 1	12'2" x 10'4"	3.72 x 3.15 m
EN-SUITE	8'4" x 5'7"	2.53 x 1.71 m
WARDROBE	6'10" x 5'11"	2.09 x 1.81 m
BEDROOM 2	13'7" x 10'2"	4.13 x 3.11 m
BEDROOM 3	12'1" x 10'2"	3.69 x 3.11 m
BEDROOM 4	11'2" x 9'6"	3.40 x 2.89 m
BATHROOM	7'7" x 6'1"	2.31 x 1.86 m

CONSUMER CODE FOR HOME BUILDERS

www.consumercode.co.uk

Customers should note this illustration is an example of the Harrogate house type. All dimensions indicated are approximate and the furniture layout is for illustrative purposes only. Homes may be 'handed' (mirror image) versions of the illustrations, and may be detached, semi-detached or terraced. Materials used may differ from plot to plot including render and roof tile colours. Detailed plans and specifications are available for inspection for each plot at our Sales Centre during working hours and customers must check their individual specifications prior to making a reservation.

KEY

Hob	<i>td</i> Tumble dryer space
<i>ov</i> Oven	Hot water cylinder
<i>ff</i> Fridge/freezer	<i>ST</i> Cupboard
<i>wm</i> Washing machine space	
<i>dw</i> Dishwasher space	

< Denotes where dimensions are taken from. All wardrobes are subject to site specification. Please see Sales Consultant for further details.

THINK_EF_HARR_DM.7