

Delmont



# Delmont

## Overview

The bright, beautifully planned kitchen and dining room is entered from the welcoming lounge of this comfortable and stylish home. There is a convenient downstairs WC, the principal bedroom includes an en-suite shower room, and bedroom two features dual windows and a built-in cupboard.

## Ground Floor

Lounge  
3.05m x 4.32m  
10'0" x 14'2"

Kitchen/Dining  
4.03m x 3.08m  
13'3" x 10'1"

WC  
1.50m x 1.14m  
4'11" x 3'9"

## First Floor

Principal Bedroom  
4.03m x 3.71m  
13'3" x 12'2"

En-Suite  
1.08m x 2.30m  
3'7" x 7'7"

Bedroom 2  
4.03m x 2.67m  
13'3" x 8'9"

Bathroom  
1.86m x 2.15m  
6'1" x 7'1"

## Floor Space

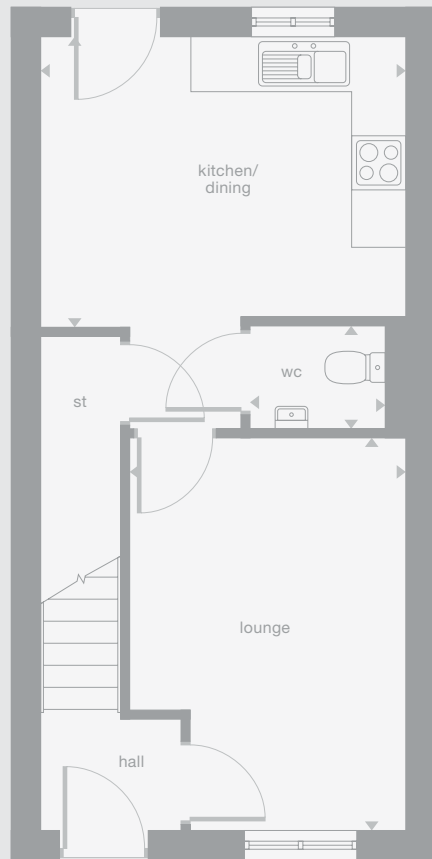
758 sq ft

† Window not applicable to all plots. Please see Development Sales Manager for details.

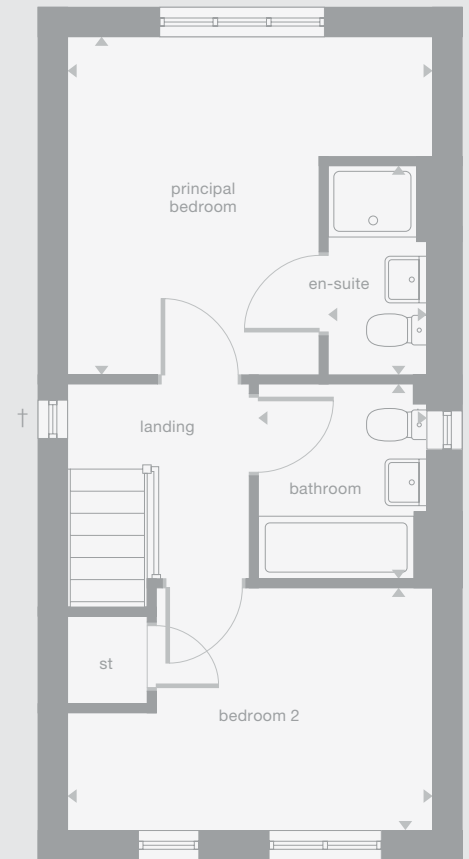


Plots may be a mirror image of the floor plans. Please see Development Sales Manager for details.

## Ground Floor



## First Floor





GREENWAY  
CHASE

We've been building homes since 1934, that's three generations of experience. We've learned a lot about people and that's made a big difference to what we do and how we do it. We're enormously proud of the homes we build, combining traditional craftsmanship with new ideas like low carbon technologies. The big difference is that we don't stop caring once we've finished the building, or when we've sold the house, or even once you've moved in. We're there when you need us, until you're settled, satisfied and inviting your friends round.



5 stars for customer  
satisfaction

#### **Development Opening Times**

Thursday - Monday  
10.30am - 5.30pm

03300 297 502

[millerhomes.co.uk](http://millerhomes.co.uk)

#### **Sat Nav**

GL53 0HZ

**miller**homes





**Overview**

Complementing a bright, comfortable lounge, the kitchen and dining room features french doors to create an airy, adaptable space. There is a laundry and a downstairs WC, while the first floor includes the bathroom and three bedrooms, one of them en-suite with built-in storage.

**Ground Floor**

Lounge  
3.53m x 4.44m  
11'7" x 14'7"

Kitchen/Dining  
3.27m x 3.80m  
10'9" x 12'6"

Laundry  
1.11m x 1.92m  
3'8" x 6'4"

WC  
1.11m x 1.78m  
3'8" x 5'10"

**First Floor**

Principal Bedroom  
2.98m x 3.23m  
9'9" x 10'7"

En-Suite  
1.18m x 1.98m  
3'10" x 6'6"

Bedroom 2  
2.37m x 3.22m  
7'10" x 10'7"

Bedroom 3  
2.00m x 2.14m  
6'7" x 7'0"

Bathroom  
2.37m x 1.70m  
7'10" x 5'7"

**Floor Space**

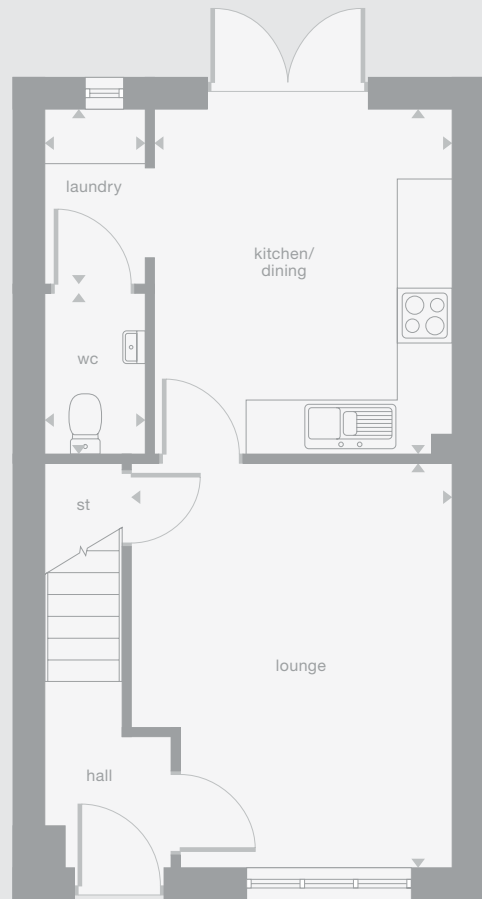
806 sq ft

† Window not applicable to all plots. Please see Development Sales Manager for details.

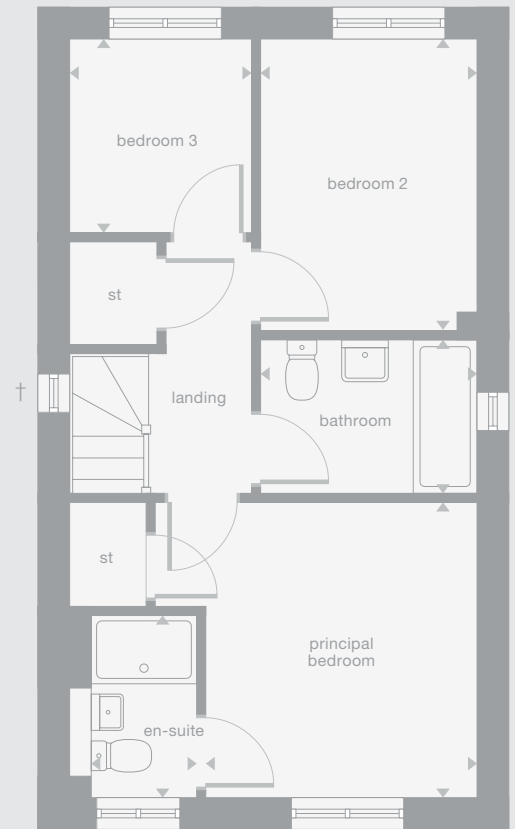
Plots may be a mirror image of the floor plans. Please see Development Sales Manager for details.



Ground Floor



First Floor





GREENWAY  
CHASE

We've been building homes since 1934, that's three generations of experience. We've learned a lot about people and that's made a big difference to what we do and how we do it. We're enormously proud of the homes we build, combining traditional craftsmanship with new ideas like low carbon technologies. The big difference is that we don't stop caring once we've finished the building, or when we've sold the house, or even once you've moved in. We're there when you need us, until you're settled, satisfied and inviting your friends round.



5 stars for customer  
satisfaction

#### **Development Opening Times**

Thursday - Monday  
10.30am - 5.30pm

03300 297 502

[millerhomes.co.uk](http://millerhomes.co.uk)

#### **Sat Nav**

GL53 0HZ

**miller**homes



Wilton



**Overview**

With dual aspect windows in the lounge and the kitchen, and french doors in the dining area, this is a delightfully light, airy home. Upstairs, in addition to the family bathroom there are three bedrooms, one of them en-suite and another with dual aspect outlooks.

**Ground Floor**

Lounge  
4.65m x 2.98m  
15'3" x 9'9"

Kitchen  
2.88m x 3.42m  
9'6" x 11'3"

Dining  
1.76m x 2.32m  
5'10" x 7'7"

WC  
1.67m x 0.99m  
5'6" x 3'3"

**First Floor**

Principal Bedroom  
3.32m x 2.98m  
10'11" x 9'9"

En-Suite  
1.00m x 2.75m  
3'4" x 9'0"

Bedroom 2  
2.53m x 3.42m  
8'4" x 11'3"

Bedroom 3  
2.02m x 2.37m  
6'8" x 11'3"

Bathroom  
1.70m x 1.96m  
5'7" x 6'5"

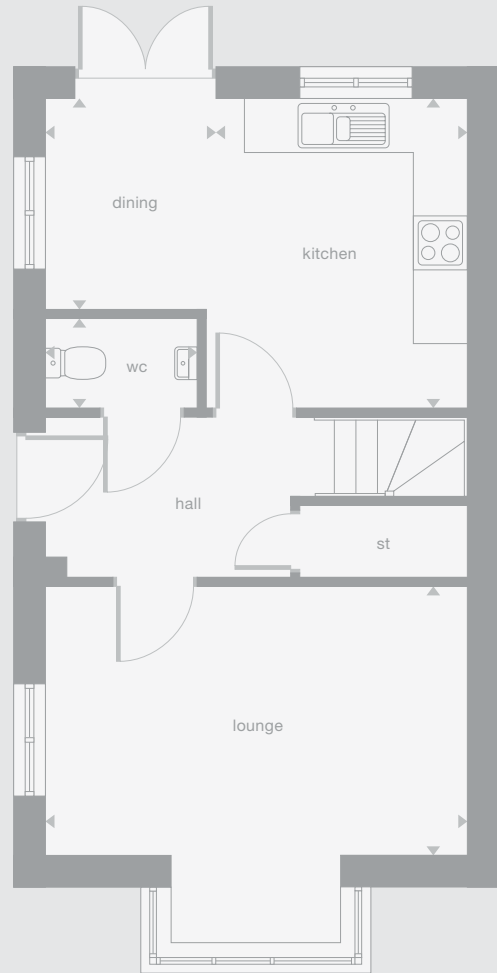
**Floor Space**

837 sq ft

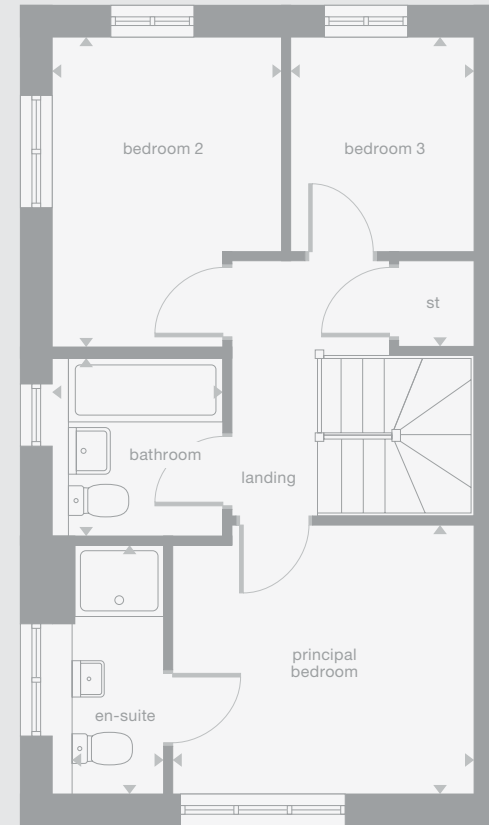
Plots may be a mirror image of the floor plans. Please see Development Sales Manager for details



**Ground Floor**



**First Floor**







GREENWAY  
CHASE

We've been building homes since 1934, that's three generations of experience. We've learned a lot about people and that's made a big difference to what we do and how we do it. We're enormously proud of the homes we build, combining traditional craftsmanship with new ideas like low carbon technologies. The big difference is that we don't stop caring once we've finished the building, or when we've sold the house, or even once you've moved in. We're there when you need us, until you're settled, satisfied and inviting your friends round.



5 stars for customer  
satisfaction

#### **Development Opening Times**

Thursday - Monday  
10.30am - 5.30pm

03300 297 502

[millerhomes.co.uk](http://millerhomes.co.uk)

#### **Sat Nav**

GL53 0HZ

**miller**homes

Whitton



# Whitton

## Overview

The bright lounge shares the ground floor with a downstairs WC and a bright kitchen where french doors add special appeal to the dining area. The family bathroom shares the first floor with three bedrooms, including a superb en-suite principal bedroom with a walk-in cupboard.

## Ground Floor

Lounge  
2.96m x 4.73m  
9'9" x 15'6"

Kitchen  
2.86m x 3.51m  
9'5" x 11'6"

Dining  
2.37m x 3.51m  
7'9" x 11'6"

WC  
1.03m x 1.63m  
3'5" x 5'4"

## First Floor

Principal Bedroom  
3.21m x 3.69m  
10'7" x 12'1"

En-Suite  
1.92m x 1.95m  
6'4" x 6'5"

Bedroom 2  
2.98m x 2.46m  
9'10" x 8'1"

Bedroom 3  
2.15m x 3.51m  
7'1" x 11'6"

Bathroom  
1.70m x 2.04m  
5'7" x 6'8"

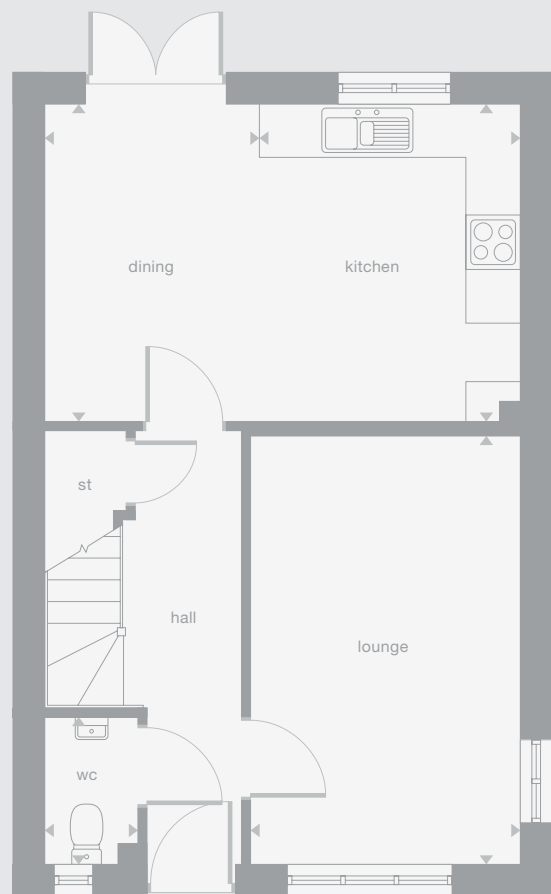
## Floor Space

947 sq ft

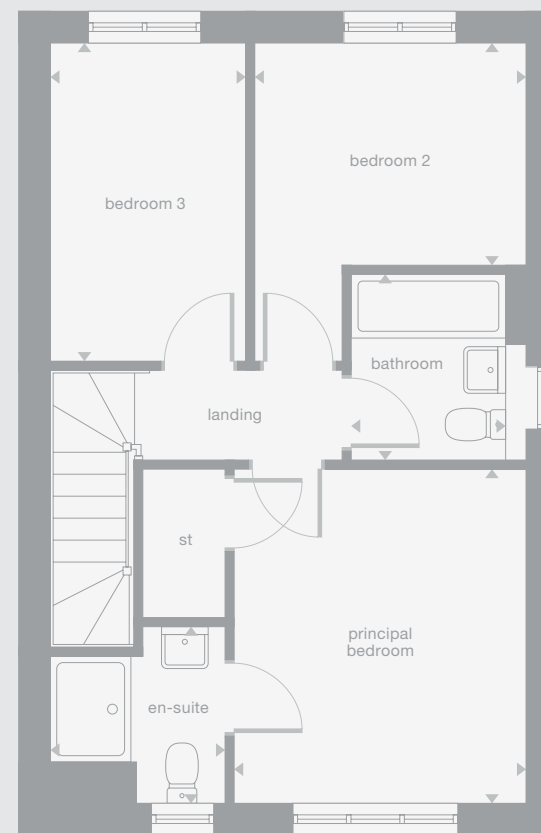
Plots may be a mirror image of the floor plans. Please see Development Sales Manager for details



## Ground Floor



## First Floor





GREENWAY  
CHASE

We've been building homes since 1934, that's three generations of experience. We've learned a lot about people and that's made a big difference to what we do and how we do it. We're enormously proud of the homes we build, combining traditional craftsmanship with new ideas like low carbon technologies. The big difference is that we don't stop caring once we've finished the building, or when we've sold the house, or even once you've moved in. We're there when you need us, until you're settled, satisfied and inviting your friends round.



5 stars for customer  
satisfaction

**Development  
Opening Times**

Thursday - Monday  
10.30am - 5.30pm

03300 297 502

[millerhomes.co.uk](http://millerhomes.co.uk)

**Sat Nav**

GL53 0HZ

**miller**homes



# Braxton



# Braxton

## Overview

Both the lounge and the dining kitchen are dual aspect, with french doors enhancing the family space. Practical touches include a laundry room, downstairs WC and generous storage space. The bright landing leads to the bathroom and three bedrooms, including an en-suite, dual aspect principal bedroom.

## Ground Floor

**Lounge**  
2.99m x 5.58m  
9'10" x 18'4"

**Kitchen/Dining**  
2.90m x 2.65m  
9'6" x 8'9"

**Laundry**  
2.09m x 1.88m  
6'10" x 6'2"

**Family**  
2.90m x 2.92m  
9'6" x 9'7"

**WC**  
1.09m x 1.55m  
3'7" x 5'1"

## First Floor

**Principal Bedroom**  
3.01m x 2.77m  
9'11" x 9'1"

**En-Suite**  
2.11m x 1.24m  
6'11" x 4'1"

**Bedroom 2**  
2.95m x 3.28m  
9'8" x 10'9"

**Bedroom 3**  
2.37m x 2.72m  
10'6" x 8'11"

**Bathroom**  
1.70m x 2.20m  
5'7" x 7'3"

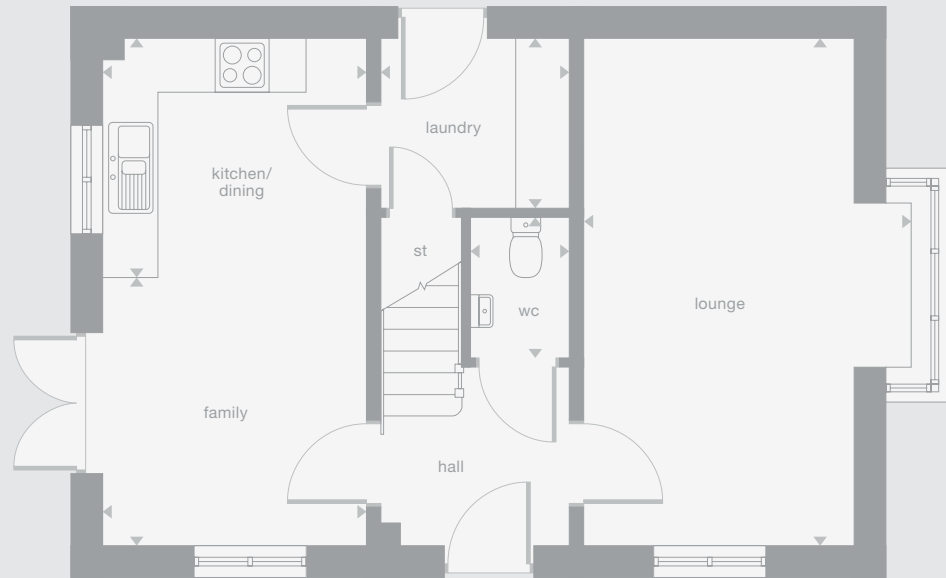
## Floor Space

996 sq ft

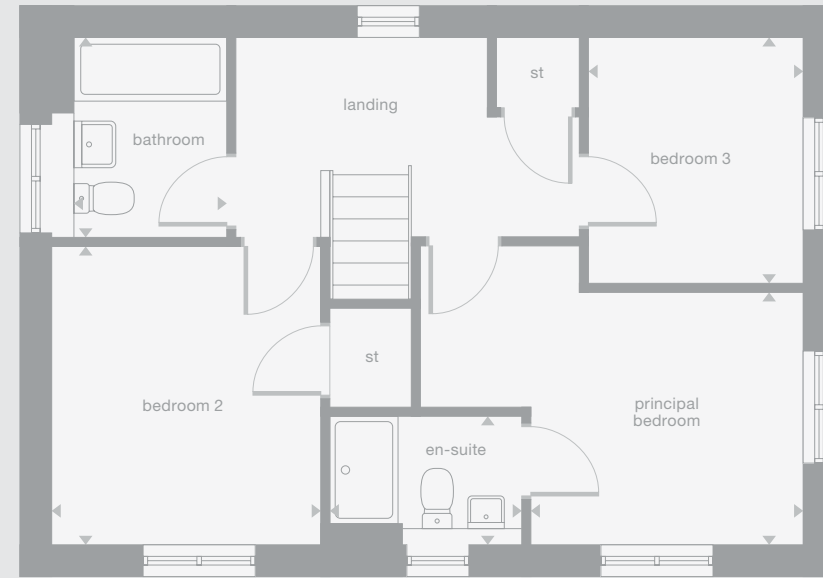
Plots may be a mirror image of the floor plans. Please see Development Sales Manager for details



Ground Floor



First Floor





GREENWAY  
CHASE

We've been building homes since 1934, that's three generations of experience. We've learned a lot about people and that's made a big difference to what we do and how we do it. We're enormously proud of the homes we build, combining traditional craftsmanship with new ideas like low carbon technologies. The big difference is that we don't stop caring once we've finished the building, or when we've sold the house, or even once you've moved in. We're there when you need us, until you're settled, satisfied and inviting your friends round.



5 stars for customer  
satisfaction

**Development  
Opening Times**

Thursday - Monday  
10.30am - 5.30pm

03300 297 502

[millerhomes.co.uk](http://millerhomes.co.uk)

**Sat Nav**

GL53 0HZ

# Portwood





# Portwood

## Overview

The magnificent dual aspect, L-shaped family room extends into the garden, and a stylish, ergonomic galley kitchen with a separate laundry. The bathroom has a separate shower, and the four bedrooms include an en-suite principal bedroom with dressing room.

## Ground Floor

Lounge  
2.93m x 4.08m  
9'7" x 13'5"

Kitchen  
3.45m x 2.70m  
11'4" x 8'10"

Laundry  
1.91m x 1.71m  
6'4" x 5'7"

Dining  
3.03m x 4.16m  
9'11" x 13'8"

Family  
3.03m x 2.76m  
9'11" x 9'1"

WC  
1.91m x 0.90m  
6'4" x 2'11"

## First Floor

Principal Bedroom  
3.14m x 2.75m  
10'4" x 9'0"

En-Suite  
1.97m x 1.55m  
6'6" x 5'1"

Dressing  
1.85m x 1.97m  
6'1" x 6'6"

Bedroom 2  
2.93m x 3.81m  
9'7" x 12'6"

Bedroom 3  
3.72m x 2.44m  
12'3" x 8'0"

Bedroom 4/Study  
2.15m x 3.02m  
7'1" x 9'11"

Bathroom  
2.05m x 1.69m  
6'9" x 5'7"

## Floor Space

1,212 sq ft

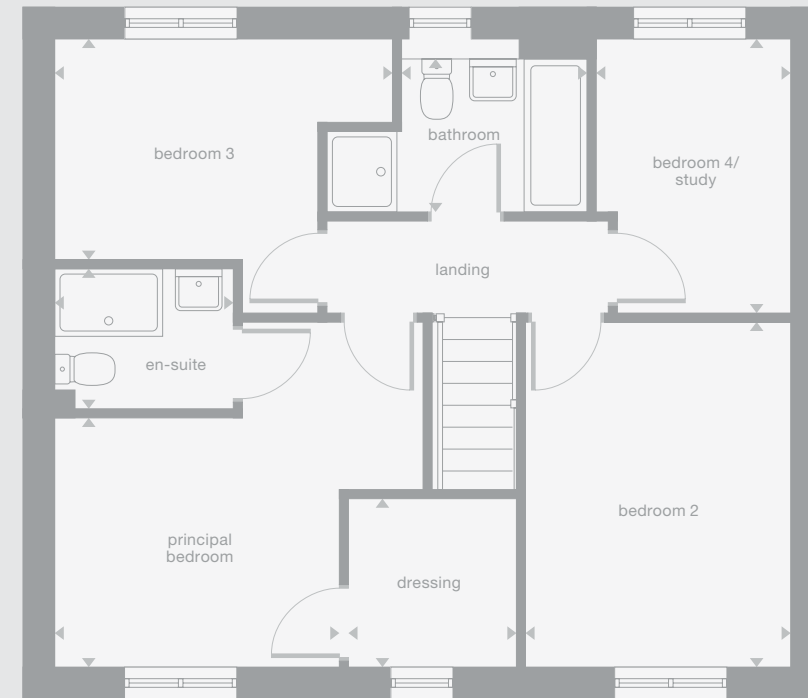
Plots may be a mirror image of the floor plans. Please see Development Sales Manager for details



Ground Floor



First Floor





GREENWAY  
CHASE

We've been building homes since 1934, that's three generations of experience. We've learned a lot about people and that's made a big difference to what we do and how we do it. We're enormously proud of the homes we build, combining traditional craftsmanship with new ideas like low carbon technologies. The big difference is that we don't stop caring once we've finished the building, or when we've sold the house, or even once you've moved in. We're there when you need us, until you're settled, satisfied and inviting your friends round.



5 stars for customer  
satisfaction

**Development  
Opening Times**

Thursday - Monday  
10.30am - 5.30pm

03300 297 502

[millerhomes.co.uk](http://millerhomes.co.uk)

**Sat Nav**

GL53 0HZ

# Norwood



# Norwood

## Overview

From the laundry that leaves the kitchen and dining room free for enjoying family time to the stylish lounge and practical study, this is a comfortable, adaptable home. A gallery landing leads to four bedrooms, one of them en-suite, and a bathroom with separate shower.

## Ground Floor

Lounge  
3.58m x 5.41m  
11'9" x 14'10"

Kitchen  
3.36m x 2.95m  
11'0" x 9'8"

Laundry  
2.06m x 1.66m  
6'9" x 5'5"

Family/Dining  
3.71m x 3.84m  
12'2" x 12'7"

Study  
2.06m x 1.96m  
6'9" x 6'5"

WC  
2.06m x 1.12m  
6'9" x 3'8"

## First Floor

Principal Bedroom  
3.58m x 3.17m  
11'9" x 10'5"

En-Suite  
2.31m x 1.30m  
7'7" x 4'3"

Bedroom 2  
3.65m x 2.73m  
12'0" x 9'0"

Bedroom 3  
3.40m x 3.15m  
11'2" x 10'4"

Bedroom 4  
3.32m x 2.72m  
10'11" x 8'11"

Bathroom  
2.57m x 1.99m  
8'5" x 6'6"

## Floor Space

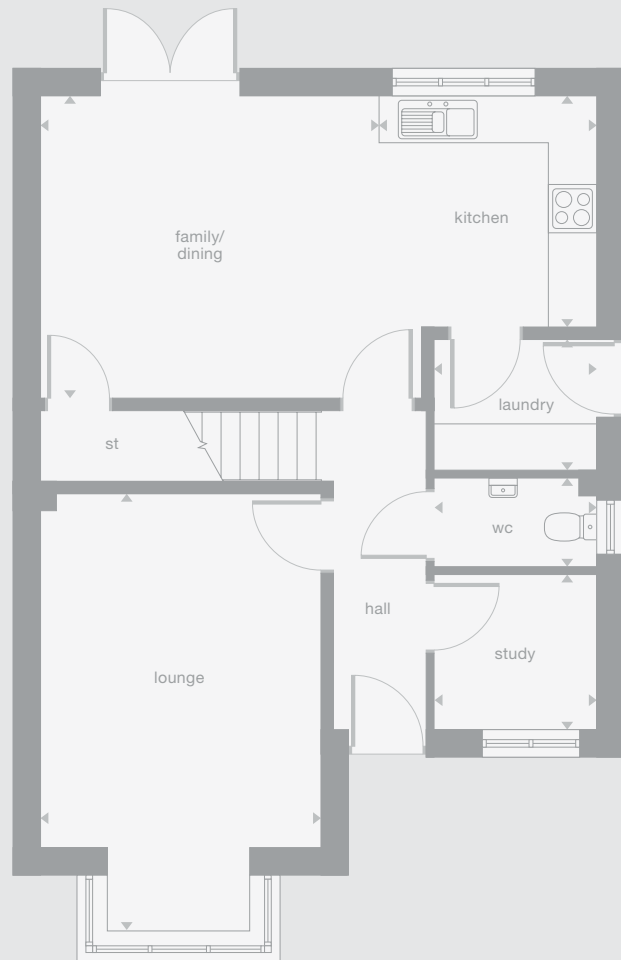
1,344 sq ft

† Window not applicable to all plots. Please see Development Sales Manager for details.

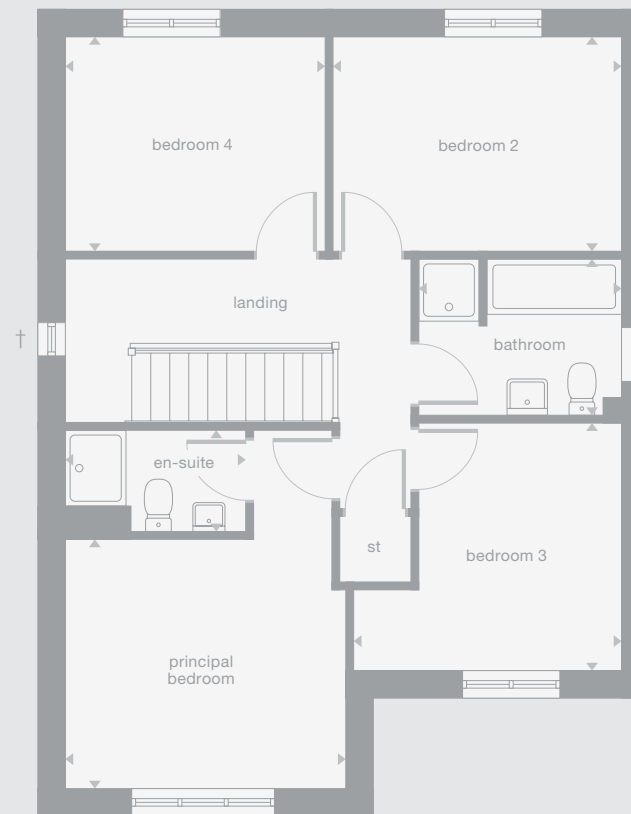
Plots may be a mirror image of the floor plans. Please see Development Sales Manager for details.



Ground Floor



First Floor







GREENWAY  
CHASE

We've been building homes since 1934, that's three generations of experience. We've learned a lot about people and that's made a big difference to what we do and how we do it. We're enormously proud of the homes we build, combining traditional craftsmanship with new ideas like low carbon technologies. The big difference is that we don't stop caring once we've finished the building, or when we've sold the house, or even once you've moved in. We're there when you need us, until you're settled, satisfied and inviting your friends round.



5 stars for customer  
satisfaction

#### Development Opening Times

Thursday - Monday  
10.30am - 5.30pm

03300 297 502

[millerhomes.co.uk](http://millerhomes.co.uk)

#### Sat Nav

GL53 0HZ

**miller**homes

Crosswood



# Crosswood

## Overview

Perfect for social events, the lounge and dining room complement a broad family kitchen that opens out to the garden. The family bathroom features a separate shower, and the four bedrooms, two of them en-suite and one with a dressing room, ensure that privacy is always available.

## Ground Floor

**Lounge**  
3.12m x 5.15m  
10'3" x 16'11"

**Kitchen**  
3.02m x 3.47m  
9'11" x 11'5"

**Laundry**  
1.76m x 1.88m  
5'9" x 6'2"

**Family/Breakfast**  
5.03m x 3.47m  
16'6" x 11'5"

**Dining**  
2.77m x 3.18m  
9'1" x 10'5"

**WC**  
0.92m x 1.88m  
3'0" x 6'2"

## First

**Principal Bedroom**  
2.91m x 3.79m  
9'7" x 12'5"

**En-Suite 1**  
1.55m x 2.02m  
5'1" x 6'8"

**Dressing**  
2.61m x 1.70m  
8'7" x 5'7"

**Bedroom 2**  
3.16m x 3.47m  
10'5" x 11'5"

**En-Suite 2**  
2.13m x 1.60m  
7'0" x 5'3"

**Bedroom 3**  
2.38m x 3.28m  
7'10" x 10'9"

**Bedroom 4**  
2.61m x 3.09m  
8'7" x 10'2"

**Bathroom**  
2.86m x 1.70m  
9'5" x 5'7"

## Floor Space

1,500 sq ft

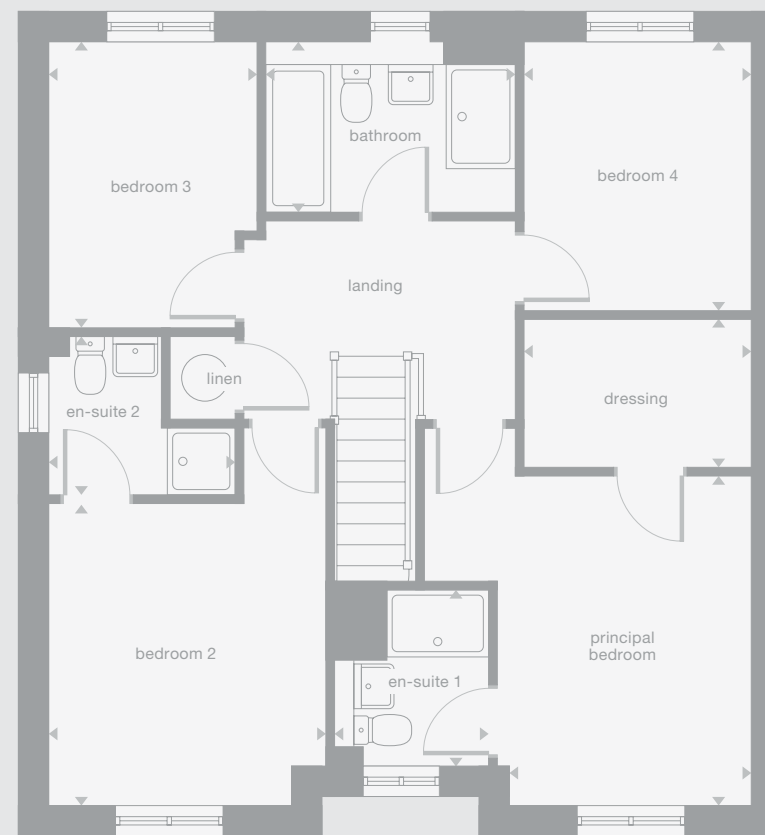
Plots may be a mirror image of the floor plans. Please see Development Sales Manager for details.



## Ground Floor



## First Floor





GREENWAY  
CHASE

We've been building homes since 1934, that's three generations of experience. We've learned a lot about people and that's made a big difference to what we do and how we do it. We're enormously proud of the homes we build, combining traditional craftsmanship with new ideas like low carbon technologies. The big difference is that we don't stop caring once we've finished the building, or when we've sold the house, or even once you've moved in. We're there when you need us, until you're settled, satisfied and inviting your friends round.



5 stars for customer  
satisfaction

**Development  
Opening Times**

Thursday - Monday  
10.30am - 5.30pm

03300 297 502

[millerhomes.co.uk](http://millerhomes.co.uk)

**Sat Nav**

GL53 0HZ



# Grayford



# Grayford

## Overview

The impressive hall introduces an outstanding residence. The study and stylish lounge complement a family kitchen and dining area with french doors. There is a laundry, a bathroom with separate shower, two of the five bedrooms have an en-suite, and one has a walk-through dressing area.

## Ground Floor

**Lounge**  
3.52m x 4.76m  
11'7" x 15'8"

**Kitchen**  
3.96m x 3.68m  
13'0" x 12'1"

**Laundry**  
2.29m x 1.68m  
7'6" x 5'6"

**Dining**  
2.68m x 5.25m  
8'10" x 12'1"

**Family**  
3.67m x 2.96m  
12'1" x 9'9"

**Study**  
3.48m x 2.27m  
11'5" x 7'6"

**WC**  
1.09m x 1.68m  
3'7" x 5'6"

## First

**Principal Bedroom**  
3.49m x 3.97m  
11'5" x 13'0"

**En-Suite**  
2.40m x 1.36m  
7'11" x 4'6"

**Dressing**  
2.40m x 2.14m  
7'11" x 7'0"

**Bedroom 2**  
3.37m x 2.64m  
11'1" x 8'8"

**En-Suite 2**  
1.18m x 2.64m  
3'10" x 8'8"

**Bedroom 3**  
3.59m x 3.26m  
11'9" x 10'8"

**Bedroom 4**  
3.05m x 3.15m  
10'0" x 10'4"

**Bedroom 5**  
2.84m x 2.64m  
9'4" x 8'8"

**Bathroom**  
2.53m x 1.79m  
8'4" x 5'11"

## Floor Space

1,885 sq ft

Plots may be a mirror image of the floor plans. Please see Development Sales Manager for details



Ground Floor



First Floor





GREENWAY  
CHASE

We've been building homes since 1934, that's three generations of experience. We've learned a lot about people and that's made a big difference to what we do and how we do it. We're enormously proud of the homes we build, combining traditional craftsmanship with new ideas like low carbon technologies. The big difference is that we don't stop caring once we've finished the building, or when we've sold the house, or even once you've moved in. We're there when you need us, until you're settled, satisfied and inviting your friends round.



5 stars for customer  
satisfaction

**Development  
Opening Times**

Thursday - Monday  
10.30am - 5.30pm

03300 297 502

[millerhomes.co.uk](http://millerhomes.co.uk)

**Sat Nav**

GL53 0HZ

Kingford





# Kingford

## Overview

Accessed from a superb entrance hall, both the study and the lounge feature bay windows and the island kitchen, incorporating bi-fold doors and rooflights, adjoins a dining room with french doors. The five bedrooms include two en-suites, and the family bathroom has a separate shower.

## Ground Floor

Lounge  
3.83m x 5.84m  
12'7" x 19'2"

Kitchen  
6.38m x 6.04m  
20'11" x 19'10"

Laundry  
2.25m x 1.72m  
7'5" x 5'8"

Dining  
3.73m x 3.49m  
12'3" x 11'6"

Study/Family  
3.34m x 3.46m  
11'0" x 11'5"

WC  
0.99m x 1.72m  
3'3" x 5'8"

## First

Principal Bedroom  
3.27m x 4.52m  
10'9" x 14'10"

En-Suite 1  
2.46m x 1.54m  
8'1" x 5'1"

Dressing  
2.46m x 2.55m  
8'1" x 8'4"

Bedroom 2  
3.86m x 2.58m  
12'8" x 8'6"

En-Suite 2  
2.53m x 1.43m  
8'4" x 4'9"

Bedroom 3  
3.84m x 3.07m  
12'7" x 10'1"

Bedroom 4  
3.81m x 2.48m  
12'6" x 8'2"

Bedroom 5  
3.07m x 2.29m  
10'1" x 7'7"

Bathroom  
2.53m x 2.01m  
8'4" x 6'7"

## Floor Space

2,088 sq ft

Plots may be a mirror image of the floor plans. Please see Development Sales Manager for details



## Ground Floor



## First Floor





GREENWAY  
CHASE

We've been building homes since 1934, that's three generations of experience. We've learned a lot about people and that's made a big difference to what we do and how we do it. We're enormously proud of the homes we build, combining traditional craftsmanship with new ideas like low carbon technologies. The big difference is that we don't stop caring once we've finished the building, or when we've sold the house, or even once you've moved in. We're there when you need us, until you're settled, satisfied and inviting your friends round.



5 stars for customer  
satisfaction

**Development  
Opening Times**

Thursday - Monday  
10.30am - 5.30pm

03300 297 502

[millerhomes.co.uk](http://millerhomes.co.uk)

**Sat Nav**

GL53 0HZ

**miller**homes