





YORK

3 BEDROOM DETACHED HOME

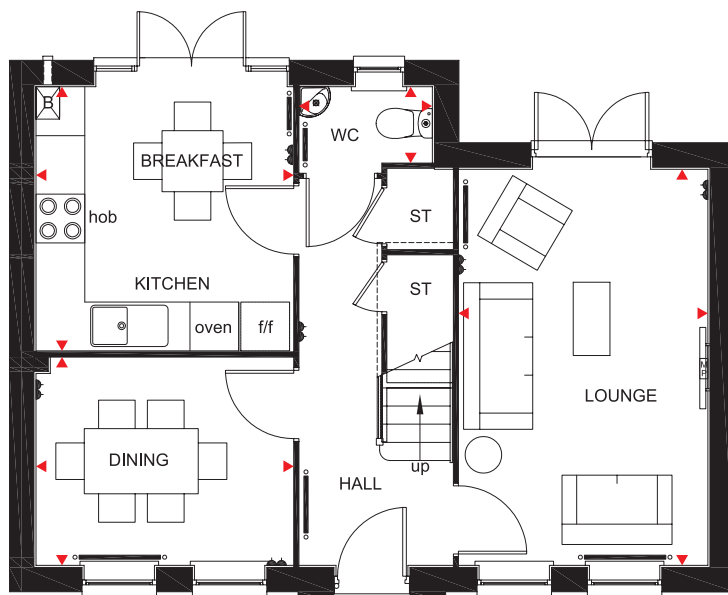
- A beautiful three bed home offering kitchen with breakfast area and French doors leading to the garden
- Ground floor also features a separate dining room and dual-aspect lounge with French doors leading to the garden
- The first floor has two double bedrooms with en suite to master
- bedroom, a single bedroom and family bathroom

Fen Street, Milton Keynes MK10 7ES

Please see working drawings for plot-specific details and elevation treatments

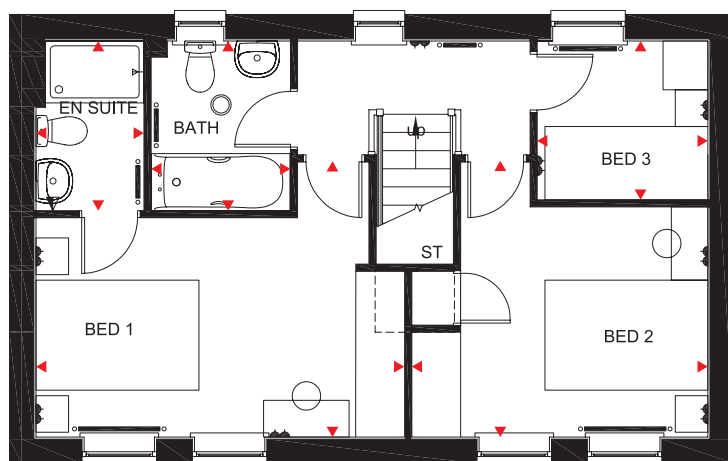


BARRATT
HOMES



Ground Floor

Lounge	4863 x 3050mm	15'11" x 10'0"
Kitchen/ Breakfast Area	3243 x 3153mm	10'8" x 10'4"
Dining Room	3153 x 2544mm	10'4" x 8'4"
WC	1627 x 1050mm	5'3" x 3'4"



First Floor

Bedroom 1	4526 x 3377mm	14'8" x 11'0"
En Suite	2083 x 1326mm	6'10" x 4'4"
Bedroom 2	3636 x 3377mm	11'9" x 11'0"
Bedroom 3	2096 x 1950mm	6'11" x 6'5"
Bathroom	2083 x 1710mm	6'10" x 5'7"

KEY

- Electric socket
- Media plate
- Shaver socket

- Radiator
- B Boiler
- ST Store

- f/f Fridge/freezer space
- Dimension location

barratthomes.co.uk

**CONSUMER
CODE FOR
HOME BUILDERS**
www.consumercode.co.uk

All images used are for illustrative purposes only. Floor plans are intended to give a general indication of the proposed floor layout only. The dimensions are accurate to within + or - 50mm but should not be used for carpet or flooring sizes, appliance spaces or items of furniture. Please ask our Sales Adviser for details of the treatments specified for individual plots. Individual features such as windows, brick and other materials' colours may vary, as may drainage, heating and electrical layouts. All images, photographs and dimensions are not intended to form part of any contract or warranty unless specifically incorporated in writing into the contract.



BRENTWOOD

3 BEDROOM SEMI-DETACHED HOME

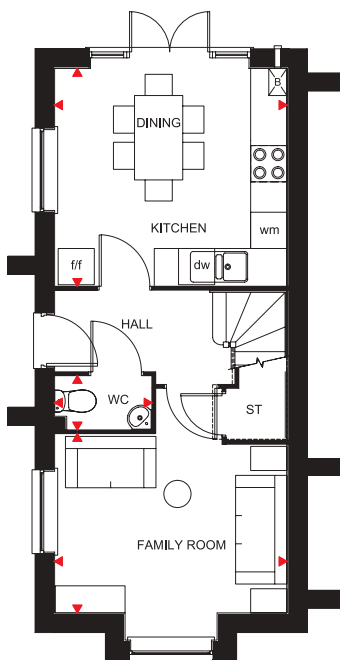
- A two and a half storey, three bedroom home offering open-plan kitchen with dining area and French doors opening onto the back garden
- A family room is also located on the ground floor
- First floor features a lounge, one double bedroom and a family bathroom
- Second floor features two further double bedrooms and a dual-access shower room

Fen Street, Brooklands, Milton Keynes MK10 7ES

Please see working drawings for plot-specific details and elevation treatments with regards to balconies



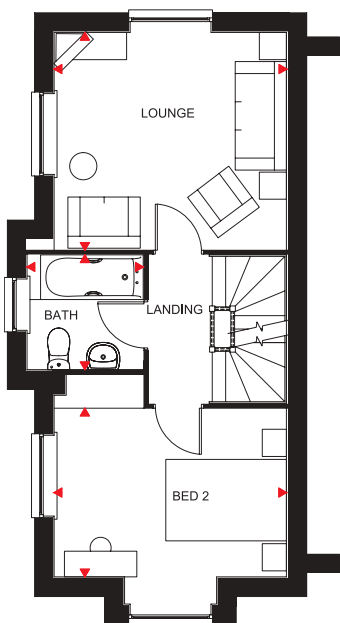
BARRATT
HOMES



Ground Floor

Kitchen/Dining	3850 x 3610mm	12'6" x 11'8"
Family Room	3850 x 2970mm	12'6" x 9'7"
WC	1610 x 900mm	5'2" x 2'9"

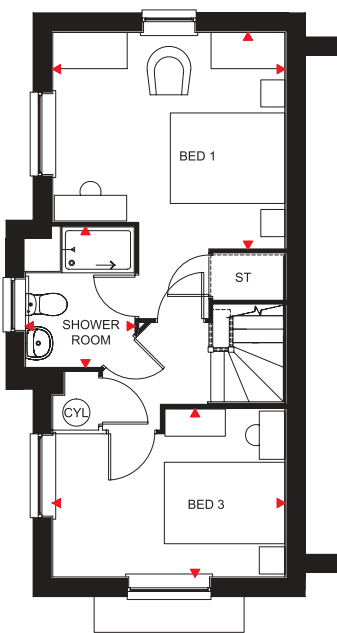
(Approximate dimensions)



First Floor

Lounge	3850 x 3610mm	12'6" x 11'8"
Bedroom 2	3850 x 2795mm	12'6" x 9'1"
Bath	1925 x 1900mm	6'3" x 6'2"

(Approximate dimensions)



Second Floor

Bedroom 1	3850 x 3585mm	12'6" x 11'7"
Bedroom 3	3850 x 2785mm	12'6" x 9'1"
Shower Room	1800 x 2325mm	5'9" x 7'6"

(Approximate dimensions)

KEY

B Boiler
ST Store
CYL Cylinder

wm Washing machine space
f/f Fridge/freezer space
dw Dishwasher space

◀▶ Dimension location

barratthomes.co.uk



ALNWICK

4 BEDROOM DETACHED HOME

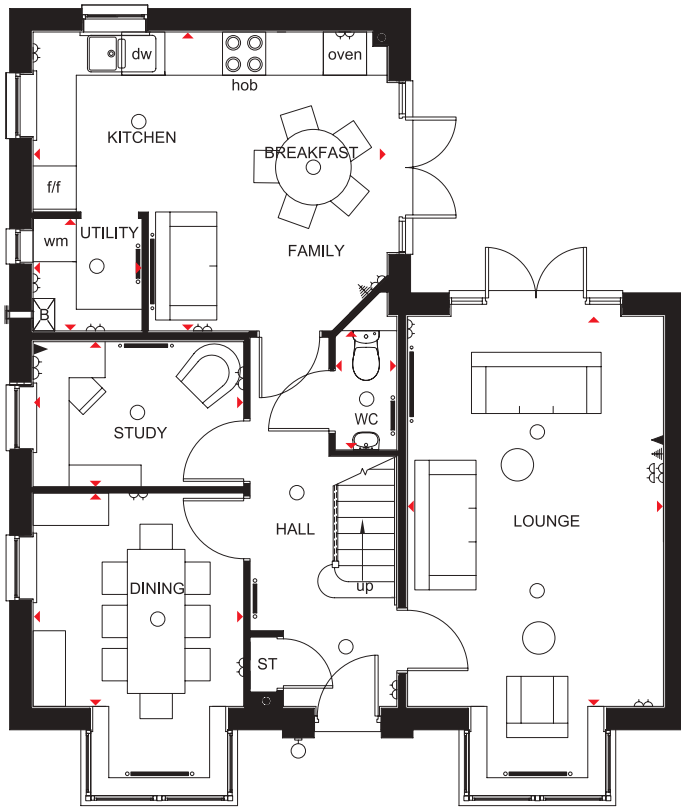
- A beautifully presented four bedroom detached home featuring kitchen with family area and French doors leading to the garden
- Separate study, dining room and spacious lounge with French doors opening onto the garden
- First floor features master bedroom with walk-in wardrobe and en suite, two further double bedrooms, a single bedroom and family bathroom

Fen Street, Brooklands, Milton Keynes MK10 7ES

Please see working drawings for plot-specific details and elevation treatments



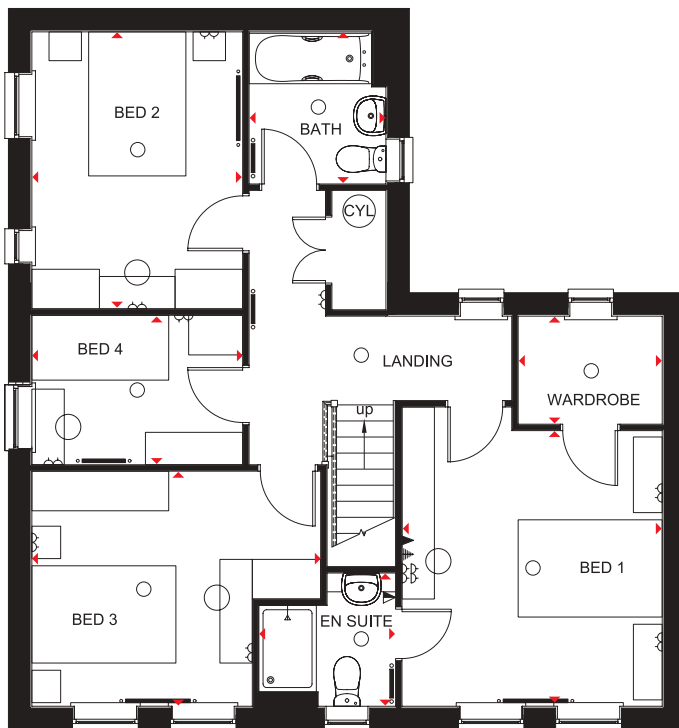
BARRATT
HOMES



Ground Floor

Lounge	5416 x 3552mm	17'9" x 11'8"
Dining Room	3990 x 2924mm	13'1" x 9'0"
Study	2924 x 2012mm	9'7" x 6'7"
Kitchen/Family/Breakfast	4916 x 4150mm	16'2" x 13'7"
Utility	1561 x 1512mm	5'11" x 5'0"
WC	1655 x 854mm	5'5" x 2'10"

[Approximate dimensions]



First Floor

Bedroom 1	3827 x 3613mm	12'7" x 11'10"
En Suite	1900 x 1850mm	6'3" x 6'1"
Wardrobe	2000 x 1500mm	6'7" x 4'11"
Bedroom 2	3822 x 2927mm	12'6" x 9'7"
Bedroom 3	4010 x 3264mm	13'2" x 10'9"
Bedroom 4	2927 x 2075mm	9'7" x 6'10"
Bathroom	2112 x 1900mm	6'11" x 6'3"

[Approximate dimensions]

KEY	○ Light fitting	▲ T.V. aerial socket	B Boiler	wm Washing machine space	◀▶ Dimension location
	⏏ Electric socket	▲ Shaver socket	ST Store	f/f Fridge/freezer space	
	◀ Telephone outlet point	— Radiator	CYL Cylinder	dw Dishwasher space	

barratthomes.co.uk



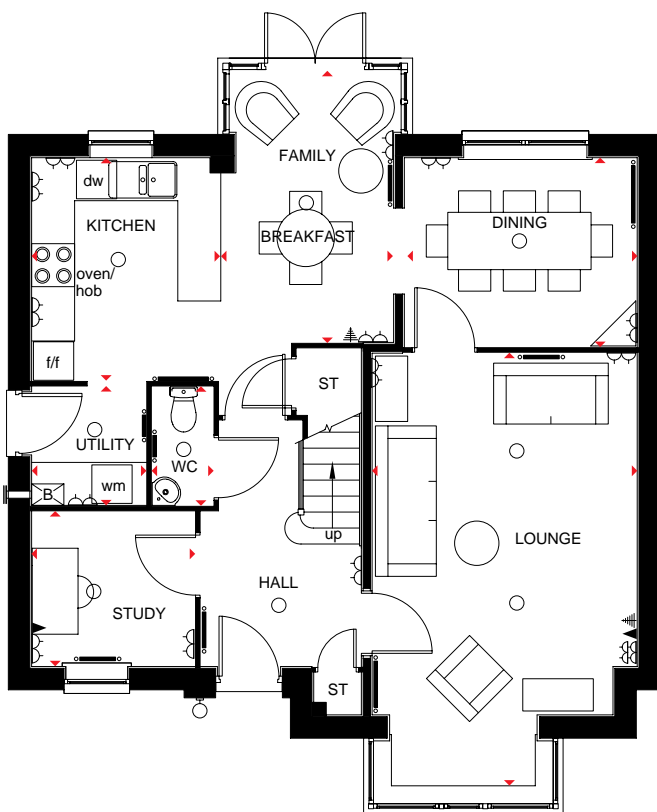
CAMBRIDGE

4 BEDROOM DETACHED HOME

- A beautifully presented four bedroom detached home featuring kitchen with family and breakfast areas and glazed bay leading to the garden
- Delightful lounge, study and dining room with French doors opening onto the garden
- First floor comprises master bedroom with en suite shower room, three further double bedrooms and family bathroom



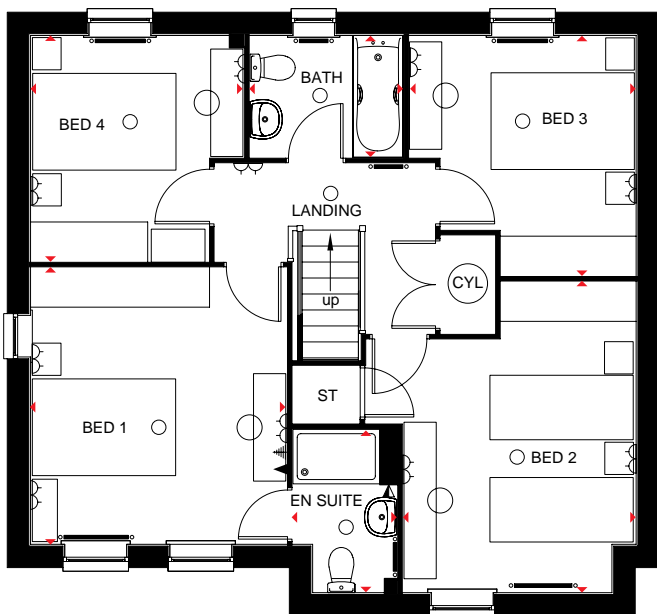
BARRATT
HOMES



Ground Floor

Kitchen Area	3111 x 2640mm	10'2" x 8'8"
Breakfast Area	3803 x 2412mm	12'6" x 7'11"
Utility	1656 x 1595mm	5'5" x 5'3"
WC	1656 x 850mm	5'5" x 2'9"
Lounge	6090 x 3700mm	19'11" x 12'2"
Dining Room	3250 x 2640mm	10'8" x 8'8"
Study	2276 x 2161mm	7'6" x 7'1"

[Approximate dimensions]



First Floor

Bedroom 1	3861 x 3574mm	12'8" x 11'9"
En Suite	2279 x 1450mm	7'6" x 4'9"
Bedroom 2	4338 x 3252mm	14'3" x 10'8"
Bedroom 3	3352 x 3164mm	11'0" x 10'5"
Bedroom 4	3154 x 2976mm	10'4" x 9'9"
Bathroom	2137 x 1700mm	7'0" x 5'7"

[Approximate dimensions]

KEY

○	Light fitting	▲	T.V. aerial socket	B	Boiler	wm	Washing machine space	◄►	Dimension location
⌋	Electric socket	▲	Shaver socket	ST	Store	f/f	Fridge/freezer space		
◄	Telephone outlet point	—	Radiator	CYL	Cylinder	dw	Dishwasher space		

barratthomes.co.uk



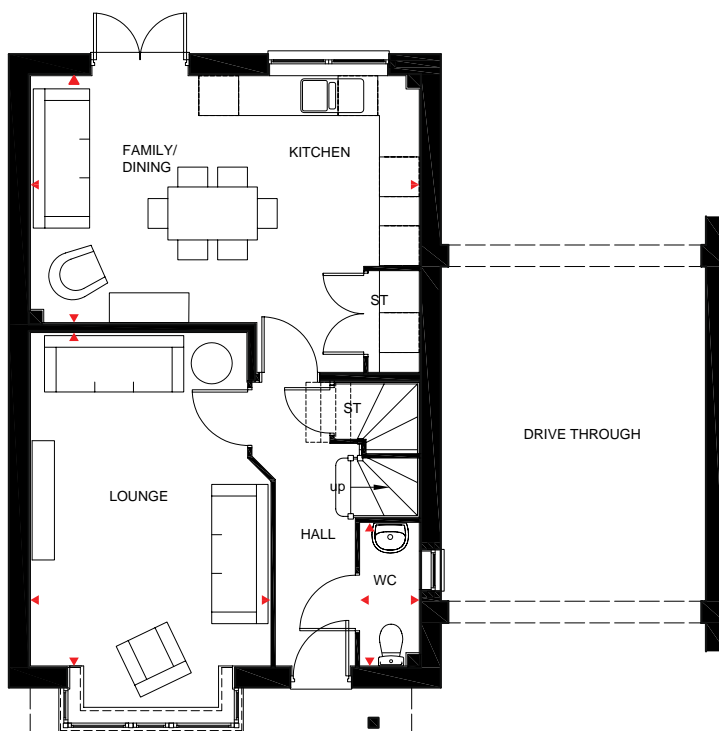
CHESHAM

4 BED HOME

- A delightful four bed home offering contemporary kitchen with dining and family areas and French doors leading to the rear garden
- Ground floor also boasts a full bay-fronted lounge
- The first floor features two double bedrooms, the master with en suite, two single bedrooms and modern family bathroom



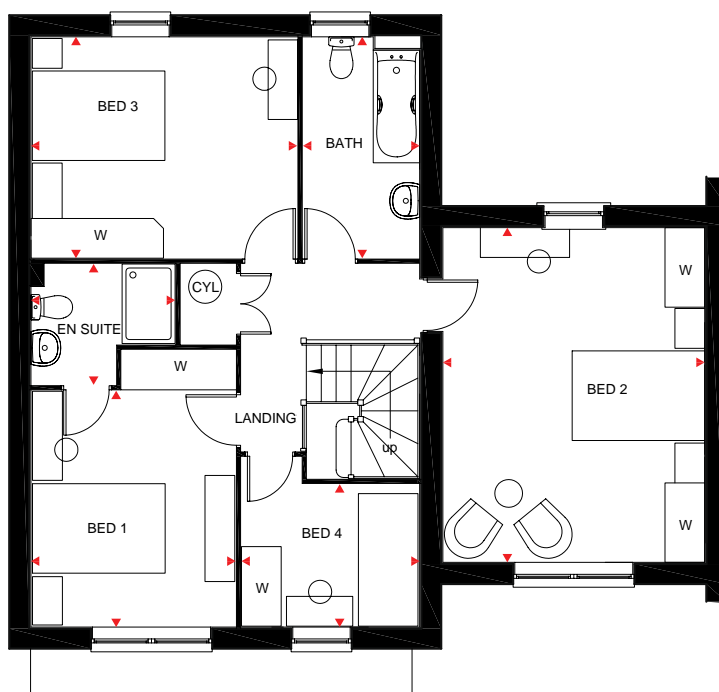
BARRATT
HOMES



Ground Floor

Lounge	3617 x 5028mm	11'10" x 16'5"
Kitchen / Dining Family Room	5865 x 3725mm	19'3" x 12'3"
WC	889 x 2153mm	2'11" x 7'1"

[Approximate dimensions]



First Floor

Bed 1	3088 x 3565mm	10'2" x 11'7"
En Suite	2175 x 1823mm	7'2" x 6'0"
Bed 2	3950 x 5050mm	12'10" x 16'7"
Bed 3	4017 x 3340mm	13'2" x 10'9"
Bed 4	2689 x 2153mm	8'10" x 7'1"
Bathroom	1760 x 3340mm	5'8" x 10'9"

[Approximate dimensions]

KEY	○ Light fitting	W Wardrobe
	ST Store	◄► Dimension location
	CYL Cylinder	

barratthomes.co.uk



FAVERSHAM

4 BEDROOM TERRACED/SEMI-DETACHED HOME

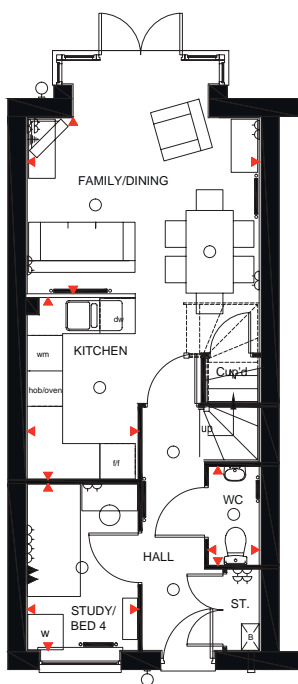
- A delightful four bed, three-storey home
- The ground floor features a free-flowing kitchen and a dining/family room with French doors opening onto the rear garden
- The first floor consists of a lounge and master bedroom with en suite
- The second floor features two further double bedrooms and family bathroom

Fen Street, Brooklands, Milton Keynes MK10 7ES

Please see working drawings for plot-specific details and elevation treatments



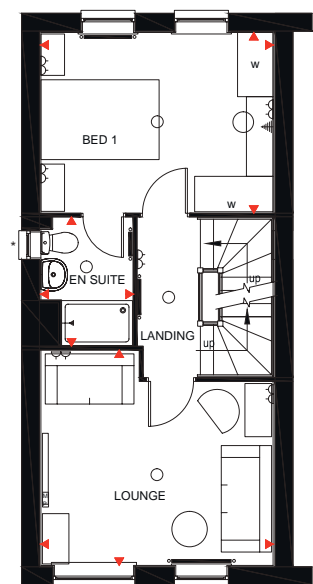
BARRATT
HOMES



Ground Floor

Study/Bed 4	1880 x 2825mm	6'2" x 9'3"
Kitchen	1880 x 3086mm	6'2" x 10'1"
Family/ Dining Room	3928 x 2979mm	12'10" x 9'9"
WC	863 x 1674mm	2'9" x 5'5"

(Approximate dimensions)

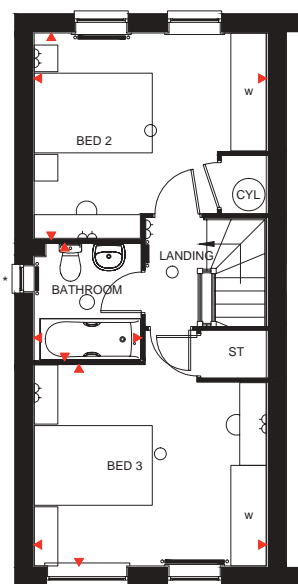


*This window is only applicable to certain plots.

First Floor

Lounge	3928 x 3645mm	12'10" x 11'11"
En suite	1563 x 2188mm	5'1" x 7'2"
Bed 1	3928 x 3057mm	12'10" x 10'0"

(Approximate dimensions)



*This window is only applicable to certain plots.

Second Floor

Bed 2	3928 x 3495mm	12'10" x 11'5"
Bathroom	1813 x 1987mm	5'11" x 6'6"
Bed 3	3928 x 3408mm	12'10" x 11'2"

(Approximate dimensions)

KEY	○ Light fitting	◀ T.V. aerial socket	B Boiler	wm Washing machine space	◀▶ Dimension location
	⏏ Electric socket	📺 Media plate	ST Store	f/f Fridge/freezer space	
	◀ Telephone outlet point	— Radiator	CYL Cylinder	dw Dishwasher space	

barratthomes.co.uk



HEXHAM

4 BEDROOM END TERRACE/SEMI-DETACHED HOME

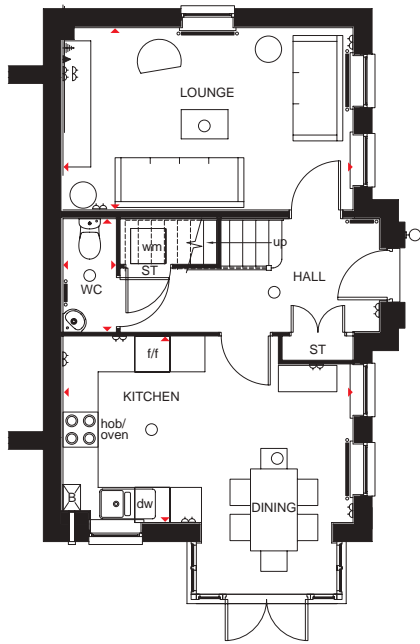
- A charming four bedroom home featuring free-flowing kitchen with dining area and full-height glazed bay leading to the garden
- Ground floor also provides a dual-aspect lounge
- The first floor has two double bedrooms with en suite to master bedroom, and family bathroom
- Second floor offers two further double bedrooms and dual-access shower room

Fen Street, Brooklands, Milton Keynes MK10 7ES

Please see working drawings for plot-specific details and elevation treatments



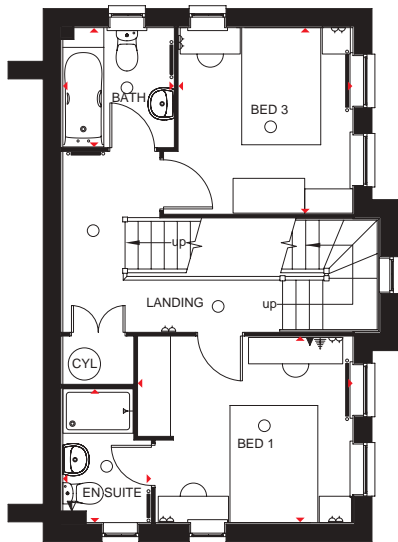
BARRATT
HOMES



Ground Floor

Lounge	4970 x 3088mm	16'3" x 10'1"
Kitchen/Dining	4970 x 3105mm	16'3" x 10'2"
WC	1928 x 910mm	6'3" x 2'10"

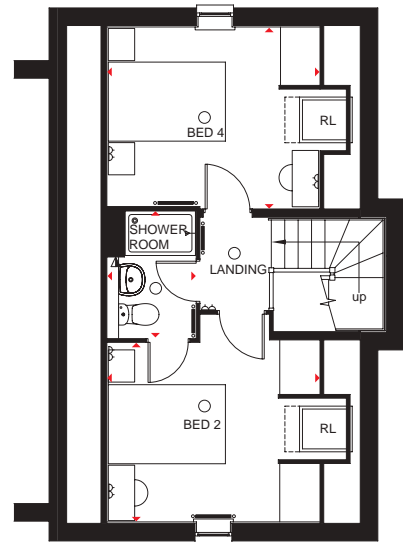
[Approximate dimensions]



First Floor

Bed 1	3677 x 3184mm	12'0" x 10'4"
En Suite	2296 x 1510mm	7'5" x 4'6"
Bed 3	3149 x 2984mm	10'3" x 9'8"
Bathroom	2048 x 1903mm	6'7" x 6'2"

[Approximate dimensions]



Second Floor

Bed 2	3615 x 3064mm	11'9" x 10'0"
Bed 4	3615 x 3071mm	11'9" x 10'1"
Shower Room	2180 x 1500mm	7'2" x 4'9"

[Approximate dimensions]

KEY

○	Light fitting	▲	T.V. aerial socket	B	Boiler	wm	Washing machine space	◀▶	Dimension location
⏏	Electric socket	▲	Shaver socket	ST	Store	f/f	Fridge/freezer space	RL	Roof light
◀	Telephone outlet point	—●—	Radiator	CYL	Cylinder	dw	Dishwasher space		

barratthomes.co.uk



HEXLEY

4 BEDROOM DETACHED/SEMI-DETACHED HOME

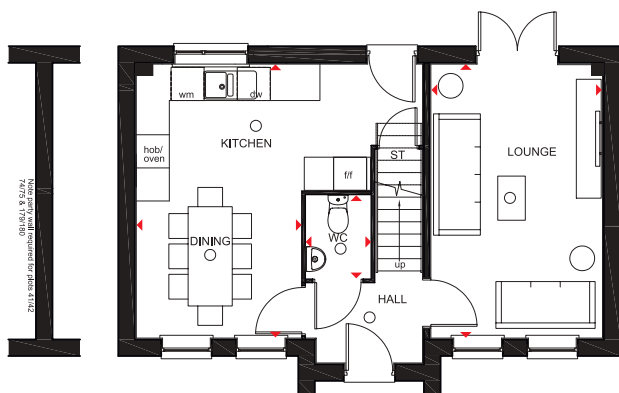
- A charming four bed home featuring open-plan kitchen and dining area
- The ground floor also provides a dual-aspect lounge with French doors leading to the garden
- The first floor has two double bedrooms with en suite to master bedroom, and family bathroom
- Second floor offers two further double bedrooms and dual-access shower room

Fen Street, Brooklands, Milton Keynes MK10 7ES

Please see working drawings for plot-specific details and elevation treatments



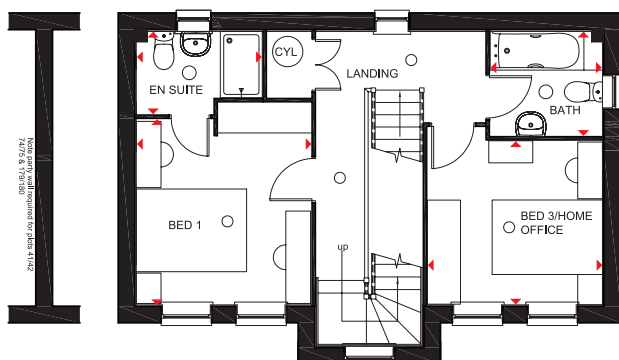
BARRATT
HOMES



Ground Floor

Lounge	3112 x 4965mm	10'2" x 16'2"
Kitchen/Dining	3002 x 4965mm	9'8" x 16'2"
WC	1196 x 1533mm	3'9" x 5'0"

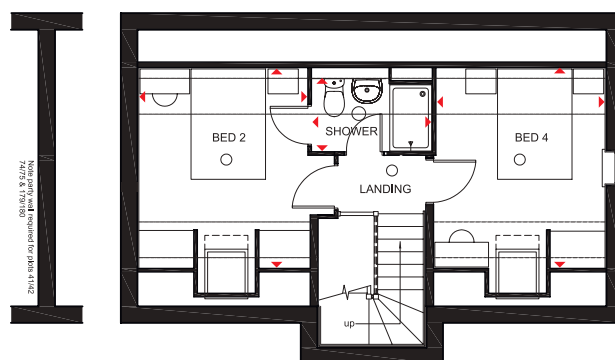
(Approximate dimensions)



First Floor

Bedroom 1	3187 x 3379mm	10'4" x 11'0"
En Suite	2299 x 1513mm	7'5" x 4'9"
Bedroom 3/ Home Office	3187 x 2987mm	10'4" x 9'7"
Bathroom	1905 x 2050mm	6'2" x 6'7"

(Approximate dimensions)



Second Floor

Bedroom 2	3067 x 3641mm	10'0" x 11'9"
Shower Room	2193 x 1326mm	7'1" x 4'3"
Bedroom 4	3067 x 3641mm	10'0" x 11'9"

(Approximate dimensions)

KEY

- Light fitting
- ST Store
- CYL Cylinder

- wm Washing machine space
- f/f Fridge/freezer space
- dw Dishwasher space

◀▶ Dimension location



HYTHE

4 BEDROOM SEMI-DETACHED HOME

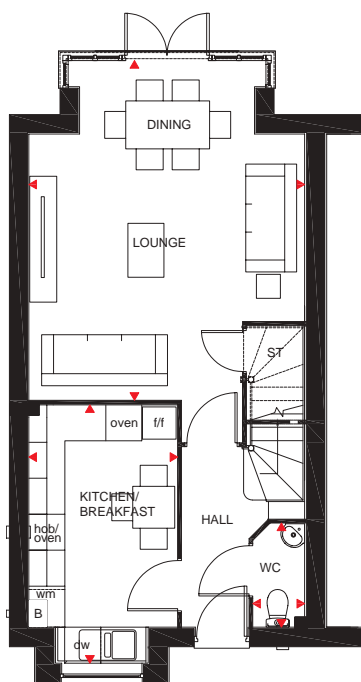
- A modern four bedroom, three-storey home offering open-plan lounge and dining room with a glazed bay opening onto the rear garden
- A contemporary kitchen with breakfast area and WC completes the ground floor
- Two double bedrooms and a dual-access en suite on the first floor
- Second floor has two further double bedrooms and family bathroom

Fen Street, Brooklands, Milton Keynes MK10 7ES

Please see working drawings for plot-specific details and elevation treatments



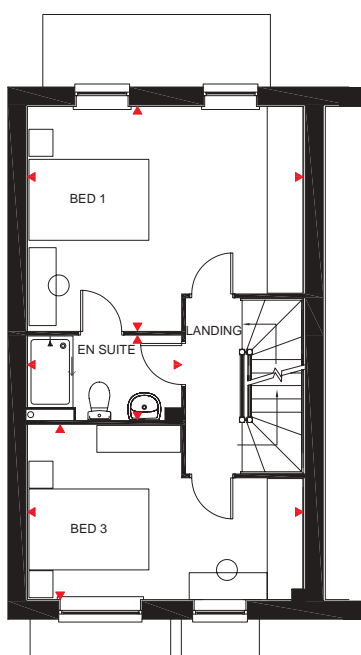
BARRATT
HOMES



Ground Floor

Lounge/Dining Room	5655 x 4610mm	18'7" x 15'1"
Kitchen/Breakfast	4446 x 2481mm	14'7" x 8'2"
WC	1726 x 861mm	5'8" x 2'10"

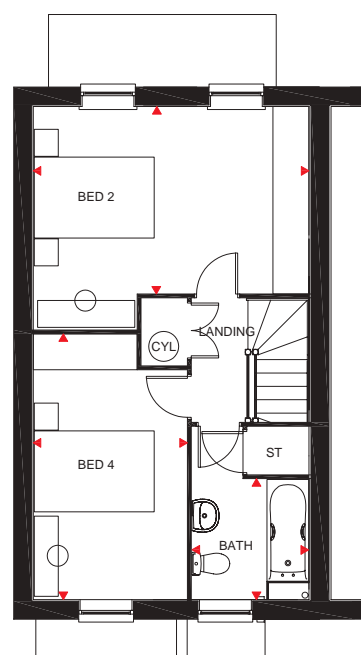
[Approximate dimensions]



First Floor

Bedroom 1	4610 x 3689mm	15'1" x 12'1"
En Suite	2562 x 1399mm	8'5" x 4'7"
Bedroom 3	4610 x 2963mm	15'1" x 9'9"

[Approximate dimensions]



Second Floor

Bedroom 2	4610 x 3117mm	15'1" x 10'3"
Bedroom 4	4424 x 2561mm	14'6" x 8'5"
Bathroom	2007 x 1962mm	6'7" x 6'5"

[Approximate dimensions]

KEY

B Boiler
ST Store
CYL Cylinder

wm Washing machine space
f/f Fridge/freezer space
dw Dishwasher space

◀ ▶ Dimension location

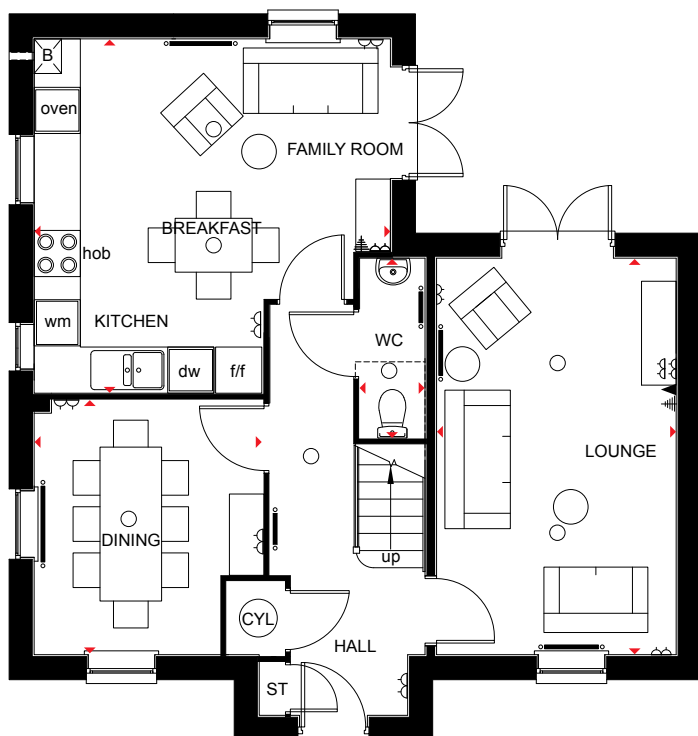


LINCOLN

4 BEDROOM DETACHED HOME

- A beautifully presented four bedroom home featuring open-plan kitchen with breakfast and family areas and French doors leading to the garden
- Separate dual-aspect dining room and lounge with French doors leading to the garden
- The first floor boasts master bedroom with en suite shower room, two further double bedrooms, a single bedroom and family bathroom



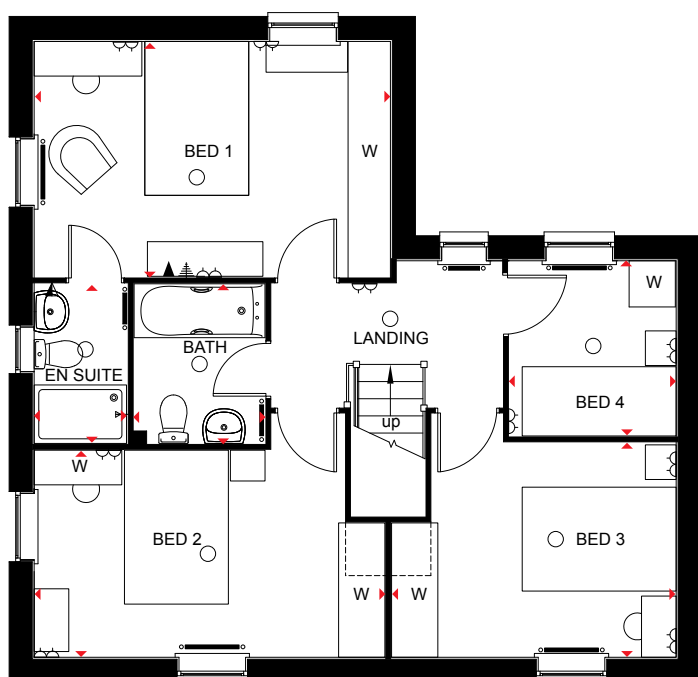


Ground Floor

Kitchen/Family/Breakfast	4628 x 4605mm	15'2" x 15'1"
Dining Room	3310 x 2974mm	10'10" x 9'9"
Lounge	5153 x 3113mm	16'11" x 10'3"
WC	2338 x 852mm	7'9" x 2'9"

[Approximate dimensions]

*Please see working drawings for planning required plot specific additional windows



First Floor

Bedroom 1	4628 x 3062mm	15'2" x 10'1"
En Suite	2075 x 1200mm	6'10" x 4'0"
Bedroom 2	4532 x 2691mm	14'11" x 8'10"
Bedroom 3	3715 x 2788mm	12'2" x 9'2"
Bedroom 4	2155 x 2277mm	7'1" x 7'6"
Bathroom	2075 x 1700mm	6'10" x 5'7"

[Approximate dimensions]

KEY	○ Light fitting	▲ T.V. aerial socket	B Boiler	wm Washing machine space	◀▶ Dimension location
	⏏ Electric socket	▲ Shaver socket	ST Store	f/f Fridge/freezer space	
	◀ Telephone outlet point	— Radiator	CYL Cylinder	dw Dishwasher space	

barratthomes.co.uk



WOODBIDGE

4 BEDROOM SEMI-DETACHED HOME

- A stylish two and a half storey, four bedroom home with open-plan lounge and dining room with glazed bay opening onto the rear garden
- Smart up-to-date kitchen equipped with quality appliances
- First floor boasts two double bedrooms, a single bedroom and family bathroom
- Master bedroom with en suite shower room and dressing area is neatly located on the top floor

Fen Street, Brooklands, Milton Keynes MK10 7ES

Please see working drawings for plot-specific details and elevation treatments



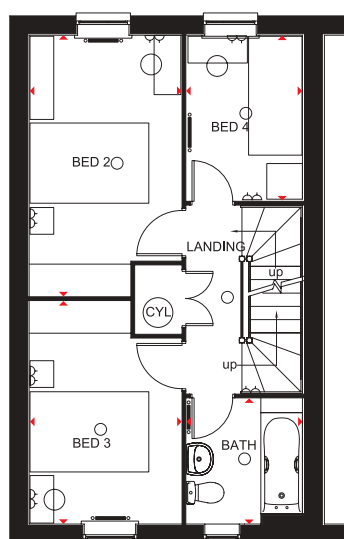
BARRATT
HOMES



Ground Floor

Lounge/ Dining Room	5655 x 4600mm	18'7" x 15'1"
Kitchen	4446 x 2481mm	14'7" x 8'2"
WC	1726 x 862mm	5'8" x 2'10"

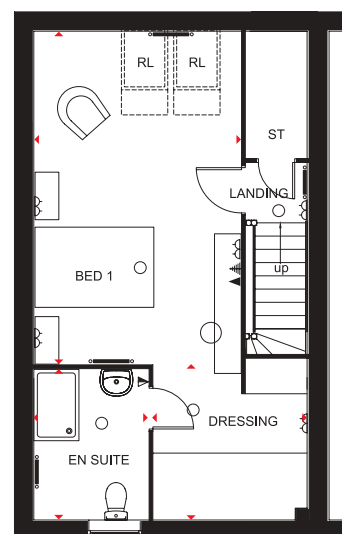
(Approximate dimensions)



First Floor

Bedroom 2	4391 x 2562mm	14'5" x 8'5"
Bedroom 3	3750 x 2562mm	12'4" x 8'5"
Bedroom 4	2784 x 1961mm	9'2" x 6'5"
Bathroom	2112 x 1961mm	6'11" x 6'5"

(Approximate dimensions)



Second Floor

Bedroom 1	5602 x 3484mm	18'5" x 11'5"
En Suite	2535 x 1929mm	8'4" x 6'4"
Dressing Area	2624 x 2594mm	8'7" x 8'6"

(Approximate dimensions)

KEY

- Light fitting
- ◻ Electric socket
- ◀ Telephone outlet point

- ◀ T.V. aerial socket
- ◀ Shaver socket
- Radiator

- B Boiler
- ST Store
- CYL Cylinder

- wm Washing machine space
- f/f Fridge/freezer space
- dw Dishwasher space

- ◀▶ Dimension location
- RL Roof light

barratthomes.co.uk



DEVELOPMENT LAYOUT PHASE 2A

	Alcester	2 bedroom apartments
	Foxton	2 bedroom apartments
	Madley	2 bedroom apartments
	Madley	2 bedroom apartments
	Brentwood	3 bedroom home
	Brentwood	3 bedroom home
	Finchley	3 bedroom home
	Morpeth	3 bedroom home
	Alnwick	4 bedroom home
	Cambridge	4 bedroom home
	Chesham	4 bedroom home
	Faversham	4 bedroom home
	Hexham	4 bedroom home
	Hexley	4 bedroom home
	Hexley	4 bedroom home
	Hythe	4 bedroom home
	Lincoln	4 bedroom home
	Rochester	4 bedroom home
	Rochester	4 bedroom home

	Taunton	4 bedroom home
	Taunton	4 bedroom home
	Woodbridge	4 bedroom home
	Affordable Reduced Cost Housing	
	Affordable Low Cost Housing	
	Affordable Housing Rented	
	Affordable Housing Shared Ownership	



barratthomes.co.uk
0844 811 3399



IMPORTANT INFORMATION: Images and site layout are intended for illustrative purposes only and should be treated as general guidance only. Site layout including parking arrangements, affordable housing, community buildings, play areas and public open spaces may change to reflect changes in the planning permission for the development. Please speak to your solicitor to whom full details of any revisions to planning consents including layout plans will be available. Individual features such as windows, brick, other materials and colours may vary from those shown. Please ask our sales adviser for details of the treatments specified for individual plots. Images, site layouts, landscaping and dimensions are not intended to form part of any contract or warranty unless specifically incorporated in writing into the contract. Brooklands, Milton Keynes is a marketing name only and may not be the designated postal address, which may be determined by The Post Office.



• MILTON KEYNES •

DEVELOPMENT LAYOUT PHASE 2A

- | | | |
|--|-------------------------------------|----------------------|
| | Brooklands | 2 bedroom apartments |
| | Madley | 2 bedroom apartments |
| | Brentwood | 3 bedroom home |
| | Finchley | 3 bedroom home |
| | Chesham Special | 4 bedroom home |
| | Faversham | 4 bedroom home |
| | Hexham | 4 bedroom home |
| | Hexley | 4 bedroom home |
| | Hythe | 4 bedroom home |
| | Lincoln | 4 bedroom home |
| | Rochester | 4 bedroom home |
| | Taunton | 4 bedroom home |
| | Woodbridge | 4 bedroom home |
| | Affordable Housing Rented | |
| | Affordable Housing Shared Ownership | |

