



The Berwyn



3 Bedroom Detached Home

A fabulous three bedroom detached home with open plan living/dining area to the rear opening onto the rear garden and separate sitting room to the front.

The first floor benefits from a master bedroom with ensuite facilities, two further bedrooms and a family bathroom.

Room Sizes

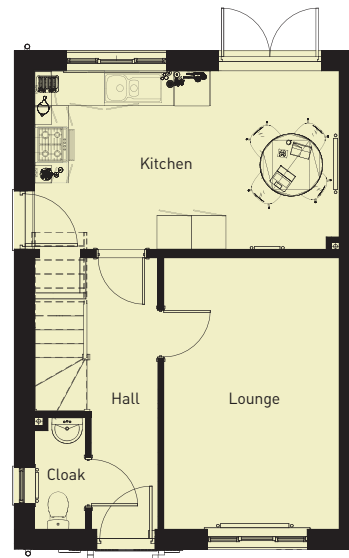
939 sqft

GROUND FLOOR

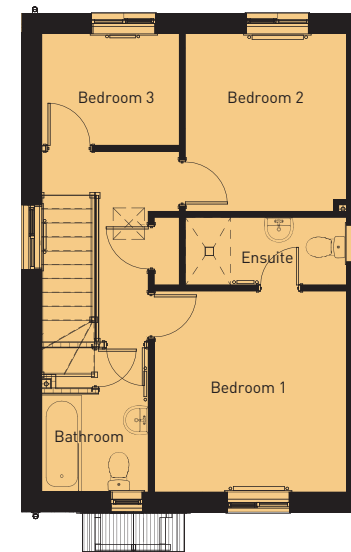
	<i>imperial</i>	<i>metric</i>
Hallway	15'10" x 3'9"	4.84m x 1.15m
Lounge	15'10" x 10'1"	4.84m x 3.09m
Cloakroom	6'4" x 3'1"	1.94m x 0.96m
Kitchen/Dining Area	17'6" x 10'7"	5.35m x 3.25m

FIRST FLOOR

	<i>imperial</i>	<i>metric</i>
Bedroom One	11'8" x 11'0"	3.57m x 3.36m
Ensuite	11'0" x 4'0"	3.36m x 1.23m
Bedroom Two	10'6" x 9'2"	3.21m x 2.81m
Bedroom Three	8'0" x 6'9"	2.46m x 2.06m
Family Bathroom	8'5" max x 6'3"	2.58m max x 1.91m



GROUND FLOOR



FIRST FLOOR