

POUNDBURY

DORCHESTER



CGI shows a typical street scene at Crown Street East

Plot 339

4 bedroom semi-detached home
2422 sq ft



Plot 339

4 bedroom
semi-detached home
2422 sq ft

- Large living room with fireplace
- Fully integrated kitchen / breakfast room
- Spacious dining room
- Large entrance hall and lobby area
- Utility room
- Master bedroom with dressing room
- Two bedrooms with en suites
- Separate study
- Family bathroom
- Enclosed rear garden
- Double garage

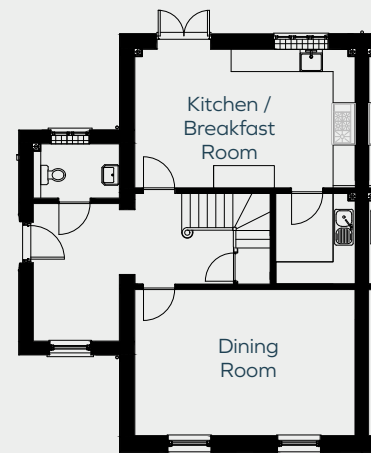


01202 623420
morrishomes.co.uk

POUNDBURY

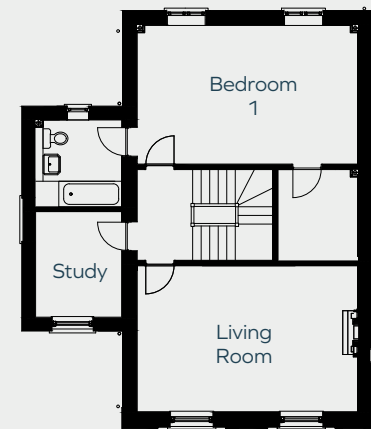
— DORCHESTER —

Ground Floor



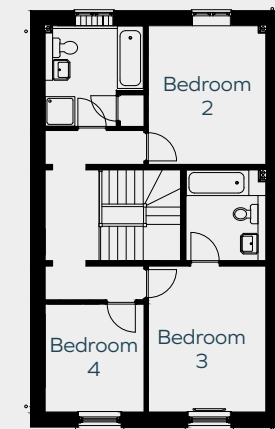
Kitchen / Breakfast Room 6.0m x 3.8m
Dining Room 6.0m x 4.0m

First Floor



Living Room 6.0m x 4.0m
Bedroom One 6.0m x 3.8m

Second Floor



Bedroom Two 4.0m x 3.2m
Bedroom Three 3.8m x 3.2m
Bedroom Four 2.9m x 2.7m

Plot floor plans are provided to indicate proposed floor layout for each home. Room measurements are accurate within + or - 50mm, however it is not recommended that these measurements are used for flooring installation, or such like, as plots can sometimes vary.

