

**RIALTON**  
AT  
**NANSLEDAN**  
NEWQUAY

**PLOT 32**

742 SQFT

A beautiful 2 bedroom, 2 story semi-detached home. This home enjoys an open plan kitchen / dining room, a separate lounge and WC to the ground floor. To the first floor are two bedrooms and family bathroom. Externally this home enjoys an enclosed garden and off road parking for two vehicles.



**PLOT 31**

**PLOT 32**



**MORRISH  
HOMES**

# PLOT 32

## GROUND FLOOR

### Living Room

4.7m x 3.1m (15'4" x 10'1")

### Kitchen/Breakfast Room

4.7m x 2.6m (15'4" x 8'5")

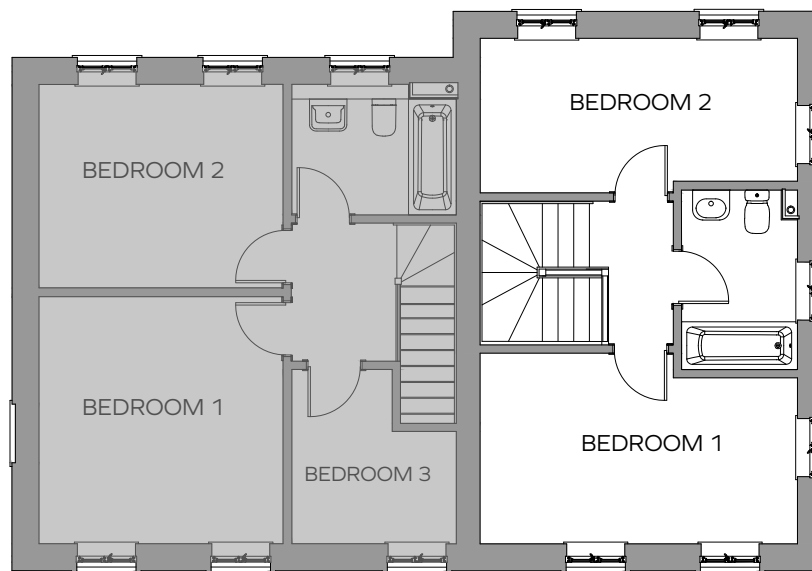
## FIRST FLOOR

### Bedroom 1

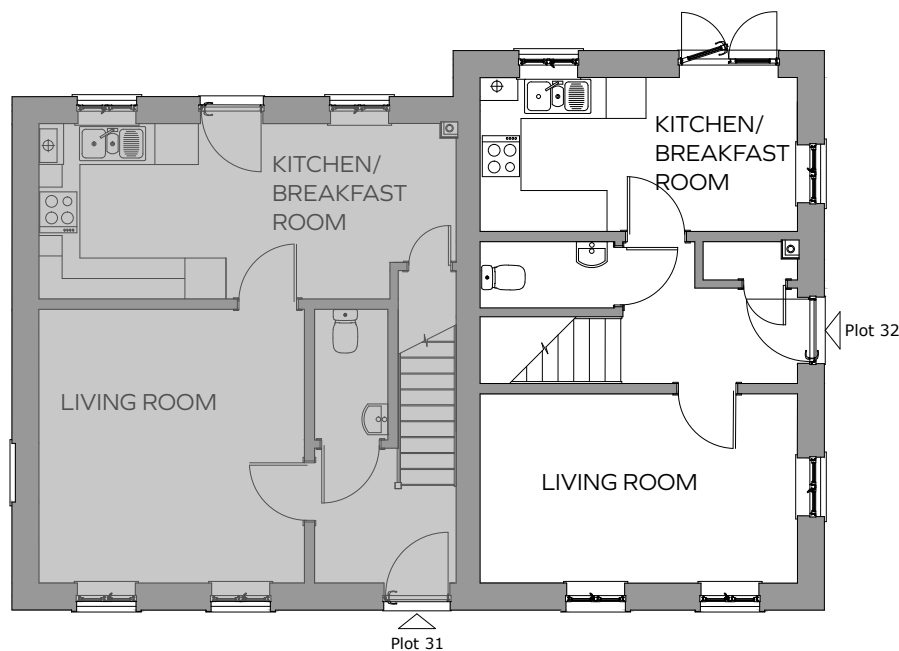
4.7m x 2.4m (15'4" x 7'8")

### Bedroom 2

4.7m x 2.1m (15'4" x 6'8")



FIRST FLOOR PLAN



GROUND FLOOR PLAN

**RIALTON**  
AT  
**NANSLEDAN**  
NEWQUAY



Raising Standards. Protecting Homeowners

**Bradleys**  
ESTATE AGENTS

01637 838171

<https://www.morrishomes.co.uk/development/rialton-new-build-development-newquay>

Computer generated image is not to scale. Finishes and materials may vary from those shown. Landscaping is illustrative only. Different styles of this house type may have a varied layout or dimensions. Please note floor plans and dimensions are taken from architectural drawings and are for guidance only. Kitchen layouts are for illustrative purposes only, please ask to see separate kitchen layouts.

**CONSUMER  
CODE** FOR  
HOME BUILDERS  
[www.consumercode.co.uk](http://www.consumercode.co.uk)

**M1**  
**MORRISH  
HOMES**