



WATERSIDE QUARTER  
MAIDENHEAD

## TRE ARCHI APARTMENTS



## APARTMENTS 102, 103<sup>(h)</sup>, 120, 121<sup>(h)</sup>, 137, 138<sup>(h)</sup> Two bedroom apartments

These contemporary apartments allow you to make the most of sophisticated waterside living, with all homes featuring a private balcony directly overlooking the rejuvenated waterways. Situated on either the first, second or third floor, each apartment benefits from a range of stunning interior features, including a sleek, open-plan dining/living area and semi-partitioned kitchen space, with high-specification integrated appliances. The dining/living area has room for a workstation and benefits from stylish French doors which open onto the balcony. Plots 102 and 103 have an additional terrace space accessed from bedroom one.

Bedrooms one and two are both spacious doubles, benefiting from fitted wardrobes and panoramic waterway views. Bedroom one enjoys the added luxury for an en-suite shower room. The family bathroom is located just across the hall. Your home has a range of additional features including plenty of storage space, private underground gated parking, and car charging points.

Total internal area: 67.05 sq. mts. 722 sq. ft.





# WATERSIDE QUARTER MAIDENHEAD

## TRE ARCHI APARTMENTS

### APARTMENTS 102, 103<sup>(h)</sup>, ► 120, 121<sup>(h)</sup>, 137, 138<sup>(h)</sup>

Two bedroom

**Kitchen/Dining/Living Area**  
8.70 m x 3.30 m 28'6" x 10'9"

**Bedroom 1**  
5.00 m x 2.90 m 16'4" x 9'6"

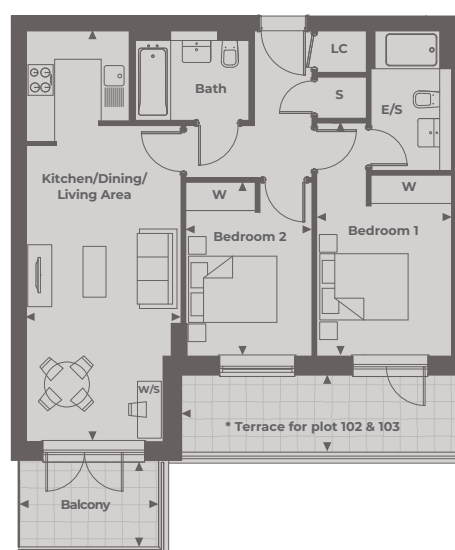
**Bedroom 2**  
3.70 m x 2.70 m 12'1" x 8'10"

**Balcony**  
2.93 m x 1.83 m 9'8" x 6'0"

**Terrace (Plot 102\*)**  
5.65 m x 1.35 m 18'6" x 4'5"

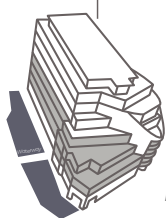
**Terrace (Plot 103\*)**  
6.00 m x 1.35 m 19'8" x 4'5"

**Total Internal Area**  
**67.05 sq. mts. 722 sq. ft.**



Waterway

Tre Archi Apartments



Floor Locator



First Floor



Second Floor



Third Floor

◀ Point from which maximum dimensions are measured. Dimensions are intended for guidance only and may vary by plus or minus 7.6cm/3". The plots indicate general layout only which may vary from other plots. Kitchen and bathroom layouts indicative only. W denotes Wardrobe. LC denotes Linen Cupboard. S denotes Storage. E/S denotes En-Suite. W/S denotes Workstation. (h) denotes Handed. Please contact sales consultant for more information.