

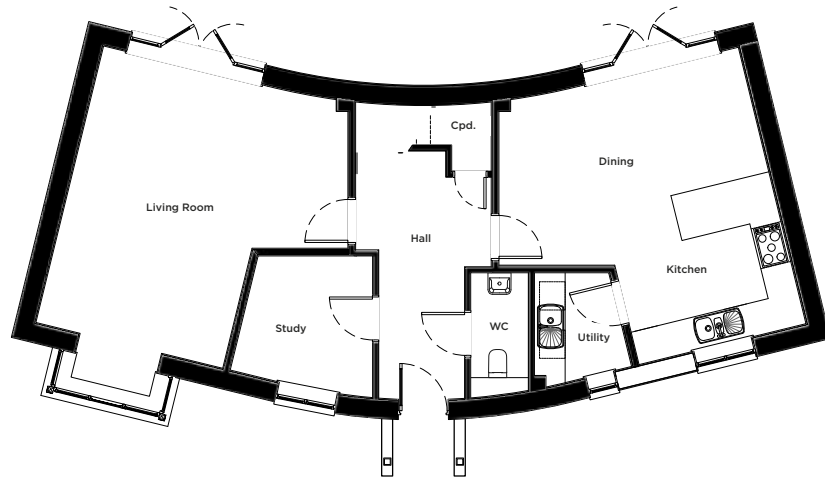


HOME 6

A four bedroom, detached home with double garage and two parking spaces

HOME 6

1749 sq ft | 162m²



GROUND FLOOR

Kitchen/Dining/Family

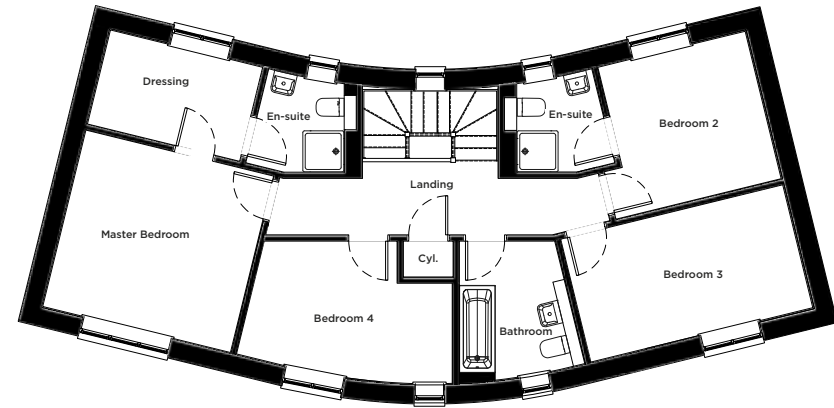
5.6m x 5.5m | 18' 3" x 17' 11"

Living Room

6.7m x 5.5m | 21' 11" x 18' 2"

Study

2.8m x 2.8m | 9' 3" x 9' 1"



FIRST FLOOR

Master Bedroom

3.8m x 3.5m | 12' 4" x 11' 7"

Bedroom 2

3.3m x 3.0m | 10' 11" x 9' 9"

Bedroom 3

4.5m x 2.5m | 14' 7" x 8' 1"

Bedroom 4

4.2m x 2.7m | 13' 11" x 8' 11"

01202 406127

morrishomes.co.uk

Floor plans are provided to indicate proposed floor layout for each home. Room measurements are accurate within + or - 50mm, however it is not recommended that these measurements are used for flooring installation, or such like. CGIs are not to scale. Finishes and materials may vary from those shown and landscaping is illustrative only.