



WATERSIDE QUARTER
MAIDENHEAD

TRE ARCHI APARTMENTS



APARTMENTS 110, 127, 142

One bedroom apartments

These one-bedroom apartments boast plenty of space so you can make the most of waterside living. Situated on either the first, second or third floor of Tre Archi, these homes enjoy a range of stunning interior features, including a sleek, open-plan kitchen/dining/living area. The kitchen has high-specification, energy-efficient, integrated appliances, while the generously sized living space is the perfect central hub for relaxing, entertaining or homeworking.

The spacious, bright, double bedroom enjoys a fitted wardrobe, with a contemporary bathroom next door. For your convenience, your new home has plenty of storage, including a useful linen cupboard, private underground gated parking, and car charging points.

Total internal area: 57.87 sq. mts. 622 sq. ft.



WATERSIDE QUARTER MAIDENHEAD

TRE ARCHI APARTMENTS

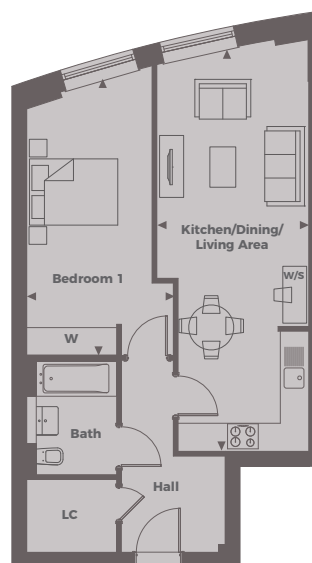
APARTMENTS 110, 127, 142 ►

One bedroom

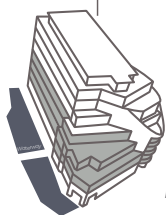
Kitchen/Dining/Living Area
8.50 m x 3.20 m 27'10" x 10'5"

Bedroom 1
5.80 m x 3.10 m 19'0" x 10'2"

Total Internal Area
57.87 sq. mts. 622 sq. ft.



Tre Archi Apartments



Floor Locator



First Floor



Second Floor



Third Floor

◀ Point from which maximum dimensions are measured. Dimensions are intended for guidance only and may vary by plus or minus 7.6cm/3". The plots indicate general layout only which may vary from other plots. Kitchen and bathroom layouts indicative only. W denotes Wardrobe. LC denotes Linen Cupboard. S denotes Storage. E/S denotes En-Suite. W/S denotes Workstation. (h) denotes Handed. Please contact sales consultant for more information.