



ASHCROFT PLACE

STAINES-UPON-THAMES

LANGLEY ROAD | STAINES-UPON-THAMES | SURREY | TW18 2EH



Computer generated image of Apartments

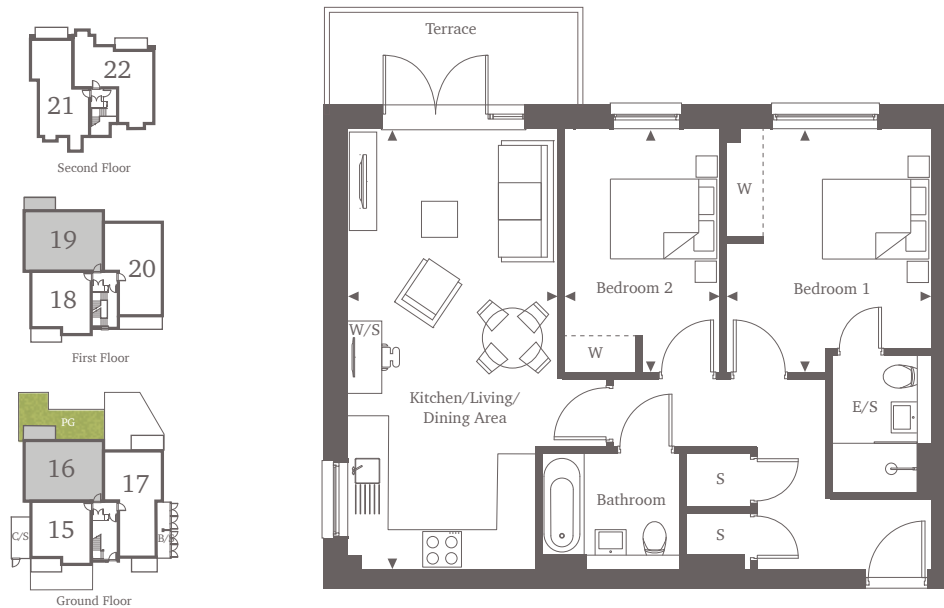


This site plan is a guide for illustrative purposes only. Landscaping shown is indicative only.

Apartments 16 & 19

Ground & First Floors

Indulge in the comfort of this 2-bedroom apartment, boasting two generous double bedrooms with fitted wardrobes. The master bedroom also features an en-suite bathroom for added convenience. Ample storage space awaits near the entrance, while further down the hallway, you'll find a generously sized main bathroom. The open plan kitchen and living area is equipped with integrated appliances and offers abundant space for relaxation. The living area opens out onto a north-facing terrace, providing an ideal spot to enjoy the outdoors.



Two Bedroom Home
70.42 sq m | 758 sq ft

| | | |
|----------------------------|---|---------------|
| Kitchen/Living/Dining Area | 7.25m [*] x 3.46m [*] | 23'8" x 11'4" |
| Bedroom 1 | 4.01m [*] x 3.37m [*] | 13'2" x 11'1" |
| Bedroom 2 | 4.01m x 2.57m | 13'2" x 8'5" |

For more information, please call 01784 913 033
shanlyhomes.com



◀ Point from which maximum dimensions are measured. C/S denotes cycle store. B/S denotes bin store. * Denotes (max) dimension. Dimensions are intended for guidance only and may vary by plus or minus 7.6cm/3". The plots indicate general layout only which may vary from other plots. Kitchen and bathroom layouts indicative only. S denotes storage. W denotes wardrobe. E/S denotes en-suite. W/S denotes work station. Please contact a sales consultant for more information. PG denotes private garden to plot.