

Oaklands Park

Oaklands Park Littleworth Road | Esher | Surrey | KT10 9PN

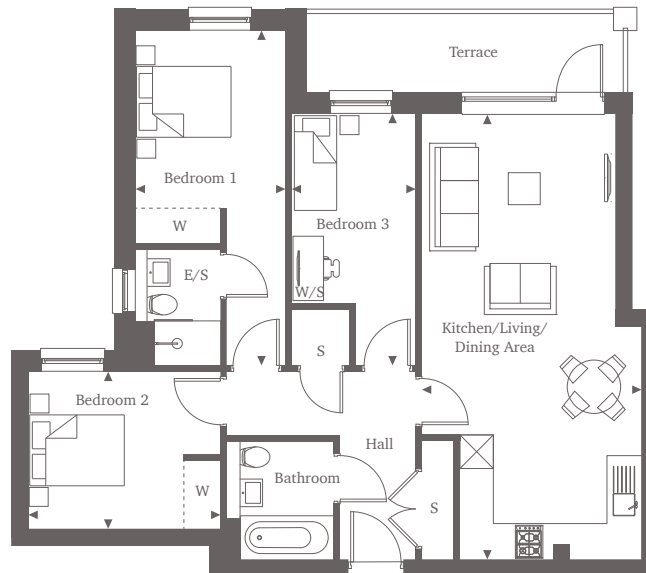
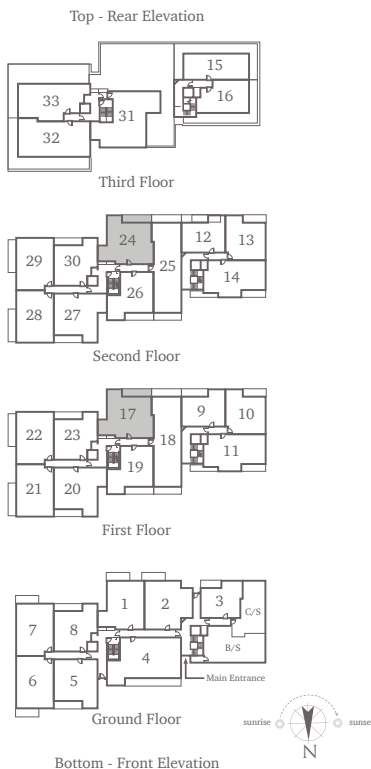


This site plan is a guide for illustrative purposes only. Landscaping shown is indicative only.

Apartments 17 & 24

First & Second Floors

Welcome to a three-bedroom apartment that epitomises contemporary elegance. The open plan kitchen and living area feature a U-shaped countertop, complemented by a large window and a doorway leading to the south facing terrace. Two of the three bedrooms are doubles, complete with built-in wardrobes, and the first bedroom includes a luxurious en-suite. The main bathroom is situated off the hallway, conveniently positioned across from generous storage space.



Three Bedroom Home 80.36 sq m | 865 sq ft

Kitchen/Living/Dining Area	8.01m x 3.93m*	26'3" x 12'11"*
Bedroom 1	6.10m x 2.73m*	20'0" x 9'0"*
Bedroom 2	3.47m x 2.86m	11'5" x 9'5"
Bedroom 3	4.55m x 2.25m*	14'11" x 7'5"*

For more information, please call 01372 679 383
shanlyhomes.com



◀ Point from which maximum dimensions are measured. * Denotes (max) dimension. Dimensions are intended for guidance only and may vary by plus or minus 7.6cm/3". The plots indicate general layout only which may vary from other plots. Kitchen and bathroom layouts indicative only. S denotes storage. W denotes wardrobe. E/S denotes en-suite. W/S denotes work station. B/S denotes bin store. C/S denotes cycle store. Please contact a sales consultant for more information.