

# ST MICHAEL'S GATE

Llantarnam Road, Llantarnam, CWMBRAN, NP44 3XB



A SUPERB COLLECTION OF 2, 3, AND 4 BEDROOM HOMES.



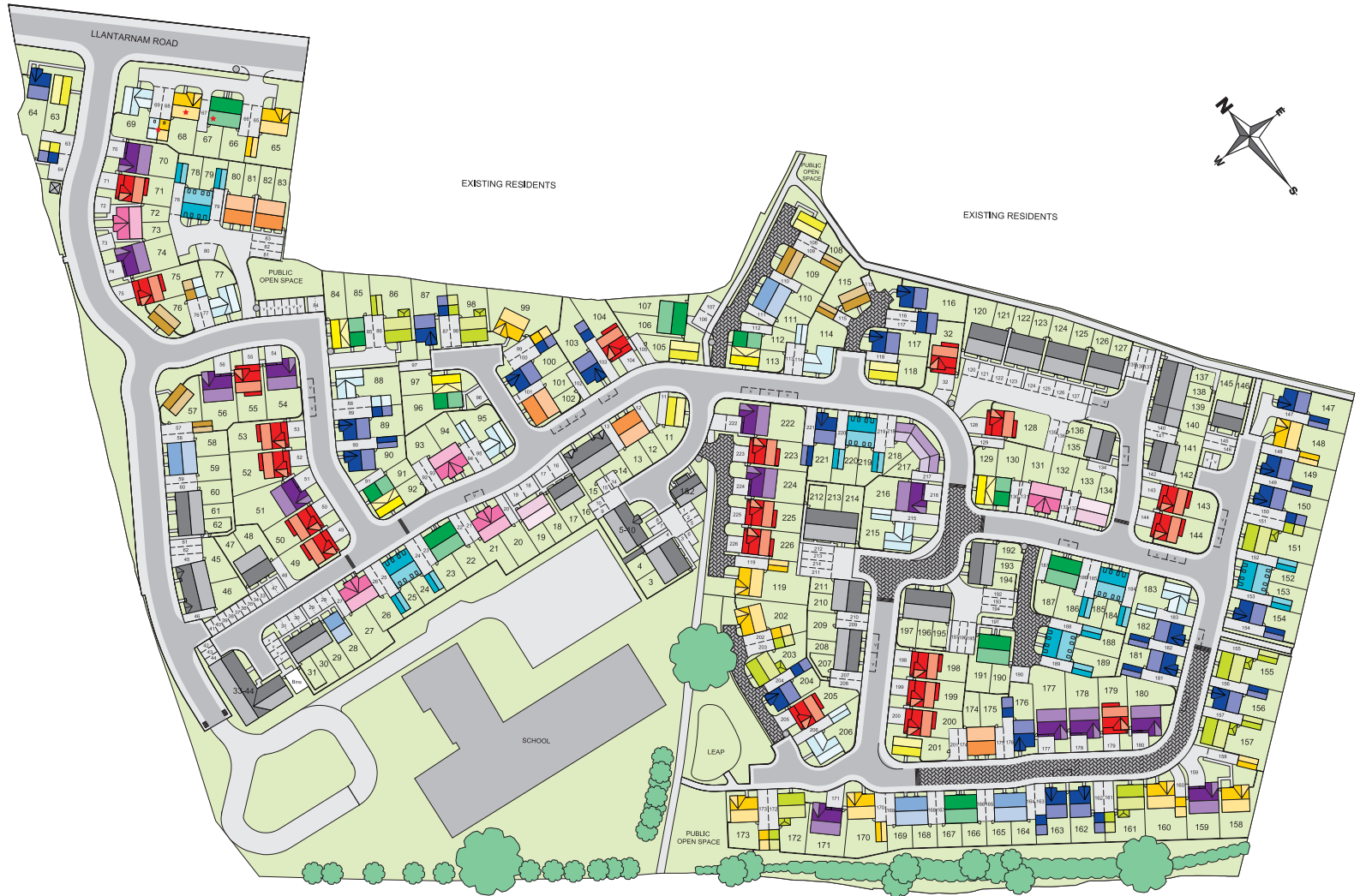
**BARRATT**  
HOMES

# ST MICHAEL'S GATE, CWMBRAN

## DEVELOPMENT LAYOUT

### Key

- ROSEBERRY 2 bedroom home
- RICHMOND 2 bedroom home
- PALMERSTON 3 bedroom home
- MAIDSTONE 3 bedroom home
- FOLKESTONE 3 bedroom home
- BUCHANAN 3 bedroom home
- ENNERDALE 3 bedroom home
- ANDOVER 3 bedroom home
- ESKDALE 3 bedroom home
- KINGSLEY 4 bedroom home
- NORBURY 3 bedroom home
- ALDERNEY 4 bedroom home
- TAMERTON 4 bedroom home
- RADLEIGH 4 bedroom home
- HALE 4 bedroom home
- AFFORDABLE HOMES
- ★
 SALES OFFICE & SHOW HOMES



[barratthomes.co.uk](http://barratthomes.co.uk)



Development layouts and landscaping are not intended to form part of any contract or warranty unless specifically incorporated in writing into the contract. Images and development layouts are for illustrative purposes and should be used for general guidance only. Development layouts including parking arrangements, social/affordable housing, commercial buildings/space, retail buildings/space, play areas and public open spaces may change to reflect changes in planning permission and are not intended to form part of any contract or warranty unless specifically incorporated in writing. Please speak to your solicitor to whom full details of any planning consents including layout plans will be available. St Michael's Gate is a marketing name only and may not be the designated postal address, which may be determined by The Post Office. SP343474



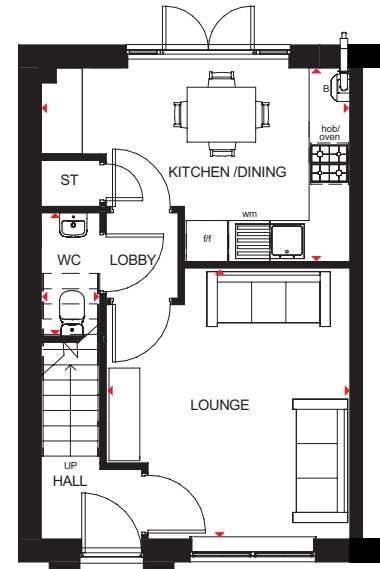
# ROSEBERRY

THE CLASSIC  
COLLECTION

## 2 BEDROOM HOME



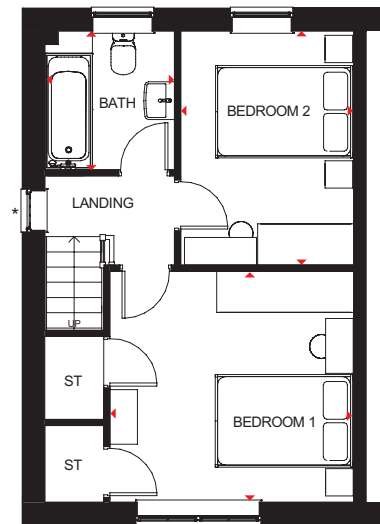
- Light fills this home through oversized windows, giving it a bright and airy feeling
- Downstairs has a fitted kitchen with dining area and French doors that lead onto the rear garden, a separate lounge, storage and a cloakroom
- Upstairs are two double-sized bedrooms and a bathroom. The larger bedroom has plenty of built-in storage space



### Ground Floor

Lounge	3557 x 3958mm	11'8" x 13'0"
Kitchen/Dining	4505 x 2828mm	14'9" x 9'3"
WC	860 x 1800mm	2'10" x 5'11"

(Approximate dimensions)



### First Floor

Bedroom 1	3557 x 3373mm	11'8" x 11'1"
Bedroom 2	2524 x 3413mm	8'3" x 11'2"
Bathroom	1893 x 2023mm	6'3" x 6'8"

(Approximate dimensions)

\* Window may be omitted on certain plots, Speak to a Sales Adviser for details on individual plots.

<b>KEY</b>	B	Boiler	f/f	Fridge/freezer space
	ST	Store	◀▶	Dimension location
	wm	Washing machine space		



**BARRATT**  
HOMES

All images used are for illustrative purposes. These and the dimensions given are illustrative for this house type and individual properties may differ. Please check with your Sales Adviser in respect of individual properties. We give maximum dimensions within each room which includes areas of fixtures and fittings including fitted furniture. These dimensions should not be used for carpet or flooring sizes, appliance spaces or items of furniture. All images, photographs and dimensions are not intended to be relied upon for, nor to form part of, any contract unless specifically incorporated in writing into the contract.

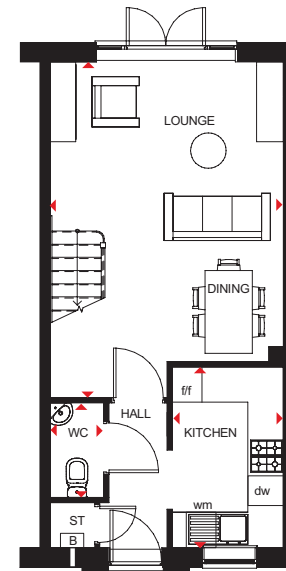
CONSUMER  
CODE FOR  
HOME BUILDERS  
[www.consumercode.co.uk](http://www.consumercode.co.uk)

344638

## 2 BEDROOM HOME



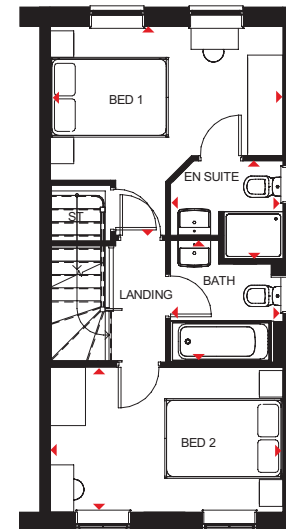
- Natural light floods through oversized windows in this two bedroom home
- A spacious open-plan lounge and dining area and a fully fitted kitchen create a great place for modern living
- On the first floor are two double bedrooms, the master with en suite, and a family bathroom



### Ground Floor

Lounge/Dining	5681 x 3943mm	18'8" x 12'11"
Kitchen	3063 x 1880mm	10'1" x 6'2"
WC	1600 x 904mm	5'3" x 3'0"

(Approximate dimensions)



### First Floor

Bedroom 1	3534 x 3943mm	11'7" x 12'11"
En Suite	1660 x 1901mm	5'5" x 6'3"
Bedroom 2	3943 x 2452mm	12'11" x 8'1"
Bathroom	2059 x 1901mm	6'9" x 6'3"

(Approximate dimensions)

\* Windows may be omitted on certain plots. Speak to a Sales Adviser for details on individual plots.

<b>KEY</b>	ST	Store	f/f	Fridge/freezer space
	B	Boiler	dw	Dishwasher space
	wm	Washing machine space	◀▶	Dimension location





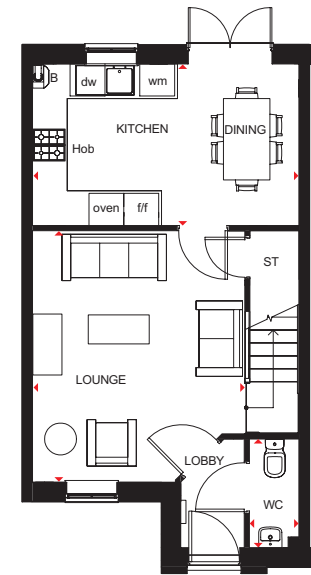
# PALMERSTON

THE CLASSIC  
COLLECTION

## 3 BEDROOM HOME



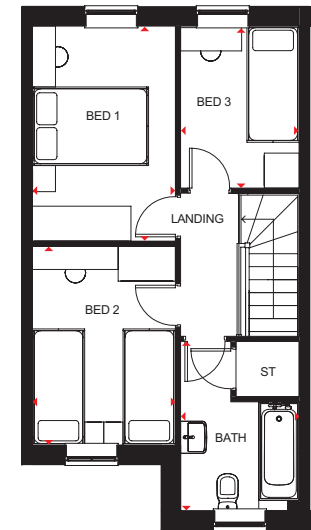
- Natural light streams through oversized windows in this attractive home
- A spacious open-plan kitchen and dining area, with French doors leading to the rear garden, creates the ideal hub for all the family
- A roomy front-aspect lounge is perfect for relaxing in
- Upstairs are two double bedrooms, a single bedroom and family bathroom



### Ground Floor

Lounge	3681 x 4335mm	12'1" x 14'3"
Kitchen/Dining	4590 x 2788mm	15'1" x 9'2"
WC	1875 x 856mm	6'2" x 2'10"

[Approximate dimensions]



### First Floor

Bedroom 1	3700 x 2462mm	12'2" x 8'1"
Bedroom 2	3422 x 2462mm	11'3" x 8'1"
Bedroom 3	2788 x 2041mm	9'2" x 6'8"
Bathroom	2913 x 2041mm	9'7" x 6'8"

[Approximate dimensions]

<b>KEY</b>	B	Boiler	ff	Fridge/freezer space
	ST	Store	dw	Dishwasher space
	wm	Washing machine space	◀▶	Dimension location



**BARRATT**  
HOMES

CONSUMER  
CODE FOR  
HOME BUILDERS  
[www.consumercode.co.uk](http://www.consumercode.co.uk)

All images used are for illustrative purposes. These and the dimensions given are illustrative for this house type and individual properties may differ. Please check with your Sales Adviser in respect of individual properties. We give maximum dimensions within each room which includes areas of fixtures and fittings including fitted furniture. These dimensions should not be used for carpet or flooring sizes, appliance spaces or items of furniture. All images, photographs and dimensions are not intended to be relied upon for, nor to form part of, any contract unless specifically incorporated in writing into the contract.

344636

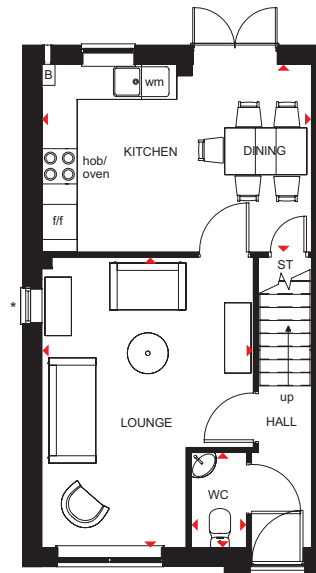
# MAIDSTONE

THE CLASSIC  
COLLECTION

## 3 BEDROOM HOME



- An ideal family home designed with plenty of space for modern living
- The ground floor has a spacious lounge and an open-plan kitchen with dining area and French doors leading to the garden
- On the first floor are two double bedrooms – the generous master with en suite – a single bedroom and family bathroom

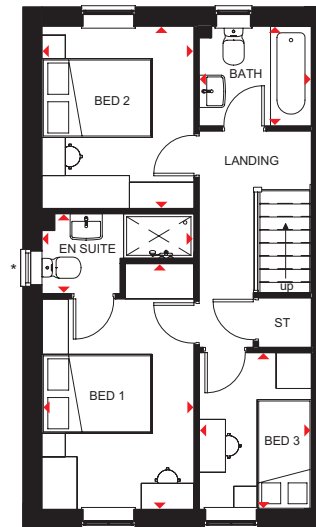


### Ground Floor

Lounge	4955 x 3604mm	16'3" x 11'10"
Kitchen/Dining	3202 x 4598mm	10'6" x 15'1"
WC	944 x 1620mm	3'1" x 5'4"

[Approximate dimensions]

\* Window may be omitted on certain plots, speak to a Sales Adviser for details on individual plots



### First Floor

Bedroom 1	4204 x 2592mm	13'10" x 8'6"
En Suite	1365 x 2592mm	4'6" x 8'6"
Bedroom 2	3112 x 2592mm	10'3" x 8'6"
Bedroom 3	2676 x 1918mm	8'9" x 6'4"
Bathroom	1702 x 1918mm	5'7" x 6'4"

[Approximate dimensions]

\* Window may be omitted on certain plots, speak to a Sales Adviser for details on individual plots

**KEY** B Boiler  
ST Store  
wm Washing machine space

f/f Fridge/freezer space  
◀▶ Dimension location



**BARRATT**  
HOMES

All images used are for illustrative purposes. These and the dimensions given are illustrative for this house type and individual properties may differ. Please check with your Sales Adviser in respect of individual properties. We give maximum dimensions within each room which includes areas of fixtures and fittings including fitted furniture. These dimensions should not be used for carpet or flooring sizes, appliance spaces or items of furniture. All images, photographs and dimensions are not intended to be relied upon for, nor to form part of, any contract unless specifically incorporated in writing into the contract.

CONSUMER  
CODE FOR  
HOME BUILDERS  
www.consumercode.co.uk

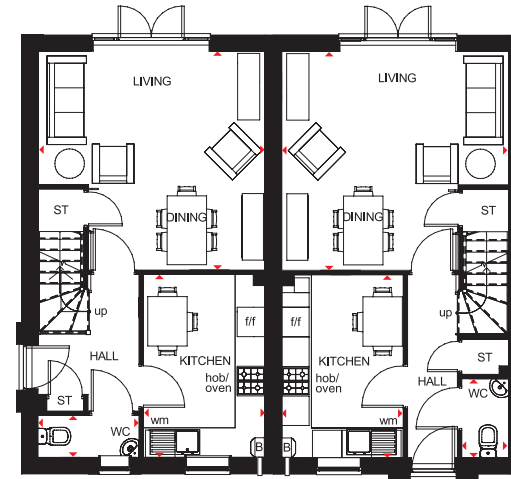
344644



## 3 BEDROOM HOME



- Bright three bedroom home with flexible space designed for practical modern living
- Open-plan lounge and dining area opens onto the rear garden, while a fully fitted kitchen includes room for a breakfast area
- Upstairs are a good-sized master bedroom with en suite, a further double bedroom, single bedroom and family bathroom



### Ground Floor (Door to side)

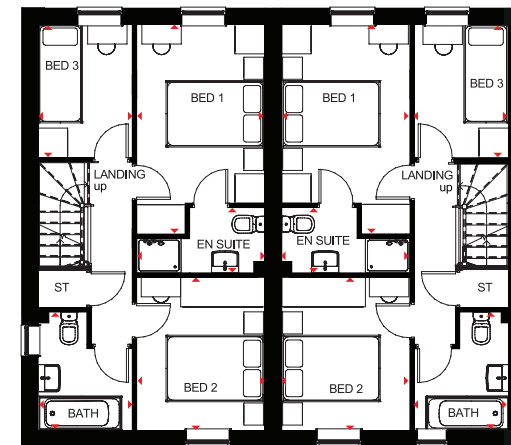
Living/Dining	4598 x 4445mm	15'1" x 14'7"
Kitchen	3713 x 2463mm	12'2" x 8'1"
WC	851 x 2047mm	2'10" x 6'9"

(Approximate dimensions)

### Ground Floor End/Mid-terraced (Door to front)

Living/Dining	4598 x 4445mm	15'1" x 14'7"
Kitchen	3713 x 2463mm	12'2" x 8'1"
WC	1600 x 948mm	5'3" x 3'1"

(Approximate dimensions)



### First Floor

Bedroom 1	4205 x 2597mm	13'10" x 8'6"
En Suite	1325 x 2597mm	4'4" x 8'6"
Bedroom 2	3112 x 2597mm	10'3" x 8'6"
Bedroom 3	2708 x 1913mm	8'11" x 6'3"
Bathroom	2406 x 1913mm	7'11" x 6'3"

(Approximate dimensions)

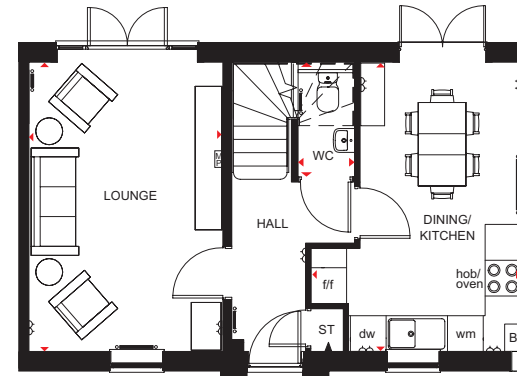
**KEY** B Boiler  
ST Store  
wm Washing machine space

f/f Fridge/freezer space  
◀▶ Dimension location

## 3 BEDROOM HOME



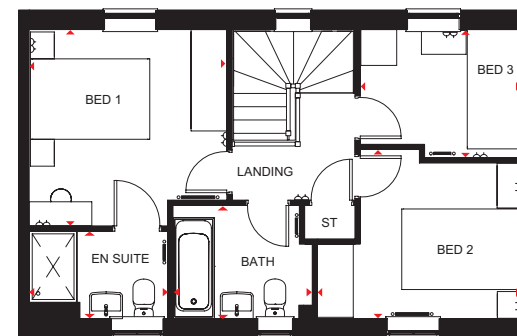
- A three bedroom home offering open-plan kitchen and dining area with French doors opening onto the rear garden
- Well-proportioned lounge with French doors leading to the garden
- First floor features two double bedrooms with en suite to master bedroom, single bedroom and family bathroom



### Ground Floor

Lounge	4848 x 3253mm	15'11" x 10'8"
Kitchen/Dining	4848 x 3521mm	15'11" x 11'7"
WC	1746 x 950mm	5'9" x 3'1"

(Approximate dimensions)



### First Floor

Bedroom 1	3312 x 3292mm	10'10" x 10'10"
En Suite	2322 x 1468mm	7'7" x 4'10"
Bedroom 2	3413 x 2836mm	11'2" x 9'4"
Bedroom 3	2696 x 2150mm	8'10" x 7'1"
Bathroom	2335 x 1900mm	7'8" x 6'3"

(Approximate dimensions)

<b>KEY</b>	Electric socket	Radiator	Washing machine space	Dimension location
	Telephone outlet point	Boiler	Fridge/freezer space	
	Media plate	Store	Dishwasher space	

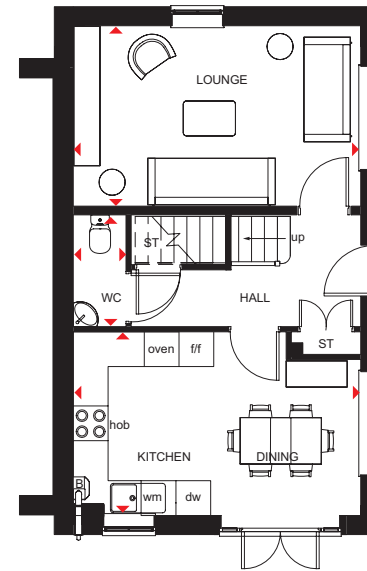




## 3 BEDROOM HOME



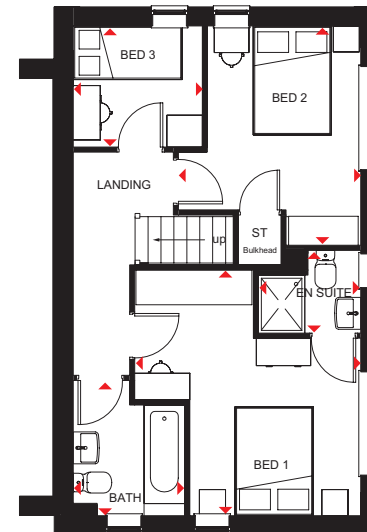
- Light floods into this attractive three bedroom home through oversized windows
- A dual-aspect lounge and bright, fully fitted kitchen with dining area opening onto the garden provide space that's ideal for modern living
- Upstairs are two spacious, dual-aspect double bedrooms, the master with en suite, a single bedroom and family bathroom



### Ground Floor

Lounge	4960 x 3112mm	16'3" x 10'3"
Kitchen/Dining	4960 x 3170mm	16'3" x 10'5"
WC	1929 x 911mm	6'4" x 3'0"

(Approximate dimensions)



### First Floor

Bedroom 1	4231 x 3898mm	13'11" x 12'9"
En Suite	2111 x 1427mm	6'11" x 4'8"
Bedroom 2	3783 x 3145mm	12'5" x 10'4"
Bedroom 3	2227 x 2089mm	7'4" x 6'10"
Bathroom	2334 x 1924mm	7'8" x 6'4"

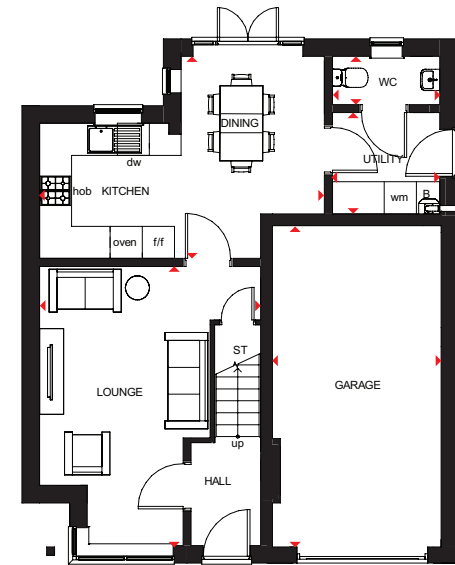
(Approximate dimensions)

<b>KEY</b>	ST Store	f/f Fridge/freezer space
	B Boiler	dw Dishwasher space
	wm Washing machine space	◀▶ Dimension location

## 3 BEDROOM DETACHED HOME



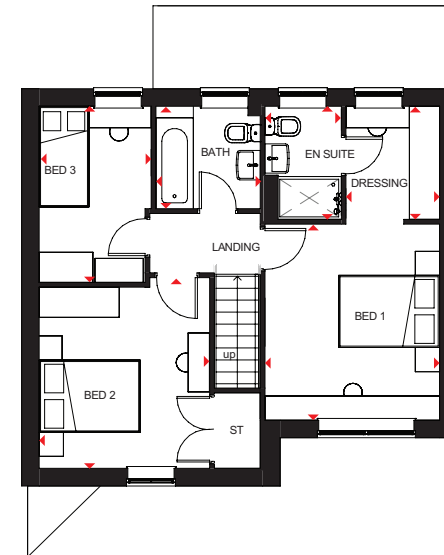
- Good-sized family home designed for modern living
- Flexible, open-plan kitchen/dining area leads to the rear garden and a separate utility room, while a spacious lounge has plenty of room to relax in
- An integral garage provides added security
- Two double bedrooms, the master with en suite and dressing area, a single bedroom and a family bathroom are on the first floor



### Ground Floor

Lounge	5212 x 4127mm	17'1" x 13'6"
Kitchen/Dining	5320 x 3773mm	17'5" x 12'5"
Utility	2002 x 1890mm	6'7" x 6'2"
WC	2002 x 900mm	6'7" x 2'11"
Garage	6000 x 3150mm	19'8" x 10'4"

(Approximate dimensions)



### First Floor

Bedroom 1	3660 x 3257mm	12'0" x 10'8"
En Suite	2113 x 1424mm	6'11" x 4'8"
Dressing Area	2113 x 1745mm	6'11" x 5'9"
Bedroom 2	3562 x 3183mm	11'8" x 10'5"
Bedroom 3	3289 x 2089mm	10'9" x 6'10"
Bathroom	1951 x 1913mm	6'5" x 6'3"

(Approximate dimensions)

<b>KEY</b>	B	Boiler	f/f	Fridge/freezer space
	ST	Store	dw	Dishwasher space
	wm	Washing machine space	◀▶	Dimension location

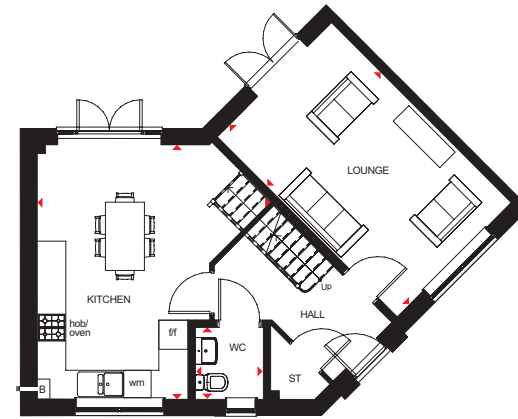




## 3 BEDROOM HOME



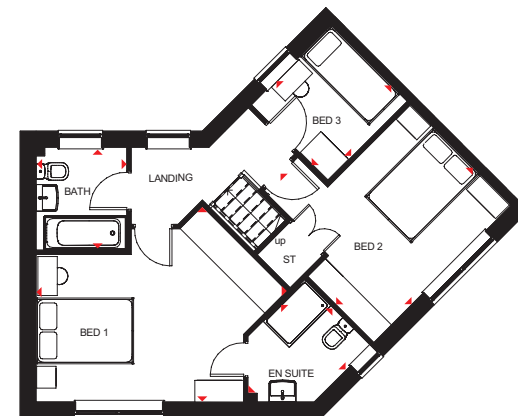
- Natural light floods into this home via oversized windows and two sets of French doors leading to the rear garden
- A large open-plan kitchen and dining area creates a great hub for the family, while the dual-aspect lounge provides room to entertain
- Upstairs are two spacious double bedrooms, the master with en suite, a single bedroom and family bathroom



### Ground Floor

Lounge	5230 x 3319mm	17'2" x 10'11"
Kitchen/Dining	5230 x 4822mm	17'2" x 15'10"
WC	1418 x 1480mm	4'8" x 4'10"

(Approximate dimensions)



### First Floor

Bedroom 1	5151 x 4019mm	16'11" x 13'2"
En Suite	2478 x 1920mm	8'2" x 6'4"
Bedroom 2	3952 x 3797mm	13'0" x 12'5"
Bedroom 3	2310 x 2213mm	7'7" x 7'3"
Bathroom	1863 x 2113mm	6'1" x 6'11"

(Approximate dimensions)

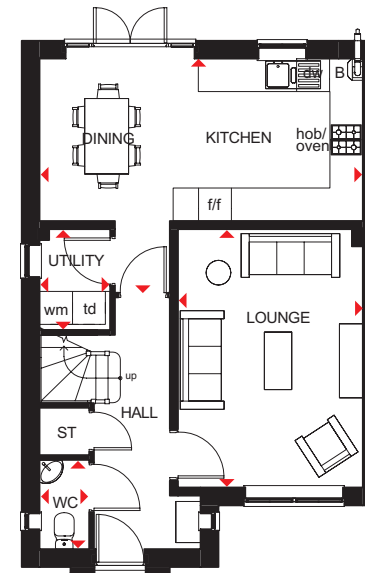
<b>KEY</b>	B	Boiler	f/f	Fridge/freezer space
	ST	Store	◀▶	Dimension location
	wm	Washing machine space		



## 4 BEDROOM DETACHED HOME



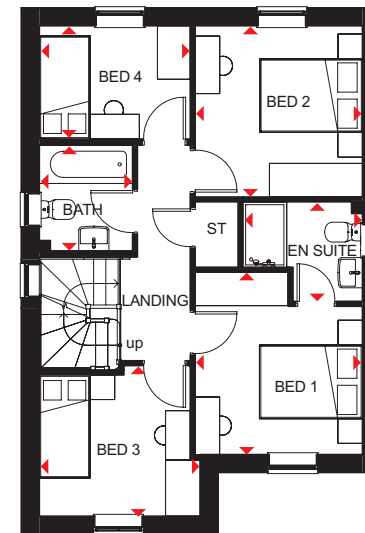
- Bright, airy family home with oversized windows to maximise light
- The large open-plan kitchen has a dining area with French doors leading to the garden; there is also a separate utility room
- The spacious lounge is a great place for the family to relax in
- Upstairs are two double bedrooms, the master with en suite, two single bedrooms and a family bathroom



### Ground Floor

Lounge	3370 x 4710mm	11'1" x 15'5"
Kitchen/Dining	5895 x 4268mm	19'4" x 14'0"
WC	904 x 1627mm	3'0" x 5'4"
Utility	1287 x 1841mm	4'3" x 6'0"

(Approximate dimensions)



### First Floor

Bedroom 1	3054 x 3328mm	10'0" x 10'11"
En Suite	2181 x 1816mm	7'2" x 5'11"
Bedroom 2	3054 x 3123mm	10'0" x 10'3"
Bedroom 3	2935 x 2747mm	9'8" x 9'0"
Bedroom 4	2754 x 2065mm	9'0" x 6'9"
Bathroom	1700 x 1937mm	5'7" x 6'4"

(Approximate dimensions)

<b>KEY</b>	B	Boiler	f/f	Fridge/freezer space	◀▶	Dimension location
	ST	Store	dw	Dishwasher space		
	wm	Washing machine space	td	Tumble dryer space		





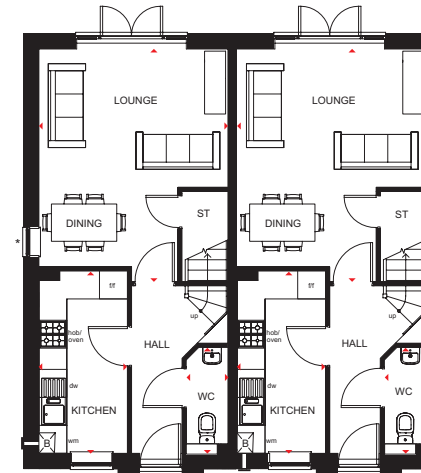
# NORBURY

THE CLASSIC  
COLLECTION

## 3 BEDROOM HOME



- Spacious 2½ storey three bedroom home featuring open-plan lounge and dining room with French doors opening onto the rear garden
- Stylish kitchen comes with quality units and appliances in a range of finishes
- First floor has two double bedrooms and dual-access family bathroom
- The impressive master bedroom is located on the second floor and features dressing area and en suite shower room

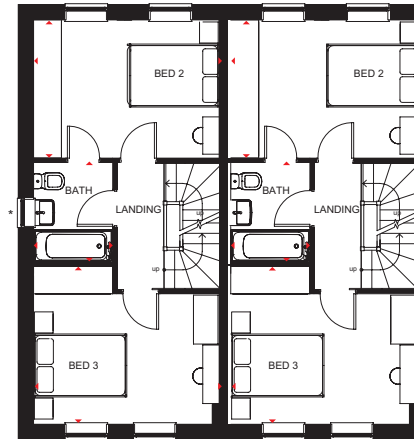


### Ground Floor

Lounge/Dining	4056 x 4991mm	13'4" x 16'4"
Kitchen	3910 x 1900mm	12'10" x 6'3"
WC	897 x 2272mm	2'11" x 7'5"

(Approximate dimensions)

\* Window may be omitted on certain plots. Speak to a Sales Adviser for details on individual plots.

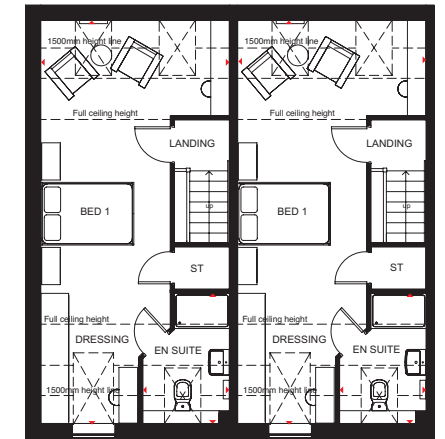


### First Floor

Bedroom 2	2965 x 4056mm	9'9" x 13'4"
Bedroom 3	3386 x 4056mm	11'1" x 13'4"
Bathroom	2146 x 1698mm	7'0" x 5'7"

(Approximate dimensions)

\* Window may be omitted on certain plots. Speak to a Sales Adviser for details on individual plots.



### Second Floor

Bedroom 1/ Dressing Area	4056 x 8673mm	13'4" x 28'5"
En Suite	1858 x 2799mm	6'1" x 9'2"

(Approximate dimensions)

<b>KEY</b>	B Boiler	f/f Fridge/freezer space
	ST Store	dw Dishwasher space
	wm Washing machine space	◀▶ Dimension location



**BARRATT**  
HOMES

All images used are for illustrative purposes. These and the dimensions given are illustrative for this house type and individual properties may differ. Please check with your Sales Adviser in respect of individual properties. We give maximum dimensions within each room which includes areas of fixtures and fittings including fitted furniture. These dimensions should not be used for carpet or flooring sizes, appliance spaces or items of furniture. All images, photographs and dimensions are not intended to be relied upon for, nor to form part of, any contract unless specifically incorporated in writing into the contract.

CONSUMER  
CODE FOR  
HOME BUILDERS  
www.consumercode.co.uk

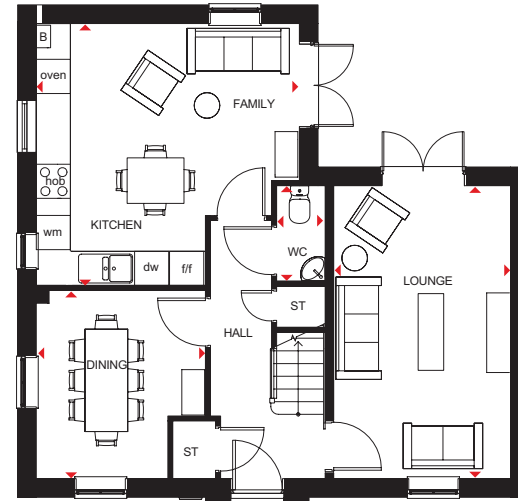
# ALDERNEY

THE CLASSIC  
COLLECTION

## 4 BEDROOM DETACHED HOME



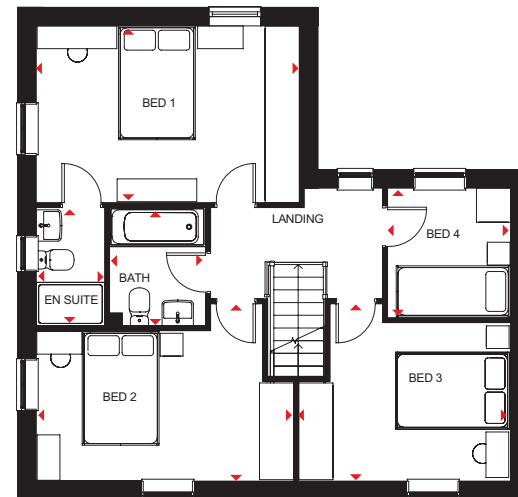
- A large fitted kitchen with family and breakfast areas provides this spacious home with the ideal hub for all the family
- French doors leading to the rear garden from both the kitchen and the separate lounge give it a bright and airy feeling, and there is a separate dining room with dual-aspect windows
- Upstairs are three double bedrooms, the master bedroom with en suite, a single bedroom and a family bathroom



### Ground Floor

Lounge	5148 x 3110mm	16'11" x 10'2"
Kitchen/ Family Room	4623 x 4603mm	15'2" x 15'1"
Dining Room	3307 x 2972mm	10'10" x 9'9"
WC	1675 x 853mm	5'6" x 2'10"

[Approximate dimensions]



### First Floor

Bedroom 1	4623 x 3104mm	15'2" x 10'2"
En Suite	2075 x 1191mm	6'10" x 3'11"
Bedroom 2	4523 x 3115mm	14'10" x 10'3"
Bedroom 3	3724 x 3115mm	12'3" x 10'3"
Bedroom 4	2275 x 2163mm	7'6" x 7'1"
Bathroom	2075 x 1697mm	6'10" x 5'7"

[Approximate dimensions]

<b>KEY</b>	B	Boiler	fff	Fridge/freezer space
	ST	Store	dw	Dishwasher space
	wm	Washing machine space	◀▶	Dimension location



**BARRATT**  
HOMES

All images used are for illustrative purposes only. Floor plans are intended to give a general indication of the proposed floor layout only. The dimensions are accurate to within + or - 50mm but should not be used for carpet or flooring sizes, appliance spaces or items of furniture. Please ask our Sales Adviser for details of the treatments specified for individual plots. Individual features such as windows, brick and other materials' colours may vary, as may drainage, heating and electrical layouts. All images, photographs and dimensions are not intended to form part of any contract or warranty unless specifically incorporated in writing into the contract.

BALD 00CD DS00/SP320540



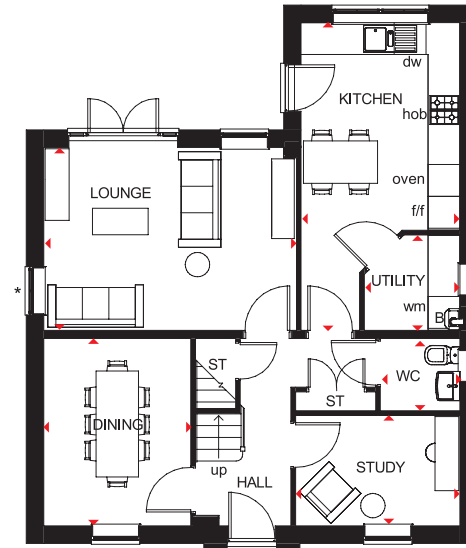
# TAMERTON

THE CLASSIC  
COLLECTION

## 4 BEDROOM DETACHED HOME



- A spacious home designed to be light and airy with oversized windows
- The generous lounge has French doors leading to the rear garden
- A fitted kitchen with breakfast area and utility room, a separate dining room and a study are also on the ground floor
- Upstairs are three double bedrooms, the master with en suite, a single bedroom and a family bathroom

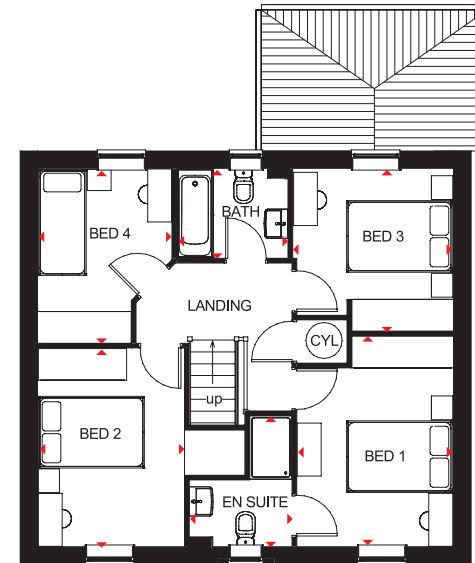


### Ground Floor

Lounge	4767 x 3452mm	15'8" x 11'4"
Kitchen	2995 x 5805mm	9'10" x 19'1"
Dining	2776 x 3537mm	9'1" x 11'7"
Utility	1803 x 1801mm	5'11" x 5'11"
Study	3099 x 2084mm	10'2" x 6'10"
WC	1500 x 1366mm	4'11" x 4'6"

[Approximate dimensions]

\* Window may be omitted on certain plots, Speak to a Sales Adviser for details on individual plots.



### First Floor

Bedroom 1	2961 x 3977mm	9'9" x 13'1"
En Suite	1939 x 2474mm	6'4" x 8'1"
Bedroom 2	2773 x 3751mm	9'1" x 12'4"
Bedroom 3	3022 x 3074mm	9'11" x 10'1"
Bedroom 4	2535 x 3300mm	8'4" x 10'10"
Bathroom	2116 x 1698mm	6'11" x 5'7"

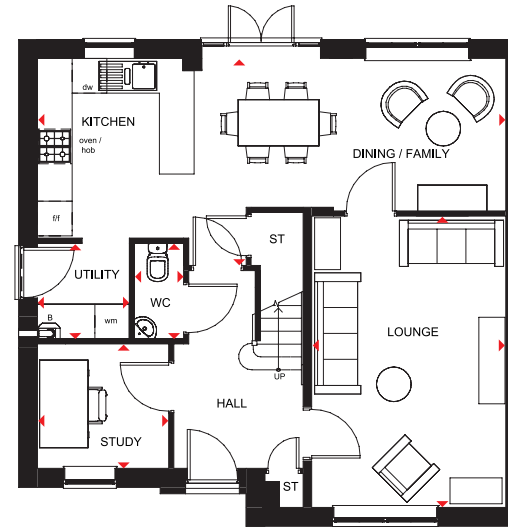
[Approximate dimensions]

<b>KEY</b>	B Boiler	wm Washing machine space	◀▶ Dimension location
	ST Store	f/f Fridge/freezer space	
	CYL Cylinder	dw Dishwasher space	

## 4 BEDROOM DETACHED HOME



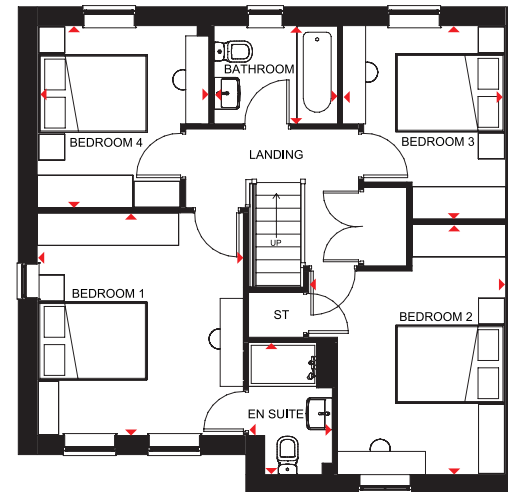
- A bright and airy four bedroom family home
- The large kitchen has dining and family areas with French doors leading to the garden
- There is also a separate utility room, a spacious lounge, separate study and a WC to complete the ground floor
- Upstairs are four double bedrooms, the master with en suite shower room, and a family bathroom



### Ground Floor

Lounge	3361 x 5046mm	11'0" x 16'7"
Kitchen/ Dining/Family	8110 x 3583mm	26'7" x 11'9"
Utility	1592 x 1655mm	5'3" x 5'5"
Study	2273 x 2158mm	7'5" x 7'1"
WC	850 x 1655mm	2'9" x 5'5"

(Approximate dimensions)



### First Floor

Bedroom 1	3570 x 3858mm	11'9" x 12'8"
En Suite	1452 x 2289mm	4'9" x 7'6"
Bedroom 2	3423 x 4335mm	11'3" x 14'3"
Bedroom 3	2824 x 3350mm	9'3" x 11'0"
Bedroom 4	2973 x 3152mm	9'9" x 10'4"
Bathroom	2137 x 1699mm	7'0" x 5'7"

(Approximate dimensions)

KEY			
B	Boiler	f/f	Fridge/freezer space
ST	Store	dw	Dishwasher space
wm	Washing machine space	◀▶	Dimension location

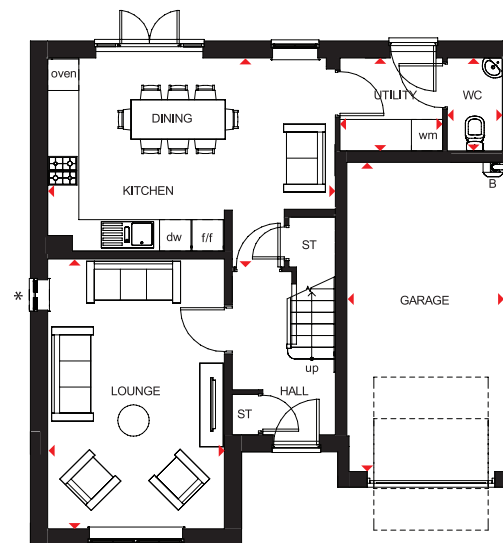




## 4 BEDROOM DETACHED HOME



- Ideal family home designed for modern living with flexible, open-plan kitchen, dining and family areas leading to the rear garden
- Spacious lounge provides the perfect place for all the family to relax in
- Separate utility room and integral garage
- First floor comprises four double bedrooms, the master with en suite, and family bathroom

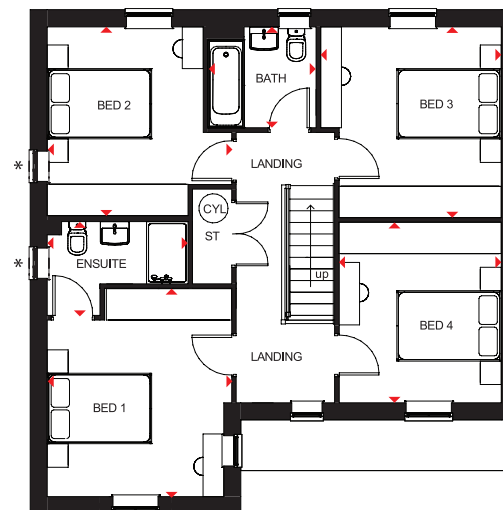


### Ground Floor

Lounge	5165 x 3385mm	16'11" x 11'1"
Kitchen/Dining	4000 x 5511mm	13'1" x 18'1"
Utility	1776 x 1966mm	5'10" x 6'5"
WC	1776 x 1053mm	5'10" x 3'5"
Garage	6000 x 3000mm	19'8" x 9'10"

[Approximate dimensions]

\*Window may be omitted on certain plots. Speak to a Sales Adviser for details on individual plots.



### First Floor

Bedroom 1	3995 x 3536mm	13'1" x 11'7"
En Suite	1801 x 2698mm	5'11" x 8'10"
Bedroom 2	3622 x 3536mm	11'11" x 11'7"
Bedroom 3	3463 x 3660mm	11'4" x 12'0"
Bedroom 4	3463 x 3107mm	11'4" x 10'2"
Bathroom	1939 x 2076mm	6'4" x 6'10"

[Approximate dimensions]

\*Window may be omitted on certain plots. Speak to a Sales Adviser for details on individual plots.

<b>KEY</b>	B Boiler	wm Washing machine space	◀▶ Dimension location
	ST Store	f/f Fridge/freezer space	
	CYL Cylinder	dw Dishwasher space	





# THE CONSUMER CODE

The Consumer Code for Home Builders ("the Code"), which came into effect in April 2010, applies to all Home Builders registered with the UK's main new Home Warranty Bodies; NHBC, Premier Guarantee and LABC Warranty.

The Code gives protection and rights to purchasers of new Homes. It requires all new Home Buyers are treated fairly and are fully informed about their purchase before and after they sign the contract.

The aim of the Code is for all new Home Buyers to:

- be treated fairly,
- know what levels of service to expect,
- to be given reliable information about their purchase and their consumer rights before and after they move in, and
- know how to access speedy, low-cost dispute resolution arrangements to deal with complaints about breaches of the Code

The Code reinforces best practice among Home Builders to encourage a consistently high level of information and customer service. It builds on successful efforts already made by the industry to improve consumer satisfaction in recent years.

The Code covers every stage of the home-buying purchase – pre-contract, exchange of contract and during occupation.

As a 5 star housebuilder we are committed to the Consumer Code for Home Builders. For more information on the Consumer Code for Home Builders please visit <http://www.consumercode.co.uk/>

**CONSUMER  
CODE FOR  
HOME BUILDERS**

[www.consumercode.co.uk](http://www.consumercode.co.uk)





[barratthomes.co.uk](http://barratthomes.co.uk)  
0844 811 35 35

