

RIALTON
AT
NANSLEDAN
NEWQUAY

PLOT 31

886 SQFT

A beautiful 3 bedroom, 2 story semi-detached home. This home enjoys an open plan kitchen / dining room, a separate lounge and WC to the ground floor. To the first floor are three bedrooms and family bathroom. Externally this home enjoys an enclosed garden and off road parking.



PLOT 31

PLOT 32



**MORRISH
HOMES**

PLOT 31

GROUND FLOOR

Living Room

3.9m x 3.9m (12'7" x 12'7")

Kitchen/Breakfast Room

6.1m x 2.6m (20" x 8'5")

FIRST FLOOR

Bedroom 1

3.6m x 3.6m (11'8" x 11'8")

Bedroom 2

3.6m x 2.8m (11'8" x 9'1")

Bedroom 3

2.4m x 2m (7'8" x 6'5")

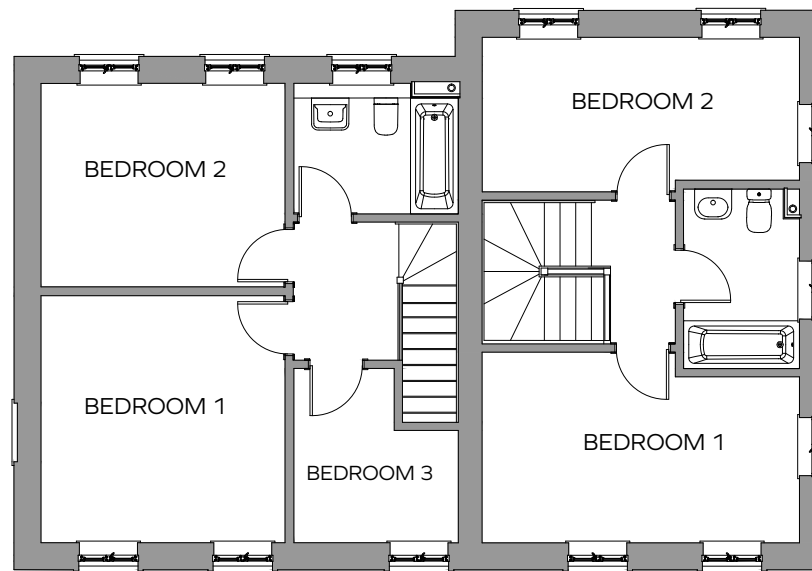


Raising Standards. Protecting Homeowners

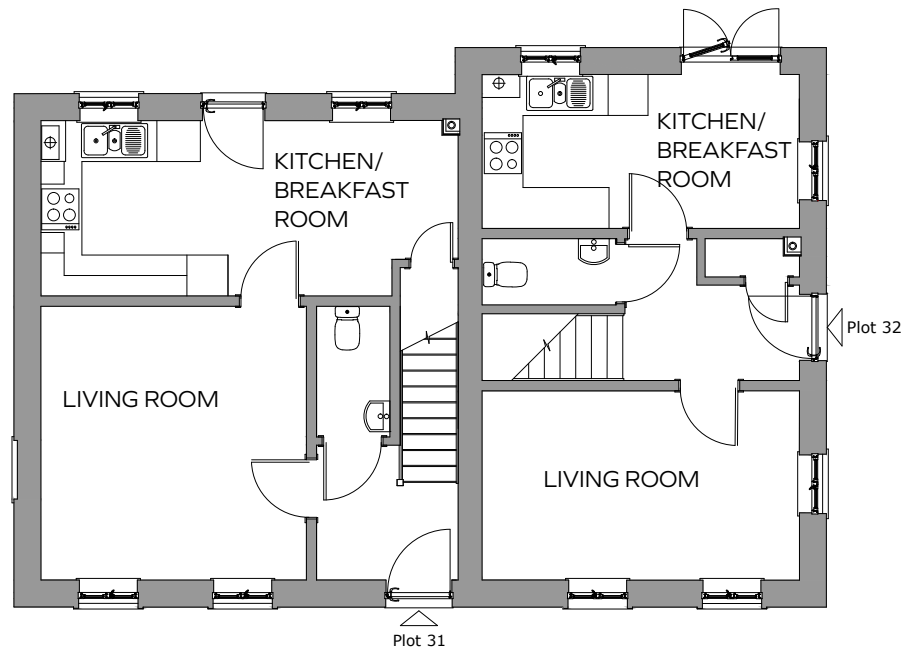
Bradleys
ESTATE AGENTS

01637 838171

<https://www.morrishomes.co.uk/development/rialton-new-build-development-newquay>



FIRST FLOOR PLAN



GROUND FLOOR PLAN

RIALTON
AT
NANSLEDAN
NEWQUAY

**CONSUMER
CODE FOR
HOME BUILDERS**
www.consumercode.co.uk

M1
**MORRISH
HOMES**

Computer generated image is not to scale. Finishes and materials may vary from those shown. Landscaping is illustrative only. Different styles of this house type may have a varied layout or dimensions. Please note floor plans and dimensions are taken from architectural drawings and are for guidance only. Kitchen layouts are for illustrative purposes only, please ask to see separate kitchen layouts.